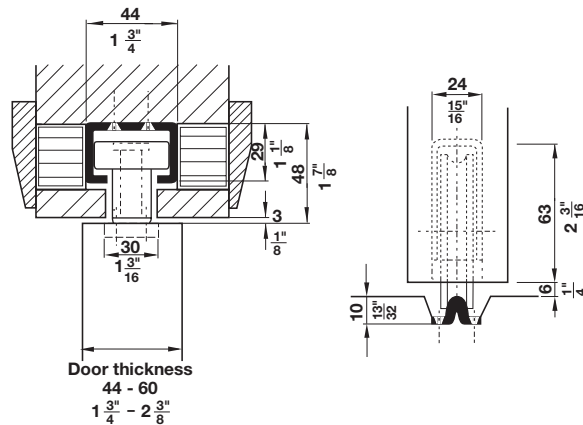


Straightaway 180

- Maximum door weight: 180 kg (400 lbs.)
- Maximum door height: 3000 mm (9' 10 1/8")
- Door thickness range: 44 – 60 mm (1 3/4" – 2 3/8")
- For single and multiple interior and exterior sliding doors
- Upper guide with horizontal wheel
- Simple installation
- Recommended width of door should be a minimum 1/3 of door height
- Mortise for lower running gear must fit tight around the running gear's casing
- Weight of sliding door must be carried on top of casing above the wheel
- Stagger upper guides to reduce left right movement inside upper guide channel
- Lower running gear must be plumb with upper guide



Individual Components

Order specifications:

- Number of running gears (2 per door) and upper guides
- Lower track and upper guide channel lengths
- Door weight, height and width
- Type of stopper

	Description	Material	Finish	Length	Item No.
	Lower track, pre-drilled 10 x 21 mm (3/8 x 13/16 inch)	Stainless Steel	-	3 m (9' 10 1/8")	941.80.631
				2.1 m (6' 10 11/16")	941.80.622
	Upper guide channel, pre-drilled 44 x 29 mm (1 3/4 x 1 1/8 inch)	Steel	galvanized	3 m (9' 10 1/8")	941.80.830
				2.1 m (6' 10 11/16")	941.80.821
	Lower running gear, wheel with ball bearing	Casing: Die-cast Wheel: Steel	-	-	941.80.010
	Upper guide with horizontal wheel	Casing: Die-cast Wheel: Nylon	-	-	941.80.030
	Spring loaded door stop, drilled into door	Steel	galvanized	-	942.30.051
	Buffer	Rubber	black	-	941.80.050

Dimensional data not binding. We reserve the right to alter specifications without notice.