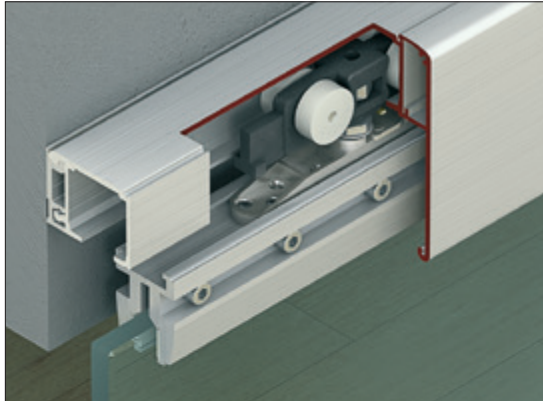
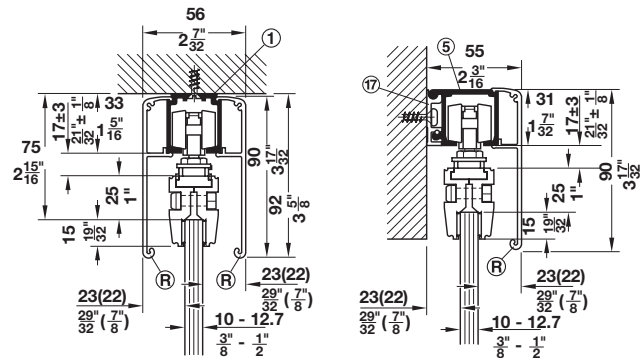


Slido Classic 80-L to 120-L

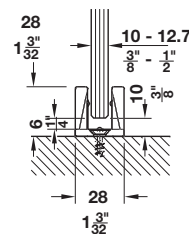
- Door weight: 80 – 120 kg (176 – 264 lbs.) per door
- For 1 and 2 sliding glass doors
- Door height adjustable ± 3 mm (1/4")
- With integrated support flange
- Door thickness: 10 and 12 mm (3/8" and 1/2")



Ceiling installation and wall mounting



Floor guide



Slido Classic L Set

- For 1 sliding door without upper track

Soft Close	Version	Door width/weight	80-L 80 kg (176 lbs.)	120-L 120 kg (264 lbs.)
Without	A	–	940.82.200	941.25.150
On one side	B	≥628 mm (24 3/4") 80 kg (176 lbs.) ≥717 mm (28 1/4") 120 kg (264 lbs.)	940.82.567	941.25.151
On both sides	C	≥769 – 888 mm (30 1/4" – 34 15/16") (recommended max. width)	940.82.202	–
	D	≥889 – 1008 mm (35" – 39 11/16") (recommended max. width)	940.82.568	–
	E	≥958 (37 11/16") 80 kg (176 lbs.) ≥1136 (44 3/4") 120 kg (264 lbs.)	940.82.569	941.25.152

Supplied With

Running gear, suspension screw with nut, suspension plate, floor guide and soft close with versions B, C, D, E.

Note

Please order glass clamp shoe, tracks, fascias and accessories separately.

For 2 bi-parting sliding doors, please order 2 sets.

End cap for ceiling installation with fascia on both sides is not available.

One pair of end caps can be glued vertically in the center of the running track, optional.

Pull handles	pages 2.10-2.32
Glass clamp shoes	page 1.205
Flush pulls	pages 1.363, 1.371-1.373
Synchro fitting	page 1.209
Sliding door locks	pages 1.357, 1.364-1.368
Tracks, fascias and accessories	pages 1.206-1.207
Track cleaner	page 1.237