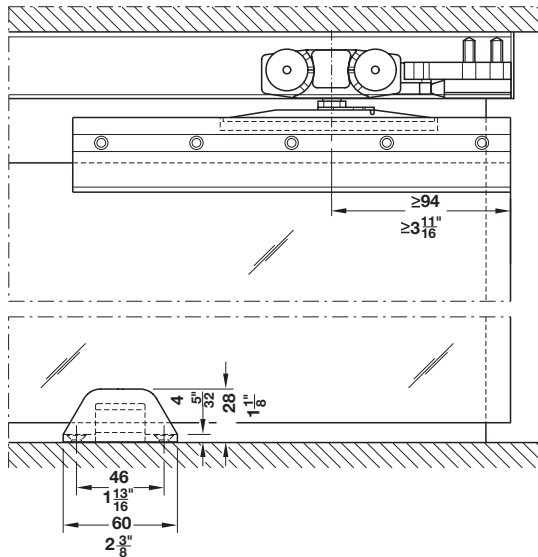
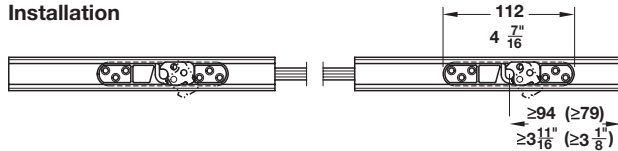


Slido Classic 80-L to 120-L



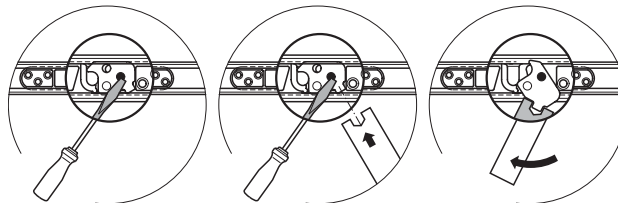
Section guide and trolley hanger

Installation



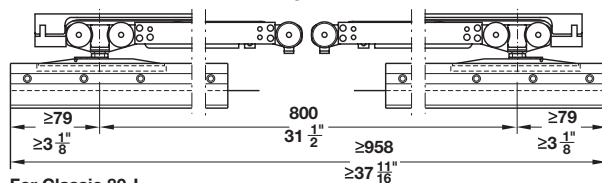
Left flange clip

Right flange clip



Removing the flange clip

Version E, with soft and self closing mechanism on both sides



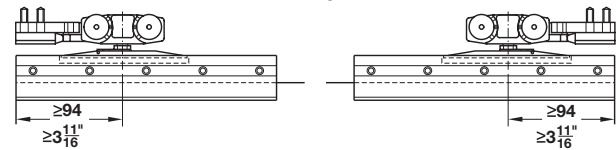
For Classic 80-L

Glass Clamp Shoe Sets

	Description	Qty. of clamps, 1 door	Length	Item No.
	Glass clamp shoe set for glass thickness 10 mm (3/8")	2	200 mm (7' 7/8")	940.43.041
		1	1000 mm (3' 3 3/8")	940.43.043
	Glass clamp shoe set for glass thickness 12.7 mm (1/2")	1	1500 mm (4' 11")	940.43.045
		2	200 mm (7' 7/8")	940.43.067
		1	1000 mm (3' 3 3/8")	940.43.068
		1	1500 mm (4' 11")	940.43.069

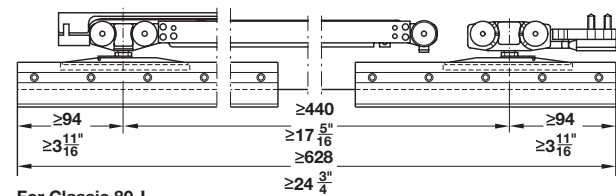
Versions overview

Version A, without soft and self closing mechanism

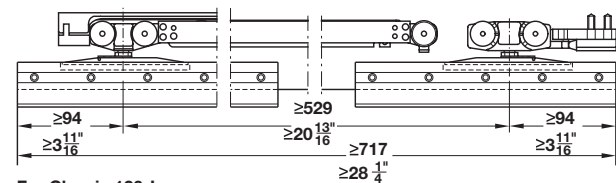


For Classic 80-L to 120-L

Version B, with soft and self closing mechanism on one side

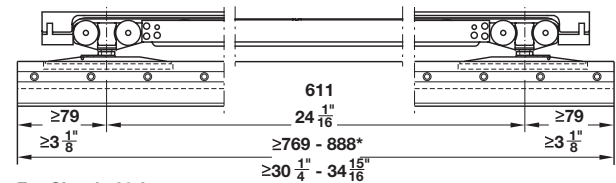


For Classic 80-L



For Classic 120-L

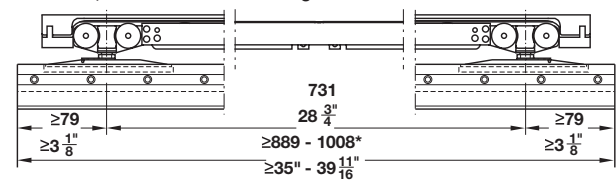
Version C, with soft and self closing mechanism on both sides



For Classic 80-L

* recommended max. width

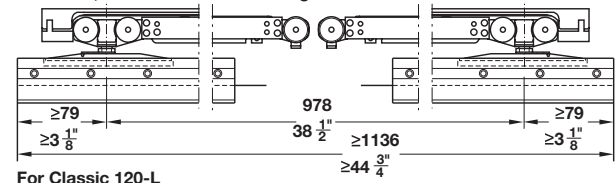
Version D, with soft and self closing mechanism on both sides



For Classic 80-L

* recommended max. width

Version E, with soft and self closing mechanism on both sides



For Classic 120-L