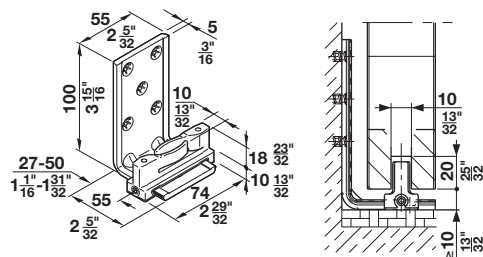
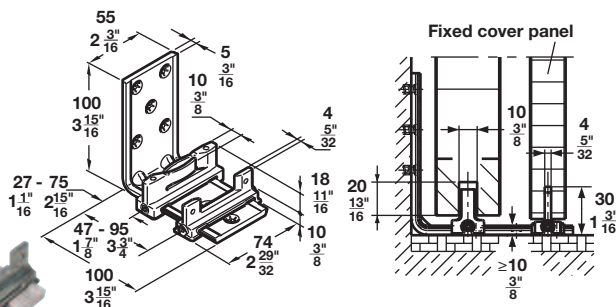
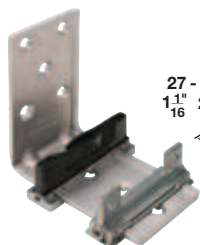


A technical drawing of a door assembly. It shows a cross-section of a door frame with a door panel being inserted. The door panel has a handle and a lock mechanism. The frame has a hinge and a latch. The drawing is a line drawing with dimensions and labels.



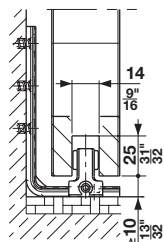
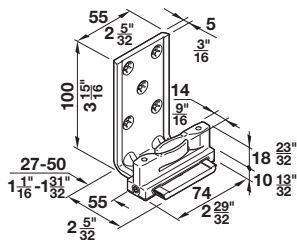
- Laterally adjustable
- Wall mounted
- Rattle-free
- Suitable for doors weighing up to: 120 kg (264 lbs.)
- Groove size: 10 mm (13/32")

Item No.
940.40.071



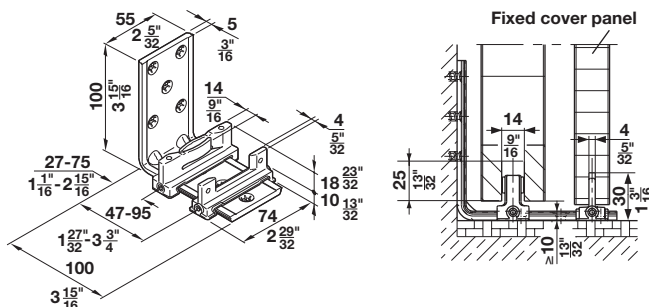
- Laterally adjustable
- Wall mounted
- Rattle-free
- With holding element for fixed cover panel
- Suitable for doors weighing up to: 120 kg (264 lbs.)
- Groove size: 10 mm (13/32")

Item No.
940.40.072



- Laterally adjustable
- Wall mounted
- Rattle-free
- Suitable for doors weighing up to: 250 kg (550 lbs.)
- Groove size: 14 mm (9/16")

Item No.
941.60.071



- Laterally adjustable
- Wall mounted
- Rattle-free
- With holding element for fixed cover panel
- Suitable for doors weighing up to: 250 kg (550 lbs.)
- Groove size: 14 mm (9/16")

Item No.
941.60.072

AH 1.198

www.hafele.com/us

Dimensional data not binding. We reserve the right to alter specifications without notice.