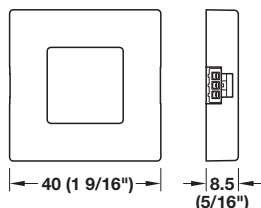
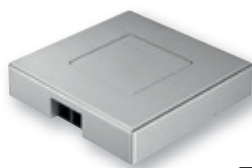


Sensor switches



Häfele Loox sensor switch, surface mounted modular - touch-free on/off switching

TOUCH-FREE



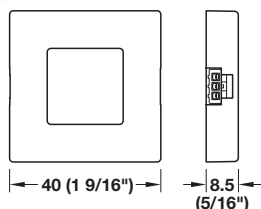
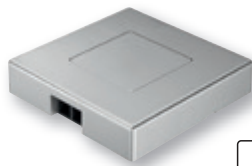
- > Material/Color: Plastic, silver colored
- > L x W x H: 40 x 40 x 8.5 mm (1 9/16" x 1 9/16" x 5/16")
- > Degree of protection: IP20
- > Sensor range: 0–80 mm (0–3 1/8")
- > Power consumption: ≤0.3 W
- > Supplied with: 1 switch with fixing material

Item No.
833.89.136

+ Please order lead with snap-in connector for modular switches driver separately. Length 2000 mm (78 3/4"): Item No. 833.89.142, see page 89.

! On/off state is stored without the need for power supply (memory function).

Häfele Loox door sensor switch, surface mounted modular - soft on/off switching



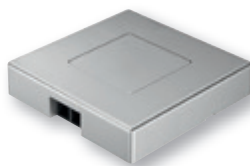
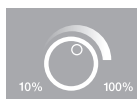
- > Material: Plastic
- > L x W x H: 40 x 40 x 8.5 mm (1 9/16" x 1 9/16" x 5/16")
- > Degree of protection: IP20
- > Sensor range: 0–100 mm (0–4")
- > Power consumption: ≤0.3 W
- > Supplied with: 1 switch with fixing material

Silver colored	Black	White
833.89.137	833.89.182	833.89.183

+ Please order lead with snap-in connector for modular switches driver separately. Length 2000 mm (78 3/4"): Item No. 833.89.142, see page 89.

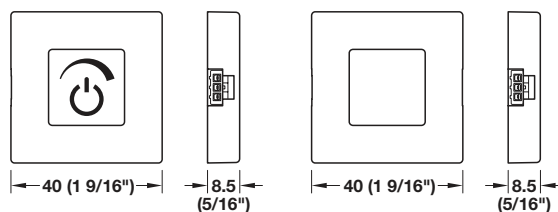
Häfele Loox dimmer, surface mounted modular - soft on/off switching and dimming

TOUCH/ TOUCH-FREE



Touch

Touch-free



- > Material: Plastic
- > L x W x H: 40 x 40 x 8.5 mm (1 9/16" x 1 9/16" x 5/16")
- > Degree of protection: IP20
- > Sensor range: 0–100 mm (0–4")
- > Power consumption: ≤0.3 W
- > Supplied with: 1 switch with fixing material

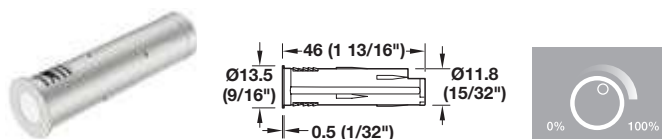
	Sensor range	Color	Item No.
Touch	–	silver colored	833.89.134
Touch-free	0–80 (0–3 1/8")	silver colored	833.89.135
Touch	–	black	833.89.176
Touch	–	white	833.89.177

+ Please order lead with snap-in connector for modular switches driver separately. Length 2000 mm (78 3/4") : Item No. 833.89.142, see page 89.

! Dimming value is stored without the need for voltage supply (memory function)

TAG Illuminated Glass Shelf Accessories

→ Dimmer Switches



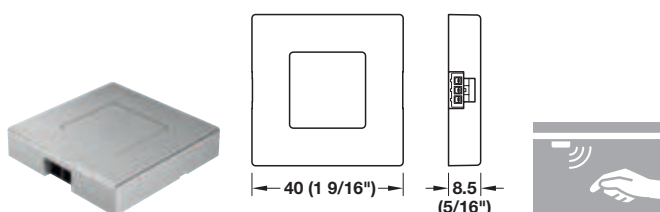
- > Soft on/off switching
- > Power consumption: ≤ 0.3 W
- > Power rating: 90 W
- > Degree of protection: IP20
- > Drill hole \varnothing : 13 mm (1/2")
- > Material: Plastic, Color: silver-colored

Switching	Sensor Range	Item No.
Touch	–	833.89.058
Touch-free	0–60 (0"–2 3/8")	833.89.126

Note

Dimming value is stored without the need for power supply (memory function). Order lead for modular switch to Loox driver separately.

→ Sensor Switch, Touchless



- > Soft on/off switching
- > For mounting under cabinet or shelf
- > Power consumption: ≤ 0.3 W
- > Power rating: 90 W
- > Degree of protection: IP20
- > L x W x H: 40 x 40 x 8 mm (1 9/16" x 1 9/16" x 5/16")
- > Material: Plastic, Color: silver-colored

Sensor range	Item No.
0–80 mm (0"–2 1/8")	833.89.136

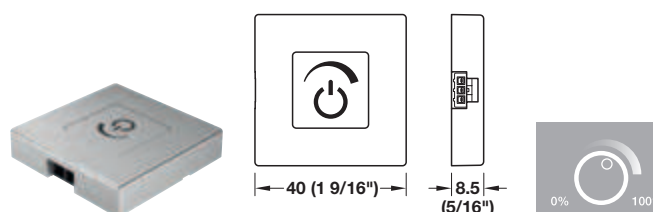
Supplied With

Mounting material

Note

On/off state is stored without the need for power supply (memory function). Lead with snap-in connector for modular switches, please order separately.

→ Dimmer Switch, Touch



- > Soft on/off switching
- > For mounting under cabinet or shelf
- > L x W x H: 40 x 40 x 8 mm (1 9/16" x 1 9/16" x 5/16")
- > Power consumption: ≤ 0.3 W
- > Power rating: 90 W
- > Material: Plastic, Color: silver-colored

Sensor range	Item No.
0–80 mm (0"–2 1/8")	833.89.134

Supplied With

Mounting material

Note

On/off state is stored without the need for power supply (memory function). Lead with snap-in connector for modular switches, please order separately.

→ Lead for Modular Switches



- > Degree of protection: IP20
- > Material: Plastic, Color: black

Length	Item No.
500 (19 1/16")	833.89.140
1000 (39 3/8")	833.89.141
2000 (78 3/4")	833.89.142

Dimensional data not binding. Dimensions in mm, inches are approximate. We reserve the right to alter specifications without notice.

Home and Closet Organization