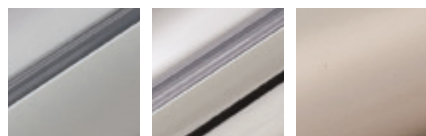
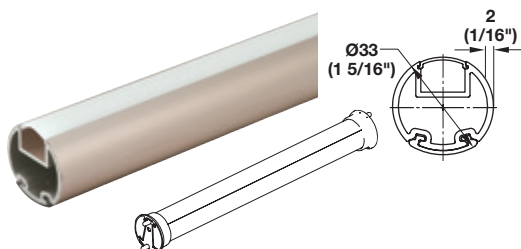


# Elite wardrobe tube profiles

Aluminum

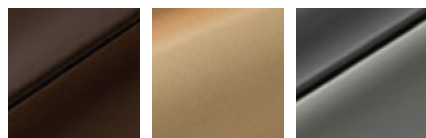
## Wardrobe tube



matt  
aluminum

polished  
chrome

matt  
nickel



oil-rubbed  
bronze

matt  
gold

slate

- > Material/Finish: Aluminum, anodized
- > Insert: Plastic
- > Supplied with: 1 pc. with milk lens

Length	Finish/insert	Item No.
2438 mm (8')	Matt aluminum/clear	830.28.700
2438 mm (8')	Matt nickel/clear	830.28.710
2438 mm (8')	Polished chrome/clear	830.28.720
2438 mm (8')	Oil-rubbed bronze/black	830.28.730
2438 mm (8')	Matt gold/clear	830.28.790
2438 mm (8')	Slate/black	830.28.800
1219 mm (4')	Matt aluminum/clear	830.28.701
1219 mm (4')	Matt nickel/clear	830.28.711
1219 mm (4')	Polished chrome/clear	830.28.721
1219 mm (4')	Oil-rubbed bronze/black	830.28.731
1219 mm (4')	Matt gold/clear	830.28.705
1219 mm (4')	Slate/black	830.28.706

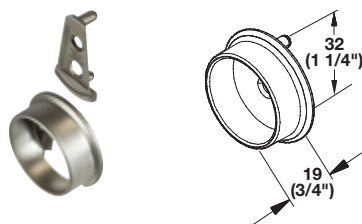


### Lens

- > Material: Plastic
- > Cover: Milk
- > Height: 13 mm (1/2")

**Item No.**  
**833.74.781**

## Wardrobe tube support



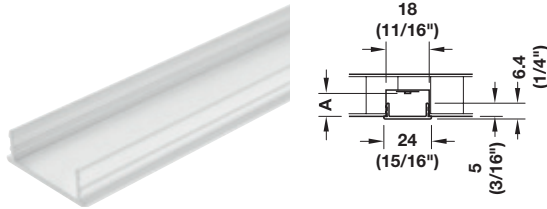
- > Unique two-part design allows the support to fully surround the tube ends
- > Connect the wedge shaped brackets into line bore holes and side supports onto the end of the tube
- > Side supports connect to the wedge shaped brackets
- > With two pins for 5 mm (3/16") holes
- > 32 mm (1 1/4") spacing with an additional screw hole for side panel mounting

- > Material: Zinc-plated
- > Diameter: 32 mm (1 1/4")

Finish	Item No.
Matt aluminum	803.39.410
Matt nickel	803.39.610
Polished chrome	803.39.210
Oil-rubbed bronze	803.39.110
Matt gold	803.39.910
Slate	803.39.710

# Covers, lenses and cooling strip

## For Häfele Loox LED Strip Lights



### Lens cover

- > Material: Plastic
- > Cover: Milk
- > Length: 2500 mm (98 3/8")
- > Application: For recess mounting

### Item No.

833.00.733



### Note

Only for LED strips with max 9.6 W per m (3.0 W per ft).

### Replacement lenses

- > Material: Plastic
- > Length: 2500 mm (98 7/16")

### Cover

Frosted

### Item No.

833.74.780

Milk

833.74.781



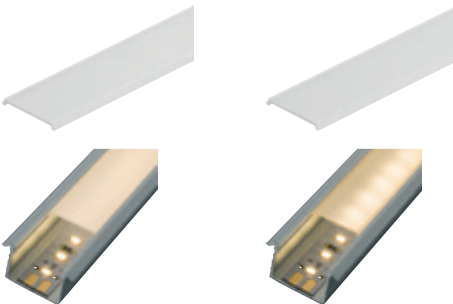
&gt; Simple replacement of existing diffusers in order to switch from frosted to milk

### Note

Cannot be used for the following aluminum profiles:  
833.74.809, 833.74.835

Size A min., so that LED points are not visible

Diffuser	LED	
	2068	3045
Milk	13 mm (1/2")	



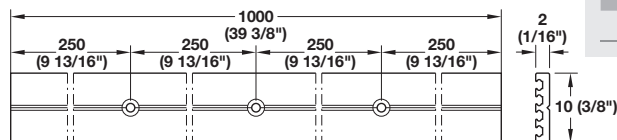
## Häfele Loox cooling strip



- > Material: Aluminum
- > L x W: 1000 x 10 mm (39 3/8" x 3/8")
- > Height: 2 mm (1/16")
- > Mounting: For screw fixing, drill holes at 250 mm (9 13/16"), 500 mm (19 11/16"), and 750 mm (29 1/2")
- > Supplied with: 1 profile

### Item No.

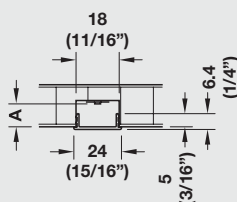
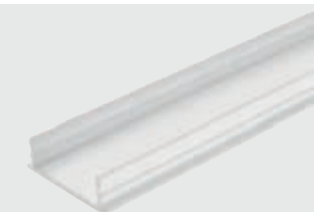
833.77.700



# COVERS AND LENSES

FOR LED 2029 / 2037/ 2041/ 2042/ 3015/ 3028

## Lens Cover



- > Only suitable for 12 V LED strip lights
- > For recess mounting

### Note

LED 3015 / 3028 must be installed in an aluminum profile for proper heat dissipation.  
Light strips with 7.5 W per meter (2.28 W per foot) or greater ideally need proper heat dissipation.

Item No.	833.00.733
SRP	\$5.00
Material	Plastic
Cover	milk
Length	2500 (98 3/8")
Application	For recess mounting

	Size A min., so that LED points are not visible	
Diffuser	LED	
	2029	2037
milk	13 (1/2")	

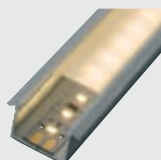
## Replacement Lenses



Milk



Frosted



Item No.	833.74.780	833.74.781
SRP	\$7.50	\$7.50
Material	Plastic	
Cover	frosted	milk
Length	2500 (98 3/8")	



- > Simple replacement of existing diffusers in order to switch from frosted to milk

### Note

Cannot be used for the following aluminum profiles:  
833.74.809, 833.74.835

## Flat Lens



- > Lens used in conjunction with a surface profile
- > Assembly intended to be recessed into a dado
- > Flat lens allows the profile assembly to sit flush with cabinet side wall

Item No.	833.74.783
SRP	\$10.00
Material	Polycarbonate
Cover	milk
W x H x L	18.5 x 3.5 x 2500 (3/4" x 1/8" x 98 3/8")

## Semi-round Lens



Item No.	833.74.807
SRP	\$4.00
Material	Plastic
Cover	milk
Length	2500 (98 3/8")



### Note

For use with corner profiles.