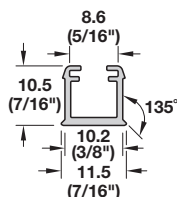
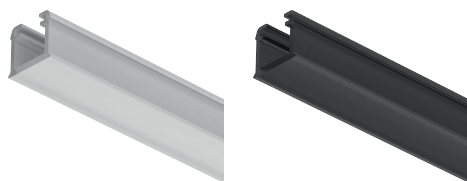


# PROFILES 1101/1102

## PLASTIC

### Recess mounted profile 1101, for 8 mm (5/16") LED strips



Routing dimensions W x D: 11 x 11 mm (7/16" x 7/16")

**Routing dimensions are for reference only.**  
**Furniture construction may affect dimensions.**

- > Diffuser creates a uniform light
- > Easy installation: LED strip simply slides into channel

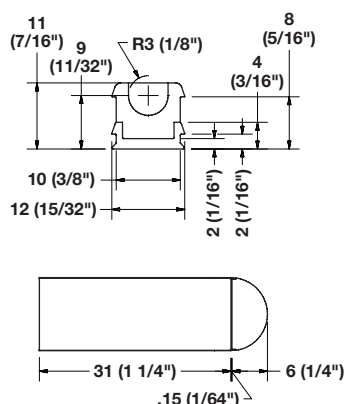
- > For use with 8 mm (5/16") LED strip lights with max. 9.6 W/m (3 W/ft.)
- > Length: 2.337 m (92")
- > Material: Plastic
- > Supplied with: 1 profile

Color	Transmittance	Item No.
white	60–70%	833.95.898
black	~20%	833.95.990

12  
V

24  
V

### End caps for profile 1101

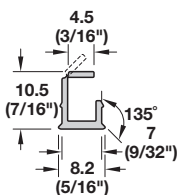
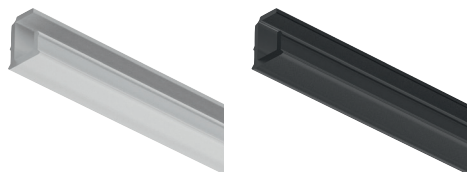


- > Material/Color: Plastic, gray
- > Supplied with: 1 pc.

Item No.
833.03.029



### Recess mounted profile 1102, for 5 mm (3/16") LED strips



Routing dimensions W x D: 8 x 11 mm (5/16" x 7/16")

**Routing dimensions are for reference only.**  
**Furniture construction may affect dimensions.**

- > Diffuser creates a uniform light
- > Easy installation: LED strip simply slides into channel

- > For use with 5 mm (3/16") LED strip lights with max. 9.6 W/m (3 W/ft.)
- > Length: 2.5 m (98 7/16")
- > Material: Plastic
- > Supplied with: 1 profile

Color	Transmittance	Item No.
white	60–70%	833.95.802
black	~20%	833.95.803