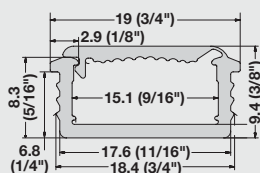


MOUNTING STRIPS

FOR LED 2037/ 2042

Profile, recess mounted



> The profile depicted is only suitable for 12 V LED light strips, with max. 7.5 W per meter (2.28 W per foot)

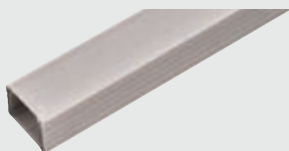


End cap, Plastic, silver colored, 2 pcs.

> Item No. 833.72.768

SRP \$8.00

Co-extruded Profile, surface mounted



> The profile depicted is only suitable for 12 V LED light strips, with max. 7.5 W per meter (2.28 W per foot)



End cap, Plastic, silver colored, 2 pcs.

> Item No. 833.72.853

SRP \$4.00



Mounting Tape

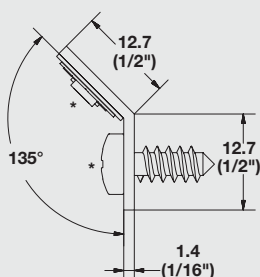
W x L: 12 x 78 (1/2" x 3 1/16")

Foam, white

> Item No. 003.58.270

SRP \$0.91

Profile for Loox Strip 135°



Item No.

833.00.800

SRP

\$5.00

Material

Plastic

Color

white

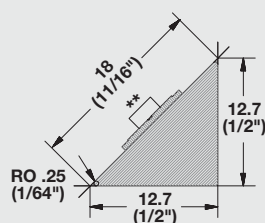
Length

2.5 m (98 3/8")

Note

Loox LED strip and screw shown for application and position only.

Corner Profile



Item No.

833.02.840

SRP

\$10.50

Material/Finish

Solid Poplar Wood, natural

Length

2.5 m (98 3/8")

Application

For surface mounting

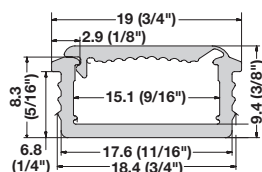
Note

Loox LED strip shown for application and position only.

Mounting strips

For LED Strip Lights

Profile - recess mounted



- > Material/Color: Polypropylene, clear anodized
- > Cover: Aluminum color, frosted
- > L x W x H: 2500 x 20 x 10 mm
(98 7/16" x 13/16" x 3/8")

	Item No.
	833.00.710



- > The profile depicted is only suitable for 12 V LED light strips, with max. 9.6 W per meter (3.0 W per foot)



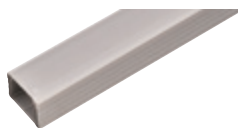
End cap

- > Material/Color: Plastic, silver colored
- > Supplied with: 2 pcs.



	Item No.
	833.72.768

Co-extruded profile - recess mounted



- > Material/Color: Polypropylene
- > Cover: Aluminum color, milk
- > L x W x H: 2500 x 19 x 15 mm
(98 7/16" x 3/4" x 9/16")

	Item No.
	833.01.700



- > The profile depicted is only suitable for 12 V LED light strips, with max. 9.6 W per meter (3.0 W per foot)



End cap

- > Material/Color: Plastic, silver colored
- > Supplied with: 2 pcs.



	Item No.
	833.72.853



Mounting tape

- > Material/Color: Foam, white
- > W x L: 12 x 78 mm
(1/2" x 3 1/16")

	Item No.
	003.58.270