

**Tavoflex**

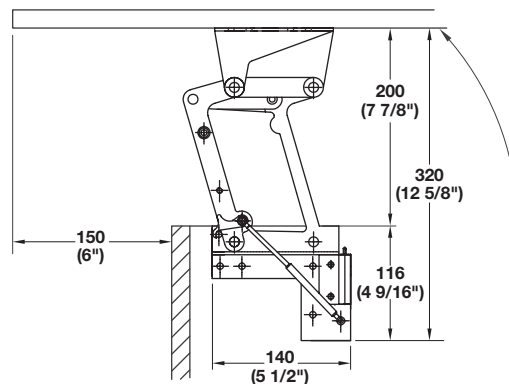


- > The table top is lifted easily using gas-filled struts
- > Integrated soft closing mechanism
- > With safety catch to prevent unintentional closing
- > Weight capacity: 5 kg (11 lbs.)

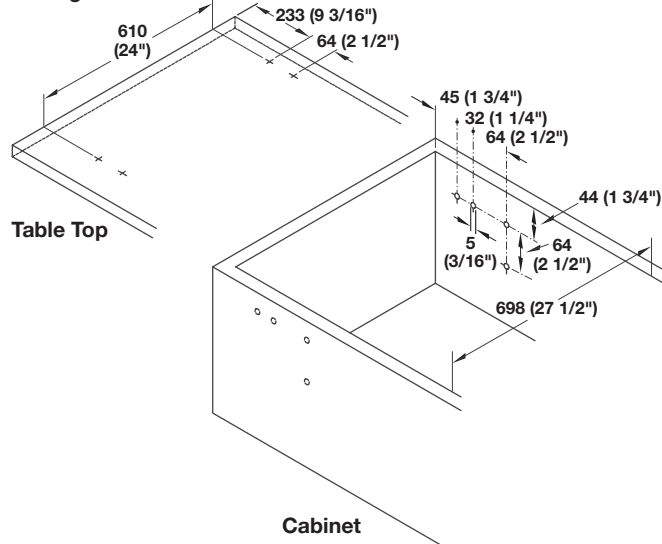


*soft&silent*)))

→ **Top Lift-Up Fitting**



**Drilling Pattern**



- > For raising and forward pivoting of table tops and worktops
- > Side covers prevent fingers from being trapped
- > Cross bar cannot be shortened
- > For screw mounting into pre-drilled 32 mm (1 1/4'') series drilled holes
- > Recommended panel thickness: 16 mm (5/8'')
- > Installation width: 698 mm (27 1/2'')
- > Material: Steel

**Finish**

silver aluminum, RAL 9006

**Item No.**

643.12.201

**Supplied With**

2 Lift up table top fittings  
 Cross bar  
 Installation instructions

**Note**

Minimum gap between a fixed table top 6 mm (1/4'').

Dimensional data not binding. Dimensions in mm, inches are approximate. We reserve the right to alter specifications without notice.