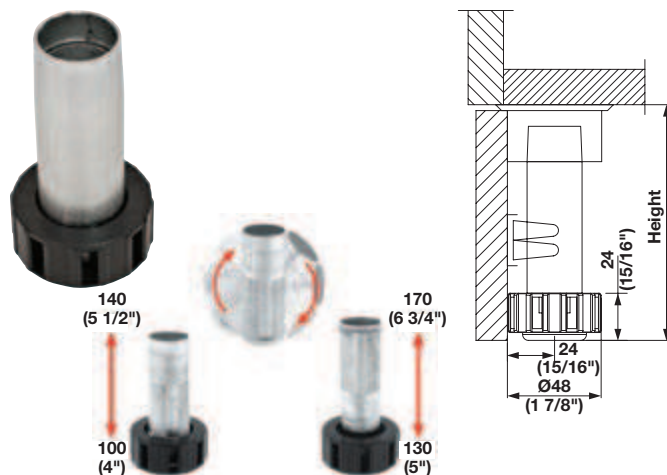


Levelers

→ XT Adjustment Foot



- > With reversible inner threaded tube to create 2 height ranges: 100–140 mm (4"–5 1/2") 130–170 mm (5"–6 3/4")
- > Choose between plastic or metal mounting sockets below
- > Shaft Ø: 28 mm
- > Weight capacity: 150 kg (330 lbs.) per foot
- > Material: Shaft: Steel; Foot: Plastic; Color: black

Item No.

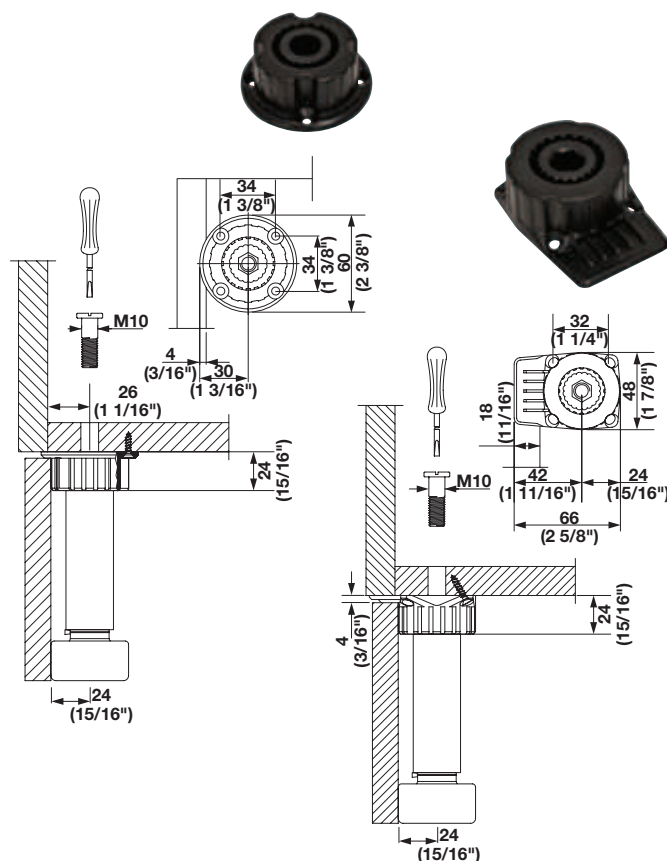
637.59.932

Note

Height ranges include mounting socket.
See next page for plinth clips and M10 attachment screw.

→ XT Metal Mounting Sockets

→ XT Plastic Mounting Sockets



- > Both versions can be screw mounted or through mounted with M10 attachment screw
- > Material: Plastic; Color: black

Version

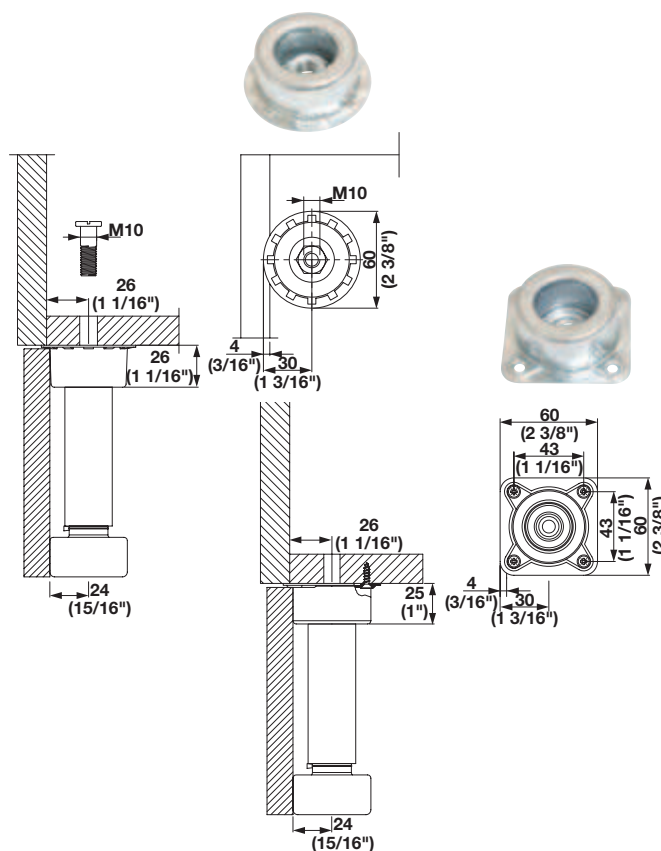
Round

Item No.

637.59.980

With additional support tab

637.59.992



- > Square is screw mounted
- > Round is through mounted with M10 attachment screw
- > Material: Steel

Version

Round

Item No.

637.19.020

With additional support tab

637.19.060