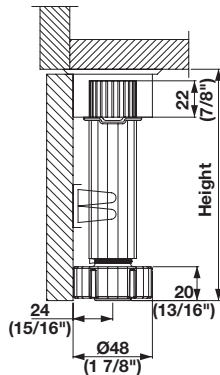


Levelers

→ Adjustment Feet

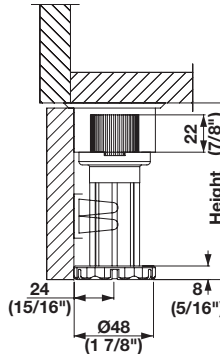


- > Slots in base allow for easy adjustment with flat blade driver
- > Shaft Ø: 28 mm (1 1/8")
- > Adjustment range: -5/+20
- > Weight capacity: 114 kg (250 lbs.) per foot
- > Material: Plastic; Color: black

Base height	Item No.
80 (3 1/8")	637.19.380
100 (4")	637.19.360

Note
Height listed is total, including mounting socket.
See page 6.32 for plinth clips and M10 attachment screw.

→ Adjustment Feet

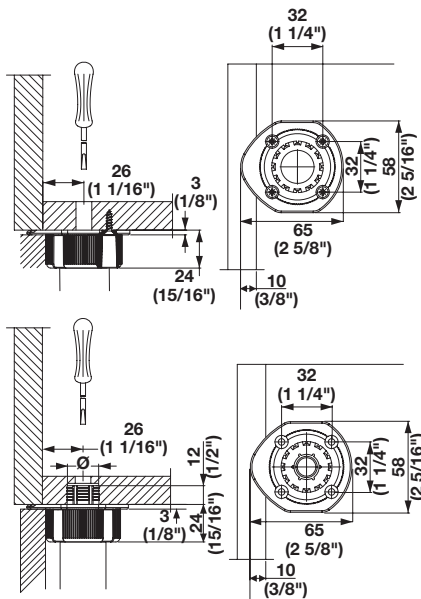
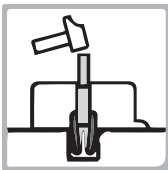


- > For short applications

Base height	Item No.
50 (2")	637.86.331
70 (2 3/4")	637.86.335

Note
50 mm (2") version will not accept plinth clips.

→ Mounting Sockets



- > Screw or through mounted with M10 screw or pound in with dowel
- > Material: Plastic; Color: black

Mounting	Item No.
Screw mounted	637.19.964
Pound in dowel - Ø10 mm	637.19.952
Pound in dowel - Ø15 mm	637.19.954