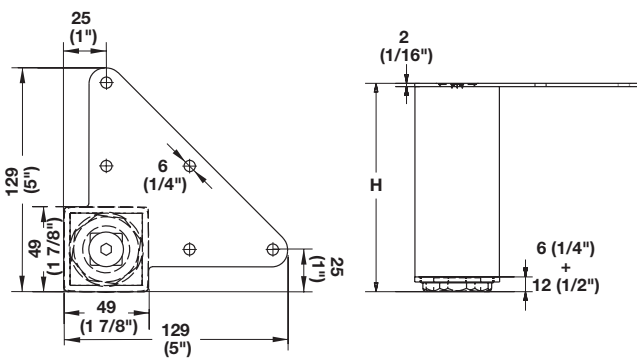


Furniture Feet

→ Square Furniture Feet



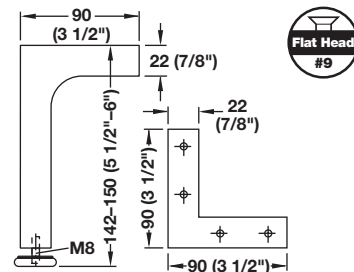
- > With adjustable glide
- > Available in typical plinth height of 101 mm (4'') and typical vanity height of 254 mm (10'')
- > With clear lacquer coating
- > Mounting plate allows feet to be mounted flush with corner of cabinet
- > With 12 mm (1/2'') of adjustment
- > Feet cannot be cut down
- > Weight capacity: 50 kg (100 lbs.) per foot
- > Material: Steel; Glide: Plastic

Height	polished chrome	brushed steel
101 (4'')	634.13.210	634.13.012
254 (10'')	634.13.220	634.13.021

Supplied With

4 Feet and mounting plates (screws not provided)

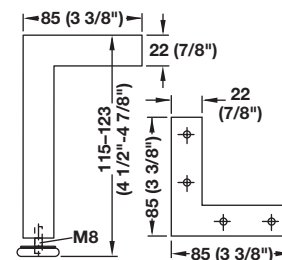
→ Height Adjustable Furniture Feet



> Material: Aluminum, die-cast, matt; Glide: Plastic; Color: white

Item No.

634.44.412



> Material: Aluminum, die-cast, polished; Glide: Plastic; Color: white

Item No.

634.44.201