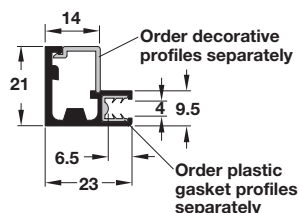


Cut-To-Size Doors

- > Easy fabrication, only a 45° miter cut is needed
- > Ability to make individually sized frames
- > Aluminum saw blade recommended for miter cut
- > No drilling required; hinges slide into aluminum profile
- > For glass thickness: 4 mm (5/32")
- > Length: 2.5 m (8' 2 7/16")
- > Material: Aluminum

→ Profile



Finish

silver colored anodized  
stainless steel look

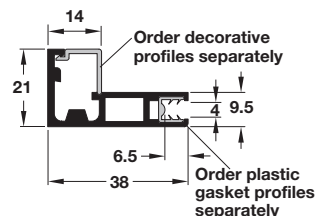
Item No.

563.25.902  
563.25.002

Note

Glass size = 34 mm (1 5/16") less height and width of aluminum frame.

→ Profile



Finish

silver colored anodized  
stainless steel look

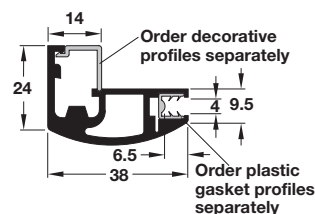
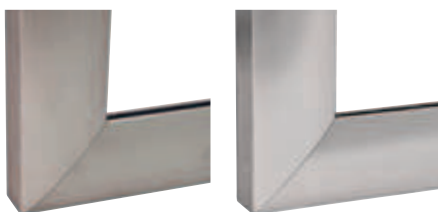
Item No.

563.26.902  
563.26.002

Note

Glass size = 65 mm (2 1/2") less height and width of aluminum frame.

→ Profile



Finish

silver colored anodized  
stainless steel look

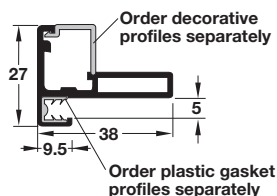
Item No.

563.27.902  
563.27.002

Note

Glass size = 65 mm (2 1/2") less height and width of aluminum frame.

→ Profile



Finish

silver colored anodized  
stainless steel look

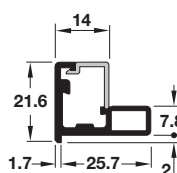
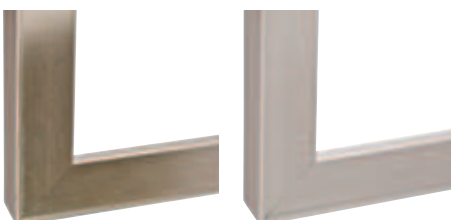
Item No.

563.26.912  
563.26.112

Note

Glass size = 6 mm (1/4") less height and width of aluminum frame. Decorative profiles and plastic gasket on next page. Profile can not be used for inset application.

→ Profile



Finish

silver colored anodized  
stainless steel look

Item No.

563.26.922  
563.26.022

Note

Glass size = 4 mm (5/32") less height and width of aluminum frame.