

LAVIDO Pantry Pull-Out



- > This extremely flexible pantry storage solution provides high visibility and easy-to-reach access from three sides
- > Synchronized, full extension pantry runner
- > Infinite height adjustment feature on shelves; simply lift a lever to unlock the shelf for repositioning
- > For use with a hinged door—165° hinge opening recommended, 90° opening minimum
- > For 450–600 mm (18"–24") nominal cabinet widths
- > Minimum inside cabinet depth: 500 mm (19 11/16")
- > Weight capacity: 20 kg (44 lbs.) per shelf / 130 kg (286 lbs.) total
- > Pull-out travel: 470 mm (18 1/2")

**Note**

There are 3 components you need to order for the LavidO Pantry:

- A** Pantry Frame
- B** Trays
- C** Full Extension Runner

*soft&silent*)))

→ A - Pantry Frame



- > Material: Steel; Finish: silver

Top shelf storage height	Item No.
813 (32")	549.60.901
1016 (40")	549.60.903
1219 (48")	549.60.906
1524 (60")	549.60.909
1727 (68")	549.60.911

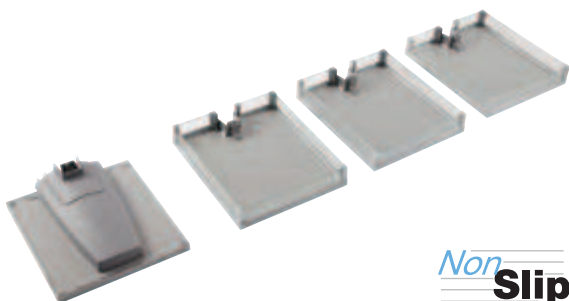
→ C - Full Extension Runner



- > Material: Steel/Plastic

Finish	Item No.
silver	549.60.990

→ B - 4 Tray Set



- > Material: Melamine; Surround: Steel

Actual tray width	Nominal cabinet size	maple/chrome	gray/chrome	white/chrome	anthracite/chrome
400 (15 3/4")	450 (18")	549.64.214	549.64.224	549.64.204	549.60.254
449 (17 11/16")	500 (21")	549.64.215	549.64.225	549.64.205	549.60.255
549 (21 5/8")	600 (24")	549.64.216	549.64.226	549.64.206	549.60.256

**Supplied With**

Tray with integrated top runner, 3 Trays, 4 Accessory boxes, Support bracket, Fixing brace, Handle for mounting to the bottom of tray

**Note**

Optional to add individual trays – recommended to use 5 trays for pantries from 1448 – 1956 mm (57" – 77") and 6 trays over 1956 mm (77"). Required to order 1 tray set, additional individual trays can be ordered separately, see next page.

*Non Slip*

Dimensional data not binding. Dimensions in mm, inches are approximate. We reserve the right to alter specifications without notice.