

Magic Corner II Finition™ Boxes



- > A beautiful combination of the warmth of wood with European functional hardware
- > Combine with other Finition interior cabinet accessories for a consistent design throughout your entire kitchen

Note

Design Patent #D894.653

→ Traverse Set



- > Required when using Finition boxes for Magic Corner II
- > Material: Steel

Finish	Item No.
silver	548.10.290
champagne	548.10.890

→ Box

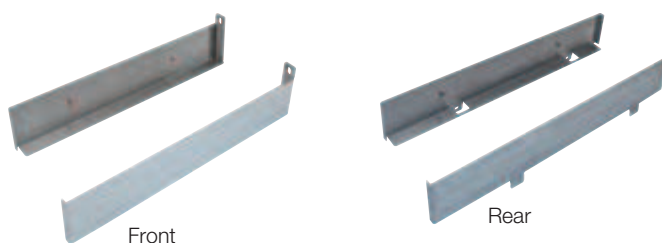


Material	Front - W x H x D: 470 x 71 x 390 mm (18 1/2" x 2 13/16" x 15 3/8")	Rear - W x H x D: 390 x 71 x 470 mm (15 3/8" x 2 13/16" x 18 1/2")
Birch	546.04.882	546.04.890
Walnut	546.04.782	546.04.790

Supplied With

1 Box

→ Bracket Set



Material/ Finish	Front set for 390 mm (15 3/8") deep box	Rear set for 470 mm (18 1/2") deep box
Steel/silver	546.04.902	546.04.900
Steel/champagne	546.04.802	546.04.800
304 Stainless Steel/brushed	546.04.002	546.04.000

Supplied With

1 Set (LH/RH) metal brackets
4 Stainless steel barrel nuts

Dimensional data not binding. Dimensions in mm, inches are approximate. We reserve the right to alter specifications without notice.