

SLIDO® POCKET DOOR INSTALLATION INSTRUCTIONS

INSTALLATION INSTRUCTIONS FOR KIT NUMBERS:

Maximum 110 lbs.

499.72.113: Pocket Frame Kit w/o soft close
499.72.114: Pocket Frame Kit with soft close

Maximum 176 lbs.

499.72.123: Pocket Frame Kit w/o soft close
499.72.124: Pocket Frame Kit with soft close

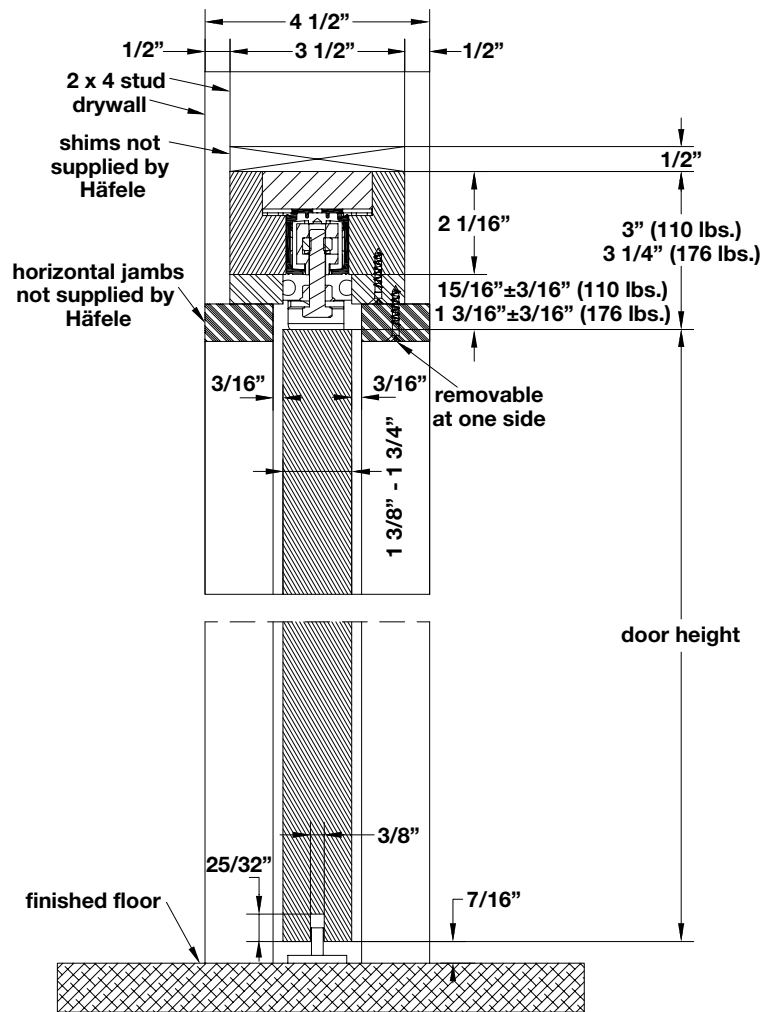
Estimated
Install
Time



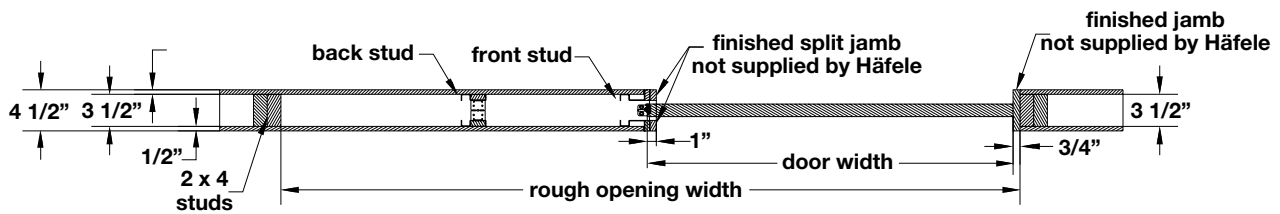
First Time: 1 hr.

Experienced: 1/2 hr.

CROSS SECTION VIEW OF POCKET DOOR



PLAN VIEW OF POCKET DOOR



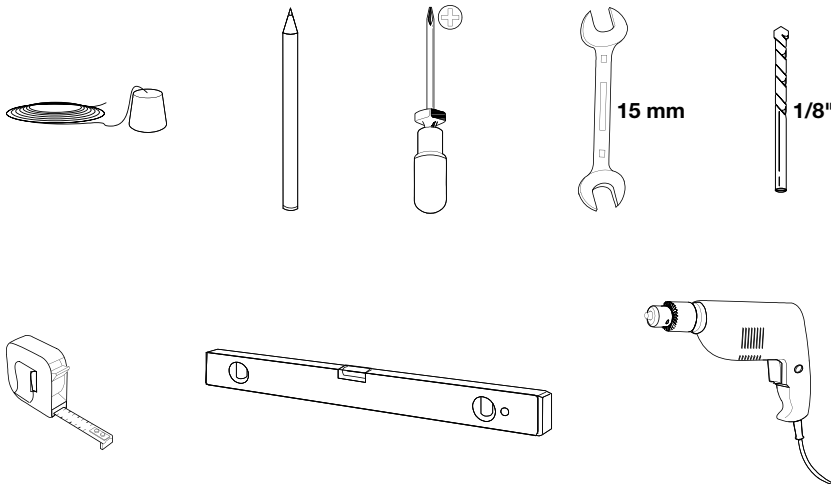
INSTALLATION INSTRUCTIONS

The installation of Häfele sliding door hardware requires a working knowledge and experience in the use of tools, equipment and the methods necessary for the installation of wood doors. This assumes a familiarity with preparing a proper and structurally sound opening, and assumes an understanding of the fundamentals of building construction that affect the installation of residential and commercial door systems.

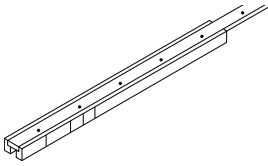
**IMPORTANT: READ COMPLETE INSTRUCTIONS BEFORE BEGINNING INSTALLATION.
INSTALL AS RECOMMENDED OR DOOR MAY NOT FUNCTION PROPERLY.**

CAUTION: It is the responsibility of the building owner, architect, contractor or installer to insure that products selected conform to all applicable codes and regulations. Häfele America Co. assumes no liability for the failure of the building owner, architect, contractor, or installer to comply with all applicable laws, ordinances, safety regulations and building codes.

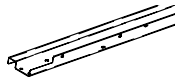
TOOLS REQUIRED:



PARTS SUPPLIED:



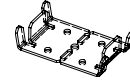
(1) Assembled Header



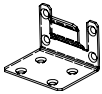
(2) Front Vertical Studs



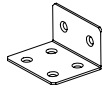
(2) Back Vertical Studs



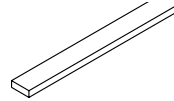
(2) Shoe Plates



(1) Concealed End Bracket



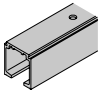
(1) Open End Bracket



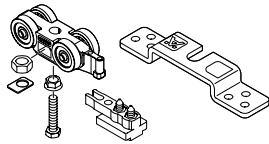
(2) Filler Strips



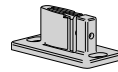
Screws



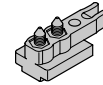
Upper Track



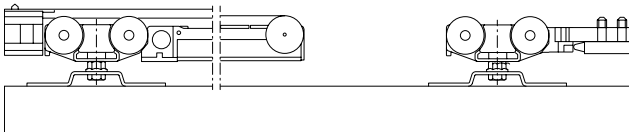
(2) Sets of Running Gear with 2 Suspension Plates for kits 499.72.113 and 499.72.123



(1) Floor Guide



(1 or 2) Track Stoppers



(1) set of running gear and (2) suspension plates for kits 499.72.114 and 499.72.124

- Check all parts carefully before assembly
- Check that the sizes of the components match what was ordered
- Compare to the elevation drawing indicating size and configuration
- All handles, pulls and locks are ordered separately
- Parts supplied are for one wood door only
- Order additional kits for each wood door

STORAGE & HANDLING

On delivery, inspect the order to be certain it is in good condition. Store all parts in a clean and dry location that offers protection against damage. Make sure any small parts, such as screws, are stored in a manner to prevent loss or misplacement. Do not subject wood parts to extreme or rapid changes in heat or humidity.

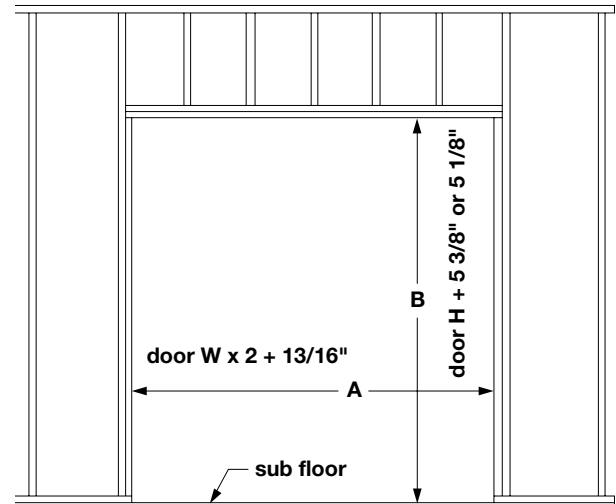
STEP 1: ROUGH OPENING DIMENSIONS FOR FRAMERS

- Multiply the door width by 2 and add 13/16" (A) for the width and add 5 3/8" using the Slido D-Line11 80P and 5 1/8" using the Slido D-Line11 50P to the door height (B) for adequate clearance and adjustment space
- The rough opening should be level, plumb and square
- The sides should be on the same vertical plane and not offset

Note

The frame height is measured from the bottom of the subfloor and not from the finished floor.

CONSTRUCTION OF ROUGH OPENING



STEP 2: MEASURE AND ATTACH BRACKETS

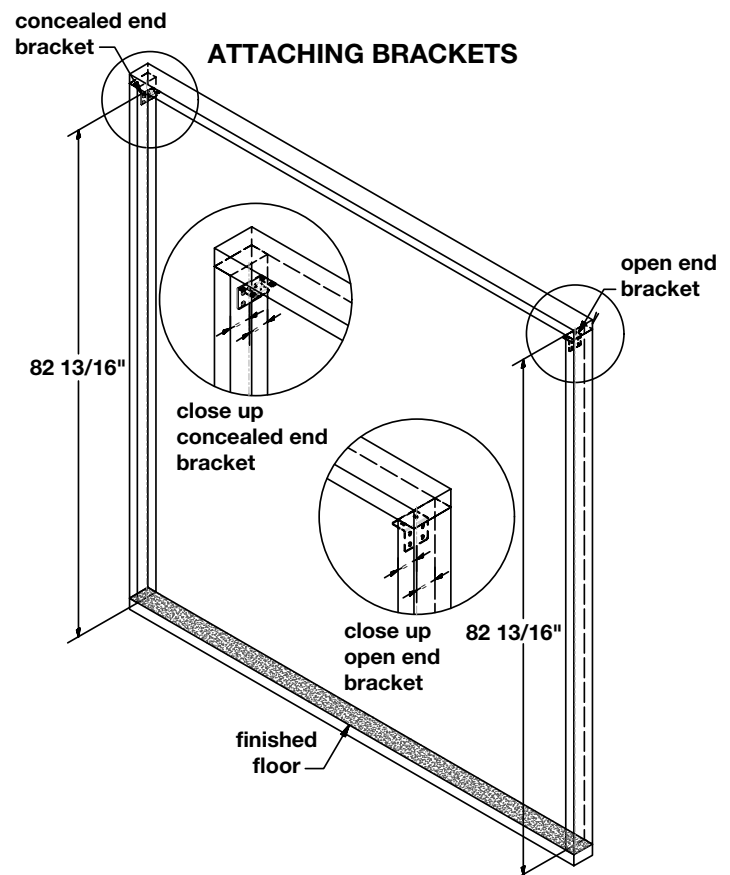
The Open End Bracket mounts on the open side of the pocket door while the Concealed End Bracket is mounted on the closed side (pocket side) of the door.

If the finished floor is **level**:

- Determine mounting locations of the Open End Bracket and the Concealed End Bracket (see drawing below)
- Note the type of finished floor and account for the floor height when measuring the distance
- For an 80" door, measure to 82 13/16" from the finished floor and mark the location of the brackets using a builder's square
- Center bracket on the stud and attach with supplied screws
- To level the brackets, attach to only one side of the door frame then, using the attached bracket side as a benchmark, measure across the opening
- Attach the remaining bracket with supplied screws

If the finished floor is **not level**:

- For the door to operate accurately, level where the floor is at its highest point
- Mark the location of the bracket on the high side
- Align the top of the appropriate bracket with the mark on the stud
- Check that the bracket is centered and level horizontally
- Attach with the supplied screws



STEP 3: PREP FOR HEADER AND UPPER TRACK

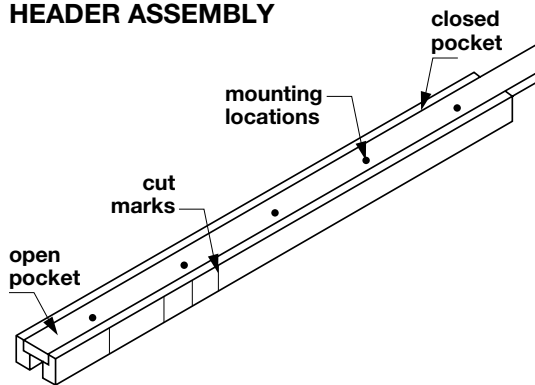
The Header and Track in this kit will fit a 40" wide door without modification. For other even-numbered, standard door sizes, the Upper Track and the Header are marked at the 24", 28", 30", 32", and 36" increments. If the door size is an odd measurement, the Header and Upper Track will have to be manually measured and marked.

TRIMMING INSTRUCTIONS (ONLY IF THE DOOR LENGTH IS LESS THAN 40")

Cut the wood Header at the size markings for your door width. If needed, cut the Upper Track or the Header both on the right and the left sides.

CAUTION: If the Upper Track is cut only on one side the pre-set screw on the Header assembly will no longer be centered and must be repositioned.

HEADER ASSEMBLY



Drill equally spaced holes across the Header in several locations (see drawing to the left). Start the first hole about 4" from the edge, drill holes about every 16" across the Header assembly.

Note

The label on the Header marks cut points on the door side of the Header which are different for a single pocket than for a bi-parting pocket door. The cut points on the pocket side of the header are identical for either application.

Use the appropriate screws (dependent upon the adjacent substrate and construction). Screws should penetrate enough to withstand the maximum rated structural load for the opening. In general, a wood frame would take a #8 wood screw with a 2 1/2" embedment.

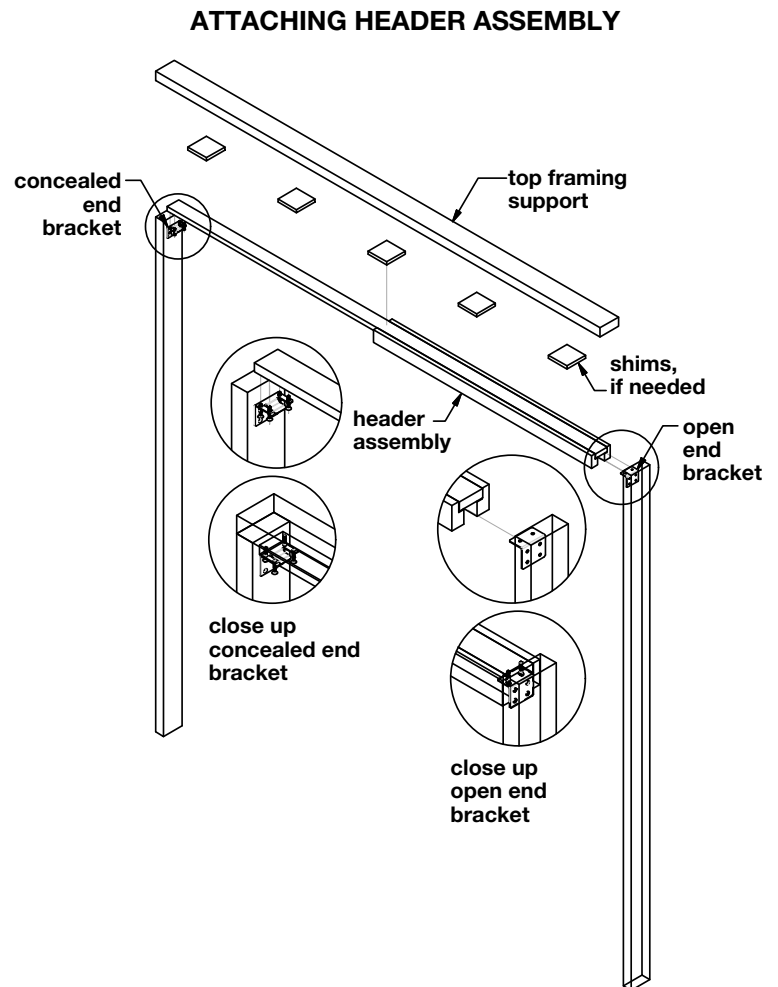
STEP 4: ATTACH THE HEADER ASSEMBLY

The Header Assembly will be held in place by the Header Brackets mounted in Step 3. The Open End Bracket is mounted in the door opening, the Closed End Bracket is mounted in the pocket.

- Mount the Header Assembly that was prepped in Step 3 by inserting the slit in the open pocket end into the Open End Bracket as shown in the drawing
- Rest the closed end of the Header Assembly on the Concealed End Bracket
- Use holes in the bracket as a template and pre-drill
- Attach with the supplied screws
- Affix Header Assembly to the top of the rough opening (see drawing) and mount square to the studs using the pre-drilled holes
- Shims can be used, if necessary, only if the shim is not forced or does not cause bowing or any unevenness

Note

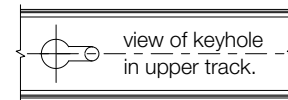
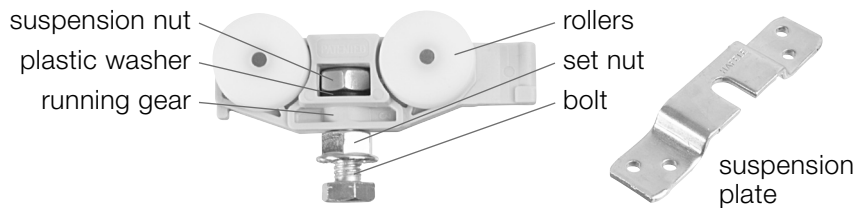
All the surfaces of the Upper Track must be clean and free of cuttings from drilled holes or other debris to ensure smooth rolling of the Running Gear.



STEP 5: ASSEMBLE RUNNING GEAR



- Insert the Rubber Washer and Suspension Nut into the Running Gear (see drawing)
- Screw the Set Nut onto the Suspension Bolt
- Insert the Suspension Bolt into the Running Gear and screw to tighten
- Check that the Running Gear rollers are facing up



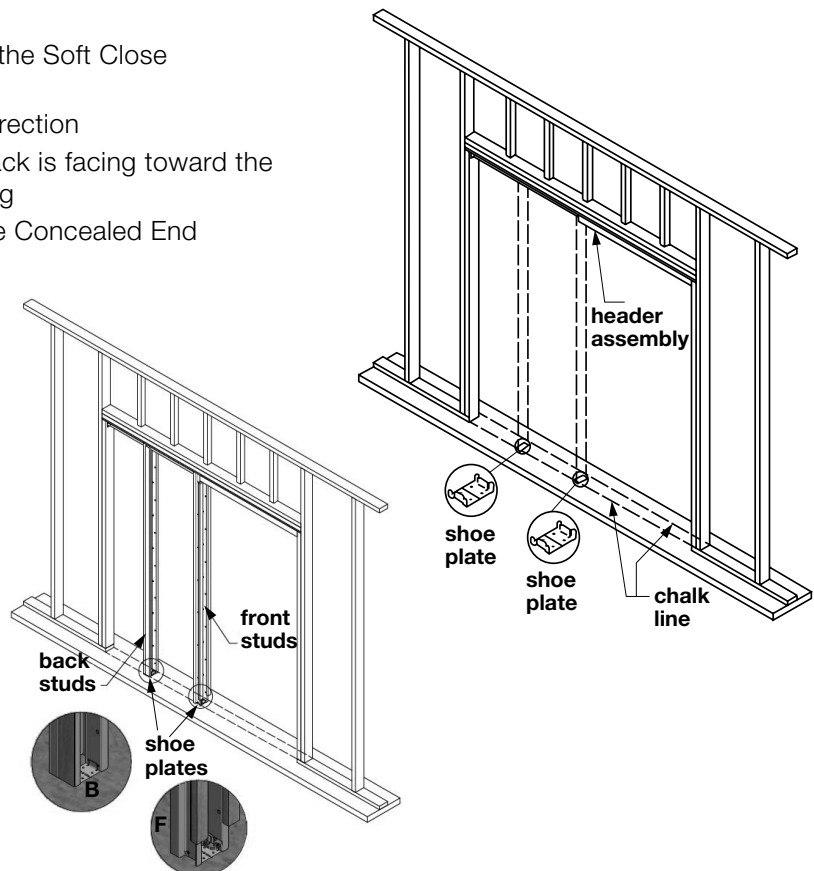
STEP 6: INSTALL UPPER TRACK

- Insert Running Gears, Track Stoppers, and/or the Soft Close Mechanism into the Upper Track
- Check that all parts are facing in the correct direction
- Check to see that the keyhole in the Upper Track is facing toward the closed pocket side of the door before mounting
- Insert the Upper Track into the open end of the Concealed End Bracket on the pocket side
- Slip the keyhole in the Upper Track over the pre-mounted pan head screw in the Header
- Screw Upper Track to the header in the accessible area of the opening
- After the door is hung, adjust height by screwing the Suspension Bolt into or out of the Running Gear
- Once the final adjustment is made, lock the Suspension Bolt in place by tightening the Set Nut to the Suspension Plate

Note

All the surfaces of the Upper Track must be clean and cleared of debris such as cuttings from drilled holes to allow smooth rolling of the Running Gear.

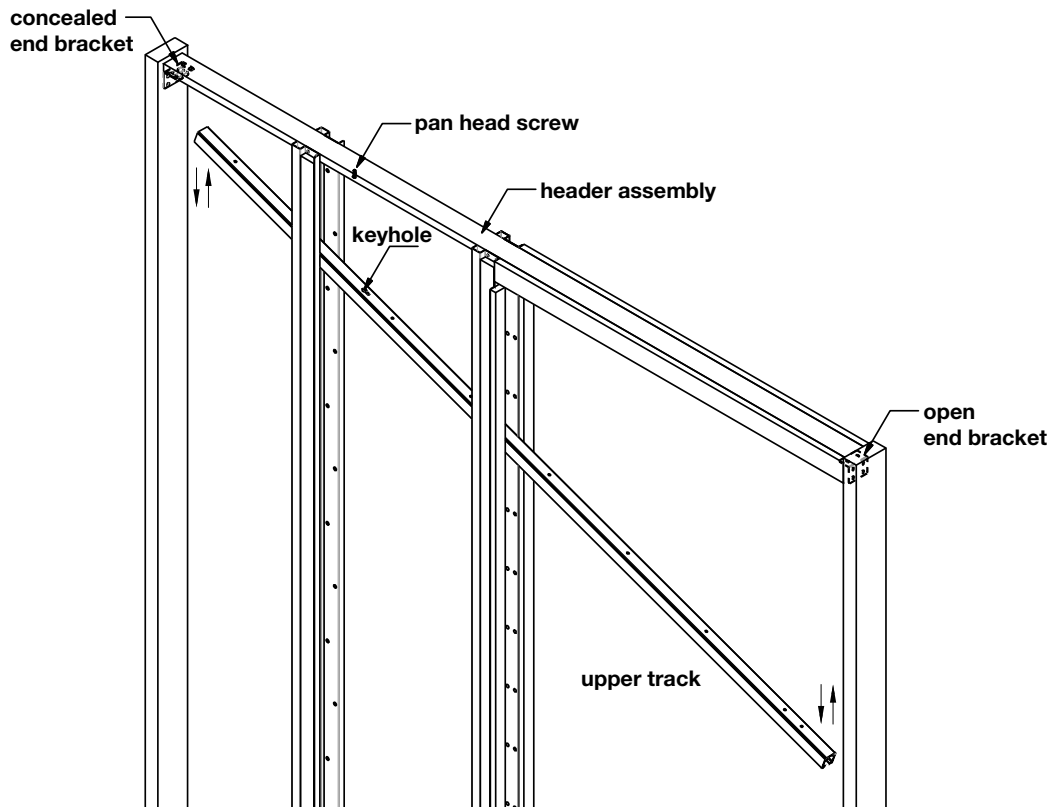
VERTICAL STUD PLACEMENT



STEP 7: MOUNT SHOE PLATES & VERTICAL STUDS

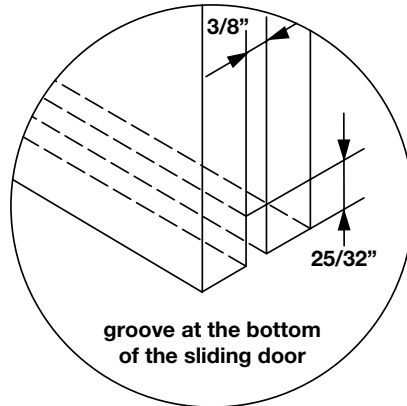
Measure the height of the Vertical Steel Studs and if needed, cut to size. Only cut from the end of the Stud without pre-drilled holes. Insert one of the Front Vertical Studs into the Shoe Plate. Next, attach the Front Vertical Stud to the Header. Use a level to plumb and then attach the Shoe Plate to the floor with the supplied screws. Slip the second Front Vertical Stud in the Shoe Plate and mount to the Header. Repeat these steps for the Back Vertical Stud. Please make sure that the Back Vertical Stud is equidistant between the Front Vertical Stud and the wall structure.

INSTALL UPPER TRACK

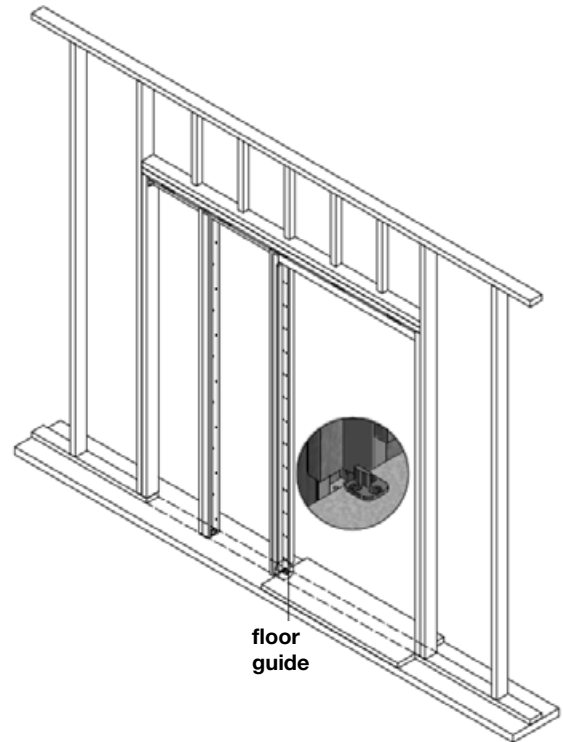


STEP 8: PREP THE FLOOR GUIDE

Align the Floor Guide with the split jamb. Be sure to position the Floor Guide correctly. If it is too far back, it will miss the door, if too far forward it will protrude into the opening. If the door does not have a pre-fabricated groove, mill a groove in the bottom of the sliding door. The groove should be $\frac{3}{8}$ " wide and $\frac{25}{32}$ " high (see drawing below). Depending on the height of the finished floor, you may need to add a block of wood under the Floor Guide to accommodate appropriate spacing. Mount Floor Guide between the Front Vertical Studs as shown on the right.

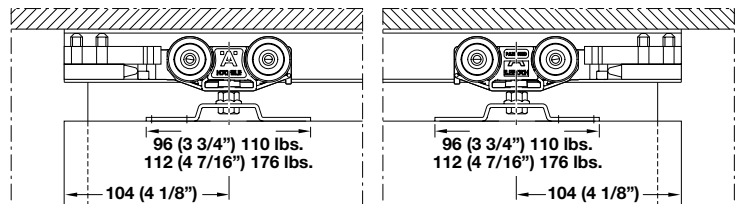


FLOOR GUIDE PLACEMENT

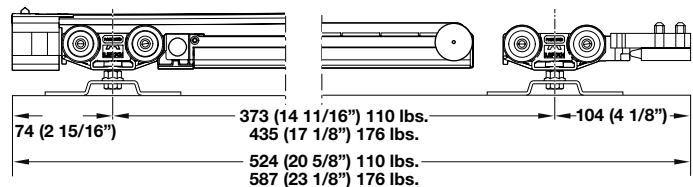


STEP 9: MOUNT SUSPENSION PLATES

For kits **without** a Soft Close Mechanism, measure $4 \frac{1}{8}$ " from the edge to the center of the Suspension Plate (see drawing to the right) on both sides. Pre-drill holes. Attach with 4 screws in any of the five screw holes. Repeat on the opposite side.

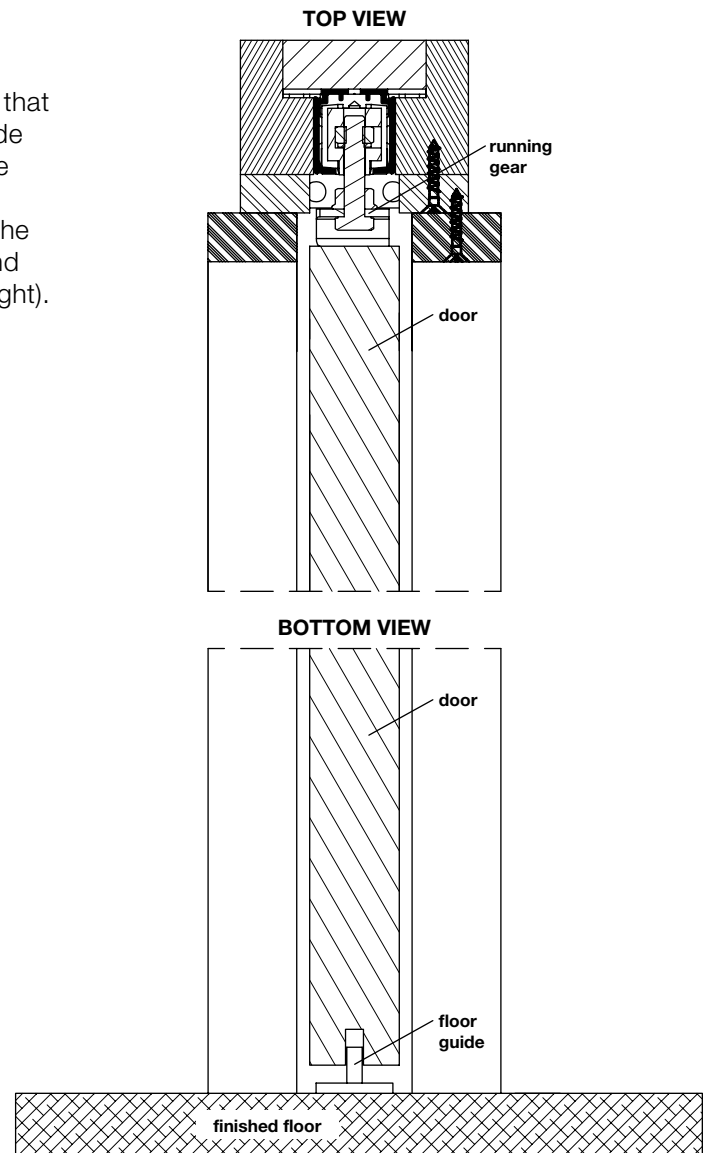


For kits **with** Soft Close, measure $2 \frac{15}{16}$ " from the edge to the center of the Suspension Plate on the side with the Soft Close Mechanism and $4 \frac{1}{8}$ " on the side with Running Gear (see drawing to the right). Pre-drill holes. Attach as described above.



STEP 10: HANG DOOR

Hang door onto Suspension Bolts and adjust the door so that it is plumb, square and level with the jamb on the open side of the pocket door. Recommended clearance between the finished floor and the bottom of the door is approximately 7/16". Adjust the Door Stoppers or the release device of the Soft Close mechanism so the door stops in the correct and final position before hitting the wall (see drawings to the right).



STEP 11: MOUNT FILLER STRIP

Mount Filler Strips to the Header on the left and right. Be sure to screw in one Filler Strip so that it is removable for service later, if needed.

STEP 12: APPLY WALL MATERIAL

Apply the wall board to both sides of the Frame and Header.

Note

Use screws that do not protrude into the pocket cavity to prevent damage to the door.

STEP 13: ADD DOOR TRIM

Attach finished Door Trim to complete installation.



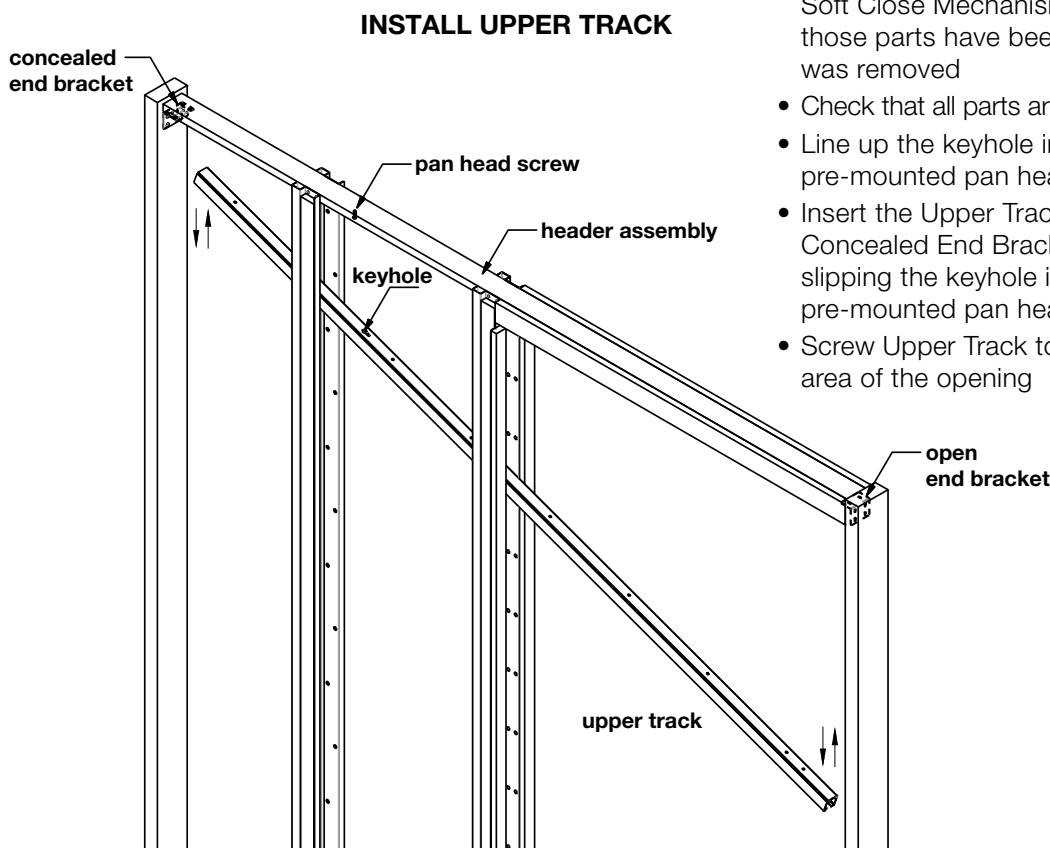
STEP 14: REMOVING THE UPPER TRACK AFTER INSTALLATION

Occasionally, the Upper Track may require service or an adjustment, the Slido Pocket Door Hardware kit was designed to make servicing fast, easy and manageable without tearing out drywall.

- Remove one side of the finished top split jamb as well as the filler strip to access the sliding hardware
- Loosen the Set Nuts in the Running Gear above the Suspension Plates
- Remove pocket door by lifting the door up slightly and sliding the door away from Running Gear; set door aside
- Remove screws holding the Upper Track in place
- Disconnect the track from the Closed End Bracket on the closed side of the pocket
- Slide the keyhole in the Upper Track toward the open side of the pocket, to release the "lock" the pan head screw has formed with the keyhole
- Remove track with Running Gear, Track Stoppers and/or Soft Close Mechanism
- Adjust or service parts required for proper operation

STEP 15: REINSTALLING THE UPPER TRACK AFTER INSTALLATION

After the required servicing is done, the Upper Track is ready to be reinstalled and the door placed back on the Upper Track.



- Insert Running Gears, Track Stoppers, and/or the Soft Close Mechanism into the Upper Track if those parts have been removed when the track was removed
- Check that all parts are facing in the correct direction
- Line up the keyhole in the Upper Track with the pre-mounted pan head screw
- Insert the Upper Track into the open end of the Concealed End Bracket on the pocket side while slipping the keyhole in the Upper Track over the pre-mounted pan head screw in the Header
- Screw Upper Track to the header in the accessible area of the opening