



SLIDING DOOR
HARDWARE SOLUTIONS

THE WORLD'S SOURCE FOR THE FINEST HARDWARE

Pros in the know pick Häfele. For over 90 years, architects, millworkers and contractors have picked Häfele for their commitment to quality, selection and service. With over 3,000 sliding door hardware products, Häfele always has exactly what you need.



ADVANTAGES



Our famed German engineering results in smoother sliding and easier installation.

Get the Häfele advantage on your next sliding door project.

FLAT TRACK BARN DOOR HARDWARE

Our most popular barn door design for wood doors is available in a matt black or 304 grade stainless steel finish. This home buyer's favorite adds style while saving space.

ALL FLAT TRACK BARN DOOR KITS INCLUDE:

- Straight or top-mount hanger
- Upper running track
- Track stoppers
- Wall attachment with mounting hardware
- Anti-derail block
- Floor guide
- Hex key/drill bit

SPEC REQUIREMENTS:

- Maximum door weight: 220 lbs.
- Maximum door width: 48"
- Maximum door height: 108"
- Maximum door thickness: 1 3/8"–1 3/4"

ORDERING INFORMATION:

TRACK LENGTH: 6' 6 3/4"

- Flat Track Straight Hanger kit in matt black: 941.32.021
- Flat Track Top-Mount Hanger kit in matt black: 941.32.023
- Flat Track Straight Hanger kit in 304 stainless steel: 941.32.025
- Flat Track Top-Mount Hanger kit in 304 stainless steel: 941.32.027

TRACK LENGTH: 8' 2 7/16"

- Flat Track Straight Hanger kit in matt black: 941.32.022
- Flat Track Top-Mount Hanger kit in matt black: 941.32.024
- Flat Track Straight Hanger kit in 304 stainless steel: 941.32.026
- Flat Track Top-Mount Hanger kit in 304 stainless steel: 941.32.028

OPTIONAL SOFT CLOSE

- Accessories section, refer to page 14

BARN DOOR
THAT'S BIG,
BAD AND...
BRILLIANT

OPTIONAL
SOFT
CLOSE

SLIDO® POCKET DOOR HARDWARE

You wanted a better pocket door. We listened. Our design features specially bent steel studs to prevent wall bowing and the flexibility to accommodate standard 2x4 interior walls. And you can remove track without tearing out drywall for easy service after installation.

ALL SLIDO POCKET FRAME KITS INCLUDE:

- Header assembly
- Front and back vertical studs with aspen wood strip
- Shoe plate for vertical studs
- Concealed end bracket for header and upper track
- Open end bracket for header
- Filler strip
- Upper track with keyhole
- Screw pack

NOTE:

For bi-parting applications, order 2 sets.

SPEC REQUIREMENTS:

- 2 Door weights: 110 or 176 lbs.
- Maximum door width: 40"
- Maximum door height: 6' 8"
- Maximum door thickness: 1 3/4"

ORDERING INFORMATION:

DOOR WEIGHT: 110 LBS. MAXIMUM

- Slido Pocket Frame kit w/o soft close: 499.72.113
- Slido Pocket Frame kit with soft close: 499.72.114

DOOR WEIGHT: 176 LBS. MAXIMUM

- Slido Pocket Frame kit w/o soft close: 499.72.123
- Slido Pocket Frame kit with soft close: 499.72.124

OPTIONAL
SOFT
CLOSE

PICTURE
THE
PERFECT
POCKET.

SLIDO® BYPASS DOOR HARDWARE

The ceiling mounted bypass door, long a staple of modern closets, has never been quieter or smoother. We've added four soft close options to perfectly fit several door weights and widths. Each kit sold as a single sliding door (purchase two to create a bypassing door system.)

ALL SLIDO BYPASS KITS INCLUDE:

- Floor guide
- Track stopper with retaining spring and rubber stopper
- Release device with stopper
- Running gear
- Suspension screw/nut with flange
- Single running track

SPEC REQUIREMENTS:

- Maximum door weight: 110 or 176 lbs.
- Maximum door width: 40"
- Maximum door height: 108"
- Maximum door thickness: 1 3/8"–1 3/4"

ORDERING INFORMATION:

- Slido Sliding Door kit 110 lbs. w/o soft close: 499.72.110
- Slido Sliding Door kit 176 lbs. w/o soft close: 499.72.120

SOFT CLOSE OPTIONS:

ONE SIDE, DOOR WIDTH MINIMUM: 19 5/8"

- Slido Sliding Door kit 110 lbs.: 499.72.111
- Slido Sliding Door kit 176 lbs.: 499.72.121

DOOR WIDTH MINIMUM: 29 9/32"

- Slido Sliding Door kit 110 lbs.: 499.72.112
- Slido Sliding Door kit with 176 lbs.: 499.72.122

OPTIONAL
SOFT
CLOSE

A BYPASS
YOU CAN'T
PASS BY.

SLIDO® BI-FOLD DOOR HARDWARE

One touch is all it takes. Feel the sleek, flowing movement and the heft of sturdy construction designed to last through years of constant use. Designed for flexibility, our bi-fold system pivots to the right or left, mounts to the side or floor and is suitable for residential or light commercial projects. Meets ANSI/BHMA standard A156.14

THE SLIDO BI-FOLD KIT INCLUDES:

- Upper running gear with suspension plate
- Upper pivot with suspension plate
- Lower pivot for wall mounting
- Pivot plate
- Stop bracket
- Butt hinges
- Wrenches
- Mounting screws
- 4 ft. upper track

SPEC REQUIREMENTS:

- Maximum panel weight: 66 lbs.
- Maximum panel height and width: 108" x 24"
- Panel thickness min/max: 1" – 1 3/4"

ORDERING INFORMATION:

- Slido Classic Bi-fold kit with 4 ft. track: 943.51.002

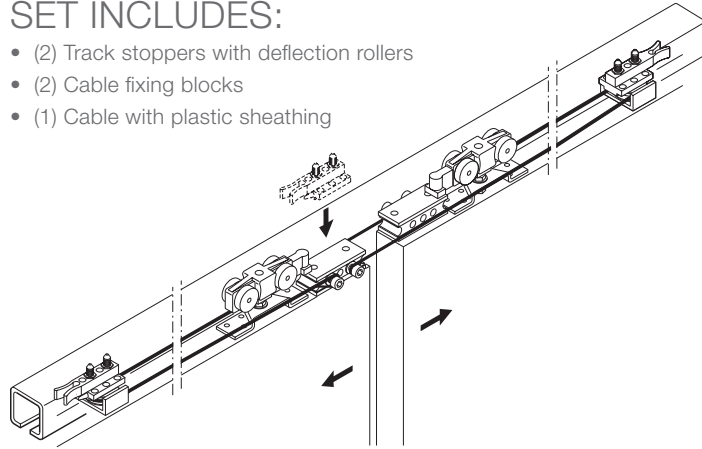
WE BUILT
A BETTER
BI-FOLD.

THE SLIDO® CLASSIC SYNCHRO SET

The Slido Classic Synchro set provides a symmetrical opening for two bi-parting doors. You only need to order one Synchro set to support two Slido Sliding Door kits. (Not compatible with soft close mechanisms.)

THE SLIDO CLASSIC SYNCHRO SET INCLUDES:

- (2) Track stoppers with deflection rollers
- (2) Cable fixing blocks
- (1) Cable with plastic sheathing



ORDERING INFORMATION:

DOOR WIDTH: 23 5/8" – 59 1/16"

- The Slido Classic Synchro set for two doors: 940.44.000 (1)
- The Slido Sliding Door Kit for door weight: 110 lbs. 499.72.110 (2)
176 lbs. 499.72.120 (2)

POCKET DOOR JAMB BOLT LOCK COMPLETE SETS

NOTE:

Face mount at pocket door rear to act as a privacy bolt.

ORDERING INFORMATION:



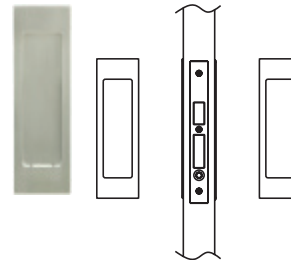
- Specs (H x W): 3 1/16" x 1 3/16"
- Jamb Bolt Lock set in oil-rubbed bronze: 911.26.250
- Jamb Bolt Lock set in brushed nickel: 911.26.256

SLIDING POCKET DOOR LOCKS

Privacy Lock includes an emergency opening from outside using coin release. The Lockcase has a dust-proof strike on the inactive side of a pair of sliding doors with a push-button, edge pull. The Mortise Lock includes: compass bolt, lock, face plate, strike plate, lock case, flush and front handles.

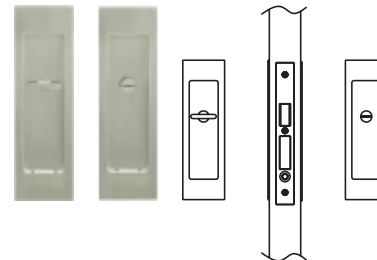
ORDERING INFORMATION:

LOCKCASE



- Specs (H x W): 7 7/8" x 2 3/8"
- Backset: 2 3/4"
- Lockcase with dust-proof strike in oil-rubbed bronze: 911.26.781
- Lockcase with dust-proof strike in satin nickel-plated: 911.26.782

PRIVACY LOCK



- Specs (H x W): 7 7/8" x 2 3/8"
- Backset: 2 3/4"
- Privacy Lock with emergency release in oil-rubbed bronze: 911.26.702
- Privacy Lock with emergency release in satin nickel-plated: 911.26.792

MORTISE LOCK SET



- Faceplate (H x W): 6 7/32" x 5/8"
- Backset: 1 31/32"
- Flush Handle (H x W x D): 1 15/16" x 2 1/4" x 1 3/8" – 1 3/4"
- Front Handle (H x W x D): 31/32" x 13/16" x 15/16"
- Mortise Lock polished brass and nickel matt set: 911.26.084

POCKET DOOR EDGE PULL

ORDERING INFORMATION:



- Specs (H x W): 8" x 2 5/32"
- Backset: 3 1/8"
- Spring loaded Edge Pull set in stainless steel: 911.26.310



- Specs (H x W): 4 11/16" x 25/32"
- Brass front drop Edge Pull set in polished nickel: 911.26.246

FLUSH PULL

NOTE:

Recess door measurements: 4 13/16" x 1 3/16" x 1/2"

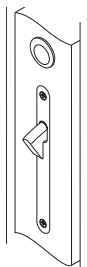
ORDERING INFORMATION:



- Specs (H x D): 5 7/8" x 1 15/16"
- Inset (L x D): 4 3/16" x 9/16"
- Glue-in Flush Pull set in matt stainless steel: 902.01.522

POCKET DOOR EDGE PULL

ORDERING INFORMATION:



- Specs (H x W x D): 31/32" x 1 3/16" x 15/16"
- Brass Front Handle in nickel-plated matt: 911.26.105

OPTIONAL SOFT CLOSE MECHANISM FOR BARN DOOR HARDWARE

ORDERING INFORMATION:



LEFT SIDE SOFT CLOSE

- Flat Track Soft Close kit 88 lbs.: 941.32.015
- Flat Track Soft Close kit 176 lbs.: 941.32.017
- Flat Track Soft Close kit 220 lbs. max.: 941.32.019

RIGHT SIDE SOFT CLOSE

- Flat Track Soft Close kit 88 lbs.: 941.32.016
- Flat Track Soft Close kit 176 lbs.: 941.32.018
- Flat Track Soft Close kit 220 lbs.: 941.32.020

BARN DOOR PRIVACY LOCK

An ingenious and beautifully engineered solution for residential and commercial applications. The design includes a tubular bolt installed in the jamb with an adjustable strike and an emergency release button. Lock sets, strikes, trim and thumb-turns available in several sizes and finishes listed below. Includes spindle, screws and emergency key. Suitable for door thicknesses 1 3/8" – 1 3/4". Works for either right or left hand orientation.

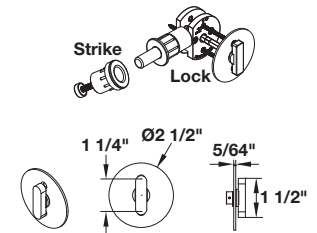
ROUND LOCK

ROUND 3 1/2" BACKSET

- ADA approved T1 thumb-turn with round trim in matt black Ø2 1/2": 911.27.052

ROUND 2 1/4" BACKSET

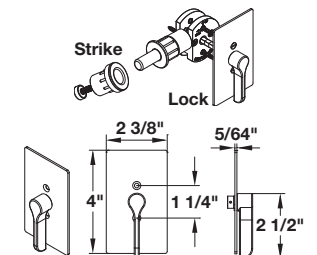
- ADA approved T1 thumb-turn with round trim in matt stainless steel Ø2 1/2": 911.26.940
- ADA approved T2 thumb-turn with round trim in matt stainless steel Ø2 1/2": 911.26.950
- ADA approved T2 thumb-turn with round trim in matt chrome Ø2 1/2": 911.26.953



RECTANGULAR LOCK

RECTANGULAR 2 1/4" BACKSET

- ADA approved thumb-turn with rectangular trim in matt stainless steel W x L: 2 3/8" x 4": 911.26.990
- ADA approved thumb-turn with rectangular trim in matt black W x L: 2 3/8" x 4": 911.26.992





Häfele America Co.

3901 Cheyenne Drive | Archdale, NC 27263

Phone: 800 423 3531 | **Fax:** 800 325 6197

Showrooms: New York, Archdale, Los Angeles

www.hafele.com/us

®Slido is a registered trademark of Häfele GmbH & Co KG and/or Häfele America Co. Other trademarks referenced are owned by their respective owners. All rights reserved. Materials, designs and design elements shown herein may be the subject of US and International copyright and other forms of legal protection.