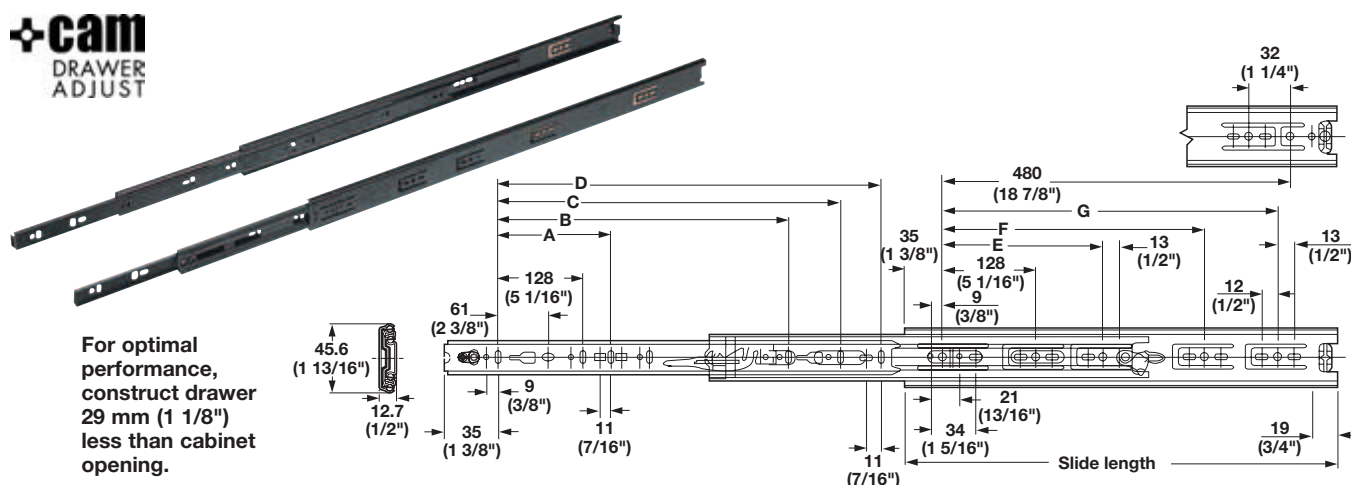


Accuride Full Extension, Telescopic, Detent Out



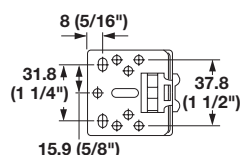
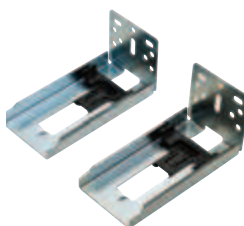
- > Weight capacity: 45 kg (100 lbs.)/pair
- > For drawers: max. 610 mm (24") wide
- > Hold-in detent
- > Easy lever disconnect
- > Special detent out to hold drawers in an open position
- > For keyboards or any application requiring a positive hold-out
- > For optimal performance make drawers 29 mm (1 1/8") less than cabinet opening
- > BMHA and AWI Certified Grade 1 HD-100
- > Specially crafted with longer spacers and extra bearings
- > Hold-out detent to keep pull-out surfaces solidly positioned
- > Material: Steel, electroplated

→ 3832EDO Side Mounted



Installed and extension length	zinc	black
305 (12")	422.91.931	422.91.331
356 (14")	422.91.936	422.91.336
406 (16")	422.91.941	422.91.341
457 (18")	422.91.946	422.91.346
508 (20")	422.91.951	422.91.351
559 (22")	422.91.956	422.91.356
610 (24")	422.91.961	-
660 (26")	422.91.966	-
711 (28")	422.91.971	422.91.371

→ Face Frame Rear Brackets, optional



> Material: Steel

Finish	Item No.
zinc-plated	422.59.002