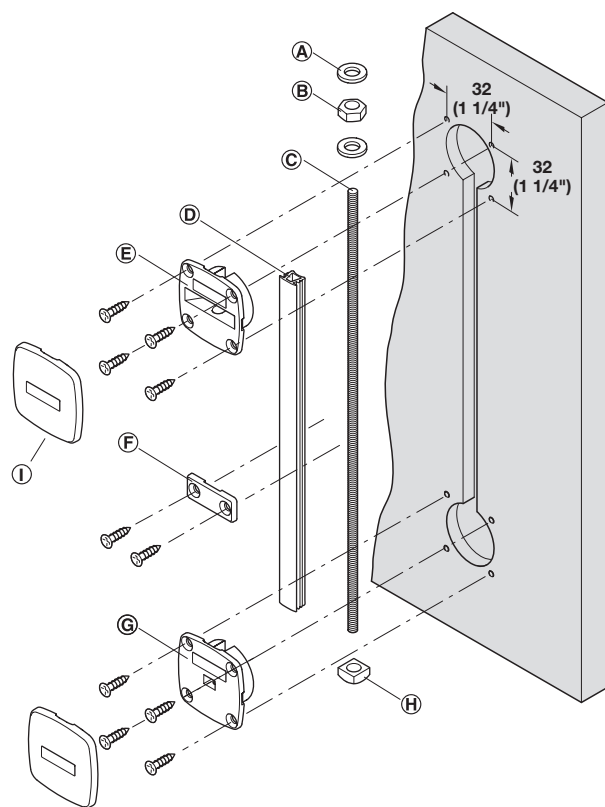


Planofit Set For Wood Doors



- > Door thickness: from 16 mm (5/8")
- > Door height: max. 2400 or 2650 mm (94 1/2" or 104 5/16")
- > Adds rigidity and prevents warping and twisting
- > Can be installed in new doors or retrofitted into existing doors
- > To straighten warped doors
- > Installation of two fittings per door is recommended
- > Not recommended for hard wood
- > Material: Threaded rod: Steel, galvanized
Tensioner: Zinc alloy, bright
Trim strip, Cover caps and Retaining plate: Plastic



- Ⓐ Lock washer
- Ⓑ Hexagon nut
- Ⓒ Threaded rod
- Ⓓ Trim strip
- Ⓔ Open-type tensioner
- Ⓕ Retaining plate
- Ⓖ Closed-type tensioner
- Ⓗ Square nut
- Ⓘ Cover Cap

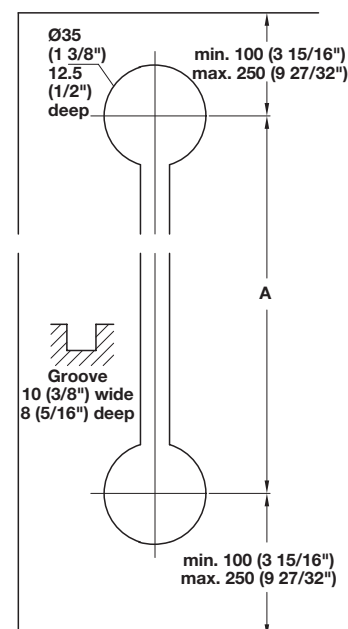
Door height	Dim. A	black	white
Max. 2400 (94 1/2")	<1900 (74 25/32")	407.90.010	407.90.012
Max. 2650 (104 5/16")	<2175 (85 5/8")	407.90.011	407.90.013

Supplied With

- 2 Threaded rods – 2195 mm (86 7/16")
- 2 Trim strips – 2138 mm (84 3/16")
- 4 Tensioners
- 2 Square nuts
- 2 Hexagon nuts
- 4 Cover caps (for open-type tensioner and closed-type tensioner)
- 8 Retaining plates
- 4 Lock washers

Note

Order 1 set per door.
The threaded rod as well as the trim strip are shortened proportionally, depending on the door height, to change the distance between the hole centers.
Open-ended 10 mm wrench is needed for adjustment.



Dimensional data not binding. Dimensions in mm, inches are approximate. We reserve the right to alter specifications without notice.