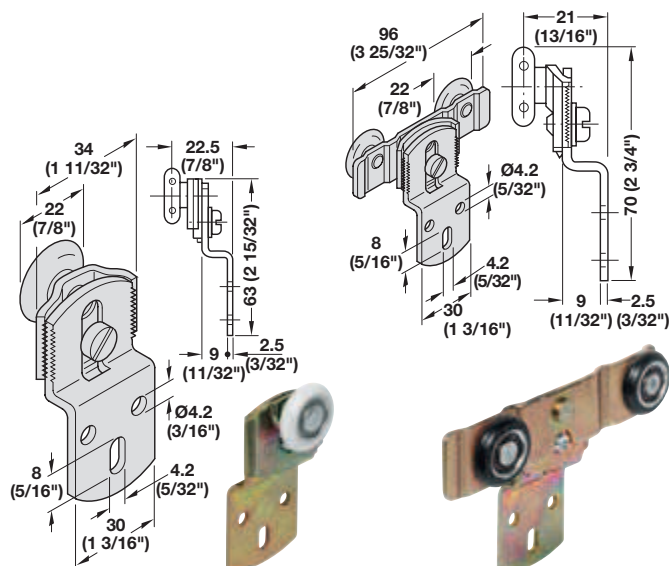


### Hangar 14/28 IF

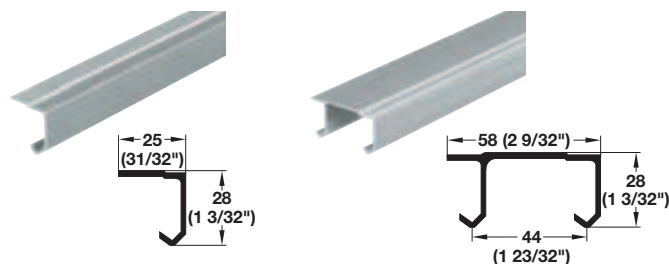
#### → Hangar 14/28 IF Running Gear



- > Version: With screw-on plate for lateral attachment
- > Material: Steel, yellow chromatinized

Suitable for	Item No.
Hangar 14	407.13.906
Hangar 28	407.14.903

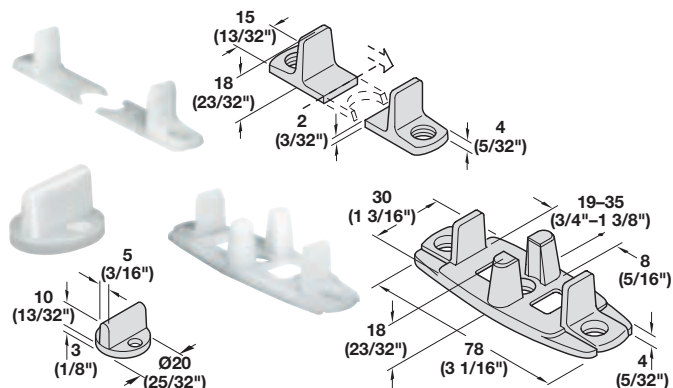
#### → Running tracks



- > Material: Aluminum, bright

Description	Length	Item No.
Single top running track, for screw mounting (with pre-drilled holes)	2.5 m (8' 2 7/16'')	407.10.042
	3.5 m (11' 5 13/16'')	407.10.043
Double top running track, for door thickness max. 35 mm (1 3/8''), for screw mounting (with pre-drilled holes)	2.5 m (8' 2 7/16'')	407.11.012
	3.5 m (11' 5 13/16'')	407.11.013

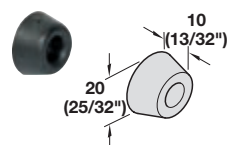
#### → Guides



- > Material: Plastic; Color: natural

Description	Item No.
Guide, for press fitting and screw mounting into drill hole	407.01.942
Single guide 2-piece, for screw mounting	407.01.960
Double guide, 2-piece, for door thickness 19–35 mm (3/4"–1 3/8"), for screw mounting	407.01.951

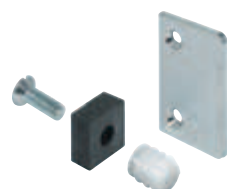
#### → Buffer



- > For screw mounting
- > Material: Rubber

Color	Item No.
black	407.01.930

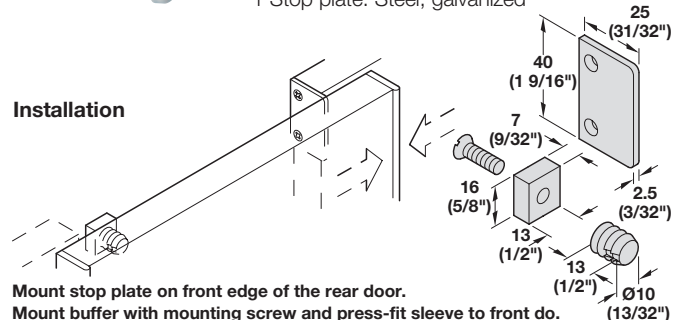
#### → Door Follower



Item No.
407.01.988

- Supplied with**
- 1 Press-fit sleeve: Polyamide
  - 1 Rubber buffer
  - 1 Screw
  - 1 Stop plate: Steel, galvanized

#### Installation



Mount stop plate on front edge of the rear door.  
Mount buffer with mounting screw and press-fit sleeve to front do.