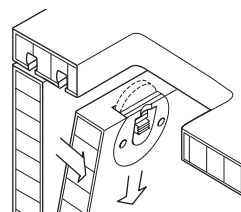
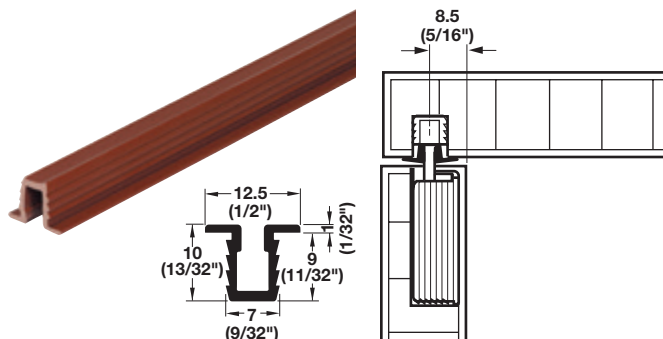


### Guide and Glide Fittings

- > Door weight: max. 12 kg (26 lbs.)
- > Fittings form combinations for sliding doors with upper and lower guides
- > Guide track is designed to be used both at the top and bottom of the cabinet
- > Bottom roller guide glides friction-free in the track



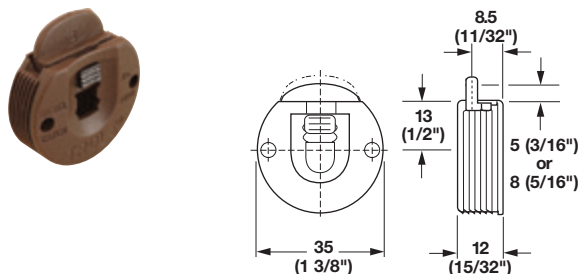
#### → Guide Track



- > Press-fit
- > With flanged edges and barbed shoulders
- > For top and bottom of cabinet
- > Material: Plastic

Color	2.5 m (8' 2 7/16")	3 m (9' 10 1/8")
brown	404.14.111	404.14.133
white	404.14.701	404.14.713
black	—	404.14.313

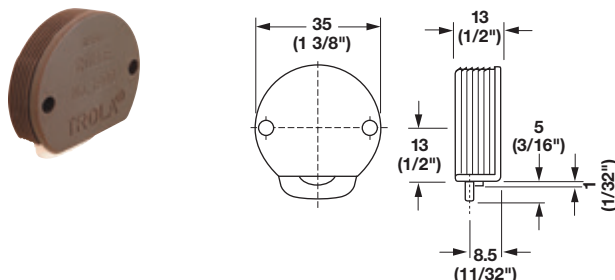
#### → Upper Guide



- > Press-fit
- > Lockable at 5 mm (3/16") and 8 mm (5/16")
- > Material: Plastic

Color	Item No.
brown	404.19.118
white	404.19.716

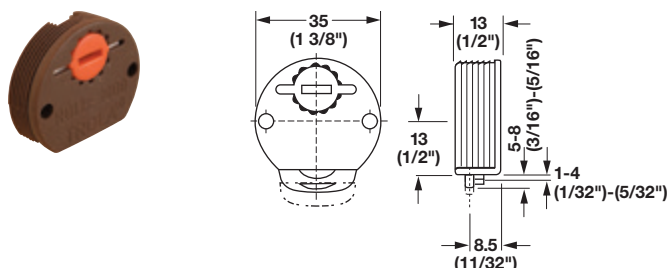
#### → Lower Roller



- > Press-fit
- > With steel spindle, nylon roller and guide
- > Material: Plastic

Color	Item No.
brown	404.20.120
white	404.20.728

#### → Lower Roller



- > Press-fit
- > With vertically adjustable steel spindle, nylon roller and guide
- > Material: Plastic

Color	Item No.
brown	404.20.139
white	404.20.737