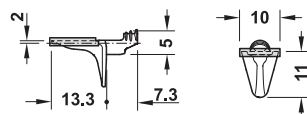


Supports for Glass Shelves

→ Ø5 mm



- > Patented design assures minimum lowering of shelf under heavy weight
- > With three wedged ribs
- > Weight capacity: 25 kg (55 lbs.)
- > Material: Zinc die-cast with transparent rubber pad

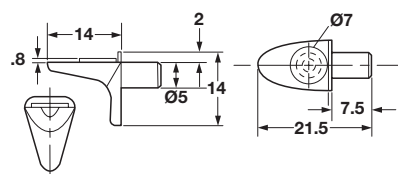
Finish

nickel-plated

Item No.

282.24.733

→ Ø5 mm



- > Material: Zinc die-cast; Pad: Rubber, transparent

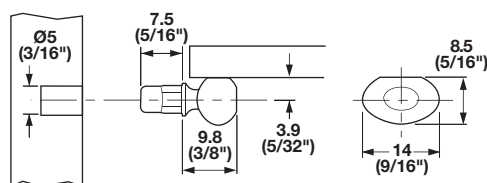
Finish

nickel-plated

Item No.

282.24.731

→ Ø5 mm



- > Material: Zinc alloy; Cap: Plastic/Rubber, transparent

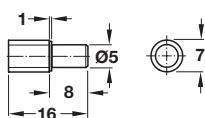
Finish

nickel-plated

Item No.

281.43.700

→ Ø5 mm

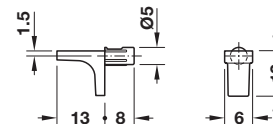


- > With cap
- > Material: Steel, galvanized; Cap: Plastic, transparent

Item No.

281.41.907

→ Ø5 mm



- > Material: Zinc die-cast

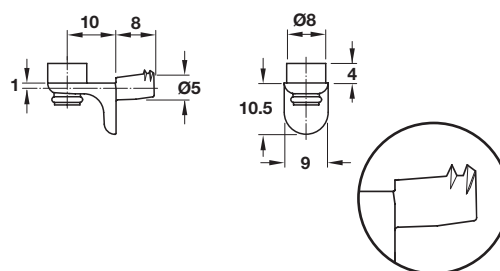
Finish

nickel-plated

Item No.

282.84.721

→ Ø5 mm



- > With 2 wedged ribs
- > Material: Zinc die-cast; Glass support: Plastic, transparent

Finish

nickel-plated

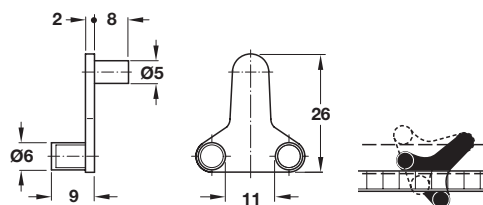
Item No.

282.24.730

Note

These ribs anchor themselves in the system holes due to pressure from the shelf. This is an important feature for areas prone to earthquakes.

→ Ex-Cellent H® Ø5 mm



- > Shelf clamp support
- > For glass thickness: 6–10 mm
- > Material: Zinc die-cast; Clamping pins: Plastic-coated

Finish

nickel-plated

Item No.

282.23.716