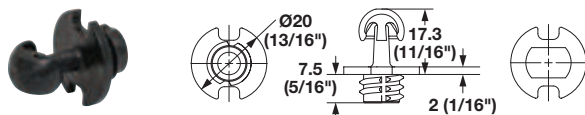


Fastmount® Panel Mounting System

- > No visible fittings
- > Self-aligning installation
- > Perfect alignment and secure mounting
- > Remove and refit panels multiple times
- > Allows for panel flex and expansion
- > Suitable for a variety of materials
- > Self-tapping fittings

→ Standard Profile, heavy-duty, male



- > Mounts into 10 mm drilled hole
- > Pull-out weight capacity per clip: 10 kg+
- > Material: Plastic

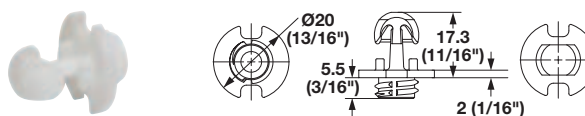
Color

black

Item No.

267.20.313

→ Standard Profile, male



- > Mounts into 10 mm drilled hole
- > Pull-out weight capacity per clip: 5 kg+
- > Material: Plastic

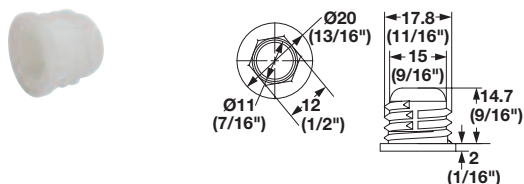
Color

white

Item No.

267.20.710

→ Standard Profile, female



- > Mounts into 16.8 mm drilled hole
- > Pull-out weight capacity per clip: 5 kg+
- > Material: Plastic

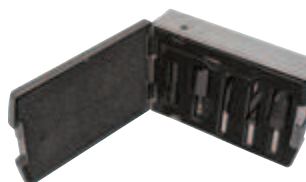
Color

white

Item No.

267.20.711

→ Complete Tool Kit



- > For standard profile range

Item No.

267.20.028

→ Drill Bit



- > Use to drill frame for Fastmount self-tapping female fitting
- > 16.8 mm drilling diameter
- > Material: Carbide-tipped

Item No.

267.20.032

→ Installation Tool



- > Use to install Fastmount self-tapping male fitting
- > Material: Aluminum

Finish

black

Item No.

267.20.029

→ Installation Tool



- > Use to install Fastmount self-tapping female fitting
- > Material: Aluminum

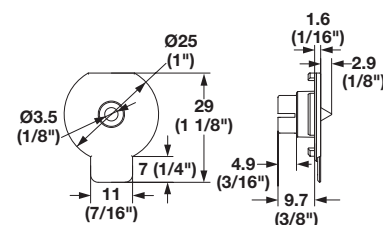
Finish

black

Item No.

267.20.040

→ Standard Profile, female



- > Use to mark drilling location for Fastmount male fitting

Item No.

267.20.941