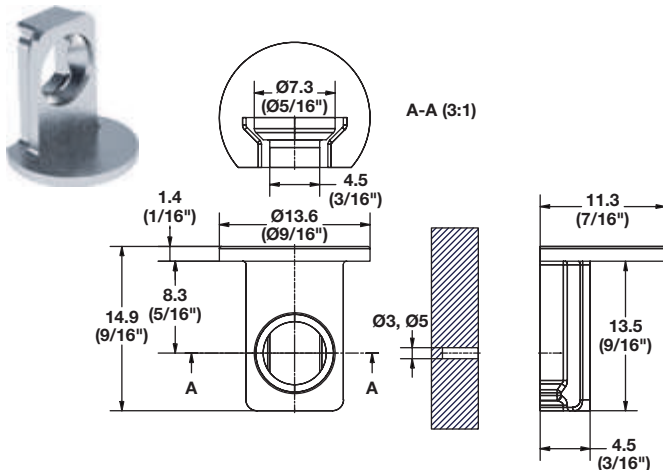


Maori Shelf Connector



- > Excellent support for fixed or adjustable wooden shelves
- > Small footprint creates pleasing aesthetic
- > Shelf insert can be secured with Ø3 mm screw
- > Stepped drill bit available for proper installation

→ Support



- > Material thickness: 19 mm
- > Screw mounted
- > Material: Zinc

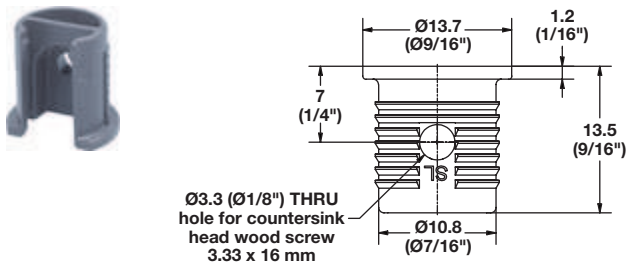
Finish

zinc-plated

Item No.

263.77.752

→ Shelf Insert



- > Material thickness: 19 mm
- > Drilling depth: 15 mm
- > Material: Plastic

Color

gray

Item No.

263.77.551

→ Step Drill Bit



- > For Maori shelf connector installation
- > Material: Steel

Item No.

001.06.309

Dimensional data not binding. Dimensions in mm, inches are approximate. We reserve the right to alter specifications without notice.