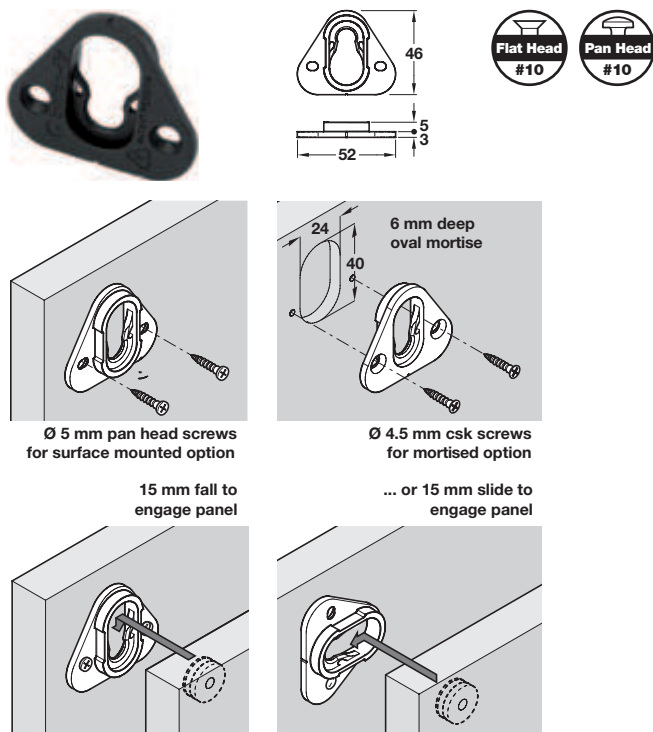


Button-fix™ Panel Connecting Fittings

→ Type 1 Fix

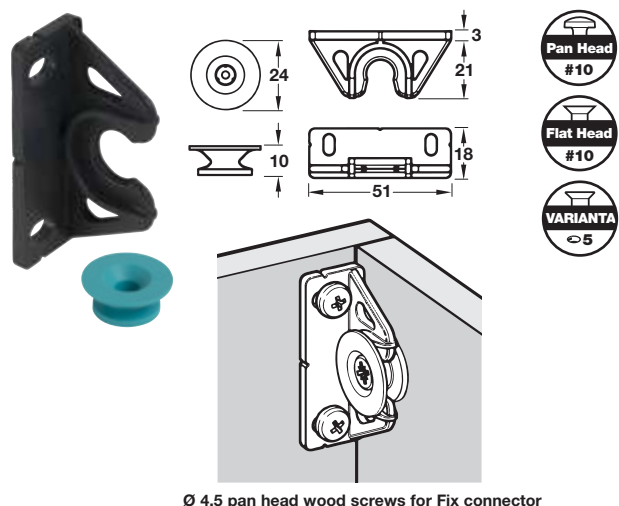


- > For parallel panels
- > Connects parallel panels and is ideal for applications where strength and security are crucial
- > Engage the buttons in the connector and slide the panel down by 15 mm until Button-fix™ goes 'click'
- > When surface mounted an 8 mm gap is created between the two attaching panels
- > Alternatively, you can mortise connector to reduce the gap between the two attaching panels to only 3 mm
- > Screw mounted
- > Material: Plastic

Color	Item No.
black	262.94.000

Note
Button must be ordered separately.

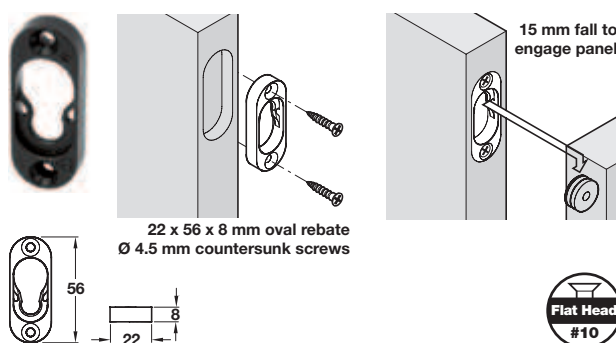
→ Type 2 Fix



- > For 90° panels
- > Connects panels at 90° with a simple push/pull fit; ideal for applications where the emphasis is on ease of fit as opposed to strength
- > Does not require a 15 mm drop down engagement
- > Material: Plastic

Color	Item No.
black	262.94.024

→ Type 1 Flush Fix



- > For parallel panels
- > For applications where panel to panel contact is required and fits a simple oval mortise
- > Can be mortised into the edge of a panel of at least 28 mm thick, in particular hollow core panels or the face of a panel of at least 18 mm thick
- > Allows you to fit panels together with no gap between, when fixing panels at least 18 mm thick (we recommend euro screws for fixing into panels 18–22 mm)
- > Suitable for secret fixing of drawer fronts or connecting work surfaces to carcasses, exhibition stands and peg rails
- > Material: Plastic

Color	Item No.
black	262.94.014

Note
Button must be ordered separately.

Varianta screws	page 12.16
Flat head screws	pages 12.7-12.8, 12.10, 12.13
Pan head screws	pages 12.9-12.10