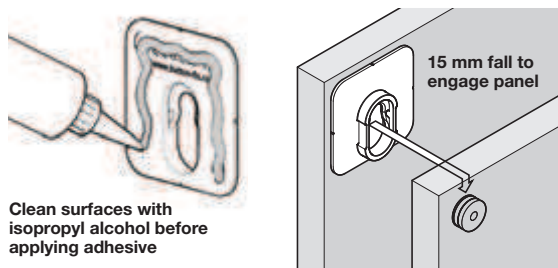
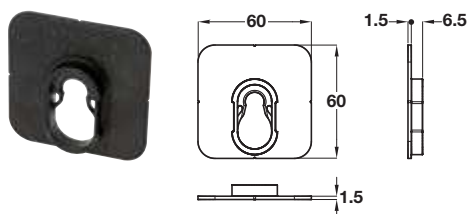


## Button-fix™ Panel Connecting Fittings

### → Type I Bonded Fix



- > For fitting parallel panels where screw mounting is not possible
- > Suitable for decorative wall cladding using solid surface materials, compact laminate sheets less than 12 mm thick, honeycomb core panels, metal panels, glass panels, etc.
- > Button-fix™ Type 1 Bonded Fix may be mortised for added strength
- > Material: Nylon, glass filled

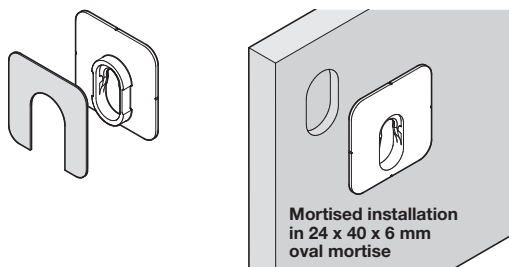
#### Item No.

262.94.012

#### Note

Button and self-adhesive Fix Pad must be ordered separately below.

### → Self-adhesive Fix-pad

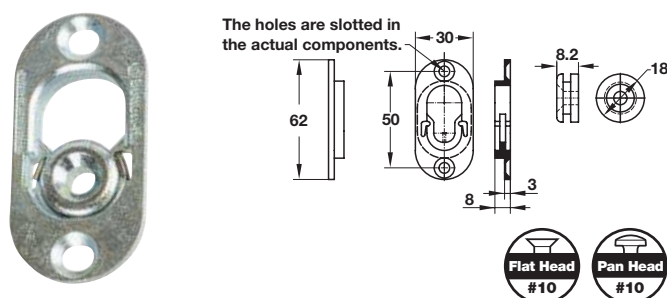


- > For use with Button-fix™ Type 1 Bonded Fix when mortised
- > Ideal when installation time is limited
- > Material: Nylon, glass filled

#### Item No.

262.94.016

### → Type 1 Metal Fix



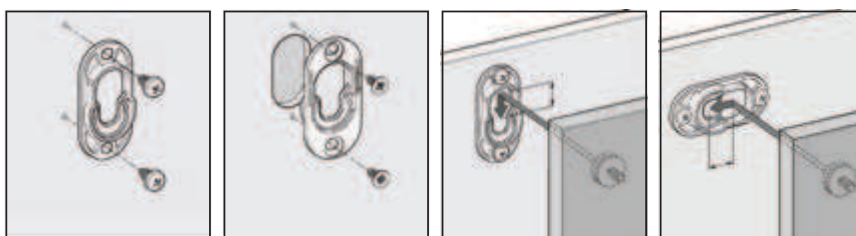
- > Connects parallel panels and is ideal for applications where strength and security are critical
- > Engage the buttons in the connector and slide the panel down by 15 mm until Button-fix goes 'click'
- > When surface mounted an 8 mm gap is created between the two attaching panels
- > Alternatively, you can mortise connector to reduce the gap between the two attaching panels to only 3 mm
- > Screw mounted
- > Ideal for use with fire-retardant materials
- > Material: Zinc

#### Finish

zinc-plated

#### Item No.

262.94.019



Flat head screws pages 12.7-12.8, 12.10, 12.13  
Pan head screws pages 12.9-12.10

Ø5 mm pan head wood screws for surface mounted option

28 x 40 x 6 mm oval rebate  
Ø5 mm CSK wood screws for rebated option

15 mm fall to engage panel...

...or 15 mm slide to engage panel