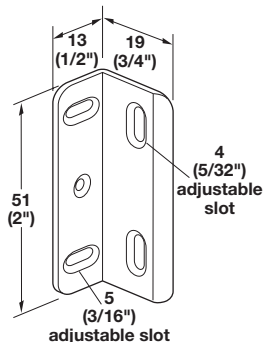


Drawer Front Adjustment Fittings

→ Kolbe Korner



- > 19 x 51 mm
- > Material: Plastic/Polycarbonate

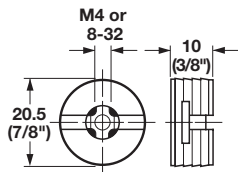
| Color | 50 pack | Bulk |
|-------|------------|------------|
| white | 260.26.760 | 260.26.761 |

- > 19 x 38 mm
- > Material: Steel

| Finish | Bulk |
|--------|------------|
| tan | 260.26.141 |

Bulk Supplied With
500 pcs.

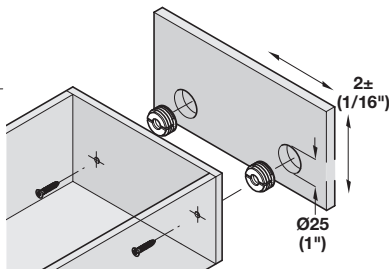
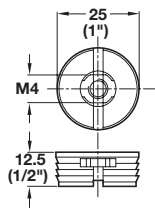
→ Drawer Front Connector



- > Pressed in a 20 mm (3/16'') hole in drawer front
- > Allows for ± 2 mm (1/16'') horizontal or vertical adjustment
- > Material: Plastic; Color: natural

| Version | Item No. |
|---------|------------|
| M4 | 430.90.704 |
| 8-32 | 430.90.713 |

→ Drawer Front Adjuster



- > One part drawer front adjusting fitting fits into a Ø25 mm (1'') hole in the drawer front
- > Only the screw head used to mount and adjust is visible
- > The floating action inside the fitting allows for 2± mm (1/16'') adjustment of the drawer front in two directions
- > Material: Fitting: Plastic; Insert: Steel

| Color | Item No. |
|-------|------------|
| white | 430.90.323 |