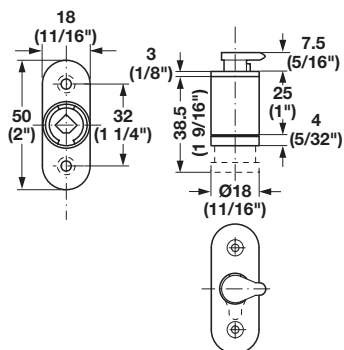


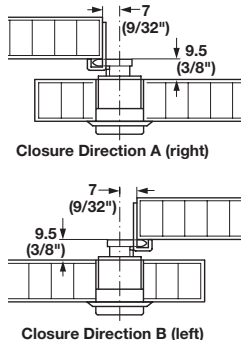
SYMO 3000 Modular Removable Core Locking System

- > For cylinder cores that are inserted from the front on-site
- > Screw mounted

→ Sliding Door Lock



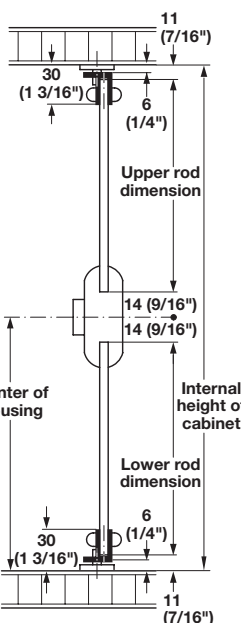
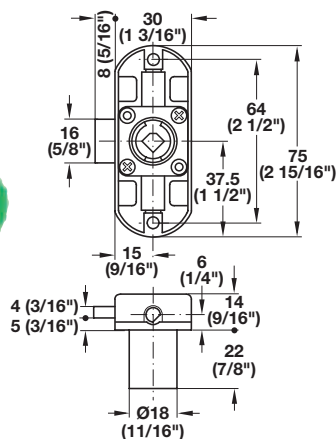
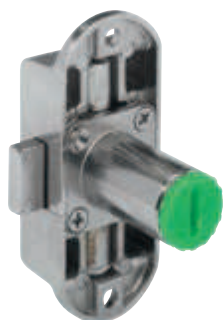
Installation



- > The rotary bolt further protects sliding doors against being pushed in
- > The lock can only be locked and unlocked with the key
- > Closure direction: 180°
- > Material: Zinc Alloy; Finish: nickel-plated

Locking	Item No.
Closure direction A (right)	234.67.610
Closure direction B (left)	234.67.660

→ PICCOLA-NOVA Espagnolette Locks



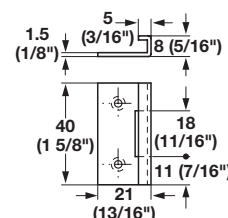
- > For divided profile rod 6 mm (1/4")
- > Material: Zinc Alloy; Finish: nickel-plated

Handing	Item No.
Left	224.64.650
Right	224.64.600

Note

Please consider the following measurements when designing the cabinet and when choosing the accessories for the espagnolette lock:
Upper rod dimension: center of housing – 25 mm (1")
Lower rod dimension: center of housing – 25 mm (1")

→ Angled Striking Plate



- > For SYMO 3000 push and turn lock
- > Material: Steel

Finish	Item No.
zinc-plated	239.01.910

Lock cores	pages 10.24–10.25
Rod guides, locking bolt, top and bottom catch hooks	page 10.35
Profile rod	page 10.35
Accessories	page 10.31