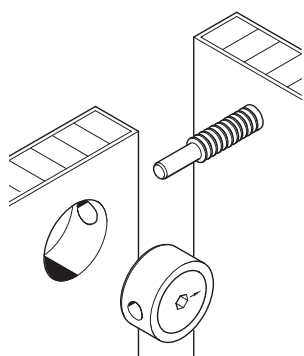


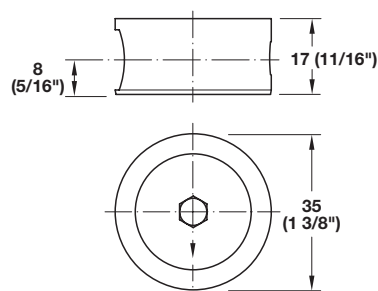
**Confa 35**



**ixconnect**

- > For very sturdy and heavily loaded joints
- > Long travel distance
- > Quickly tightened
- > Can be tightened with 6 mm hex key
- > A cordless drill can be used for quick assembly

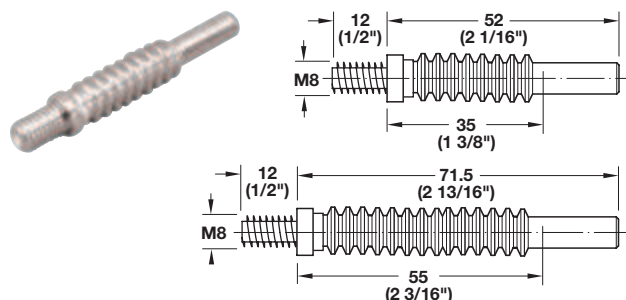
→ **Recessed Universal Connector**



- > Material: Housing: Zinc die-cast
- Tightening element: Steel, unfinished

Wood thickness	Dimension A mounting center	Drilling depth	Item No.
From 24	1/2 wood thickness	1/2 wood thickness + 8	262.69.009

→ **Connecting Bolt**

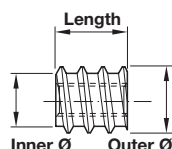


- > With M8 thread
- > Ø:10.5 mm
- > Material: Steel; Finish: zinc-plated

Drilling distance	Item No.
35	262.69.036
55	262.69.045

The connecting bolts on this page can be used with the following parts:

→ **M8 Screw Socket**



- > With screw slot
- > Material: Steel, unfinished

Outer Ø	Inner Ø	Length	Item No.
14	11.5	15	030.00.404
16	12	18	030.00.422

→ **Hex Key**

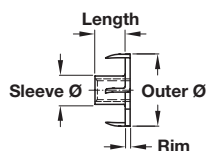


- > 6 mm
- > Material: Steel

Finish	Item No.
zinc-plated	008.28.268

## Multi-Purpose Connectors

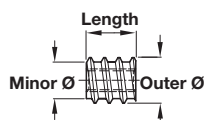
### → T-Nuts



- > Pronged
- > Material: Steel, unfinished

Internal thread	Outer Ø	Sleeve Ø	Rim	Length	Item No.
M4	15	5.5	1	7.5	031.00.249
M6	19	7.5	1.3	8	031.00.267
M8	22.5	10	1.5	9.5	031.00.285
M10	26	11.5	2	11	031.00.301

### → Screw-in Sockets



- > Screwdriver slot
- > Internal thread M4
- > Material: Steel, unfinished

Outer Ø	Minor Ø	Length	Item No.
8	5.5	8	030.00.100

Supplied With  
1000 pcs.

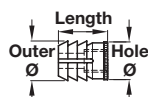
- > Internal thread M6

Outer Ø	Minor Ø	Length	Item No.
10	7	12	030.00.351

Internal thread	Outer Ø	Minor Ø	Length	Item No.
M8	14	11.5	15	030.00.404
M10	18.5	15	15	030.00.502

Supplied With  
100 pcs.

### → Glue-in Sockets



- > Glue grooves
- > Internal thread M4
- > Material: Nylon; Color: natural

Outer Ø	Hole Ø	Length	Item No.
8.5	8	8	039.33.140
8.5	8	10	039.33.042

- > Internal thread M6

Outer Ø	Hole Ø	Length	Item No.
8.5	8	11	039.33.462

- > Internal thread M6

Outer Ø	Hole Ø	Length	Item No.
11	10	11	039.33.266

Supplied With  
5000 pcs.