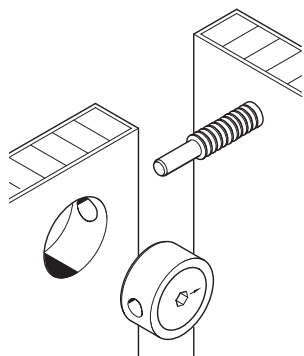


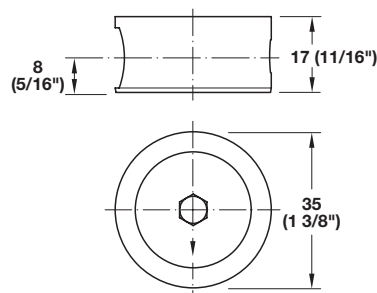
**Confa 35**



**ixconnect**

- > For very sturdy and heavily loaded joints
- > Long travel distance
- > Quickly tightened
- > Can be tightened with 6 mm hex key
- > A cordless drill can be used for quick assembly

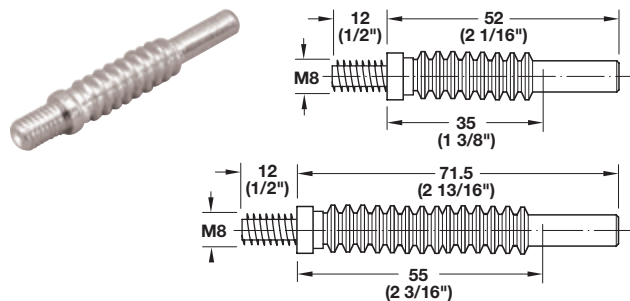
→ **Recessed Universal Connector**



- > Material: Housing: Zinc die-cast  
Tightening element: Steel, unfinished

Wood thickness	Dimension A mounting center	Drilling depth	Item No.
From 24	1/2 wood thickness	1/2 wood thickness + 8	262.69.009

→ **Connecting Bolt**

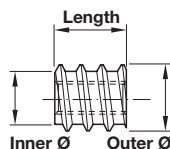


- > With M8 thread
- > Ø:10.5 mm
- > Material: Steel; Finish: zinc-plated

Drilling distance	Item No.
35	262.69.036
55	262.69.045

The connecting bolts on this page can be used with the following parts:

→ **M8 Screw Socket**



- > With screw slot
- > Material: Steel, unfinished

Outer Ø	Inner Ø	Length	Item No.
14	11.5	15	030.00.404
16	12	18	030.00.422

→ **Hex Key**



- > 6 mm
- > Material: Steel

Finish	Item No.
zinc-plated	008.28.260

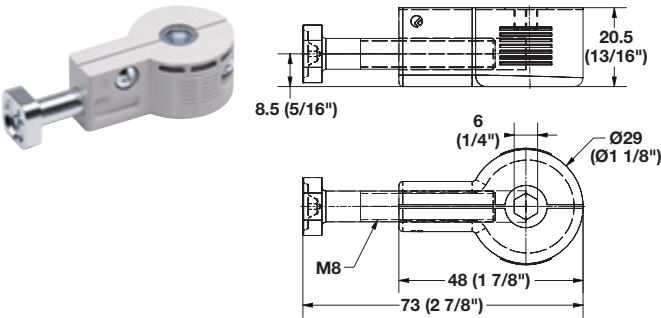
Dimensional data not binding. Dimensions in mm, inches are approximate. We reserve the right to alter specifications without notice.

QUICK Worktop Connector



- > For joining two panel surfaces together
- > Two-part assembly includes bolt with tightening mechanism, mating round cap
- > Minimum material thickness: 25 mm (1")
- > Drilling depth: 21 mm (13/16")

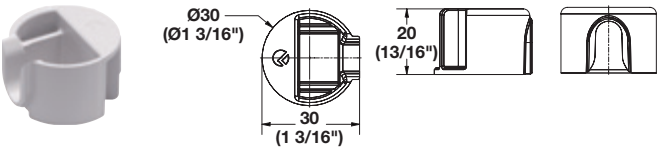
→ QUICK Ø30 Bolt



- > Drilling distance: 26–38 mm
- > Material: Zinc/Steel/Plastic

Item No.  
262.96.250

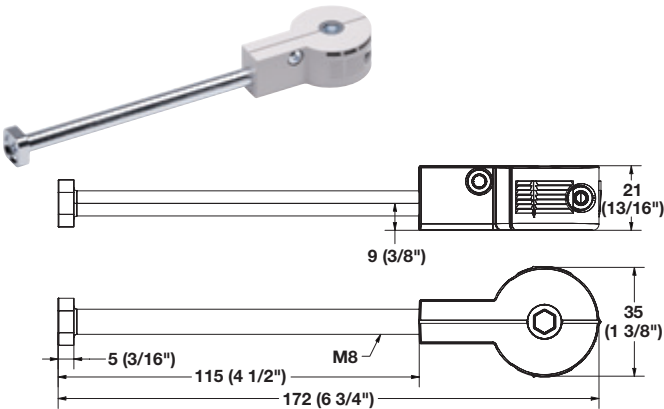
→ QUICK Ø30 Cap



- > Material: Plastic

Item No.  
262.96.238

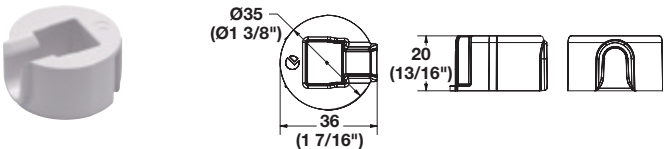
→ QUICK Ø35 Bolt



- > Drilling distance: 75–81 mm
- > Material: Zinc/Steel/Plastic

Item No.  
262.96.231

→ QUICK Ø35 Cap



- > Material: Plastic

Item No.  
262.96.239

→ Hex Key, 6 mm



- > Material: Steel

Finish  
zinc

Item No.  
008.28.260