

CORNER BRACKET FOR FRAMES

FR121

400 OR 100 PER BOX



ESCUTCHEON SET

FR122

To cover 2 1/8" hole under rim panic device.

25, 50 OR 100 PER BOX



WELD-IN CORNER TAB

FR131

- 5/8" x 7/16" (lip) x 1 13/16" (wide).
- For standard 2" face frames.

50, 100 OR 200 PER BOX



WELD-IN CORNER TAB

FR132

- 5/8" x 7/16" (lip) x 3 13/16" (wide).
- For 4" profile frames.

50, 100 OR 200 PER BOX

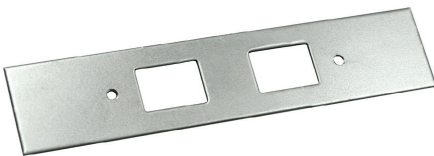


WELD-IN CORNER TAB

FR133

- 1" x 7/16" (lip) x 1 7/8" (wide).
- For standard 2" face jamb or head.

50, 100 OR 200 PER BOX



FLUSH BOLT STRIKE REINFORCEMENT

FR161

- Works in conjunction with FR160 (see page 46).
- 2 Holes - 8-32 Th'd.

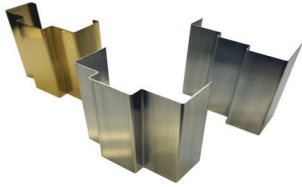
50, 100 OR 200 PER BOX



CASED OPEN SPAT

FR181

- Reinforces bottom of frame.
- Stainless steel, also available in other finishes.
- Spat shown with 1/2" returns.
- Specify jamb depth, height, finish, with or without returns when ordering. (Shown with returns).



FRAME SPAT

FR182

- Reinforces bottom of frame.
- Stainless steel, also available in other finishes.
- Specify jamb depth, height, finish, with or without returns when ordering.



CLOSER REINFORCEMENT

FR270 A

- Strip type (12" x 1 3/4" x 16 GA).
- Other sizes also available, contact us for details.

100 OR 500 PER BOX



CLOSER REINFORCEMENT

FR270 B

- Heavy duty strip type (12" x 1 3/4" x 1/8").
- Other sizes also available, contact us for details.

100 OR 500 PER BOX



CLOSER REINFORCEMENT

FR270 C

- Heavy duty strip type (14" x 1 3/4" x 1/8").
- Other sizes also available, contact us for details.

100 OR 500 PER BOX

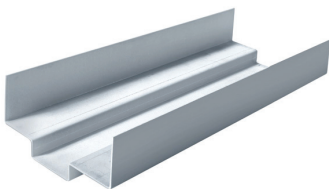


CLOSER REINFORCEMENT

FR270 N

- Heavy duty strip type (14" x 1 1/2" x 10 GA).
- Other sizes also available, contact us for details.

100 OR 750 PER BOX

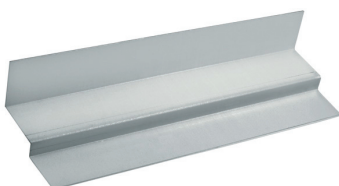


**CLOSER REINFORCEMENT
FULL PROFILE, 14" LONG**

FR272

- Virtually all jamb depths and lengths available.
- Specify jamb depth and equal or unequal rabbet.

40 PER BOX

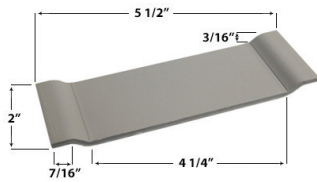


**CLOSER REINFORCEMENT
HALF PROFILE, 14" LONG**

FR273

- Virtually all sizes available.
- Specify rabbet and soffit width and length requirements.
- Contact us for details and pricing.

50 PER BOX



CONCEALED OVERHEAD STOP REINFORCEMENT

FR275



CONCEALED OVERHEAD STOP REINFORCEMENT WITH HOLES

FR275 A



REINFORCING CLIP

- High frequency clip.

FR590



MOUNTING CLIP

- For transom panel.

50 OR 100 PER BOX

FR620



DEAD LOCK STRIKE REINFORCING PLATE

- Specify with welding dimples (WD) or no welding dimples (ND).

50, 100 OR 200 PER BOX

FR621



ASA STRIKE REINFORCING PLATE

- Specify with welding dimples (WD) or no welding dimples (ND).

50, 100 OR 200 PER BOX

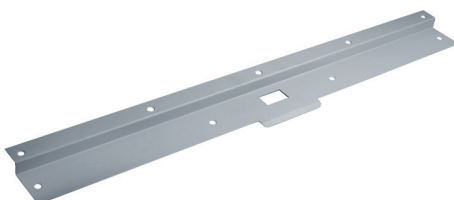
FR623



ASA REINFORCEMENT

- 1 1/4"W x 7 1/8"L
- Specify with welding dimples (WD) or no welding dimples (ND).

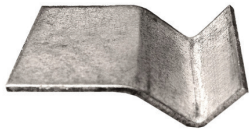
FR627



DOOR JAMB REINFORCEMENT

- May be used to repair damaged frames due to vandalism or fatigue.
- This unit can also be used as an added reinforcement to a wood frame.
- Standard lengths: 24", 36" and 72".
- Available in steel, stainless steel, brass and bronze.

FR692



MORTISE LOCK CENTERING CLIP

DR115

50, 100 OR 400 PER BOX



FLUSH BOLT REINFORCEMENT

DR120

- 2 holes - 8-32 Th'd.
- Specify with welding dimples (WD) or no welding dimples (ND).

50, 100 OR 400 PER BOX

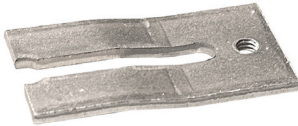


DEADBOLT REINFORCEMENT

DR130

- 1 hole - 8-32 Th'd
- 7/8"W x 2 17/32"L
- Specify with welding dimples (WD) or no welding dimples (ND).

50, 100 OR 400 PER BOX



DEADBOLT REINFORCEMENT

DR130 A

- 1 hole - 8-32 Th'd.
- 7/8"W x 1 3/4"L
- With notch for center seam door.
- Specify with welding dimples (WD) or no welding dimples (ND).

50, 100 OR 400 PER BOX

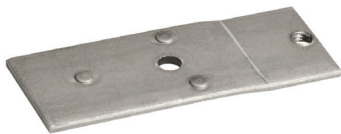


ASA STRIKE REINFORCEMENT

DR130 C

- 1 hole - 12-24 Th'd.
- 7/8"W x 2 17/32"L
- Specify with welding dimples (WD) or no welding dimples (ND).

50, 100, 200 OR 400 PER BOX



DEADBOLT REINFORCEMENT

DR130 D

- 1 hole - 8-32 Th'd.
- 1 1/4"W x 3 1/4"L
- Specify with welding dimples (WD) or no welding dimples (ND).

50, 100, 200 OR 400 PER BOX



ASA STRIKE REINFORCEMENT

DR130 E

- 1 hole - 12-24 Th'd.
- 1 1/4"W x 3 1/4"L
- Specify with welding dimples (WD) or no welding dimples (ND).

50, 100, 200 OR 400 PER BOX



DEADBOLT REINFORCEMENT FLAT

FR130 PW

- 1 hole - 8-32 Th'd.
- 1 1/4"W x 3 1/4"L
- Specify with welding dimples (WD) or no welding dimples (ND).

50, 100, 200 OR 400 PER BOX



ASA STRIKE REINFORCEMENT FLAT

FR130 CPW

- 1 hole - 12-24 Th'd.
- 1 1/4"W x 3 1/4"L
- Specify with welding dimples (WD) or no welding dimples (ND).

50, 100, 200 OR 400 PER BOX



MORTISE LOCK REINFORCEMENT

DR140

- 1 hole - 12-24 Th'd.
- Specify with welding dimples (WD) or no welding dimples (ND).

50, 100, 200 OR 400 PER BOX

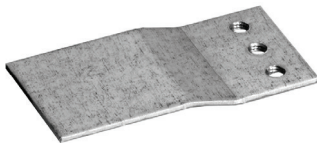


MORTISE LOCK REINFORCEMENT

DR140 A

- 1 hole - 12-24 Th'd.
- With notch for center seam door.
- Holes for riveting.
- Specify with welding dimples (WD) or no welding dimples (ND).

50, 100, 200 OR 400 PER BOX



POWER TRANSFER REINFORCEMENT

DR142

- 3 holes - 10-24 or 10-32 Th'd.
- 1 1/4"W x 2 1/2"L, 14 GA. with 1/8" offset.
- Other offset available, specify when ordering.
- Specify thread when ordering.

50, 100, 200 OR 400 PER BOX



ESCUTCHEON SET

DR150

To cover 2 1/8" 161 hole.



ESCUTCHEON SET

DR152

To cover 1 1/2" deadbolt hole.



LOCK PUNCHOUT (FOR 161 LOCK)

DR160

2 1/8" Dia.



DEADBOLT PUNCHOUT (FOR DEADBOLT)

DR161

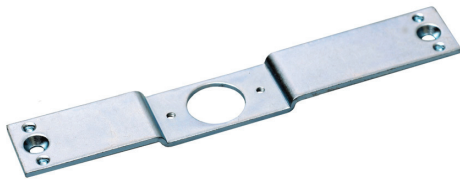
1 1/2" Dia.



DEADBOLT PUNCHOUT (FOR DEADBOLT)

DR161 A

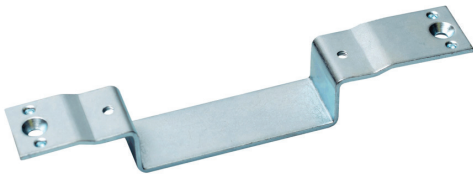
2 1/8" Dia.



CONVERSION FILLER PLATE

DR180

- Converts 86 edge to 161 latch edge.
- 10, 25, 50 OR 100 PER BOX**



CONVERSION FILLER PLATE

DR190

- Converts 86 edge to ASA strike reinforcement.
- 10, 25, 100 OR 150 PER BOX**



FLUSH BOLT DOOR GUIDE

DR200

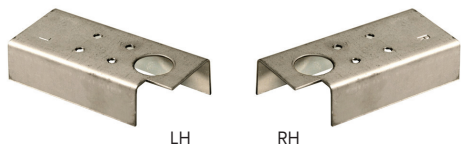
50, 100 OR 400 PER BOX



FLUSH BOLT DOOR GUIDE

DR201

- Reversible.
 - 4 holes - 8-32 Th'd.
- 100, 300 OR 400 PER BOX**

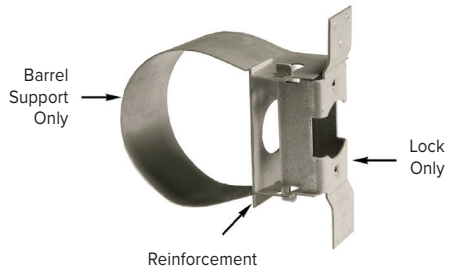


LH/RH FLUSH BOLT DOOR GUIDE

DR201 H

- Handed.
- 4 holes - 8-32 Th'd.
- Formerly BT48.
- Specify handing when ordering.

100 OR 200 PER BOX



CYLINDRICAL LOCK REINFORCING UNIT

DR210

- Comes with barrel support, lock and reinforcement.
- Components may be ordered separately.
- Specify parts when ordering.

LOCK ONLY: 50, 100, 300 OR 800 PER BOX
BARREL SUPPORT ONLY: 150 OR 1000 PER BOX
REINFORCEMENT ONLY: 50, 100, 300 OR 800 PER BOX



MORTISE LOCK FILLER PLATE

DR350

- Works in conjunction with the 86 edge filler.
- 1 1/4" x 8"

50 OR 100 PER BOX



SUPPORT CLIP

DR346

- For Vision Lite glass kits.
- Reinforces cut out in door when installing lite kits.



You Need it... WHEN?

When deadlines are looming and you need parts fast, our huge inventory of ready to ship products helps you turn down time in to **ON TIME!**