

# “HUSKY” CONCEALED OVERHEAD CLOSER INSTALLATION & ADJUSTMENTS NEW INSTALLATIONS

**NOTE: FOR REPLACEMENT  
INSTRUCTIONS SEE NEXT PAGE.**

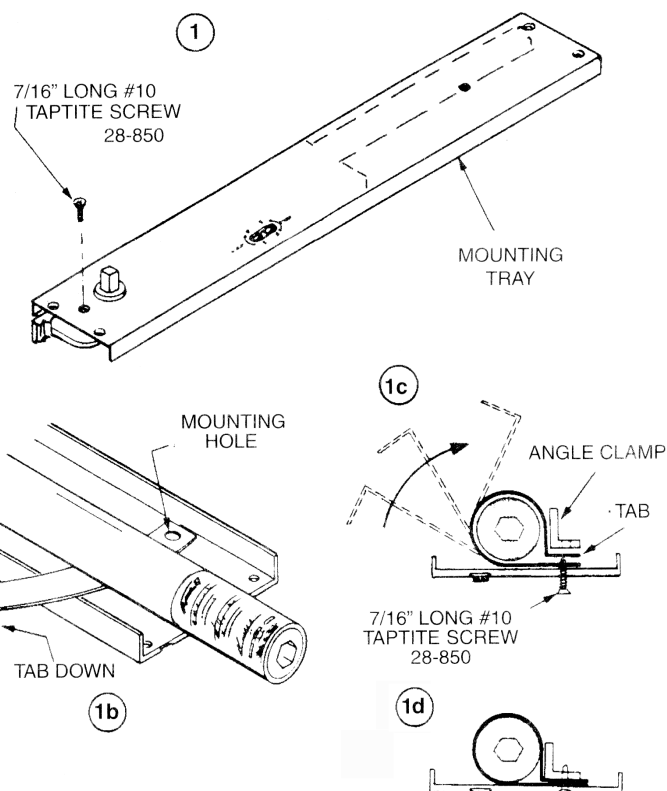
## 1. Installing Closer in Mounting Tray

Place closer on sawhorse or Truck bed with pivot shaft up.

- a. Position mounting tray on closer as shown in illustration, making sure hole in tray fits properly around shaft bearing. Attach mounting tray to closer using #28-850 screws in hole nearest pivot shaft.

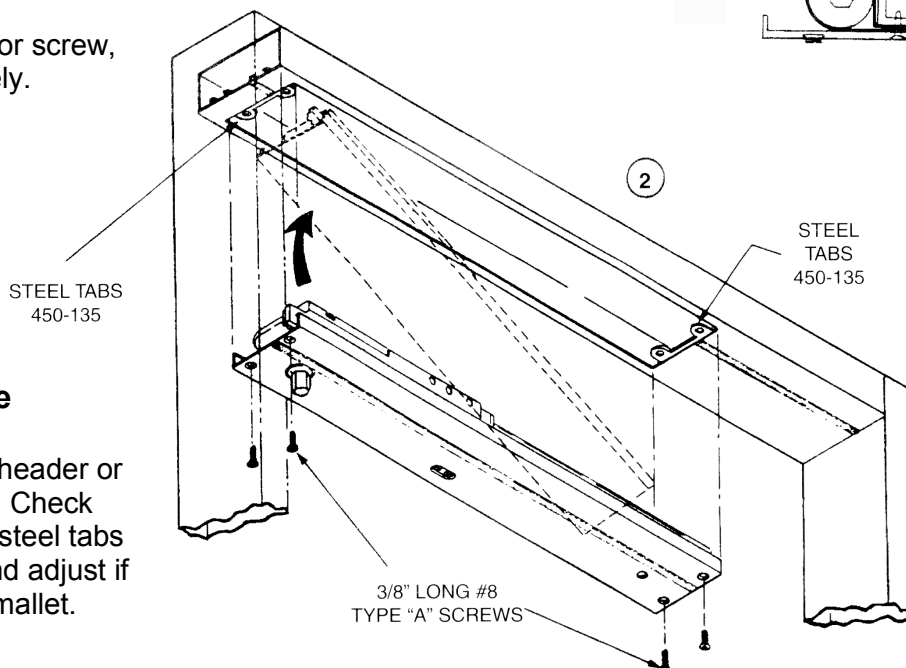
**DO NOT DRILL CLOSER**

- b. Slip galvanized steel retainer strap under closer stack tube with tab down, as shown, and line-up with mounting hole in tray.
- c. Insert anchor screw through mounting plate and leg of strap. Fold remaining portion of strap around stack tube and place tab over anchor screw.
- d. Place angle clamp over anchor screw, as shown, and tighten securely.



## 2. Installing Closer in Frame

Insert closer into cut-out in header or transom bar, rack end first. Check position of factory installed steel tabs for screw hole alignment and adjust if necessary by tapping with mallet.



# "HUSKY" CONCEALED OVERHEAD CLOSER REPLACEMENT INSTRUCTIONS ALL (OLD STYLE FRAMES)

## IMPORTANT INFORMATION

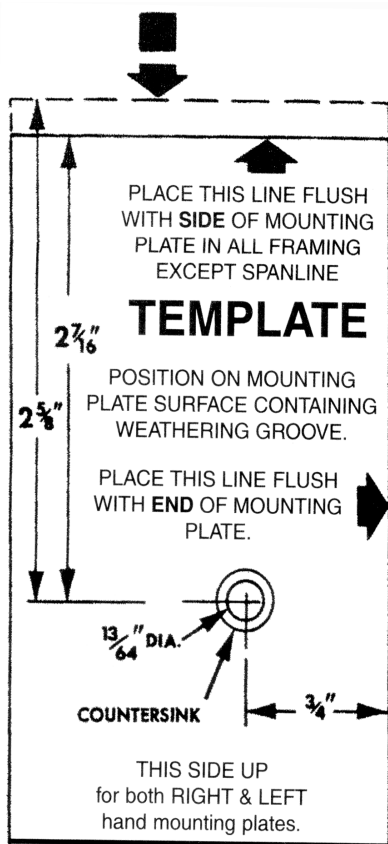
The mounting method used for the Husky concealed in old style frames is somewhat different than that used for the M-2 concealed closer. When replacing an M-2 with a Husky, modification of the plate and installation of the mounting retainer strap will be required. Please follow these instructions closely.

### DO NOT DRILL CLOSER

#### 1. Modification of Mounting Plate

- File two notches in mounting plate adjusting slot provide access to adjusting screws. Notches are **always away** from two mounting screw holes. See illustration 1.
- Drill  $\frac{13}{16}$ " diameter hole in end of mounting plate opposite closer shaft hole, and countersink for #10 screw. Use template below for proper hole location. (**Note: template is always placed on mounting plate surface containing weathering**)

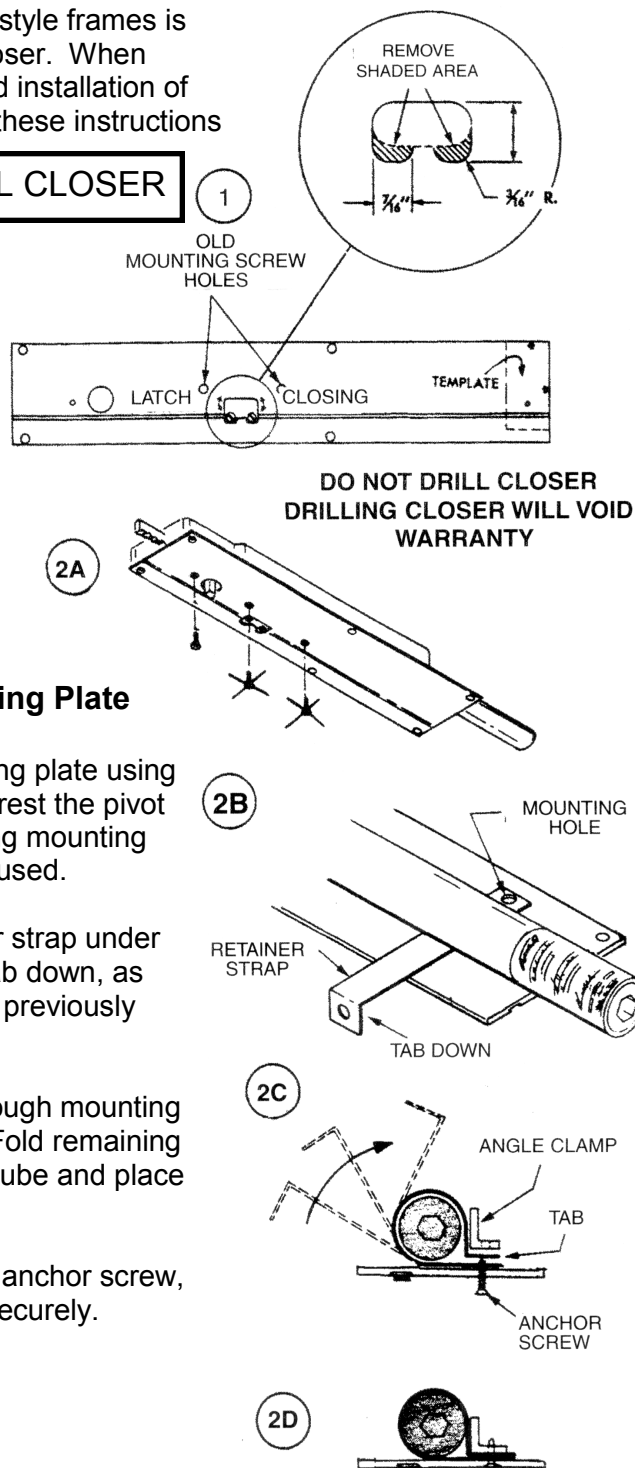
PLACE THIS LINE FLUSH WITH  
SIDE OF MOUNTING PLATE IN  
EXISTING SPANLINE FRAMING.



#### 2. Modification of Mounting Plate

- Fasten closer to mounting plate using only the screw hole nearest the pivot shaft. The two remaining mounting screw holes will **not** be used.
- Slip spring steel retainer strap under closer stack tube with tab down, as shown, and line-up with previously drilled mounting hole.
- Insert anchor screw through mounting plate and leg of strap. Fold remaining portion of strap around tube and place tab over anchor screw.
- Place angle clamp over anchor screw, as shown, and tighten securely.

#### 3. Install Closer Frame

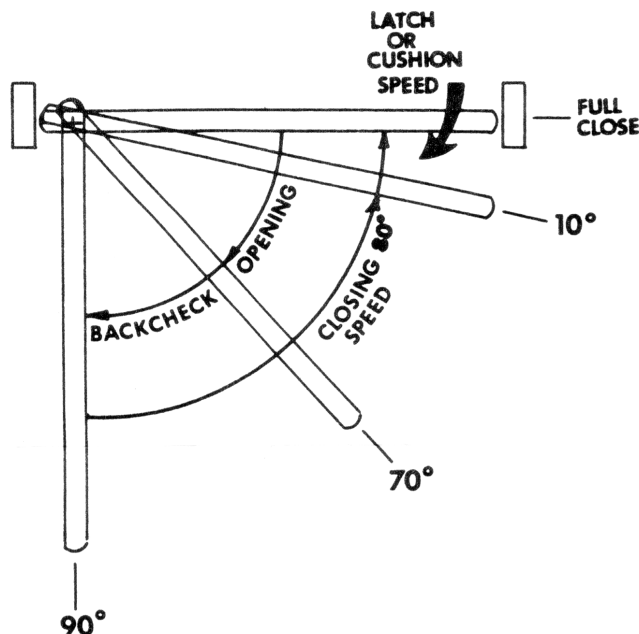


# THE HUSKY CONCEALED OVERHEAD CLOSER

The Husky concealed closer has two-speed closing control to prevent the door from slamming against the stop on single acting applications, and to prevent over-swing on double acting applications. Through the first 80 degrees of the closing cycle, the door should be kept at a moderate speed to prevent "heel bumping" as someone enters through an out-swing door. The last 10 degrees of the closing cycle are the latching or cushion control and should be set as follows.

1. Further reduce the closer speed bringing the door to a soft firm close.
2. Increasing the closing speed to assure positive engagement of latch locks or panic devices.

The complete closing cycle, from 90 degrees open to full closed should take approximately 4 to 8 seconds. If adjustments are required, proceed as follows.



## Closing Speed Adjustment

Turn latching speed valve counter-clockwise to increase door closing speed, or clockwise to reduce door closing speed.

## Latching Speed

Turn latching speed valve counter-clockwise to increase door latching speed or clockwise to reduce door latching speed.



**Note:** Adjusting closing and latching speeds for one direction of door operation automatically set for both directions

## Spring Power Adjustment

The spring power of the Husky closer is not adjustable. We recommend that if more power is required, the next size closer should be used.

## Nullifying Hold Open Feature

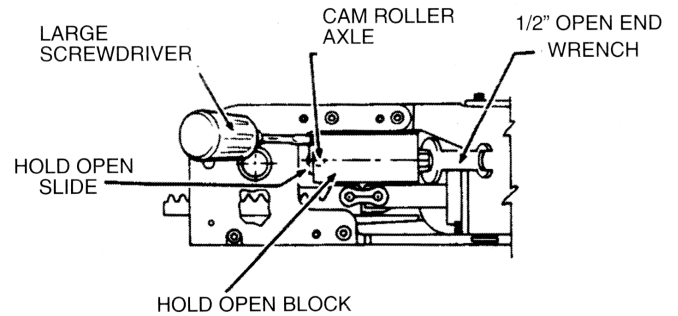
(See Instructions)

DOOR SIZE	MAXIMUM DOOR WEIGHT	SPRING TENSION	TYPE	MODEL NUMBER
30" & under	155 lbs.	Light (Size 3)	105° no hold open	37-624
			90° hold-open	37-625
			105° hold open	37-626
Up to 41" (up to 1,040mm)	243 lbs. (110 Kgs)	Medium (Size 4)	105° no hold open	37-627
			90° hold-open	37-628
			105° hold open	37-629
Up to 48" (up to 1,220mm)	375 lbs. (170 Kgs)	Heavy (Size 5)	105° no hold open	37-630
			90° hold-open	37-631
			105° hold open	37-632

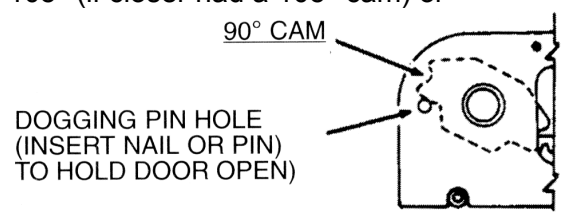
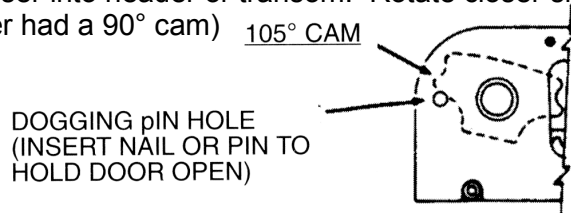
## NULLIFYING HOLD OPEN FEATURE (ON EXISTING INSTALLATION)

1. Remove closer from header/transom bar. Place closer pivot side down on working surface.  
DO NOT remove hold open block because it is also used as a guide for the rack.

2. Rotate shaft out of hold open.
3. Use a large flat blade screwdriver (see illustration) as a wedge to keep the hold open slide from turning.
4. While holding open slide with screwdriver, tighten the hold open nut with a 1/2" open wrench until cam roller axle is completely inside of hold open block. Hold open is now nullified.



5. a. Mount closer into header or transom. Rotate closer shaft 105° (if closer had a 105° cam) or 120° (if closer had a 90° cam)



- b. For door installation, insert a suitable 5/32" diameter hard pin or nail through 3/16" hole in closer base plate. The pin should be inserted at least 1-1/2" into the closer.

CAUTION: Be sure to remove pin before trying to operate closer. To remove pin, open closer from dogged position to remove spring force from pin. Remove pin and release door.