

B — W

# GHOSTOP GS200 Zero-Clearance Jamb/Door Stop

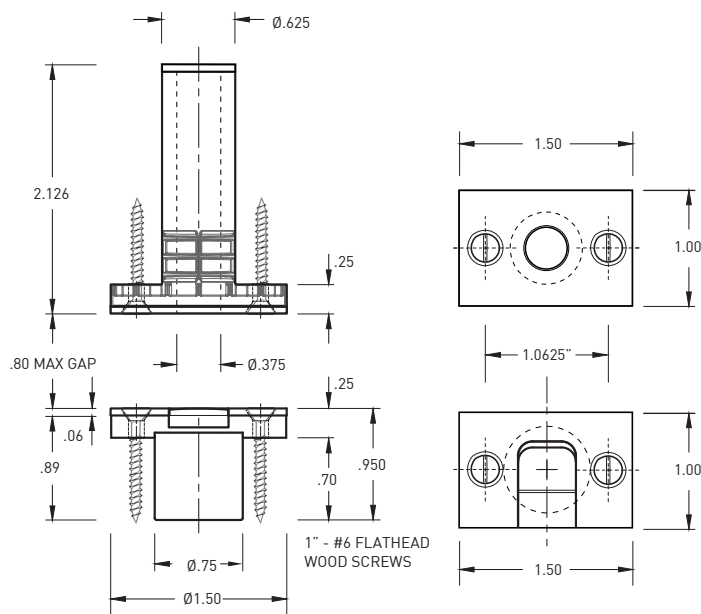
GHOSTOP  
by Virtual Hardware

FOR PRODUCT SPECIFICATION & SUPPORT : 1-800-362-1484 BRIDGEPORTWORLDWIDE.COM SALES@BRIDGEPORTWORLDWIDE.COM

PATENT PENDING



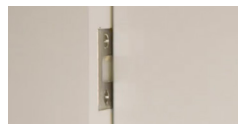
STRONG  
MAGNET  
WARNING!



## FEATURES:

The Ghostop **GS200** provides a positive stop in side or head jambs for lighter swing and pivot doors, where visual alignment with a straight surface is preferred. The ramp integrated in the strike makes for smooth opening of closets, cabinets, and doors. Note, GS200 does not provide a positive latch, but a minimal magnetic hold.

- maximum door undercut/jamb gap: **.80"**
- spring-loaded **high-density Delrin®** pin
- delrin pin assembly
- rectangular strike in stainless steel or brass
- proprietary graduated recess (the ramp)
- concealed neodymium magnet
- decorative wood screws finished to match
- maintenance-free



## STANDARD FINISHES:

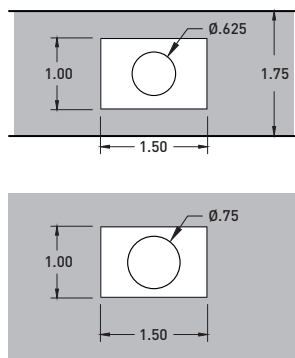
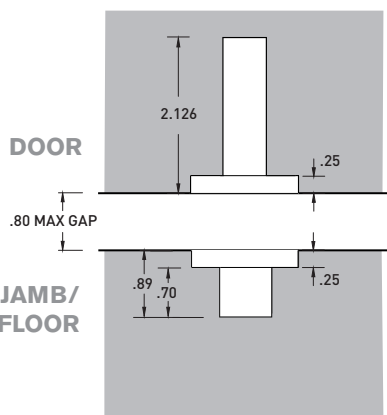
	<b>GHSTP-200-SSS-W</b>	satin stainless steel with white Delrin® ramp strike
	<b>GHSTP-200-DBZ-B</b>	dark bronze with black Delrin® ramp strike
	<b>GHSTP-200-PCH-W</b>	polished chrome, plated with white Delrin® ramp strike
	<b>GHSTP-200-SNL-W</b>	satin nickel, plated with white Delrin® ramp strike
	<b>GHSTP-200-PNL-W</b>	polished nickel, plated with white Delrin® ramp strike
	<b>GHSTP-200-PBU-W</b>	polished brass - unlacquered with white Delrin® ramp strike
	<b>GHSTP-200-SBU-W</b>	satin brass - unlacquered with white Delrin® ramp strike
	<b>GHSTP-200-BLK-B</b>	matte black with black Delrin® ramp strike
	<b>GHSTP-200-WHT-W</b>	matte white with white Delrin® ramp strike

**EXTRA STRIKE SETS**, to create positive stops in both open and closed positions, include the rectangular strike coverplate, the delrin strike w/ramp and fasteners. These can be ordered using product code: **GHSTP-200-ST-XXX-X**

## INSTALLATION :

- Install Pin Assembly along bottom of door at desired location.
- Pin Assembly bore must be thoroughly cleaned to ensure proper operation.
- Install rectangular Strike Plate in jamb, or other surface, centered with Pin Assembly.
- Align the strike plate ramp with the pin assembly for your door swing prior to fixing the coverplate screws.

## preparation



B — W

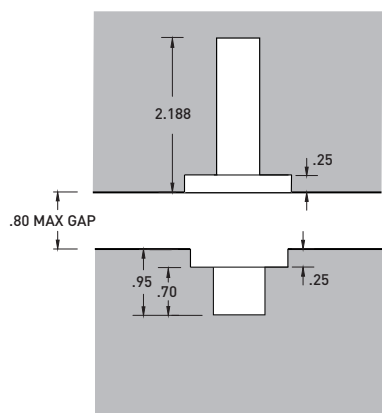
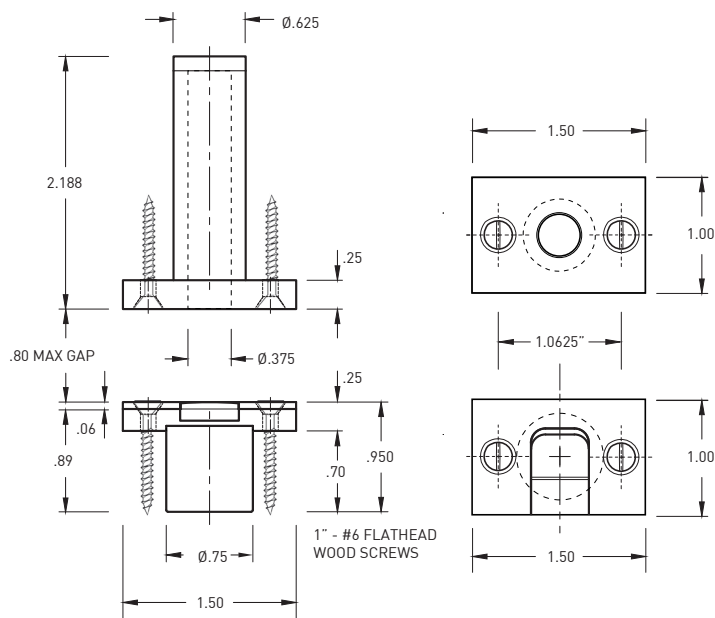
# GHOSTOP GS200XD

Heavy-Duty Zero-Clearance Jamb/Door Stop

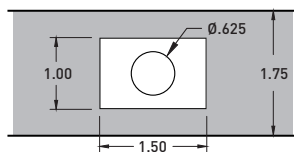
GHOSTOP  
by Virtual Hardware

FOR PRODUCT SPECIFICATION & SUPPORT : 1-800-362-1484 BRIDGEPORTWORLDWIDE.COM SALES@BRIDGEPORTWORLDWIDE.COM

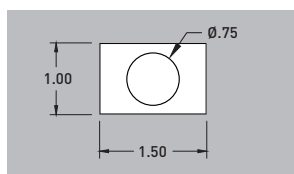
PATENT PENDING  **STRONG  
MAGNET  
WARNING!**



preparation



DOOR

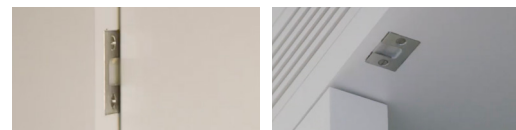


JAMB/  
FLOOR

## FEATURES:

The Ghostop **GS200XD** provides a positive stop in side or head jambs for heavier swing and pivot doors, where visual alignment with a straight surface is preferred. The ramp integrated in the strike makes for the smooth opening of larger doors, closets, and cabinets. Note, GS200XD does not provide a positive latch, but a minimal magnetic hold.

- maximum door/jamb gap: **.80"**
- spring-loaded retracting **stainless steel pin**
- solid milled brass pin assembly
- rectangular strike in stainless steel or brass
- proprietary graduated recess (the ramp)
- concealed neodymium magnet
- decorative wood screws finished to match
- maintenance-free



## STANDARD FINISHES :

	<b>GS200XD-SSS-W</b>	satin stainless steel with white Delrin® strike disc
	<b>GS200XD-DBZ-B</b>	dark bronze with black Delrin® strike disc
	<b>GS200XD-PCH-W</b>	polished chrome, plated with white Delrin® strike disc
	<b>GS200XD-SNL-W</b>	satin nickel, plated with black Delrin® strike disc
	<b>GS200XD-PNL-W</b>	polished nickel, plated with white Delrin® strike disc
	<b>GS200XD-PBU-W</b>	polished brass - unlacquered with white Delrin® strike disc
	<b>GS200XD-SBU-W</b>	satin brass - unlacquered with white Delrin® strike disc
	<b>GS200XD-BLK-B</b>	matte black with black Delrin® strike disc
	<b>GS200XD-WHT-W</b>	matte white with white Delrin® strike disc

**EXTRA STRIKE SETS**, to create positive stops in both open and closed positions, include the rectangular strike coverplate, the delrin strike w/ramp, magnet, and fasteners. These can be ordered using product code: **GS200-SP-XXX-X**

## INSTALLATION :

- Install Pin Assembly along bottom of door at desired location.
- Pin Assembly bore must be thoroughly cleaned to ensure proper operation.
- Install rectangular Strike Plate in jamb, or other surface, centered with Pin Assembly.
- Align the strike plate ramp with the pin assembly on the door swing prior to fixing the coverplate screws.

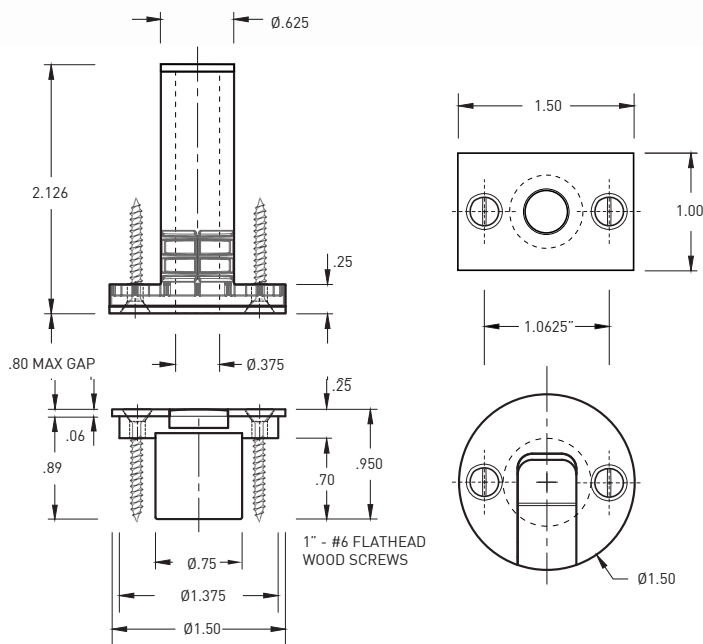
B — W

# GHOSTOP GS300 Zero-Clearance Door Stop

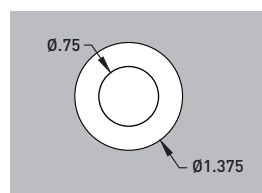
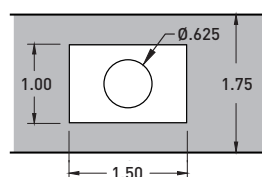
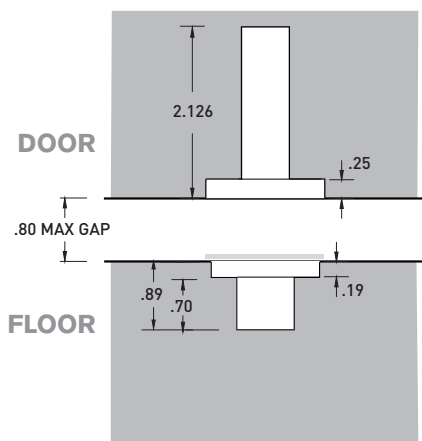
GHOSTOP  
by Virtual Hardware

FOR PRODUCT SPECIFICATION & SUPPORT : 1-800-362-1484 BRIDGEPORTWORLDWIDE.COM SALES@BRIDGEPORTWORLDWIDE.COM

PATENT PENDING



preparation



## FEATURES:

The Ghostop **GS300** provides a flush-to-the-floor door stop for lighter swing and pivot doors on any floor surface with no clearance required. For larger and heavier doors consider specifying GS300XD. Note, GS300 does not provide a positive latch, but a minimal magnetic hold.

- Zero Clearance Solution, no trip hazard
- spring-loaded retracting **Delrin®** pin
- maximum door undercut: **.80"**
- delrin door assembly and strike
- round strike plate in stainless steel or brass
- proprietary graduated recess (the ramp)
- concealed neodymium magnet
- decorative wood screws finished to match
- maintenance-free



## STANDARD FINISHES :

	<b>GHSTP-300-SSS-W</b>	satin stainless steel with white Delrin® ramp strike
	<b>GHSTP-300-DBZ-B</b>	dark bronze with black Delrin® ramp strike
	<b>GHSTP-300-PCH-W</b>	polished chrome, plated with white Delrin® ramp strike
	<b>GHSTP-300-SNL-W</b>	satin nickel, plated with white Delrin® ramp strike
	<b>GHSTP-300-PNL-W</b>	polished nickel, plated with white Delrin® ramp strike
	<b>GHSTP-300-PBU-W</b>	polished brass - unlacquered with white Delrin® ramp strike
	<b>GHSTP-300-SBU-W</b>	satin brass - unlacquered with white Delrin® ramp strike
	<b>GHSTP-300-BLK-B</b>	matte black with black Delrin® ramp strike
	<b>GHSTP-300-WHT-W</b>	matte white with white Delrin® ramp strike

**EXTRA STRIKE SETS**, to create positive stops in both open and closed positions, include the circular strike coverplate, the delrin strike w/ramp, magnet, and fasteners. These can be ordered using product code: **GHSTP-300-ST-XXX-X**

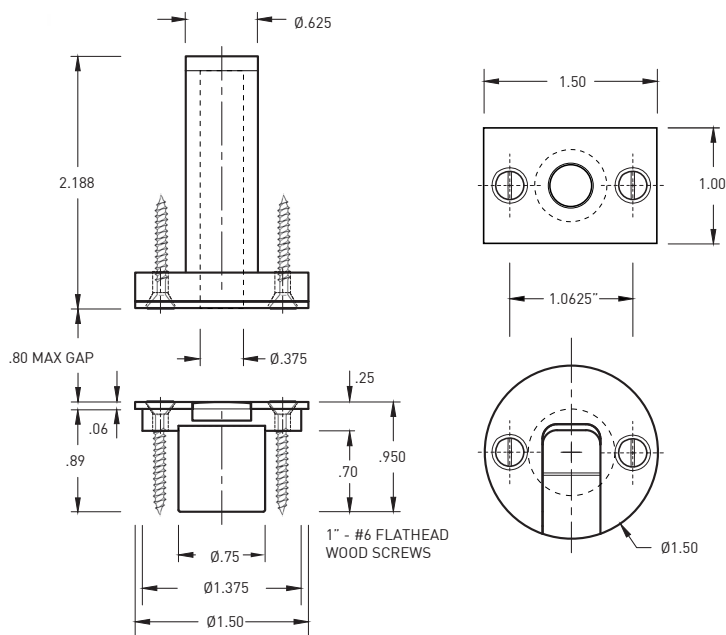
## INSTALLATION :

- Install Pin Assembly along bottom of door at desired location.
- Pin Assembly bore must be thoroughly cleaned to ensure proper operation.
- Install round Strike Plate in floor, or ceiling, centered with Pin Assembly.
- Align the strike plate ramp with the pin assembly for your door swing prior to fixing the coverplate screws.

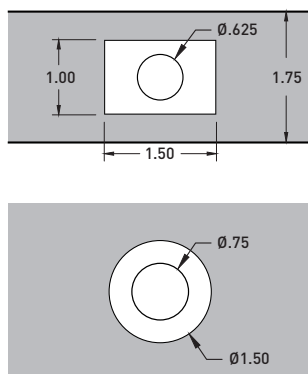
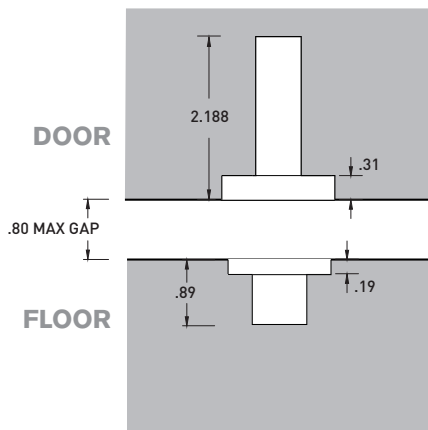
PATENT PENDING



**STRONG  
MAGNET  
WARNING!**



preparation



## FEATURES:

The Ghostop **GS300XD** was developed to provide a flush-to-the floor door stop for heavier doors on any surface zero clearance required. The GS300XD doorstop features a solid stainless steel pin. Note, GS300XD does not provide a positive latch, but offers a minimal magnetic hold.

- Zero Clearance Solution, no trip hazard
- spring-loaded retracting **stainless steel pin**
- maximum door undercut: **.80"**
- solid milled brass pin assembly
- round strike plate in stainless steel or brass
- proprietary graduated recess (the ramp)
- concealed neodymium magnet
- decorative wood screws finished to match
- maintenance-free



## STANDARD SET FINISHES :

	<b>GHSTP-300XD-SSS-W</b>	satin stainless steel with white Delrin® ramp strike
	<b>GHSTP-300XD-DBZ-B</b>	dark bronze with black Delrin® ramp strike
	<b>GHSTP-300XD-PCH-W</b>	polished chrome, plated with white Delrin® ramp strike
	<b>GHSTP-300XD-SNL-W</b>	satin nickel, plated with white Delrin® ramp strike
	<b>GHSTP-300XD-PNL-W</b>	polished nickel, plated with white Delrin® ramp strike
	<b>GHSTP-300XD-PBU-W</b>	polished brass - unlacquered with white Delrin® ramp strike
	<b>GHSTP-300XD-SBU-W</b>	satin brass - unlacquered with white Delrin® ramp strike
	<b>GHSTP-300XD-BLK-B</b>	matte black with black Delrin® ramp strike
	<b>GHSTP-300XD-WHT-W</b>	matte white with white Delrin® ramp strike

**EXTRA STRIKE SETS**, to create positive stops in both open and closed positions, include the circular strike coverplate, the delrin strike w/ramp, magnet, and fasteners. These can be ordered using product code: **GHSTP-300-ST-XXX-X**

## INSTALLATION :

- Install Pin Assembly along bottom of door at desired location.
- Pin Assembly bore must be thoroughly cleaned to ensure proper operation.
- Install round Strike Plate in floor, or ceiling, centered with Pin Assembly.
- Align the strike plate ramp with the pin assembly for your door swing prior to fixing the coverplate screws.

B — W

# GHOSTOP GS300XL

Zero-Clearance Door Stop with 1-1/4" Throw

GHOSTOP  
by Virtual Hardware

FOR PRODUCT SPECIFICATION & SUPPORT : 1-800-362-1484

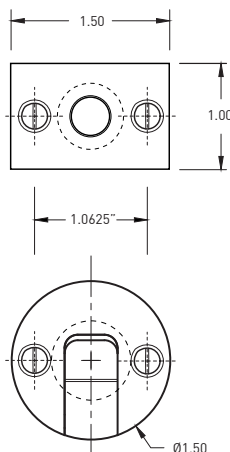
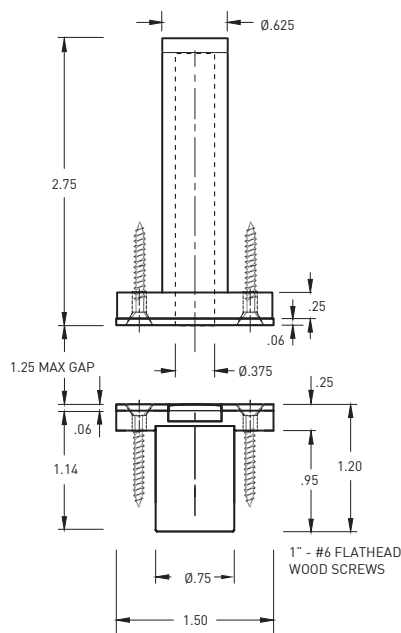
BRIDGEPORTWORLDWIDE.COM

SALES@BRIDGEPORTWORLDWIDE.COM

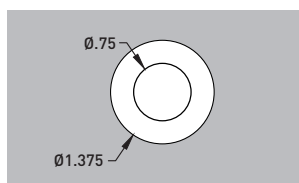
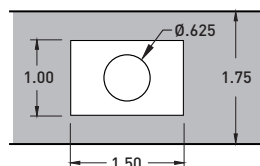
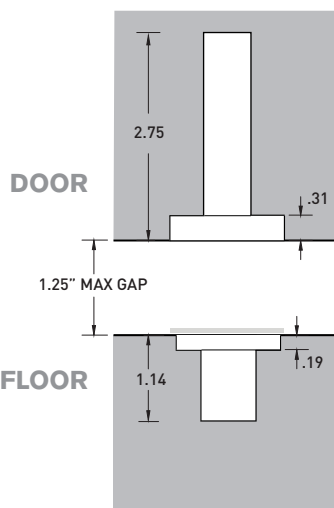
PATENT PENDING



**STRONG  
MAGNET  
WARNING!**



preparation



## FEATURES:

The Ghostop **GS300XL** was developed to provide a flush-to-the floor door stop for heavier doors with a greater undercut (up to 1.25"). The larger magnet (75lbs of force) launches the solid stainless steel pin. Note, GS300XL does not provide a positive latch, but offers a minimal magnetic hold.

- Zero Clearance Solution, no trip hazard
- spring-loaded retracting **stainless steel pin**
- maximum door undercut: **1.25"**
- solid milled brass pin assembly
- round strike plate in stainless steel or brass
- proprietary graduated recess (the ramp)
- concealed neodymium magnet
- decorative wood screws finished to match
- maintenance-free



## STANDARD FINISHES:

	<b>GHSTP-300XL-SSS-W</b>	satin stainless steel with white Delrin® ramp strike
	<b>GHSTP-300XL-DBZ-B</b>	dark bronze with black Delrin® ramp strike
	<b>GHSTP-300XL-PCH-W</b>	polished chrome, plated with white Delrin® ramp strike
	<b>GHSTP-300XL-SNL-W</b>	satin nickel, plated with white Delrin® ramp strike
	<b>GHSTP-300XL-PNL-W</b>	polished nickel, plated with white Delrin® ramp strike
	<b>GHSTP-300XL-PBU-W</b>	polished brass - unlacquered with white Delrin® ramp strike
	<b>GHSTP-300XL-SBU-W</b>	satin brass - unlacquered with white Delrin® ramp strike
	<b>GHSTP-300XL-BLK-B</b>	matte black with black Delrin® ramp strike
	<b>GHSTP-300XL-WHT-W</b>	matte white with white Delrin® ramp strike

**EXTRA STRIKE SETS**, to create positive stops in both open and closed positions, include the circular strike coverplate, the delrin strike w/ramp, larger magnet, and fasteners. These can be ordered using product code: **GHSTP-300XL-ST-XXX-X**

## INSTALLATION :

- Install Pin Assembly along bottom of door at desired location.
- Pin Assembly bore must be thoroughly cleaned to ensure proper operation.
- Install round Strike Plate in floor, or ceiling, centered with Pin Assembly.
- Align the strike plate ramp with the pin assembly for your door swing prior to fixing the coverplate screws.