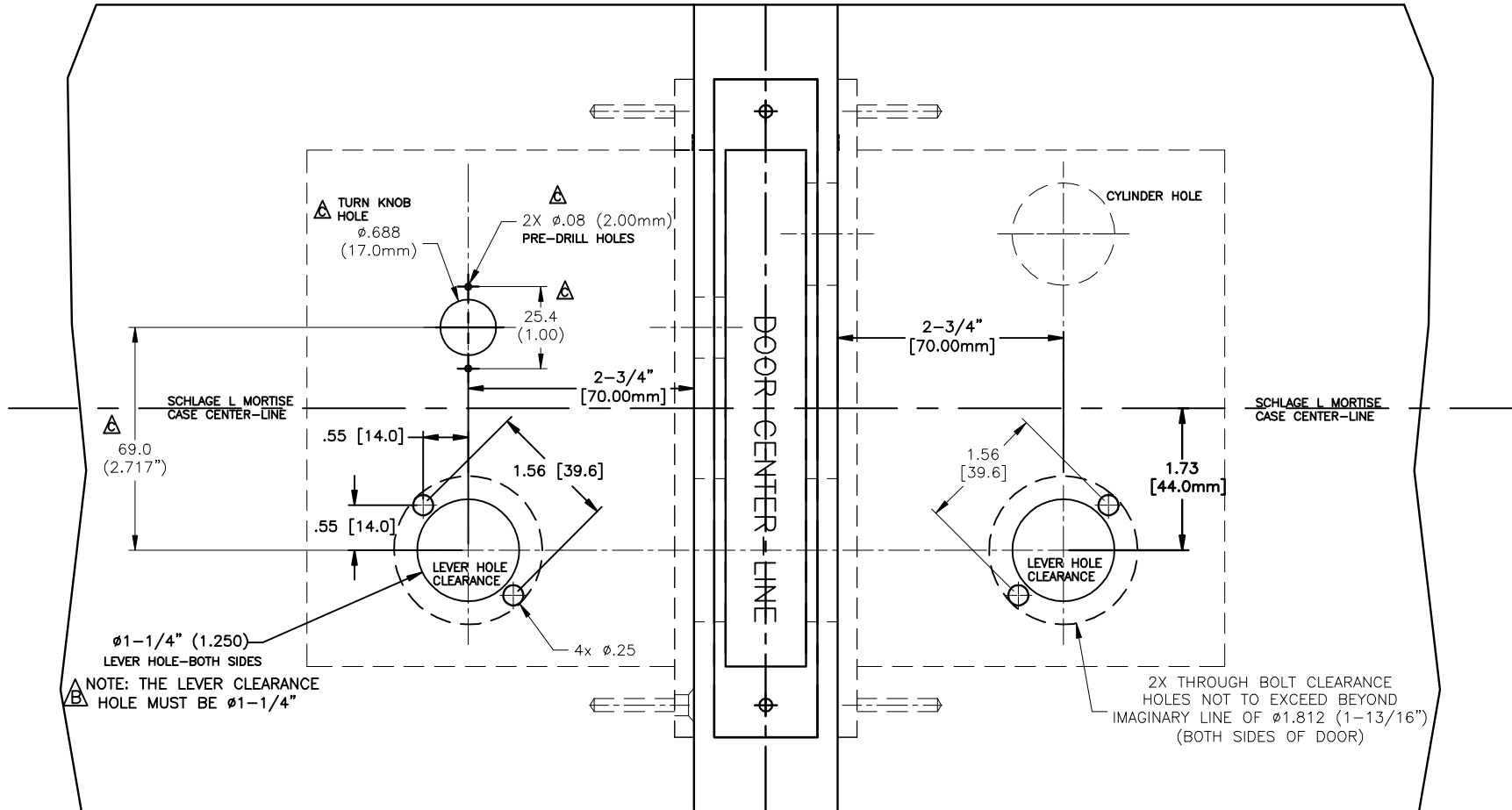


NOT TO SCALE

NOT TO SCALE

ALWAYS REFERENCE "SCHLAGE L" MORTISE "LOCKSET" INSTALLATION TEMPLATE.
 △ (THIS INSTRUCTION IS FOR FRASCIO TRIM ONLY)



NOT TO SCALE

INSIDE

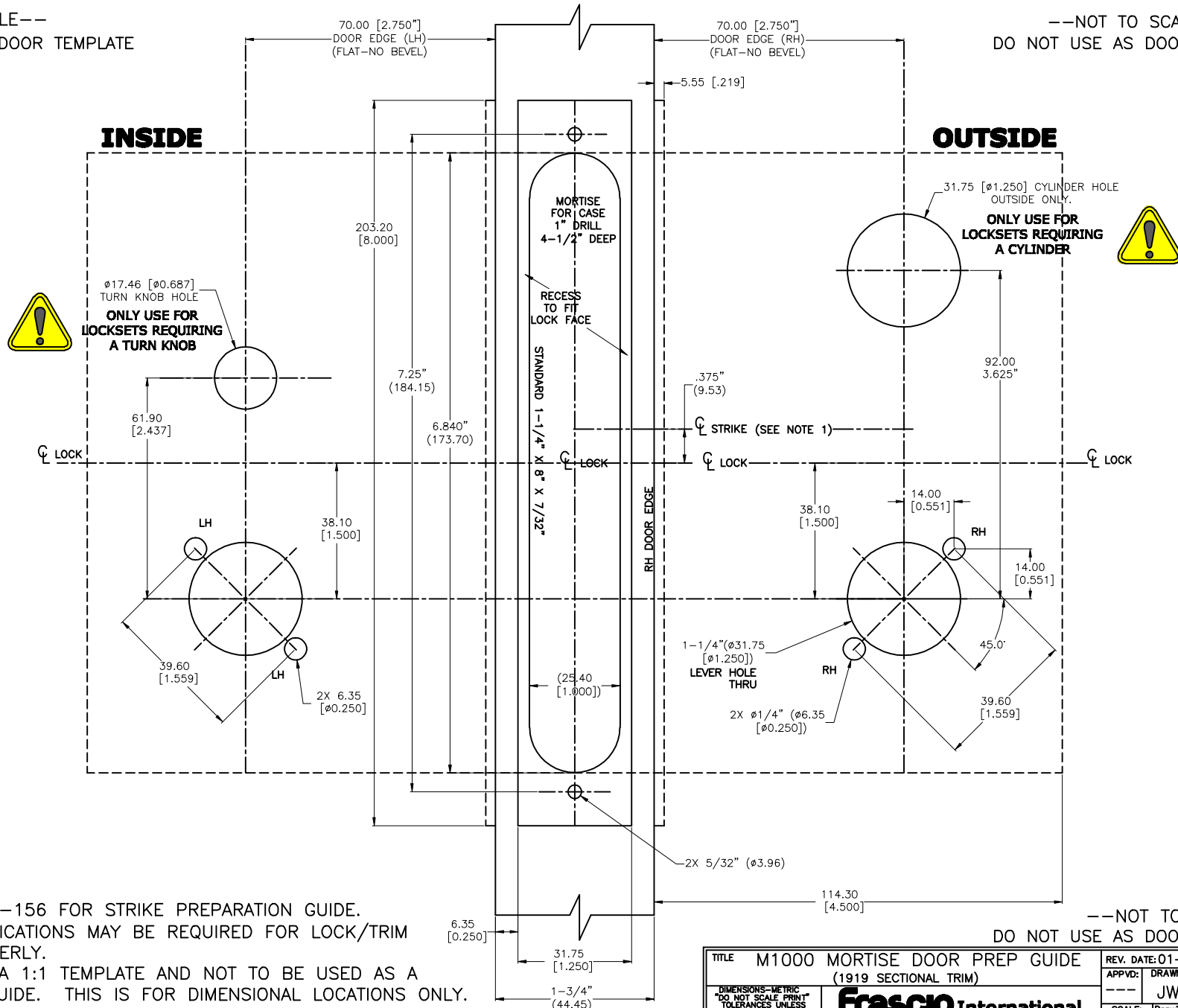
OUTSIDE—RH

 △
 NOT TO SCALE

TITLE		REV. DATE: 01-03-12		REV. C
SCHLAGE L MORTISE DOOR PREP FOR SECTIONAL "SM" ROSE		APPVD: ---	DRAWN BY: JWB	ORIG. DATE: 6-30-10
TOLERANCES—METRIC "DO NOT SCALE PRINT" TOLERANCES UNLESS OTHERWISE SPECIFIED: X.X = ±0.4 X.XX = ±0.15		SCALE: NTS		
Frascio International 8904 BASH ST. SUITE J, INDIANAPOLIS, INDIANA 46256 PH. (317)570-5835 FAX (317)570-5838		Drawing NO: DP-124		

--NOT TO SCALE--
DO NOT USE AS DOOR TEMPLATE

--NOT TO SCALE--
DO NOT USE AS DOOR TEMPLATE



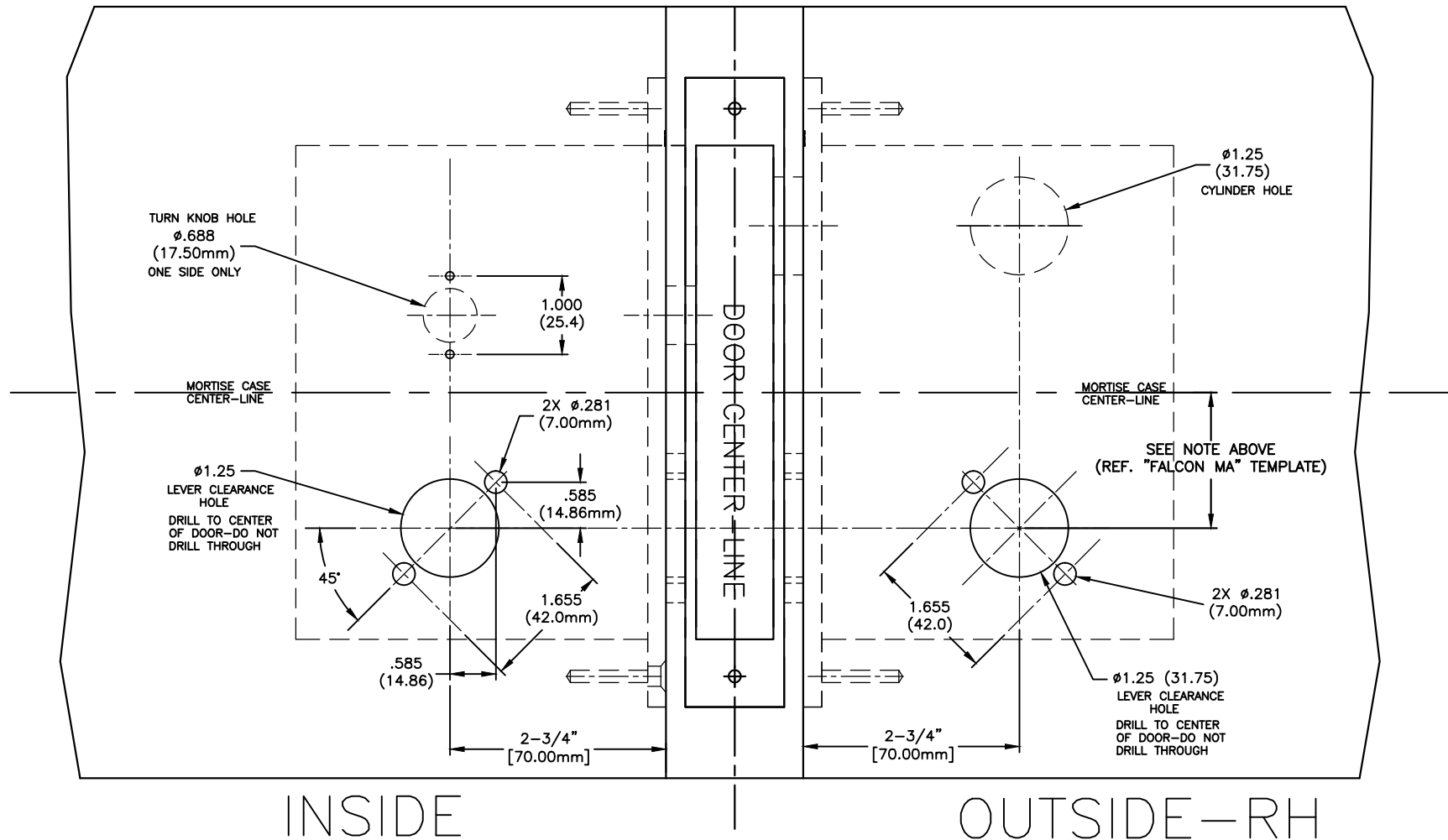
NOTES:

- REFER TO DP-156 FOR STRIKE PREPARATION GUIDE.
- SLIGHT MODIFICATIONS MAY BE REQUIRED FOR LOCK/TRIM TO FIT PROPERLY.
- THIS IS NOT A 1:1 TEMPLATE AND NOT TO BE USED AS A TAPED ON GUIDE. THIS IS FOR DIMENSIONAL LOCATIONS ONLY.
- RIGHT HAND DOOR PREP SHOWN.

--NOT TO SCALE--
DO NOT USE AS DOOR TEMPLATE

TITLE		REV. DATE: 01-24-14 REV. F	
M1000 MORTISE DOOR PREP GUIDE		APPVD: DRAWN BY: ORG. DATE:	
(1919 SECTIONAL TRIM)		JWB 12-16-13	
DIMENSIONS-METRIC		SCALE: Drawing NO:	
"DO NOT SCALE PRINT"		NTS DP-121	
TOLERANCES UNLESS OTHERWISE SPECIFIED:			
X.X = ± 0.4 DEG. ± 0.5			
X.XX = ± 0.15			
1011 3rd Avenue S.W. CARMEL, INDIANA 46032			
PH: (317) 663-0030 FAX: (317) 663-0029			

REFERENCE "FALCON MA" MORTISE LOCKSET INSTALLATION TEMPLATE
FOR ACTUAL DIMENSIONS PERTAINING TO THE LOCKCASE INSTALLATION
AND CENTER-TO-CENTER DIMENSIONS.



TITLE FALCON "MA" MORTISE DOOR PREP FOR SECTIONAL "SM" ROSE	
TOLERANCES—METRIC "DO NOT SCALE PRINT" TOLERANCES UNLESS OTHERWISE SPECIFIED: X.X = ±0.4 X.XX = ±0.15	
Frascio International 8904 BASH ST. SUITE J, INDIANAPOLIS, INDIANA 46256 PH. (317)570-5835 FAX (317)570-5838	

REV. DATE: 12-15-14	REV. A
APPVD: ---	DRAWN BY: JWB
	ORIG. DATE: 03-29-11
SCALE: NTS	Drawing NO: DP-126

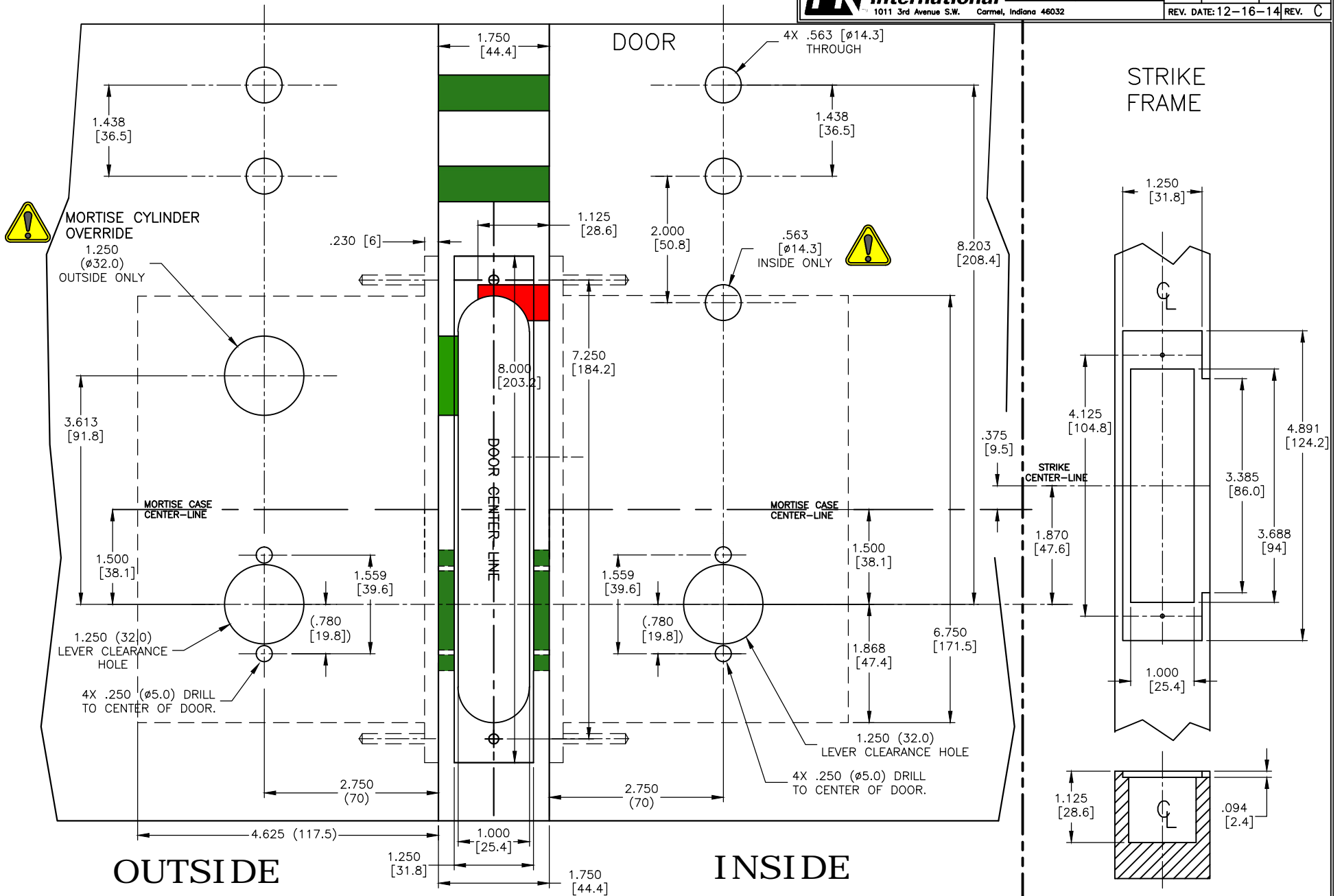
TITLE SM TRIM with ANSI MORTISE
SALTO AELEMENT, LA1T07xx,MECH.OVERRIDE




PH (317)663-0030
FX (317)663-0029

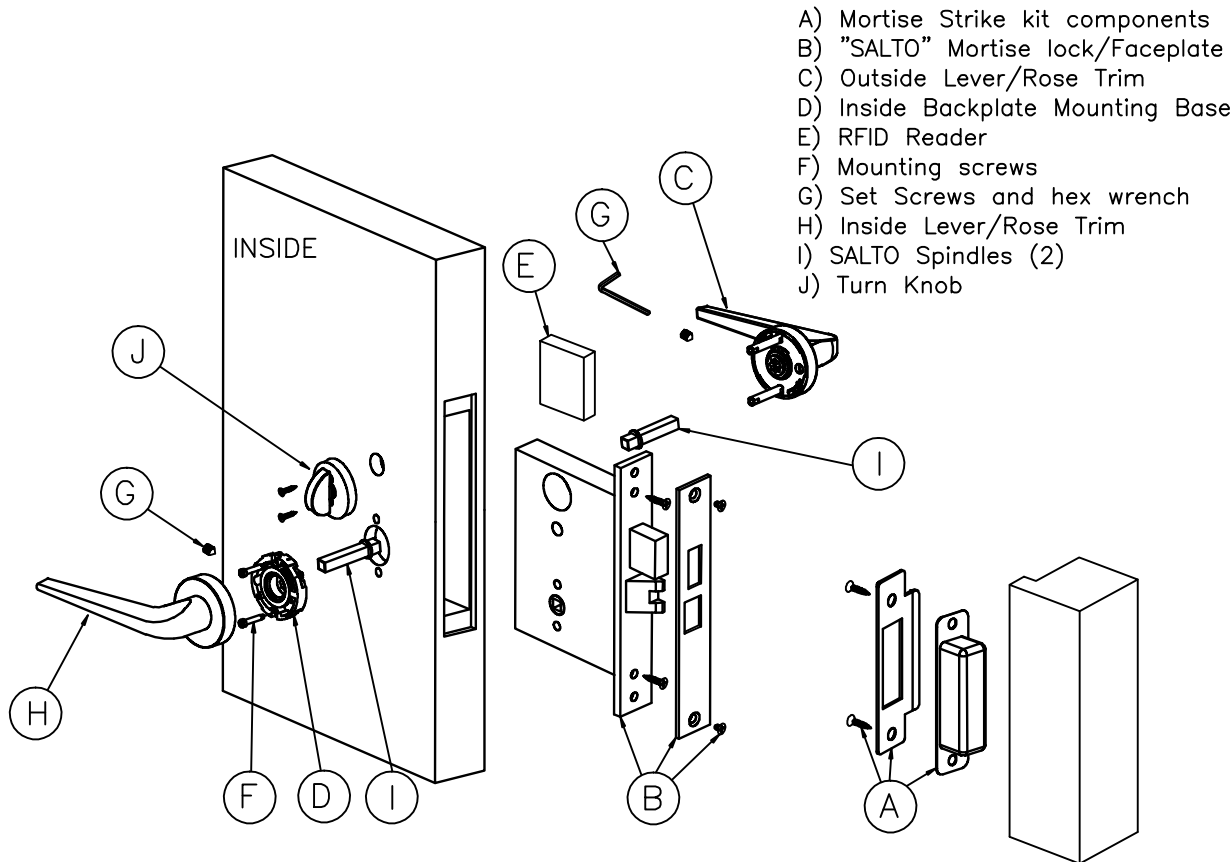
TOLERANCES UNLESS
OTHERWISE SPECIFIED:
X.X (METRIC) = ±0.4
X.XX (METRIC) = ±0.15
(X.XX) (UNIFIED) = ±.015
(.XXX) (UNIFIED) = ±.005
DEG. ±0.5

SCALE: NTS
Drawing NO: DP-184
APPVD: JWB
DRAWN BY: ORG. DATE: 10-10-14
REV. DATE: 12-16-14 REV. C



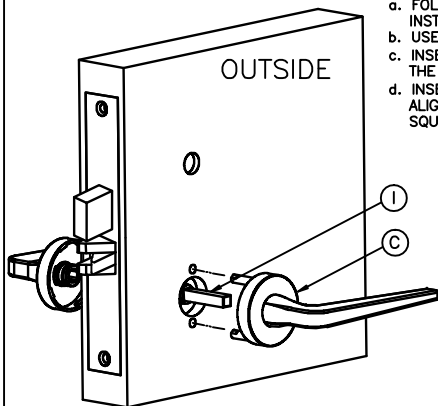
TITLE SM TRIM with ANSI MORTISE		TOLERANCES UNLESS OTHERWISE SPECIFIED		SCALE: Drawing NO:	
SALTO AELEMENT, LA1T07xx, MECH OVERRIDE		X.X (METRIC) = ±0.4 X.XX(METRIC) = ±0.15 (X.XX)(UNFINED) = ±0.015 (X.XX)(UNFINED) = ±0.009" DEG. ±0.5		NTS DP-186	
 FIR International 1011 3rd Avenue S.W. Carmel, Indiana 46032		PH. (317)683-0030 FAX (317)683-0029		APPVD: --- DRAWN BY: ORG. DATE: --- JWB 08-12-13	
				REV. DATE: 12-17-14 REV. C	

AElement LEVER TRIM INSTALLATION INSTRUCTIONS

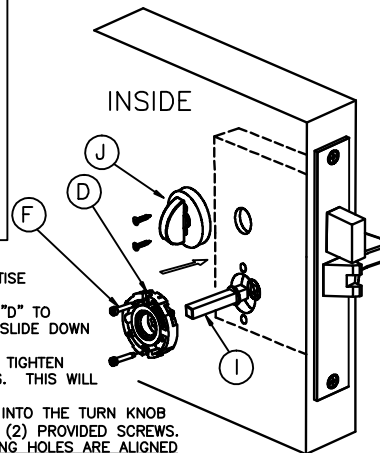


BEFORE ASSEMBLING, CAREFULLY READ THE INSTALLATION INSTRUCTIONS.

- STEP 1)
 a. FOLLOW THE LOCK MANUFACTURERS INSTRUCTIONS INSTALLING THE MORTISE LOCK CASE.
 b. USE FRASCIO DOOR PREP GUIDE, DP-125.
 c. INSERT THE OUTSIDE LEVER SPINDLE "I" INTO THE MORTISE LOCKCASE.
 d. INSERT THE OUTSIDE TRIMSET "C" CAREFULLY ALIGNING THE SPINDLE THROUGH APPROPRIATE SQUARE HOLE AND INTO THE LEVER.

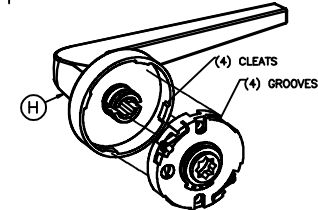
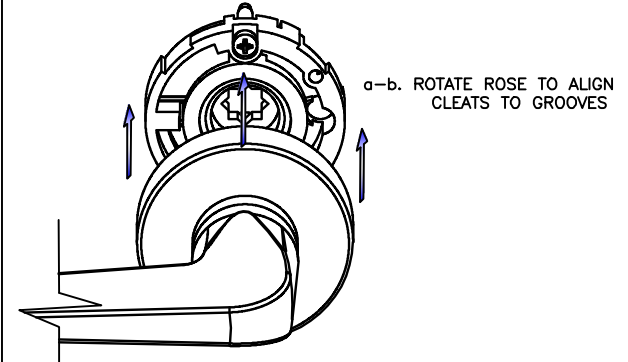


- STEP 2)
 a. INSERT THE SPINDLE "I" INTO THE MORTISE CASE HUB.
 b. ALIGN THE BACKPLATE MOUNTING BASE "D" TO THE APPROPRIATE SPINDLE HOLE AND SLIDE DOWN TO THE FACE OF THE DOOR.
 c. INSERT (2) MOUNTING SCREWS "F" AND TIGHTEN FIRM--DO NOT OVER-TORQUE SCREWS. THIS WILL PREVENT DOOR COMPRESSION.
 d. INSERT THE TURN KNOB ASSEMBLY "J" INTO THE TURN KNOB HUB AND FASTEN SECURELY WITH THE (2) PROVIDED SCREWS. MAKE SURE TURN KNOB ROSE MOUNTING HOLES ARE ALIGNED VERTICALLY.

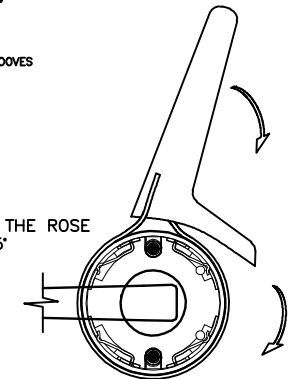


STEP 3)

- a. ONCE THE MOUNTING BASE IS INSTALLED, INSERT THE INSIDE LEVER/ROSE ASSEMBLY "H" OVER THE SPINDLE AND ROTATE THE ROSE ALONE TO ALIGN THE (4) CLEATS WITH (4) MATING GROOVES IN THE MOUNTING BASE. SEE IMAGE a-b BELOW.
 b. ONCE ALIGNED, PUSH FIRMLY UNTIL THE ROSE IS UP AGAINST THE SURFACE OF THE DOOR.



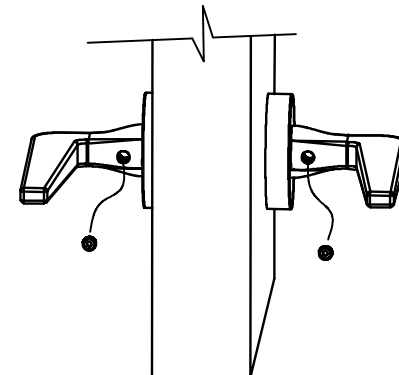
- c. USING A STRAP WRENCH, ROTATE THE ROSE CLOCK-WISE APPROXIMATELY 15° UNTIL THE LOCKING SPRINGS ENGAGE.



(NOTE: SHOWING INSIDE MOUNTING BASE FOR VISUAL REFERENCE ONLY)

STEP 4)

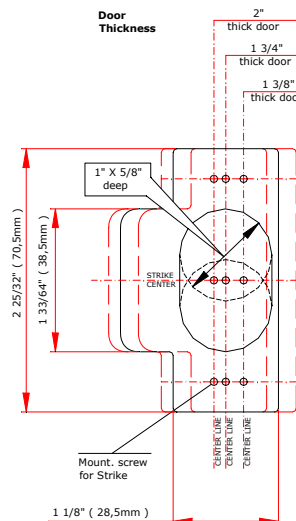
- a. INSERT THE LEVER SET SCREWS IN THE OUTSIDE AND INSIDE LEVER AND TIGHTEN FIRMLY WITH HEX WRENCH SUPPLIED.



DOOR PREPARATION TEMPLATE FOR TUBULAR LATCHSET

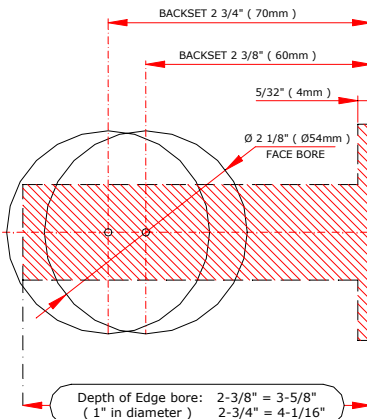
IMPORTANT: READ ALL INSTRUCTIONS CAREFULLY BEFORE PREPARING DOOR

STRIKE TEMPLATE



LATCH TEMPLATE

Fold on dotted line and attach to the door at desire height. Mark the position of necessary holes for Face and Edge bores.



Door Face

Door Edge

Door Thickness

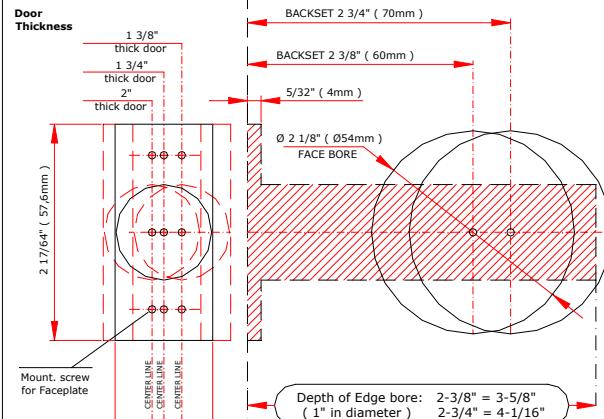
" Machining dimensions in millimeters are exact. Inch dimensions are provided as a reference."

DOOR PREPARATION TEMPLATE FOR TUBULAR LATCHSET

IMPORTANT: READ ALL INSTRUCTIONS CAREFULLY BEFORE PREPARING DOOR

LATCH TEMPLATE

Fold on dotted line and attach to the door at desire height. Mark the position of necessary holes for Face and Edge bores.



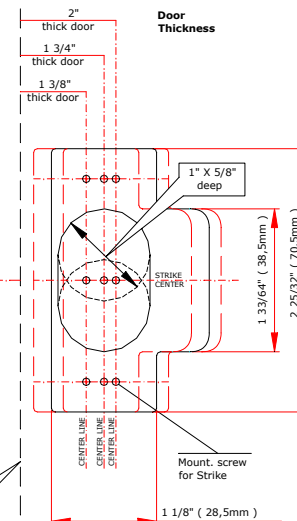
Door Edge

Door Face

Door Thickness

" Machining dimensions in millimeters are exact. Inch dimensions are provided as a reference."

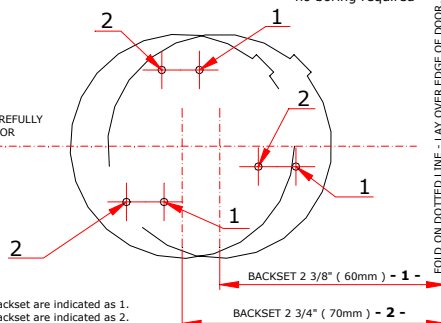
STRIKE TEMPLATE



DUMMY TRIM TEMPLATE 1903/1904/1905 - Surface mount only, no boring required

COD.4101001

IMPORTANT: READ ALL INSTRUCTIONS CAREFULLY BEFORE PREPARING DOOR



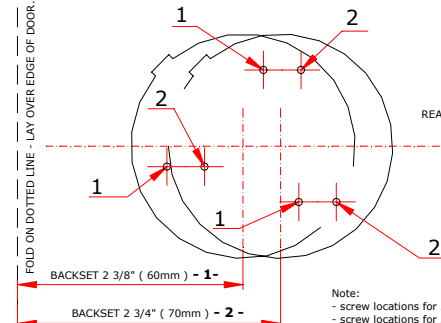
Note:
- screw locations for 2-3/8" backset are indicated as 1.
- screw locations for 2-3/4" backset are indicated as 2.

frascio

DUMMY TRIM TEMPLATE 1903/1904/1905 - Surface mount only, no boring required

COD.4101001

IMPORTANT: READ ALL INSTRUCTIONS CAREFULLY BEFORE PREPARING DOOR



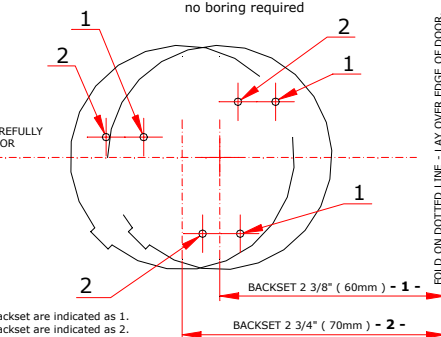
Note:
- screw locations for 2-3/8" backset are indicated as 1.
- screw locations for 2-3/4" backset are indicated as 2.

frascio

DUMMY TRIM TEMPLATE 1912 - Surface mount only, no boring required

COD.4101001

IMPORTANT: READ ALL INSTRUCTIONS CAREFULLY BEFORE PREPARING DOOR



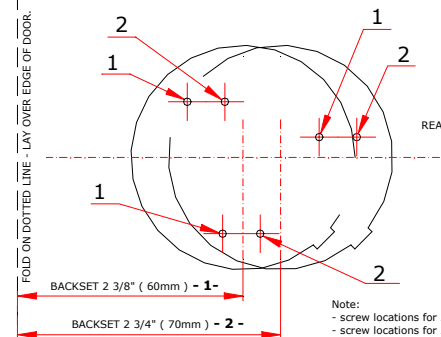
Note:
- screw locations for 2-3/8" backset are indicated as 1.
- screw locations for 2-3/4" backset are indicated as 2.

frascio

DUMMY TRIM TEMPLATE 1912- Surface mount only, no boring required

COD.4101001

IMPORTANT: READ ALL INSTRUCTIONS CAREFULLY BEFORE PREPARING DOOR

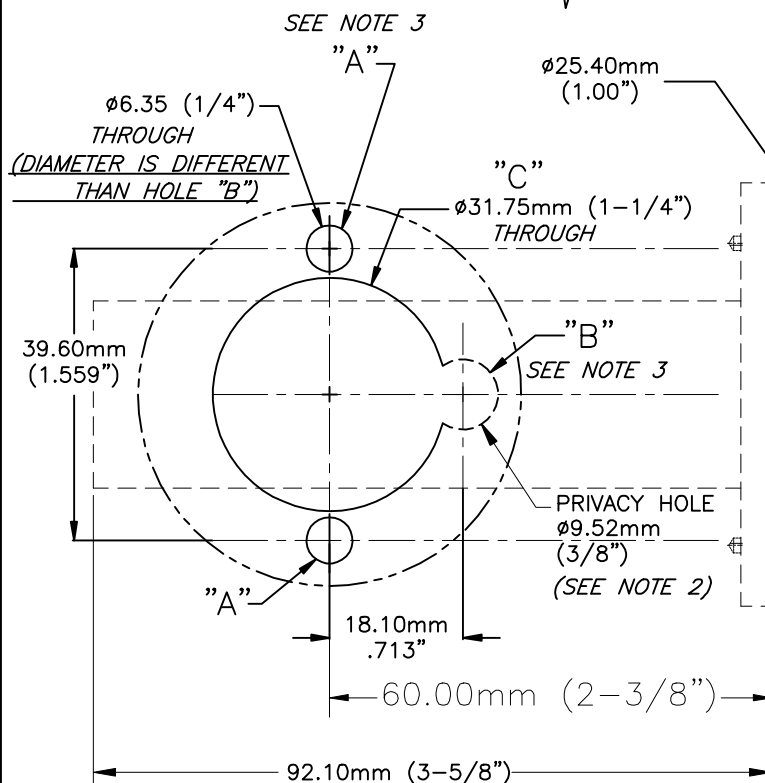


Note:
- screw locations for 2-3/8" backset are indicated as 1.
- screw locations for 2-3/4" backset are indicated as 2.

frascio

USE THIS SIDE FOR BACKSET: **60.00 (2-3/8")**

NOT TO
SCALE



NOTES:

1. THIS TEMPLATE PROVIDES INFORMATION FOR EITHER 2-3/8" OR 2-3/4" BACKSETS. USE THE APPROPRIATE DIMENSIONS FOR THE CORRECT BACKSET.
2. THIS TEMPLATE PROVIDES INFORMATION FOR BOTH PASSAGE OR PRIVACY LATCHES. ADDITIONAL HOLE "B" IS DRILLED FOR PRIVACY LATCHES--HOLE "B" NOT REQUIRED FOR PASSAGE LATCH.
3. DRILL HOLES "A" (AND "B" IF REQUIRED FOR PRIVACY) BEFORE HOLE "C".

HOLE "B" IS LARGER THAN HOLE(S) "A"

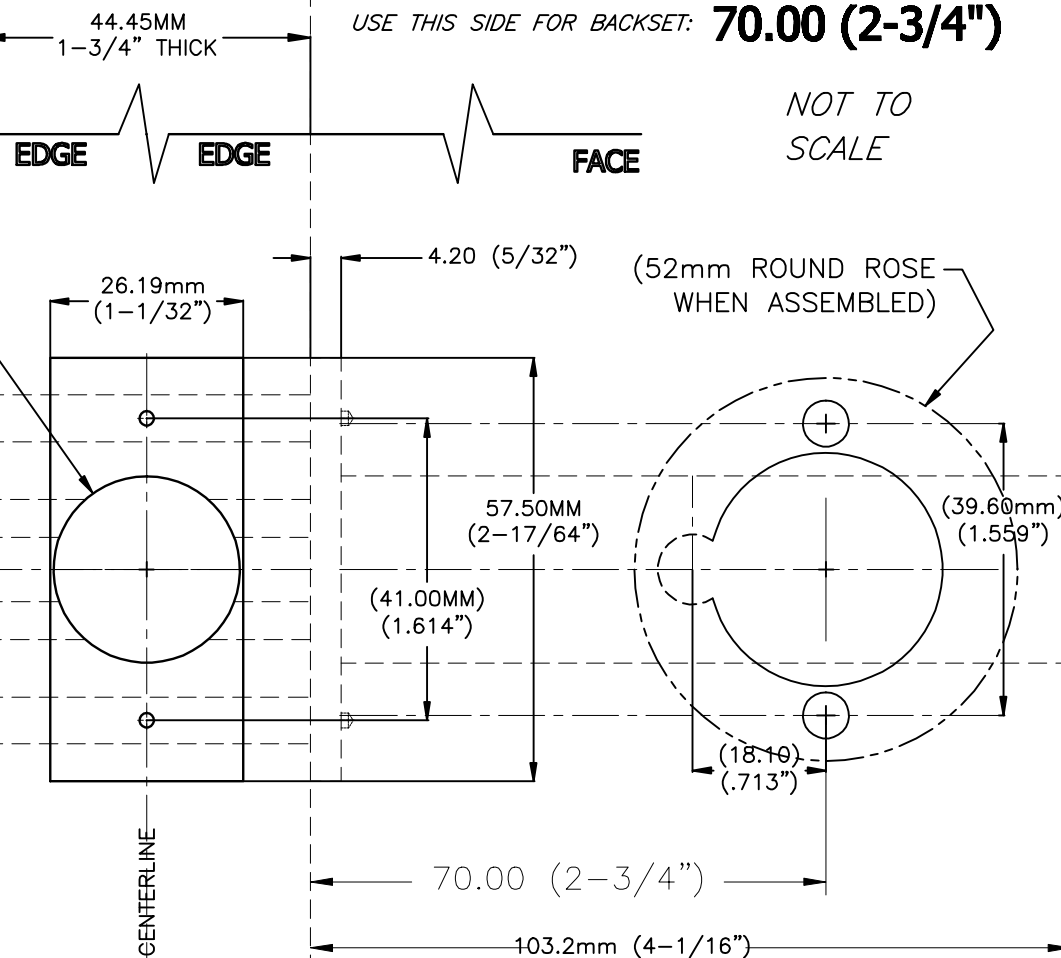
DP-115

1919 DOOR PREP-PASSAGE/PRIVACY 12-6 ORIENTATION
Originated: OCT 5. 09 REVISED: 04-19-12

NOT TO
SCALE

USE THIS SIDE FOR BACKSET: **70.00 (2-3/4")**

NOT TO
SCALE



TUBULAR LATCH
"PASSAGE" OR "PRIVACY"

1919-DOOR PREPARATION GUIDE
12-6 ORIENTATION, 39.6mm C-C
2-3/8" OR 2-3/4" BACKSET
NOT TO SCALE

1. FOLD TEMPLATE ON DASH-LINE, "FOLD EDGE".
2. LINE-UP ON EDGE OF DOOR AT APPROPRIATE HEIGHT.
3. MARK AND DRILL HOLES FOR SPECIFIC LATCH (2-3/8" OR 2-3/4") "PASSAGE" OR "PRIVACY".
4. FOR EASE OF MARKING, USE TAPE TO HOLD TEMPLATE IN PLACE.

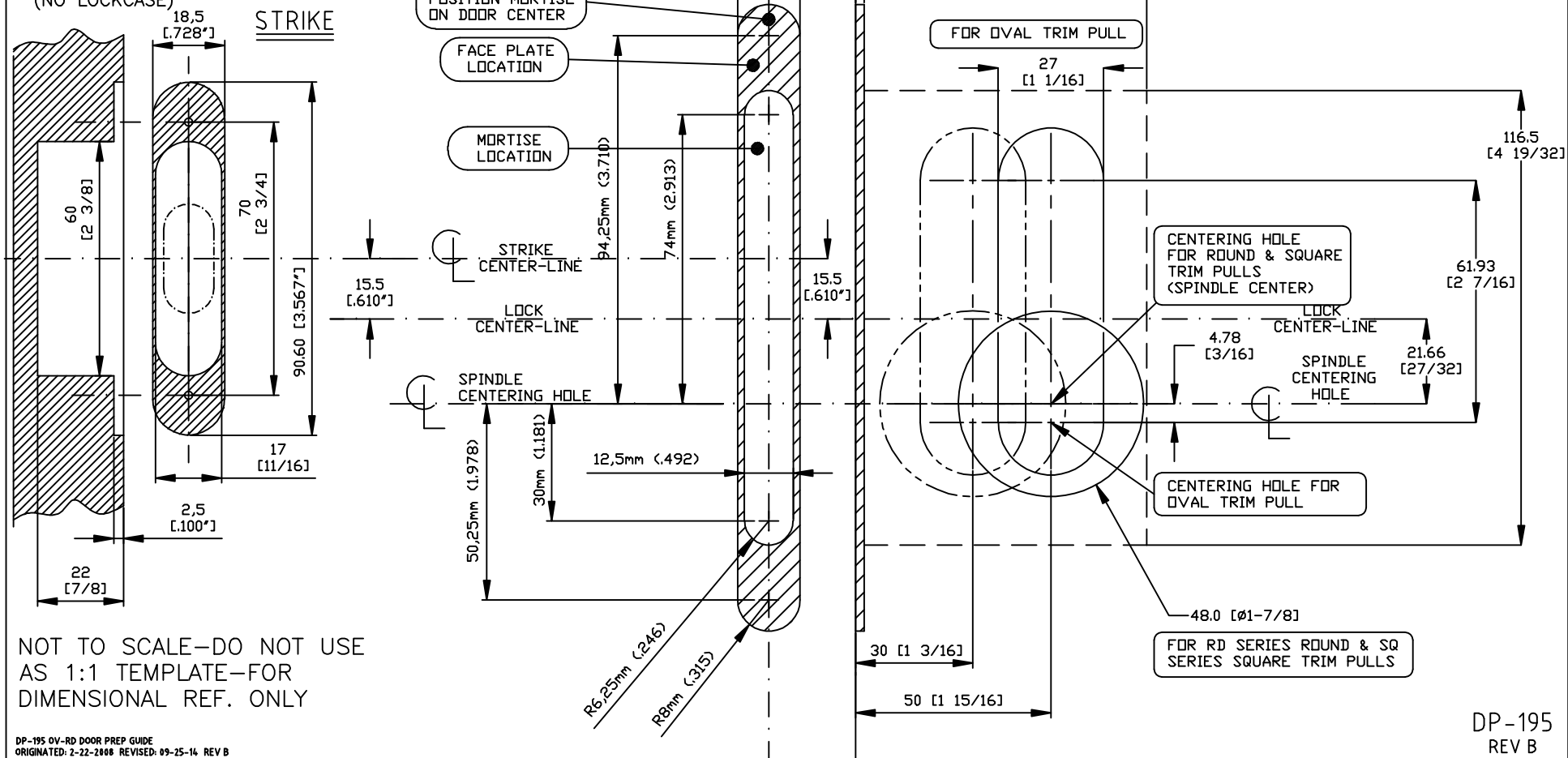
OV-RD-SQ Series POCKET DOOR PREPARATION GUIDE



NOT TO SCALE—DO NOT USE AS 1:1
TEMPLATE—FOR DIMENSIONAL REF. ONLY

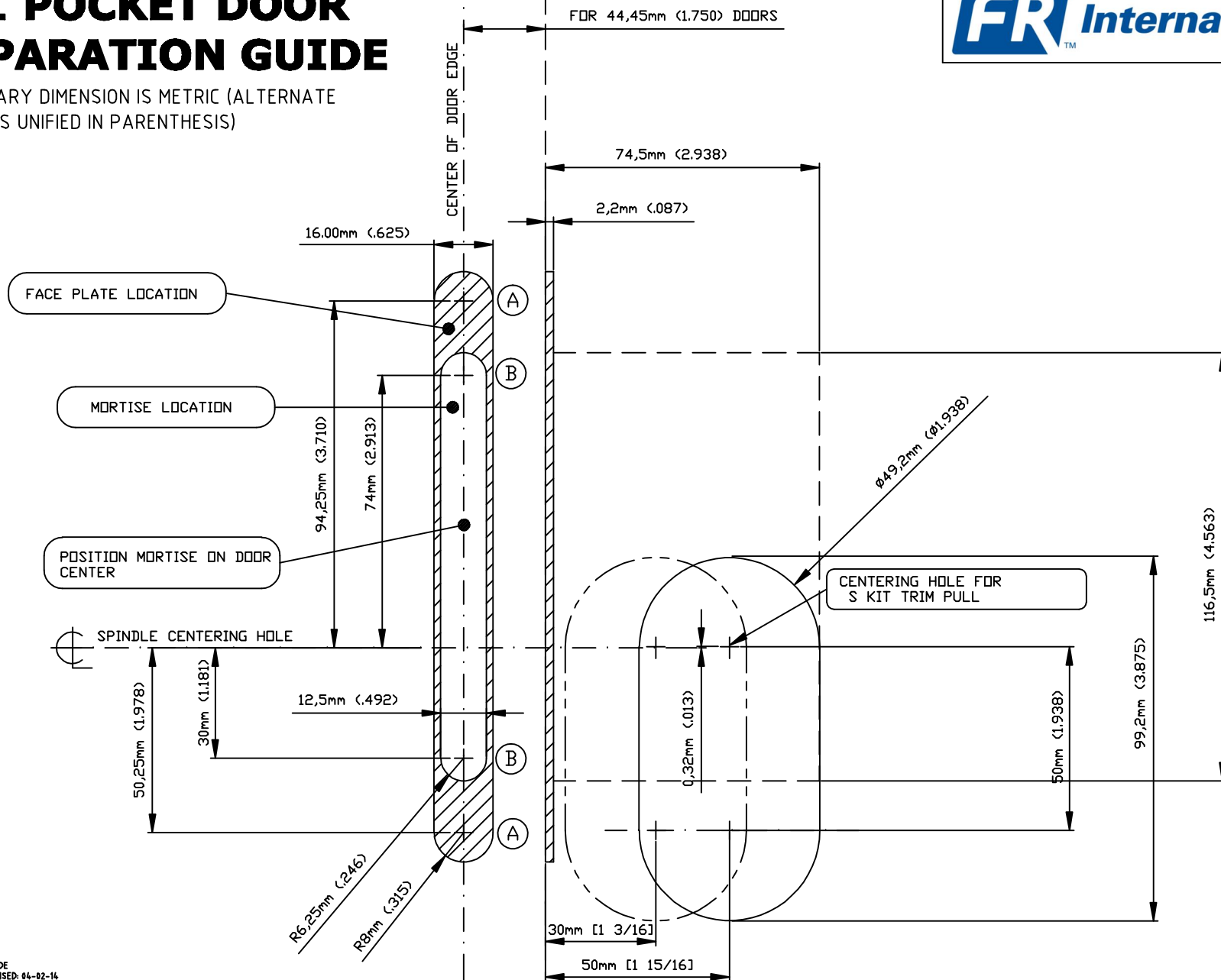
NOTES:

- 1) PRIMARY DIMENSION IS METRIC (ALTERNATE DIMENSION IS UNIFIED IN PARENTHESIS)
- 2) INCLUDE DOOR EDGE PREP. FOR PRIVACY FUNCTION ONLY—WITH LOCKCASE. PASSAGE TRIM REQUIRES NO EDGE PREP. (NO LOCKCASE)



TD-1 POCKET DOOR PREPARATION GUIDE

NOTE: PRIMARY DIMENSION IS METRIC (ALTERNATE
DIMENSION IS UNIFIED IN PARENTHESIS)



- NOTES:
- 1) TRIM "OV" ONLY.
 - 2) TRIM RD, SQ ONLY.
 - 3) STRIKEPLATE AREA TO BE RECESSED 4.0mm [.156] DEEP.
 - 4) POSITION STRIKE PLATE INTO CAVITY AND MARK MOUNTING HOLES WITH PUNCH. REMOVE AND DRILL.
 - 5) ALTERNATE BACKSET DIMENSION IS 60.0mm OR 2.375".

Description:
OV-RD-SQ, SL2 SERIES DOOR PREP



TOLERANCES UNLESS OTHERWISE SPECIFIED:
X.X (METRIC)= ±0.5
X.XX(METRIC)= ±0.15
0.00"(UNIFIED)= ±.015"
0.000"(UNIFIED)= ±.005"

Drawing No:
DP-215

Drawn By: JWB

Orig.Date 12-19-14

Rev. Date:

Rev.:

STRIKE PLATE PREPARATION

(3-1/2" STANDARD STRIKE)

OVAL-ROUND-SQUARE TRIM INSTALLATION

