

# OHC100 Series



Overhead concealed closers control door opening and closing, while providing an aesthetically pleasing design option for both interior and exterior use. The Falcon OHC100 Series is used with aluminum doors and frames, providing years of maintenance-free performance.

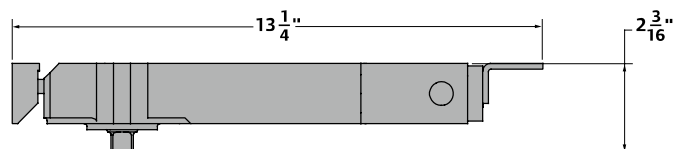
## Standard features

- Economical option for overhead concealed closer
- Retrofittable, matches Jackson hole pattern
- Cast iron construction ensures lasting durability
- Fits inside standard aluminum frame header for improved aesthetics and increased security.
- 90° and 105° standard opening with optional hold-open
- Multiple size options available:
  - OHC 101 adjustable sizes 1-3
  - OHC 100 adjustable sizes 3-5
- Meets UL228
- 5 - year warranty

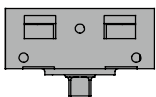
**Top view**



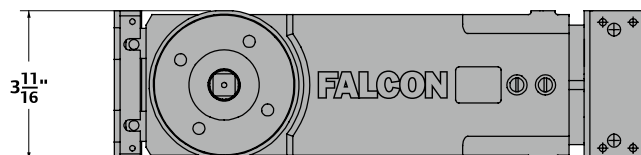
**Side view**



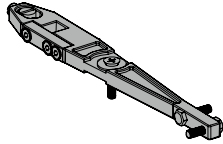
**End view**



**Bottom view**

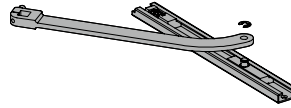


## Installation accessories



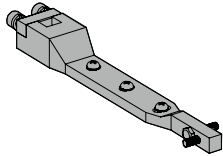
**"S" arm, OHC100-SL,  
OHC100A-SL**

Non-handed arm, side load,  
center hung, steel forge.



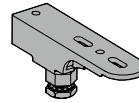
**"VO" arm, OHC100-VO,  
OHC100A-VO**

Non-handed arm, offset arm w/  
slide channel, steel forge.



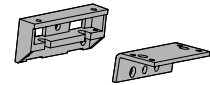
**"A" arm, OHC100-EL, OHC100A-EL**

Non-handed arm, end load, center  
hung, steel forge.



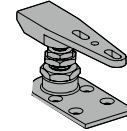
**"GE" pivots, OHC100-GE,  
OHC100A-GE**

Non-handed, adjustable height,  
center hung, used with side load  
arm.



**"AFK" mounting brackets, OHC100-AFK**

Provides anchorage for adjustable size  
cylinder to the door frame.



**"DP" pivots, OHC100-DP,  
OHC100A-DP**

Non-handed, adjustable height,  
center hung, used with end load  
arm.