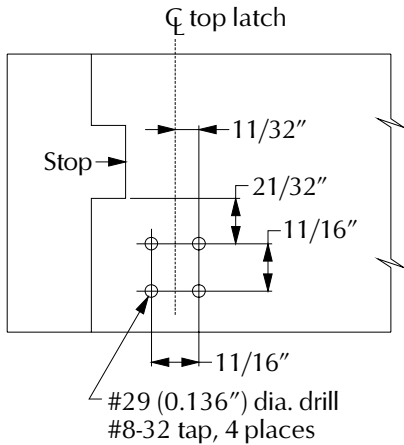
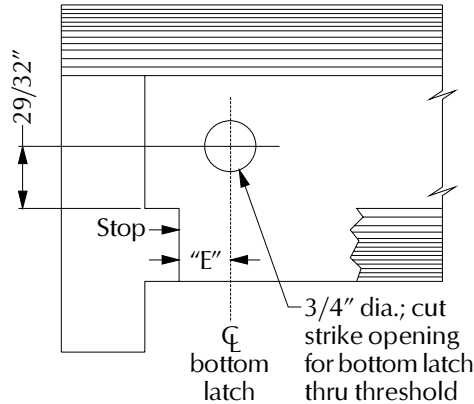


HEAD JAMB AND THRESHOLD PREPARATION



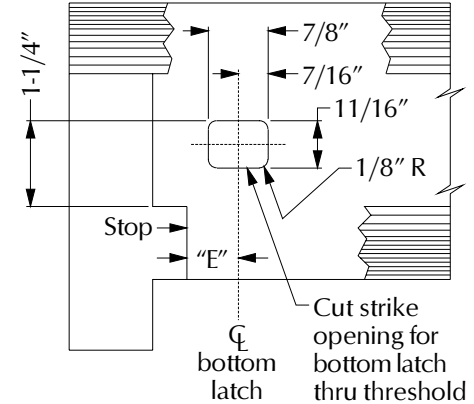
Bottom plan view of head jamb
(looking up)

Upper Strike Head Jamb Preparation



Top plan view of threshold

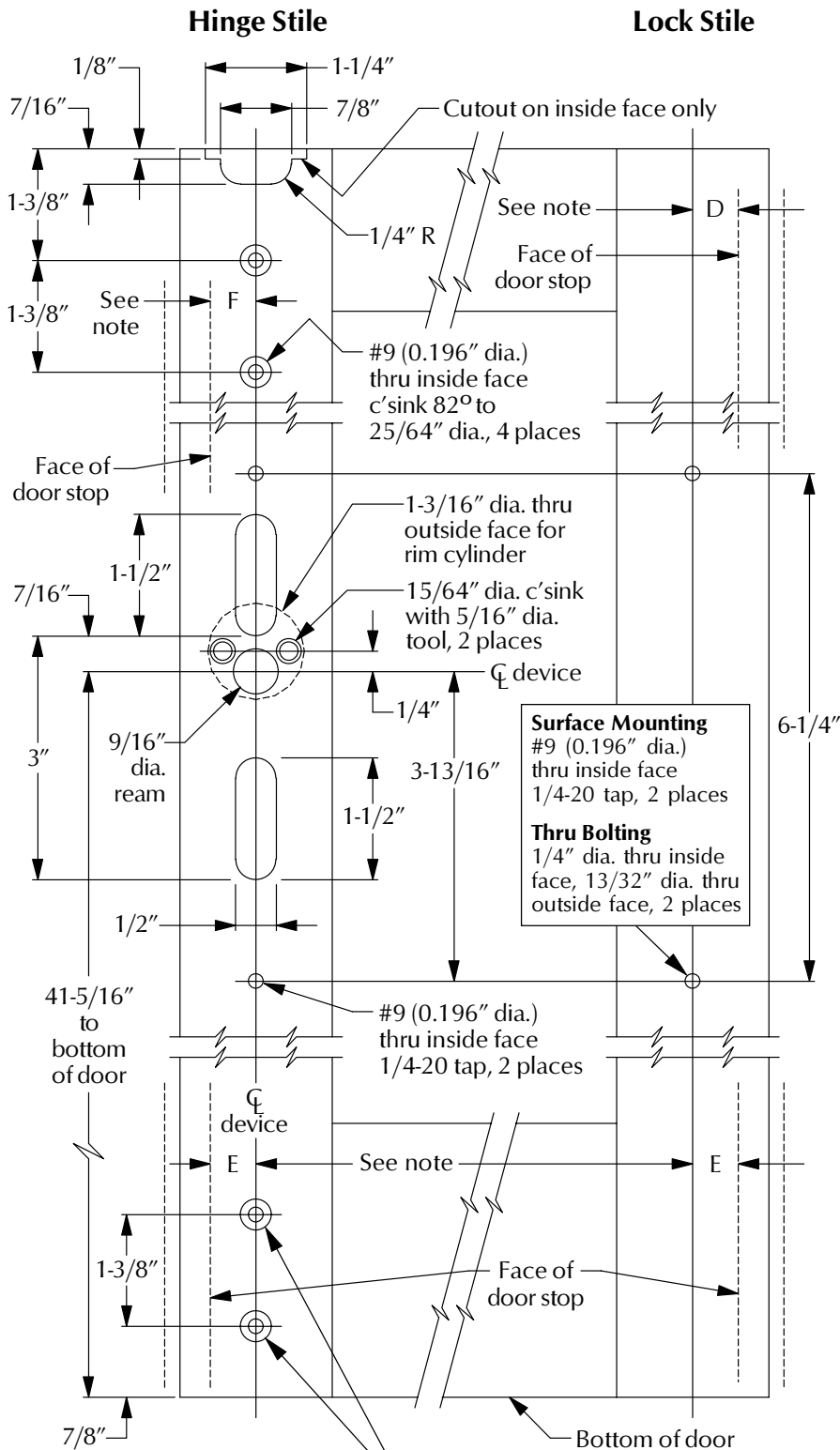
Rod Latch (RL) or Hex Bolt Threshold Preparation



Top plan view of threshold

Pullman Latch Threshold Preparation

ALUMINUM DOOR PREPARATION

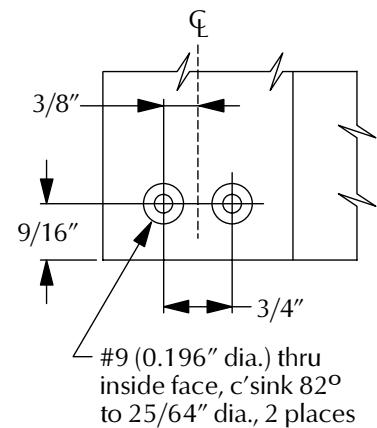


Pullman (PL) and Rod Latch (RL) Door Preparation

NOTES

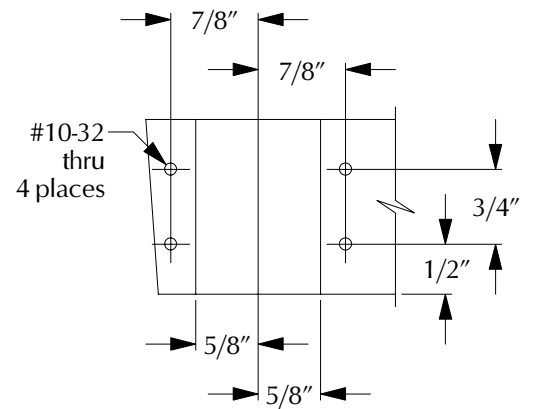
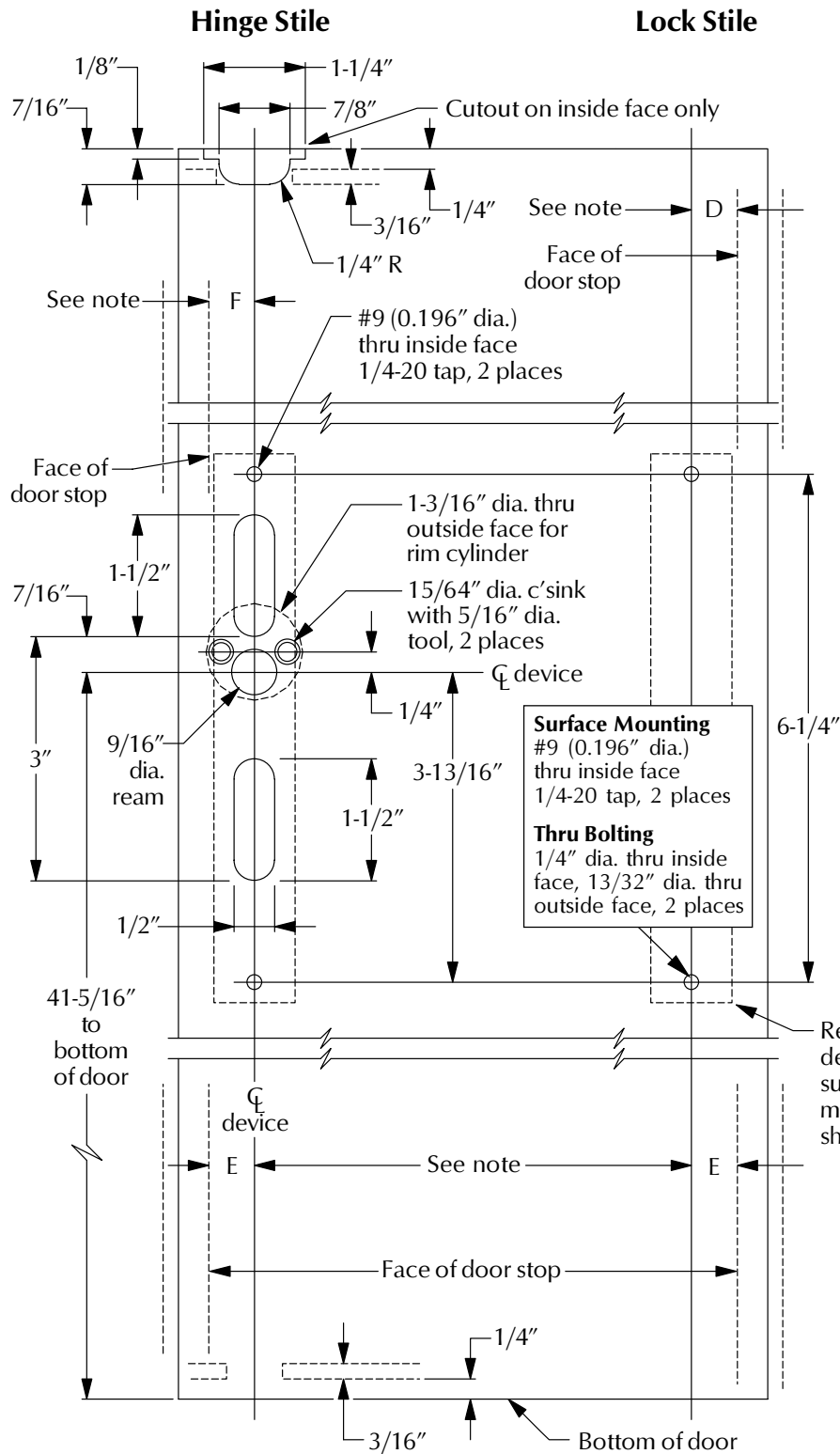
D: Dimension from door stop face to housing CL is 3/4" minimum for medium and wide stiles.

E and F: Dimension from door stop face to top or bottom latch CL can be the same as "D" or can vary to suit door conditions.



Hex Bottom Bolt Door Preparation

HOLLOW METAL DOOR PREPARATION



Top view of door
(bottom view of door is typical)

Top and Bottom Latch Bracket Door Preparation

NOTES

D: Dimension from door stop face to housing CL is 3/4" minimum for medium and wide stiles.

E and F: Dimension from door stop face to top or bottom latch CL can be the same as "D" or can vary to suit door conditions.

NOTE

Reinforcement in head jamb for top strike is 3/16" minimum. Reinforcement in stile for panic device is 1/8" minimum.