

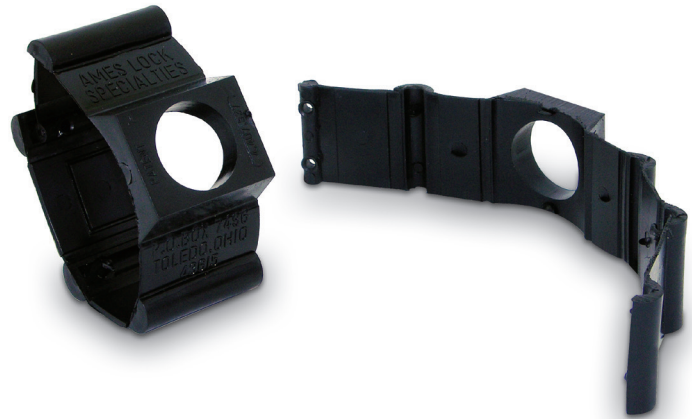
## Ames Door & Lock Support

Here's the answer you've been looking for to completely eliminate all collapsing and loosening problems when installing locks on hollow metal doors! The Ames Door & Lock Support is both flexible and adjustable thus assuring use for any locks requiring 2-1/8", 1-5/8" or 1-1/2" cross bores.

Part Number Width  
 ODDA1346 (1-3/4")  
 ODDA1386 (1-3/8")

Some of the popular style locks the Ames Door & Lock Support can be used with include:

- Schlage 500 & 400 series
- Weslock
- Russwin
- Medeco
- Corbin
- Dexter
- Kwikset
- Weiser
- Sargent

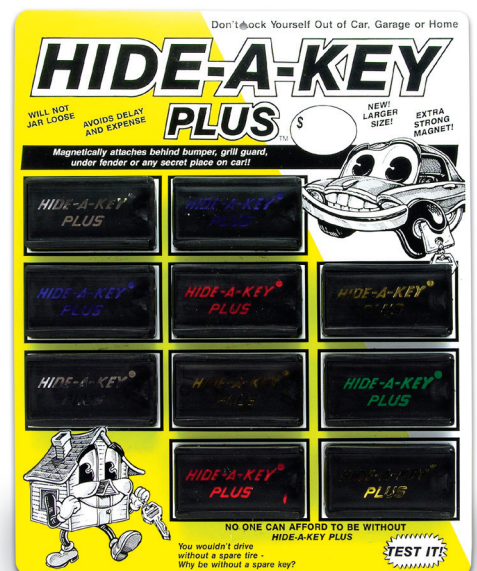


## Hide-A-Key



### HAK1

Includes 1 Magnetic Display Board  
 and 12 Hide-A-Keys



### HKP-21

Includes Magnetic Display Board  
 with 10 Hide-A-Key Pluses

