



ELCOMA
Raising the bar since 1988

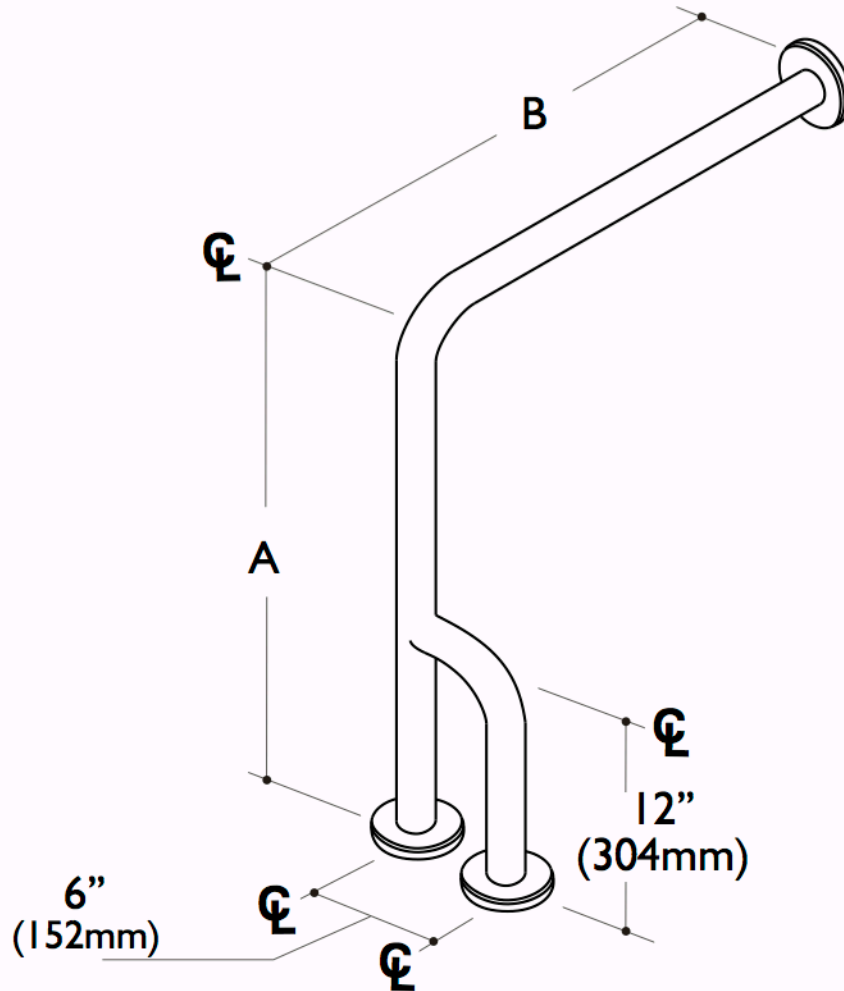
Standard Configurations

Specify Dimensions A, B, C, D as required.

* Typical wall clearance 1 1/2" (38mm).

Dimensions are from centreline to centreline of tube
and from wall to centreline of tube.

☞ Centreline.



16 Wall to Floor Rail c/w outrigger

Qty. Req'd	
Bar Diameter	
Finish & Material	
Grip	
Flange Style	
Comments	

Custom sizes and configurations are available to suit special requirements. Please specify