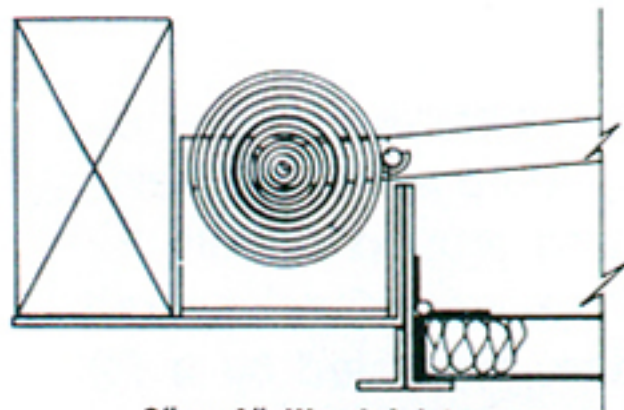
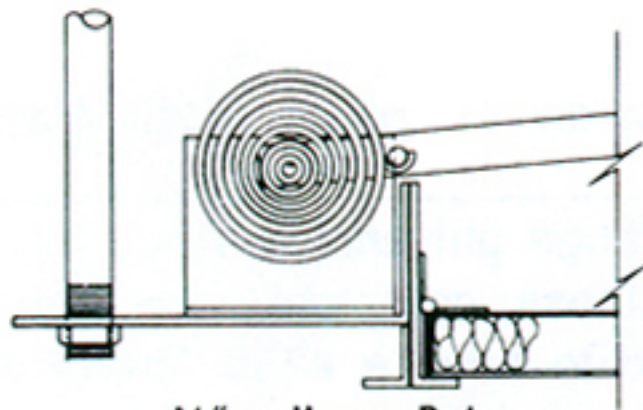


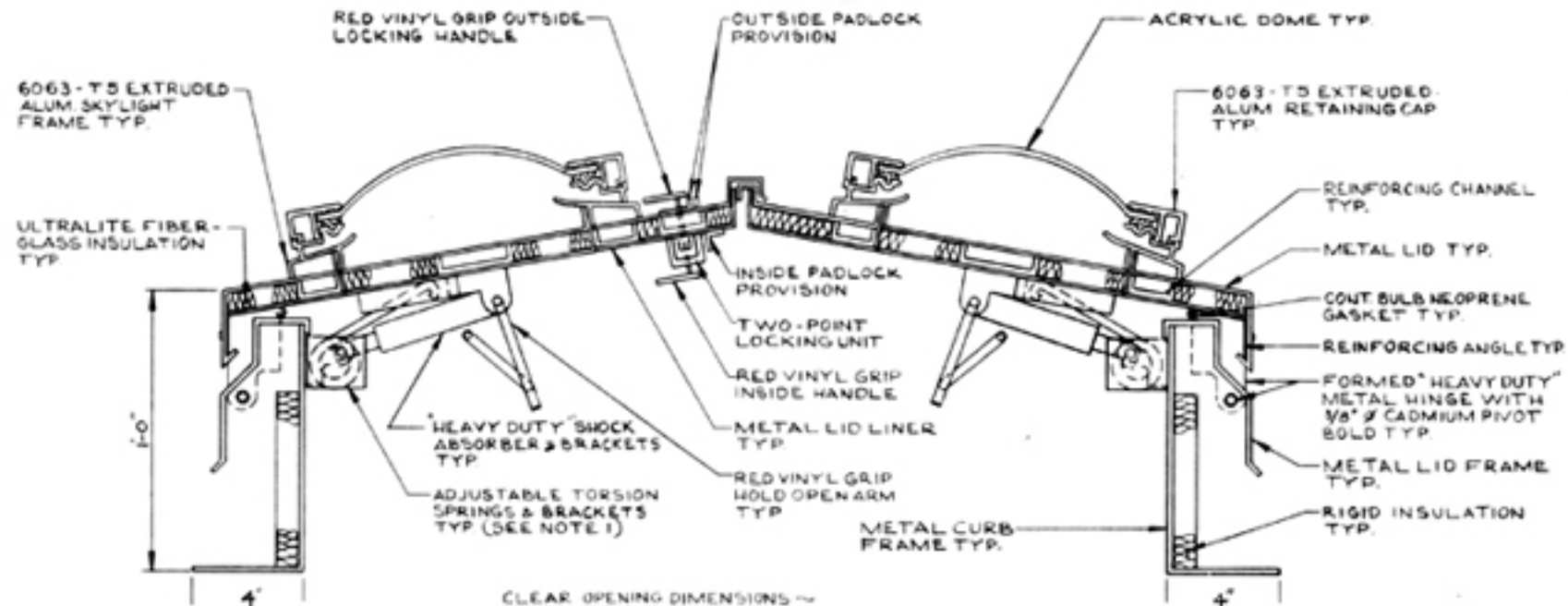
TYPES OF CEILING CONDITIONS

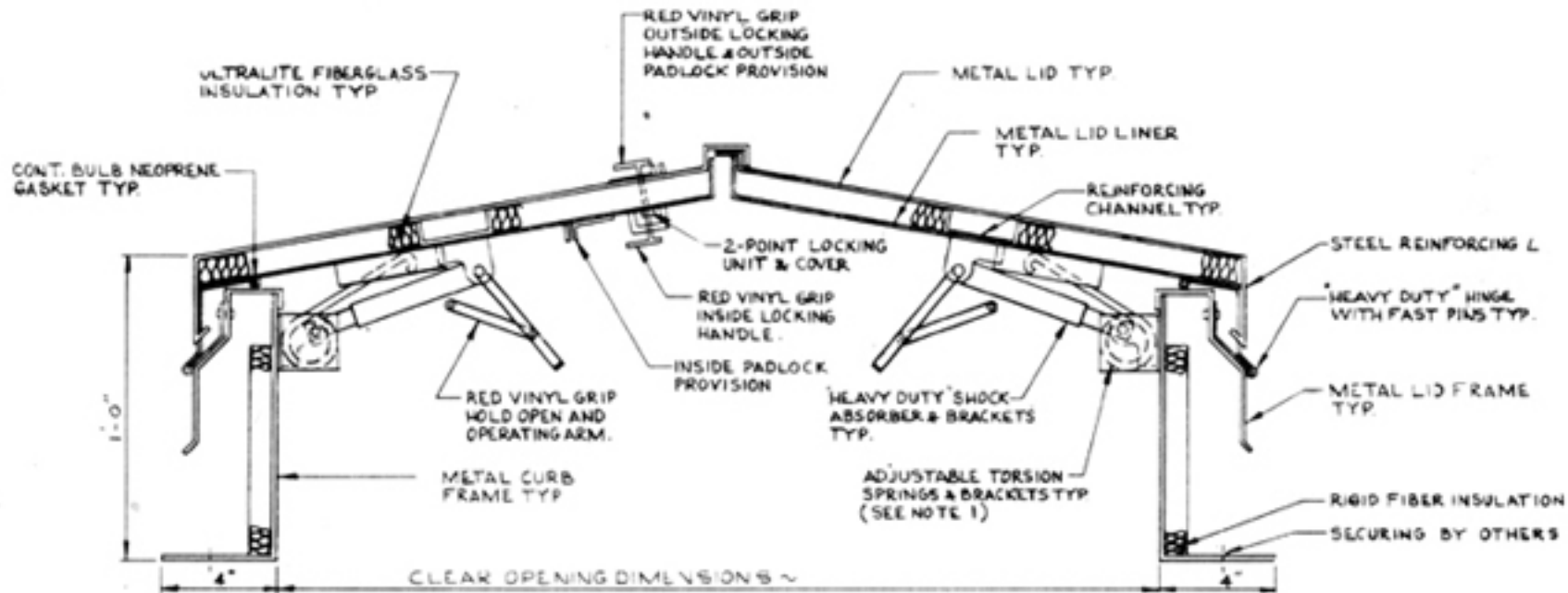


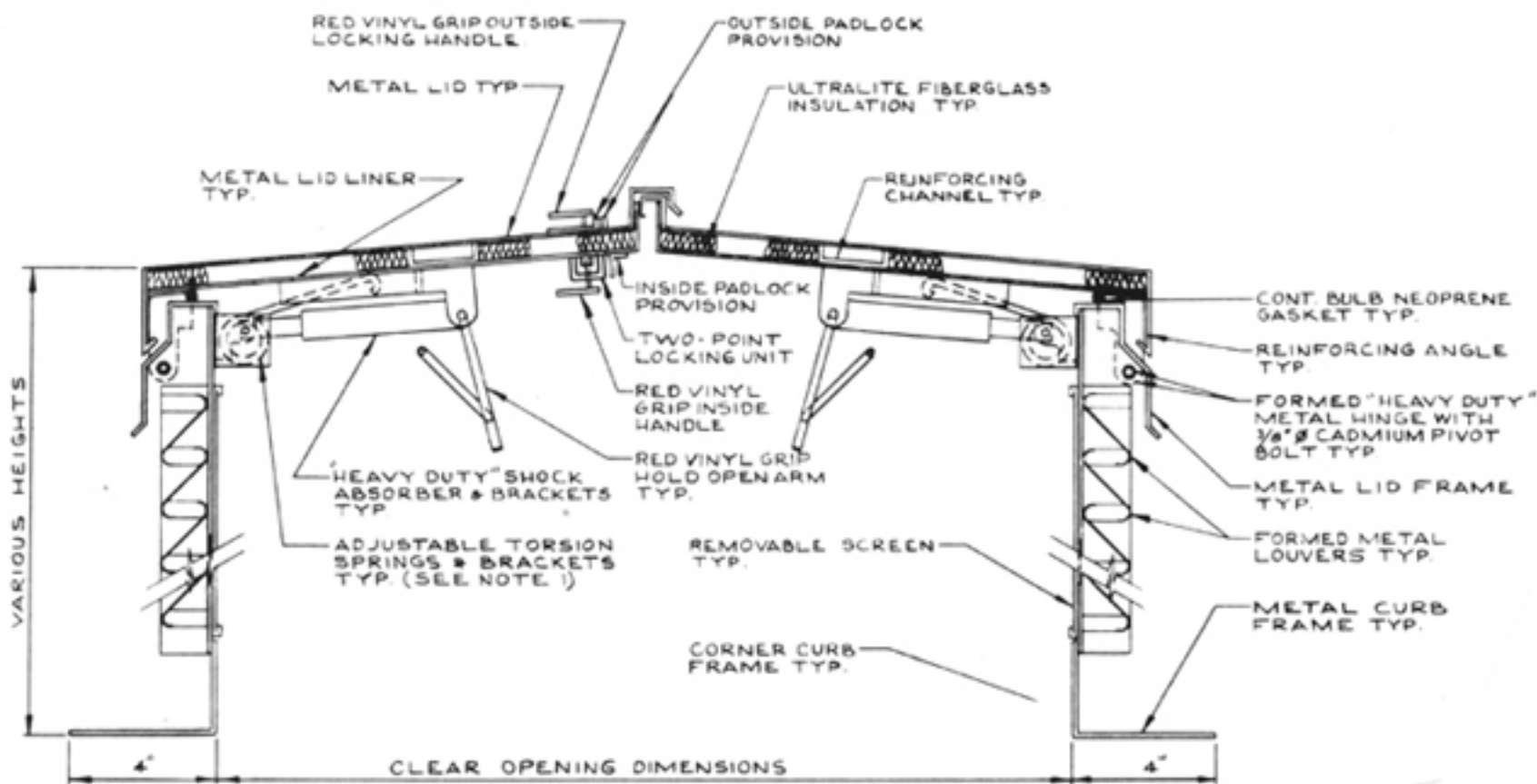
2" x 4" Wood Joists

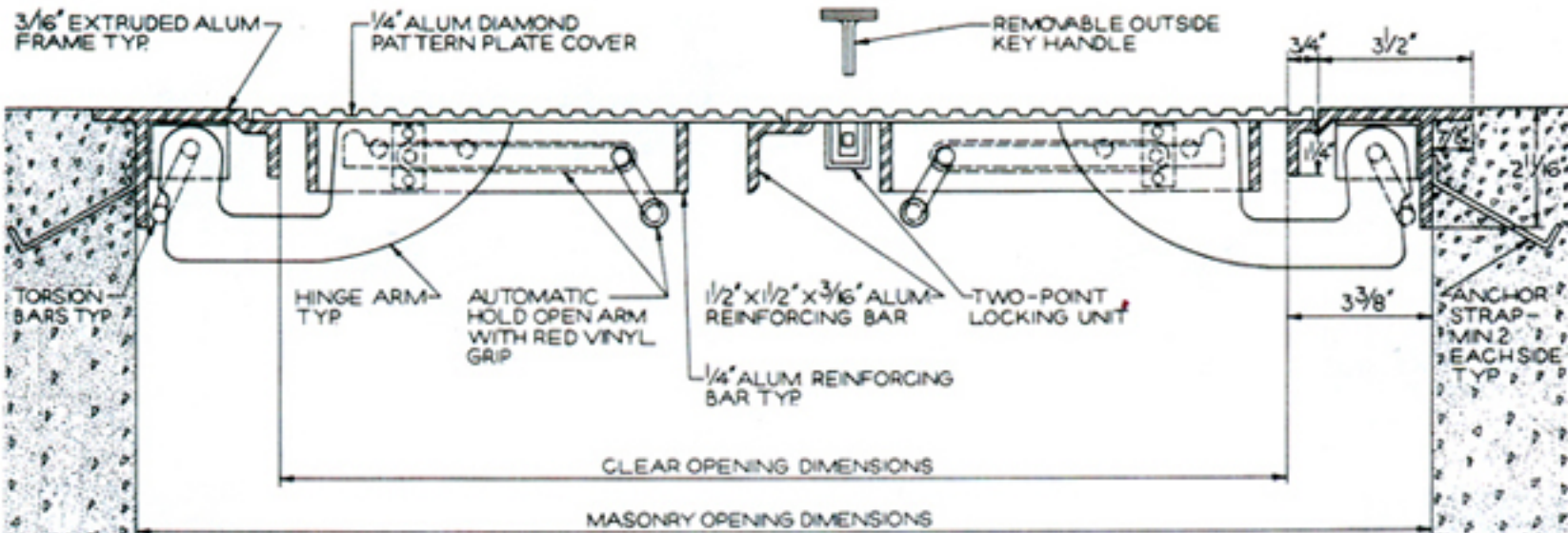


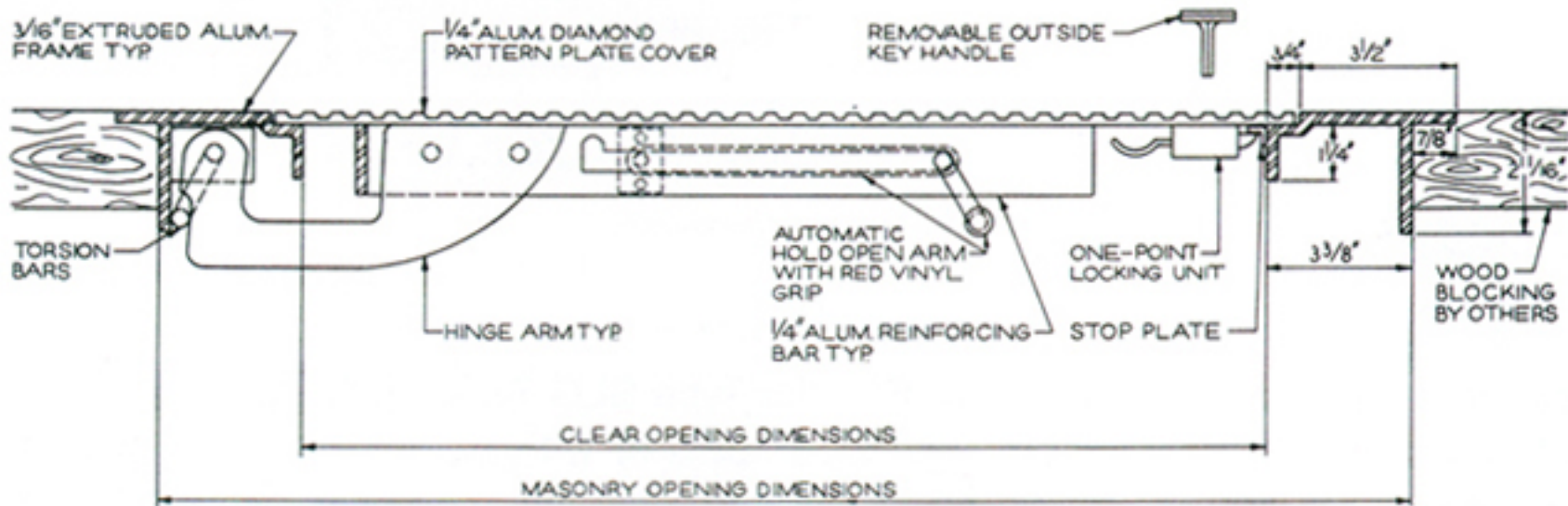
1/2" ϕ Hanger Rods











3" x 3" x 1/4" STEEL
ANGLE FRAME
TYP

1/4" STEEL DIAMOND
PATTERN PLATE COVER



REMOVABLE OUTSIDE
KEY HANDLE

HINGE ARM
TYP

ADJUSTABLE TORSION
SPRING & BRACKETS
TYP

1/2" x 1/2" x 3/16" ALUM
REINFORCING BAR

1/4" STEEL REINFORCING
BAR TYP

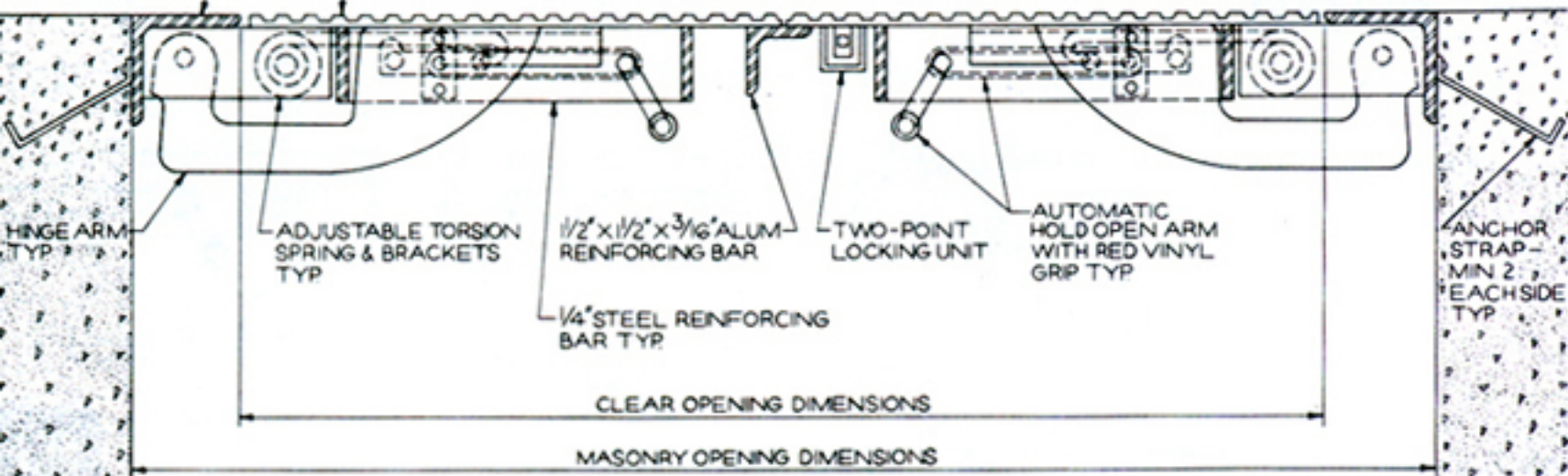
TWO-POINT
LOCKING UNIT

AUTOMATIC
HOLD OPEN ARM
WITH RED VINYL
GRIP TYP

ANCHOR
STRAP -
MIN 2
EACH SIDE
TYP

CLEAR OPENING DIMENSIONS

MASONRY OPENING DIMENSIONS



3"x3"x1/4" STEEL
ANGLE FRAME
TYP

1/4" STEEL DIAMOND
PATTERN PLATE COVER

REMOVABLE OUTSIDE
KEY HANDLE

CONT L 3 SIDES

HINGE ARM
TYP

ADJUSTABLE TORSION
SPRING & BRACKETS

AUTOMATIC
HOLD OPEN ARM
WITH RED VINYL
GRIP

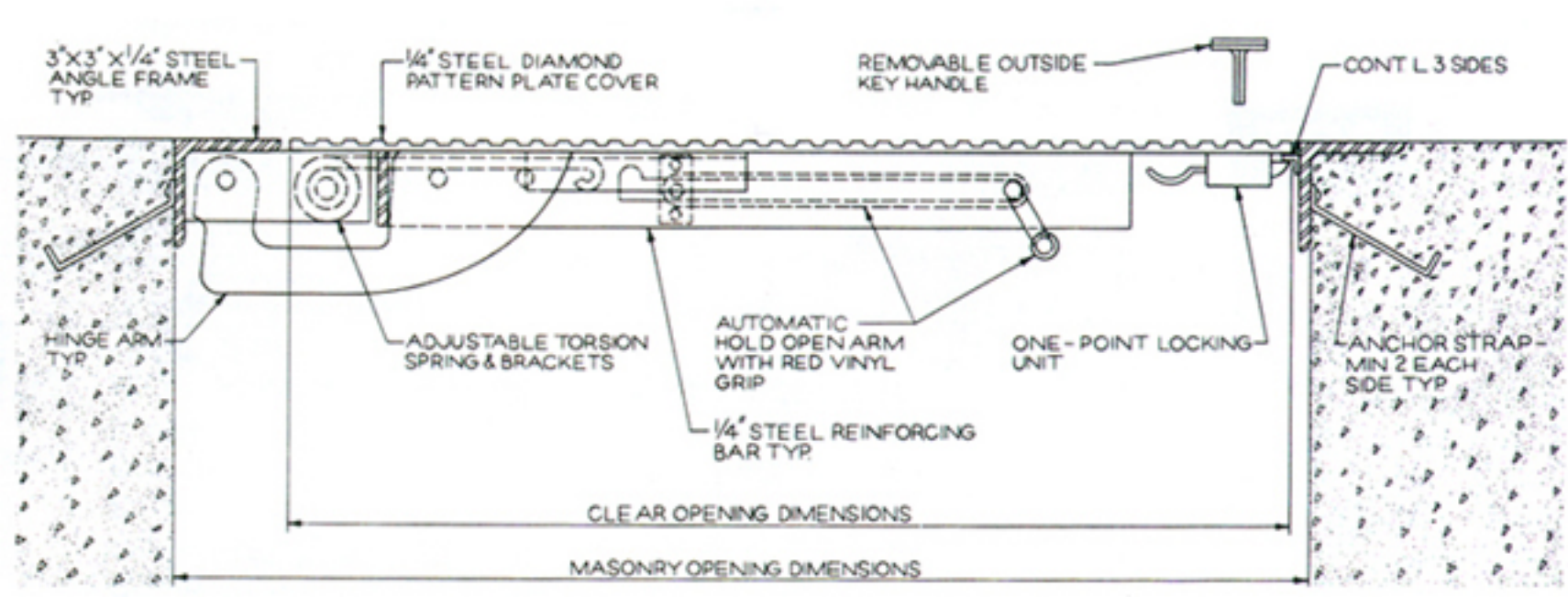
ONE-POINT LOCKING
UNIT

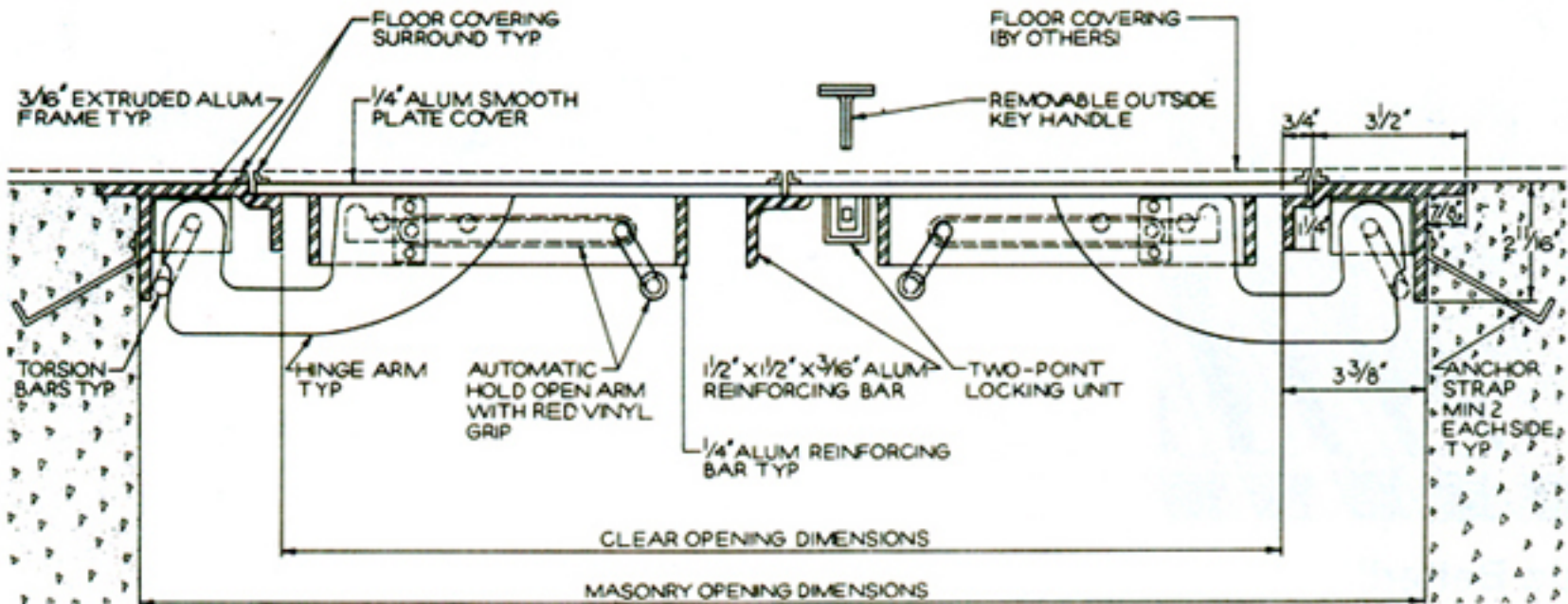
ANCHOR STRAP -
MIN 2 EACH
SIDE TYP

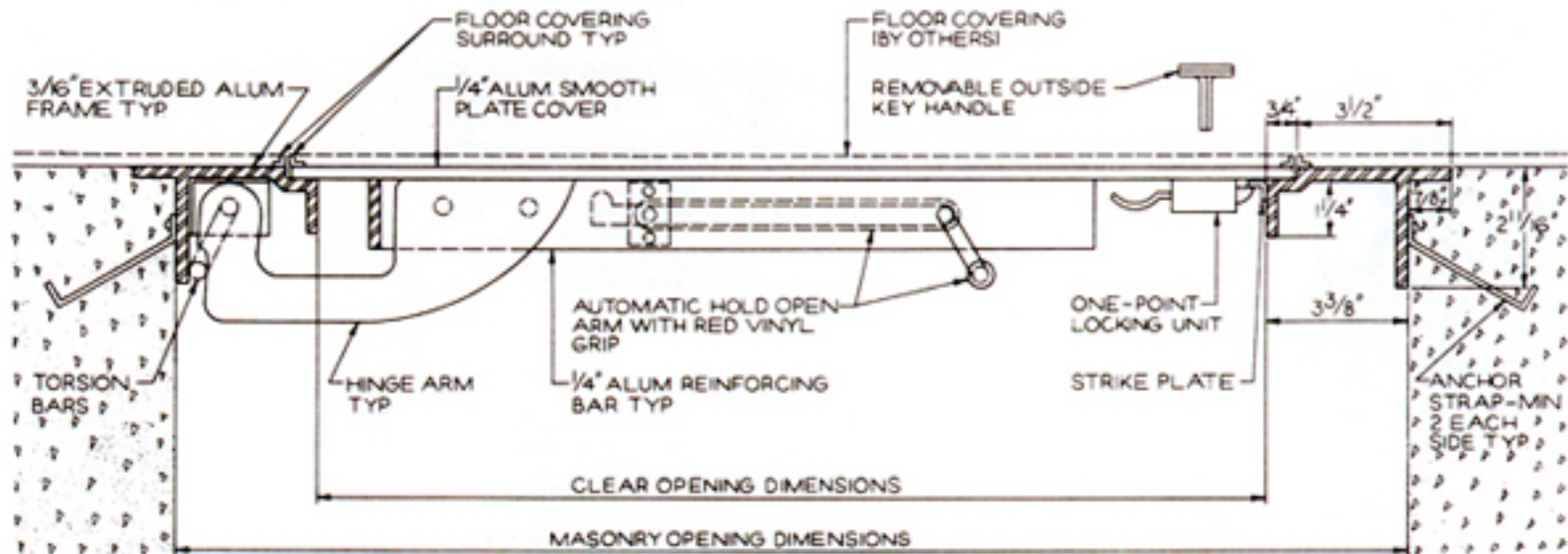
1/4" STEEL REINFORCING
BAR TYP

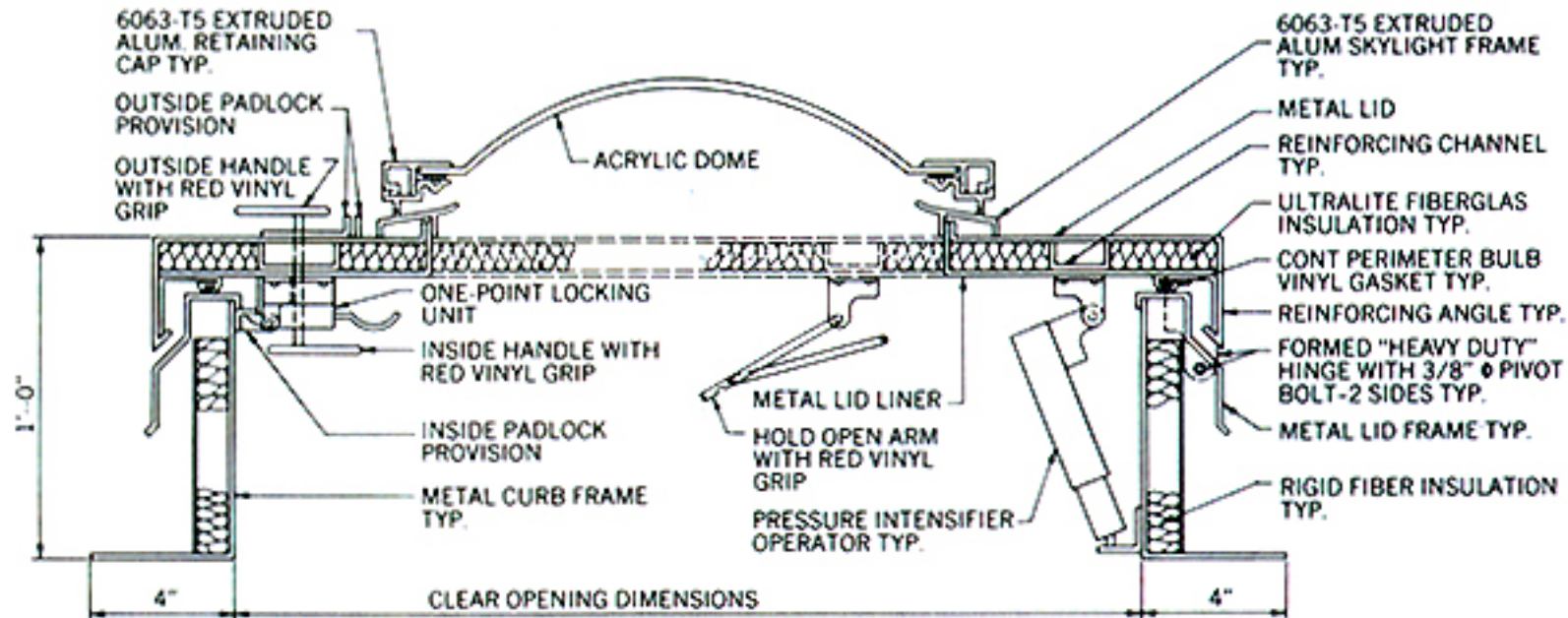
CLEAR OPENING DIMENSIONS

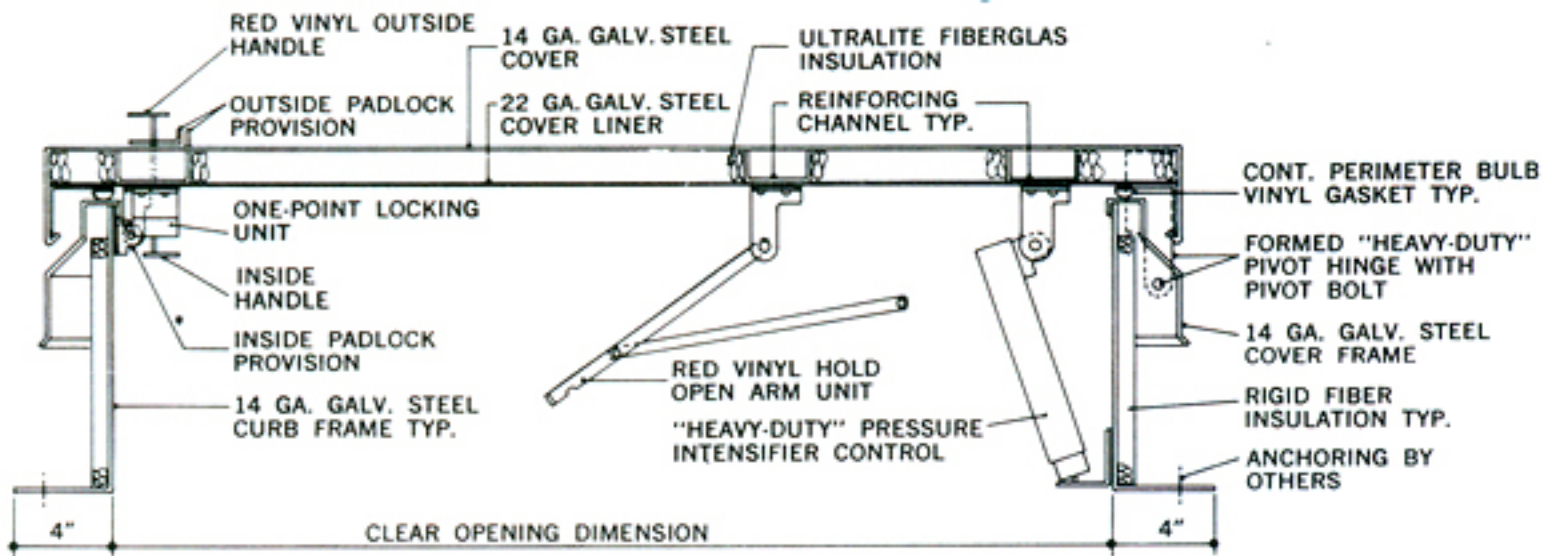
MASONRY OPENING DIMENSIONS

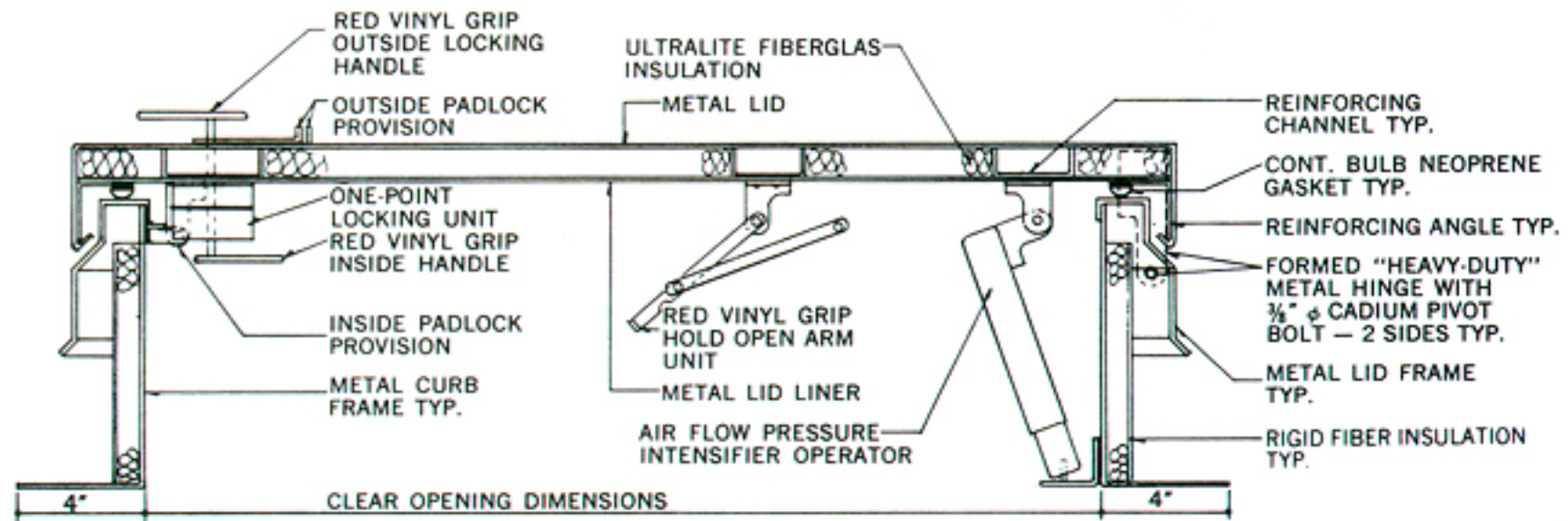


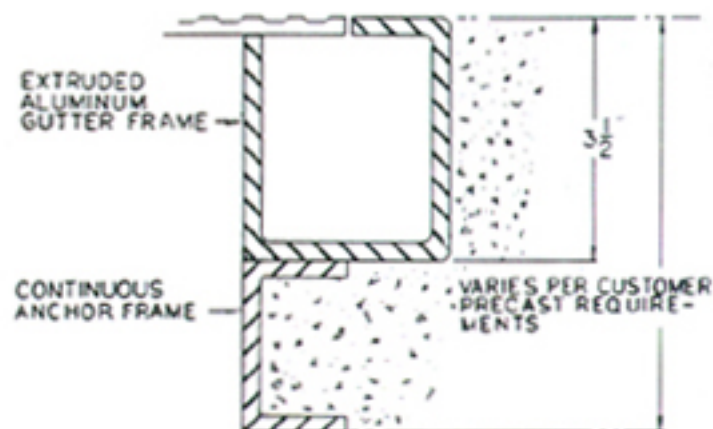
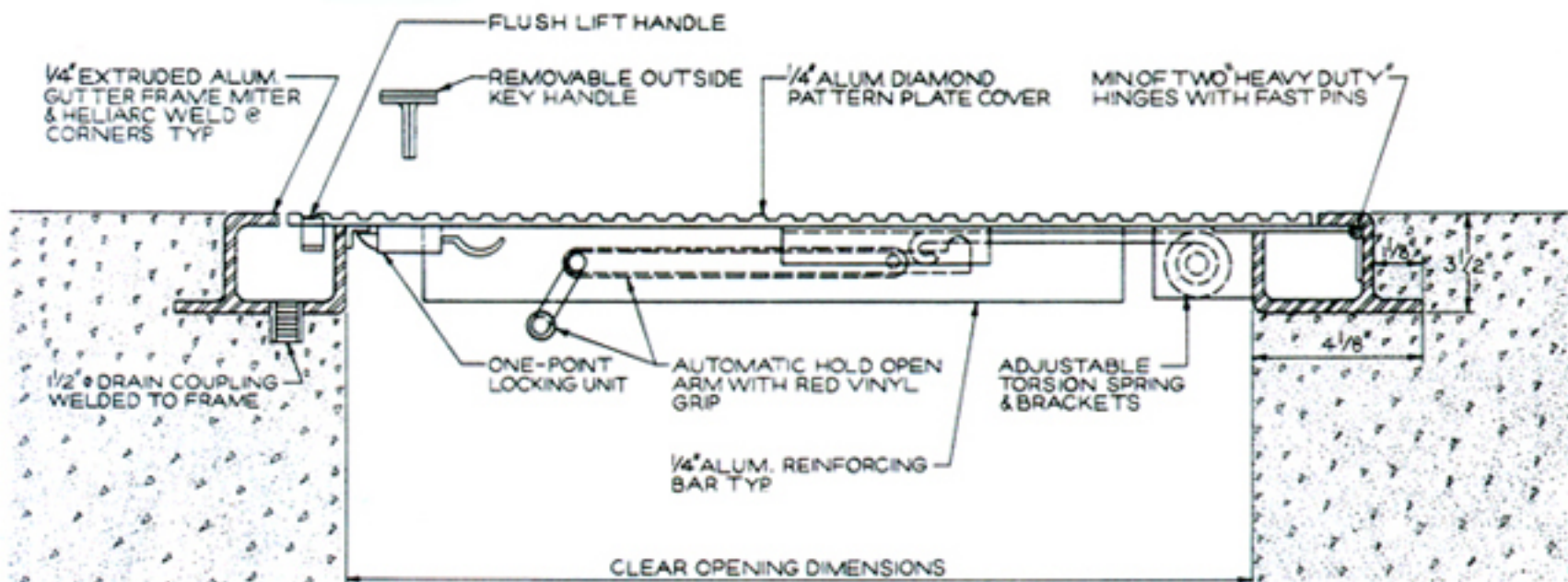


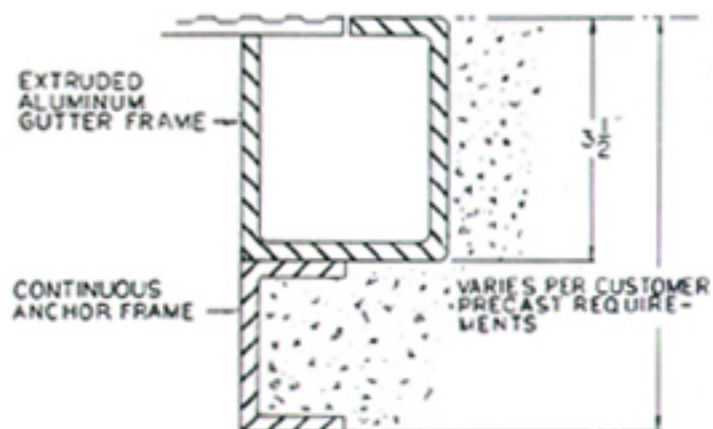
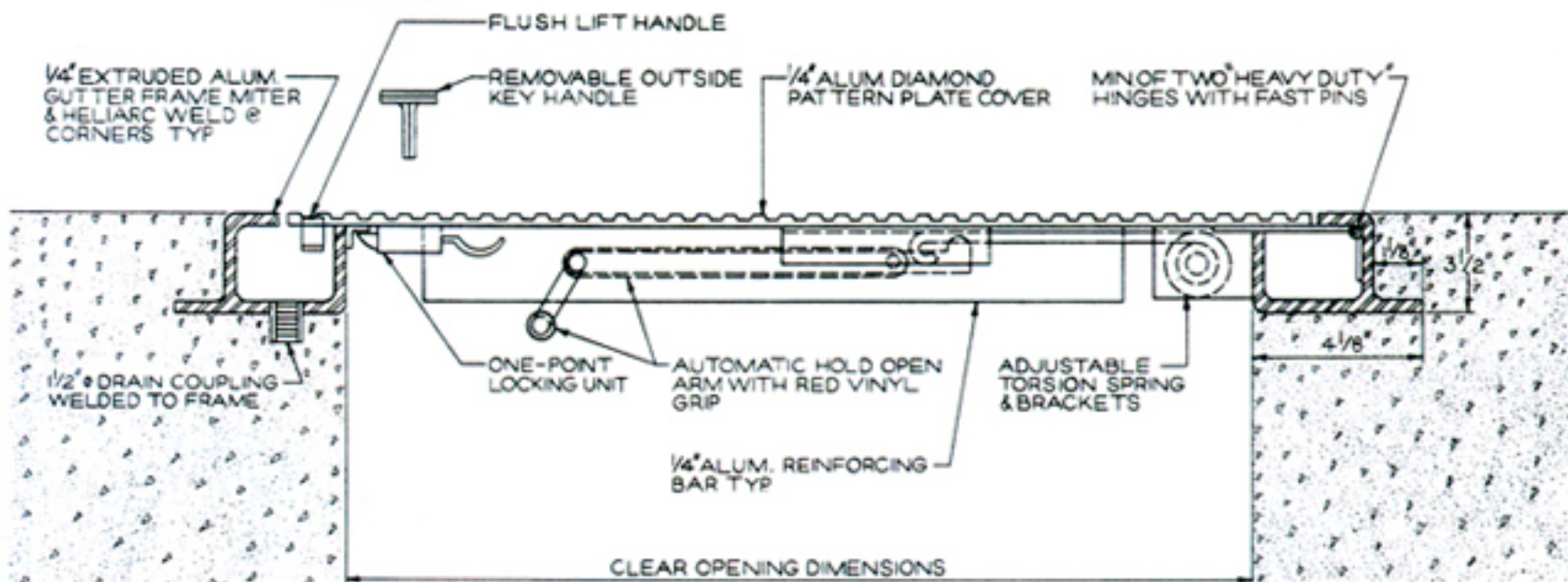


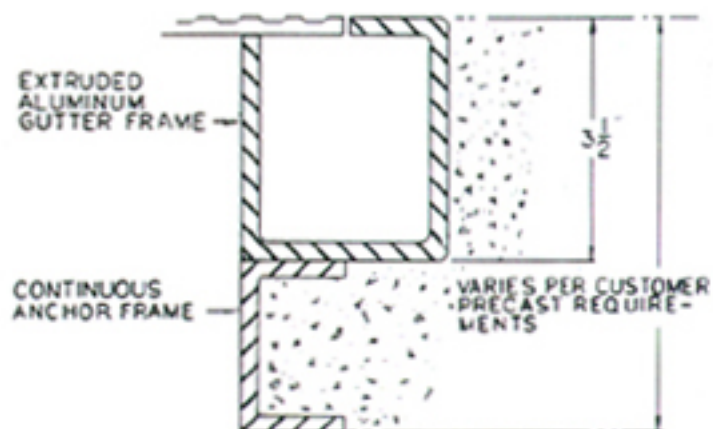
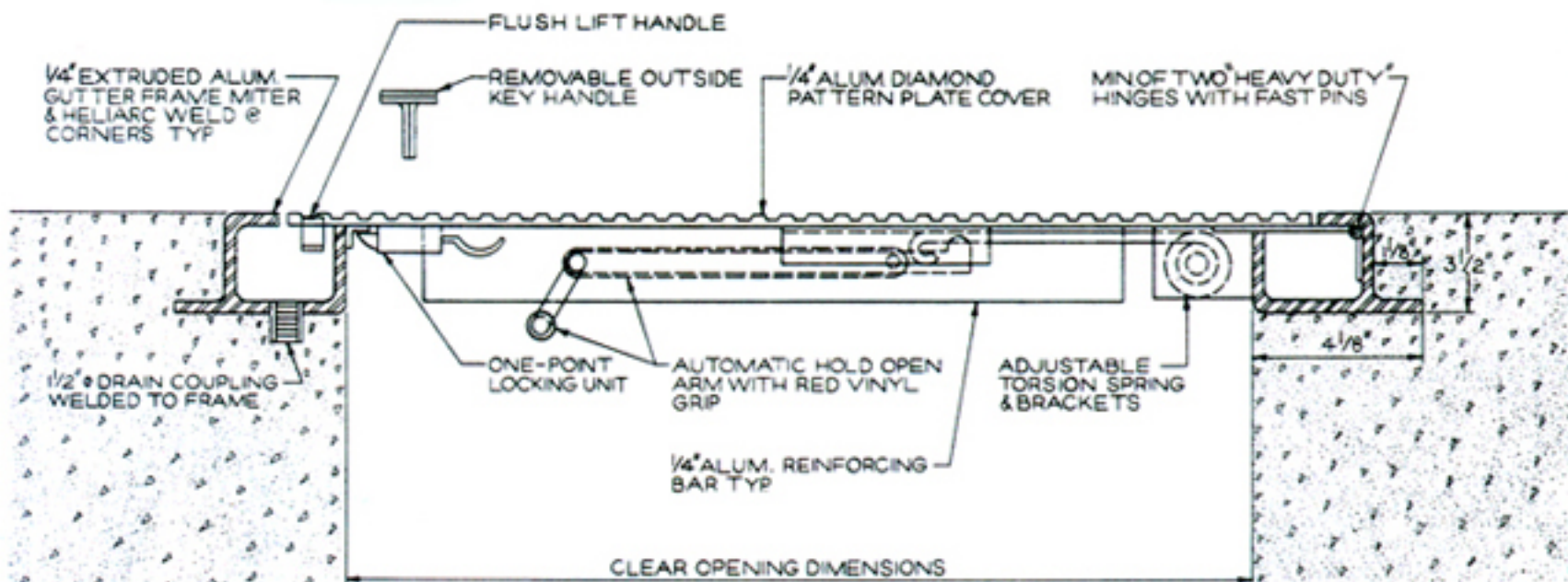


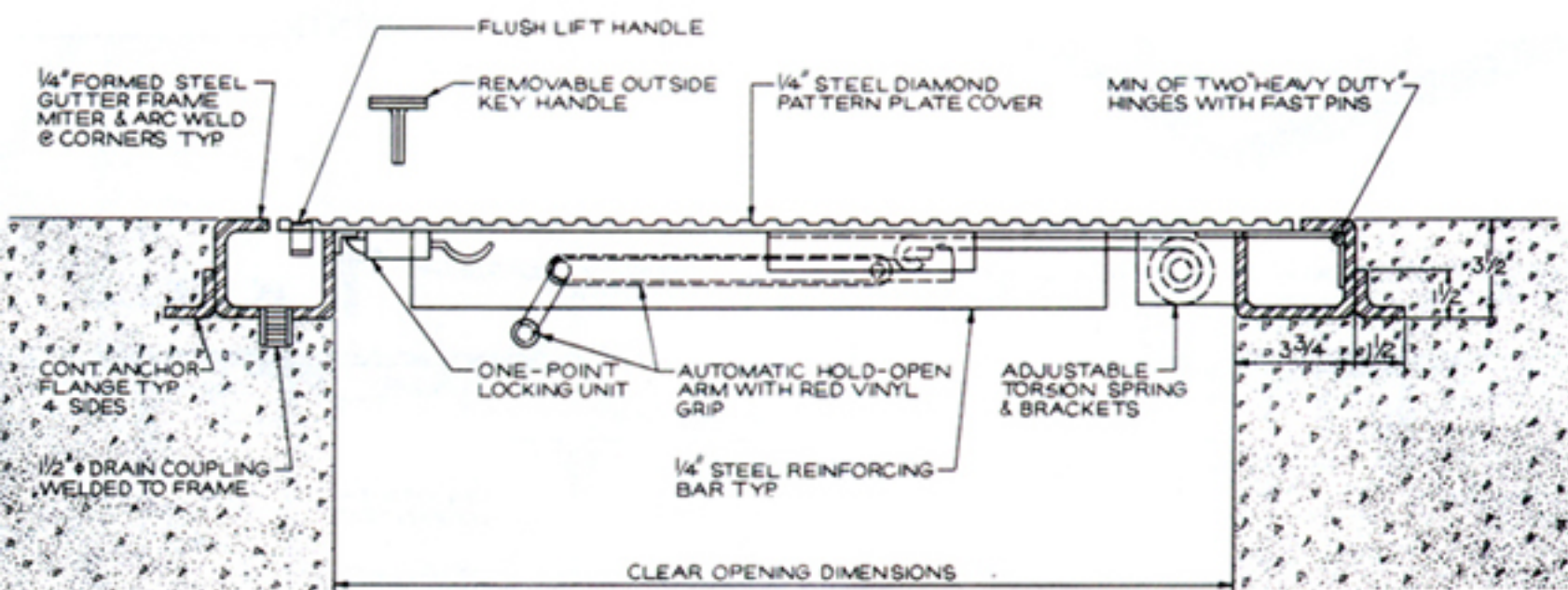


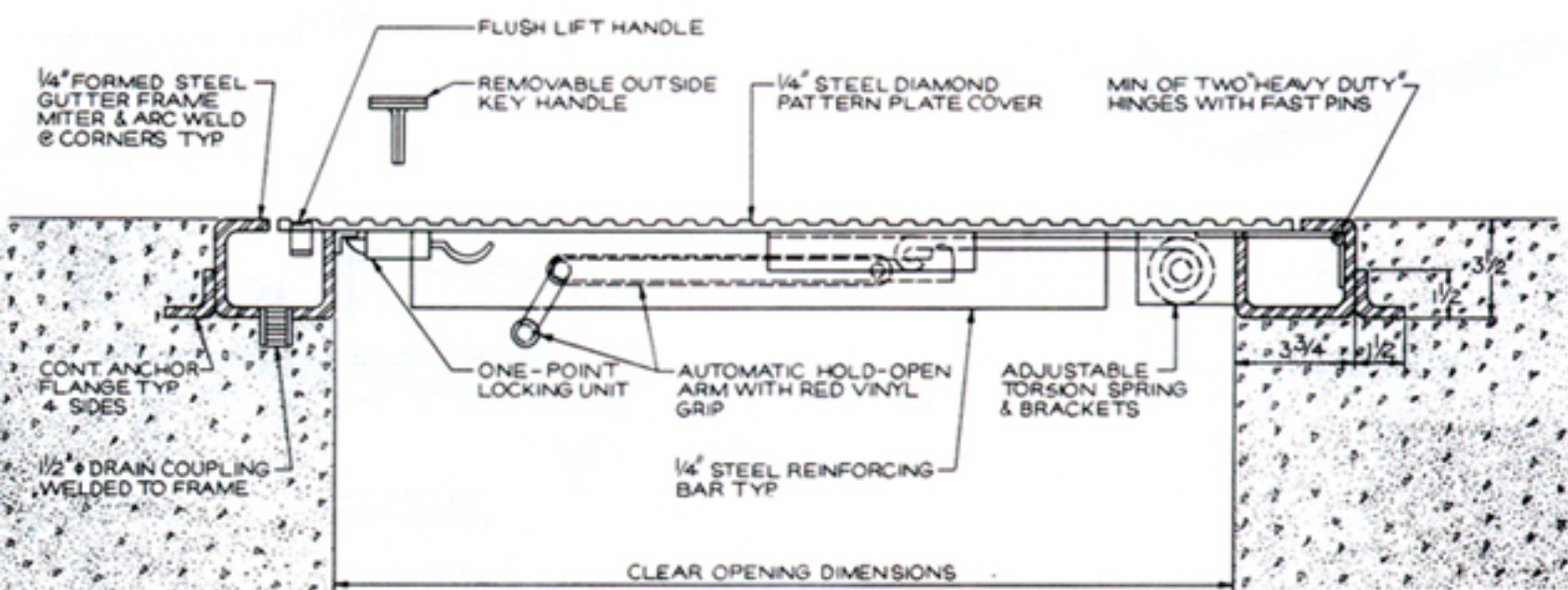


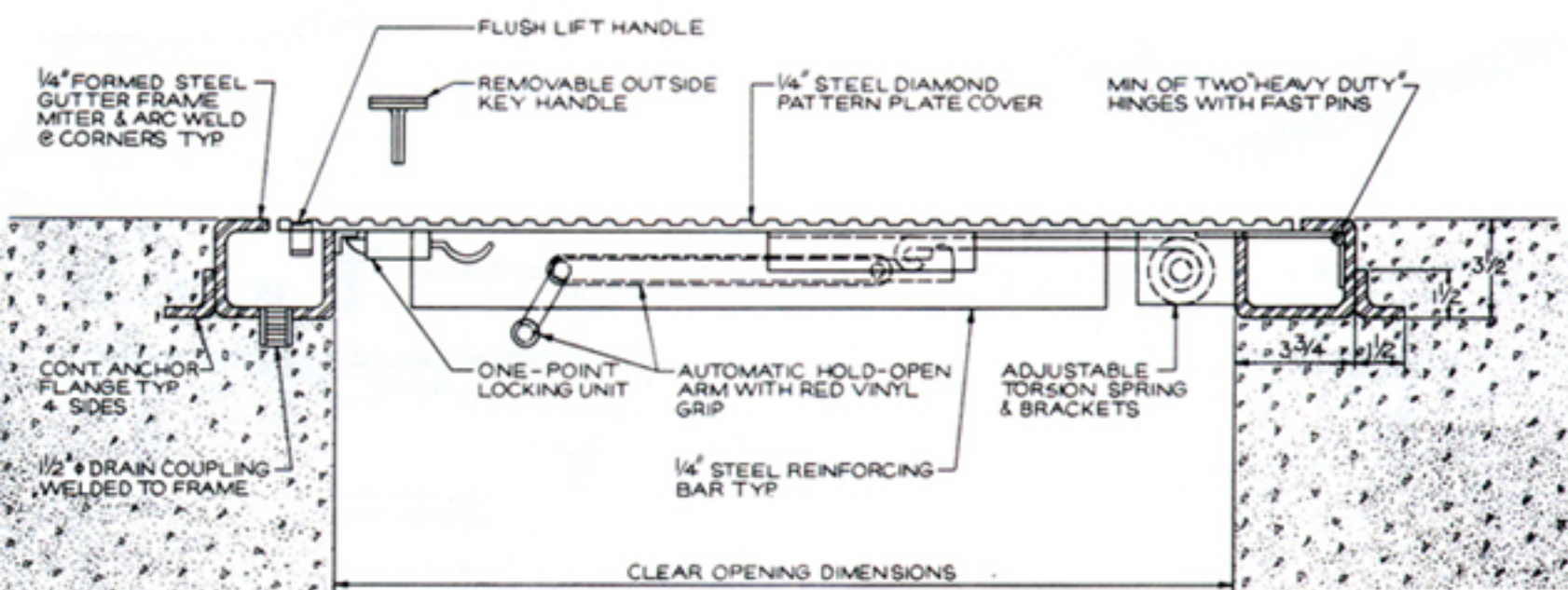


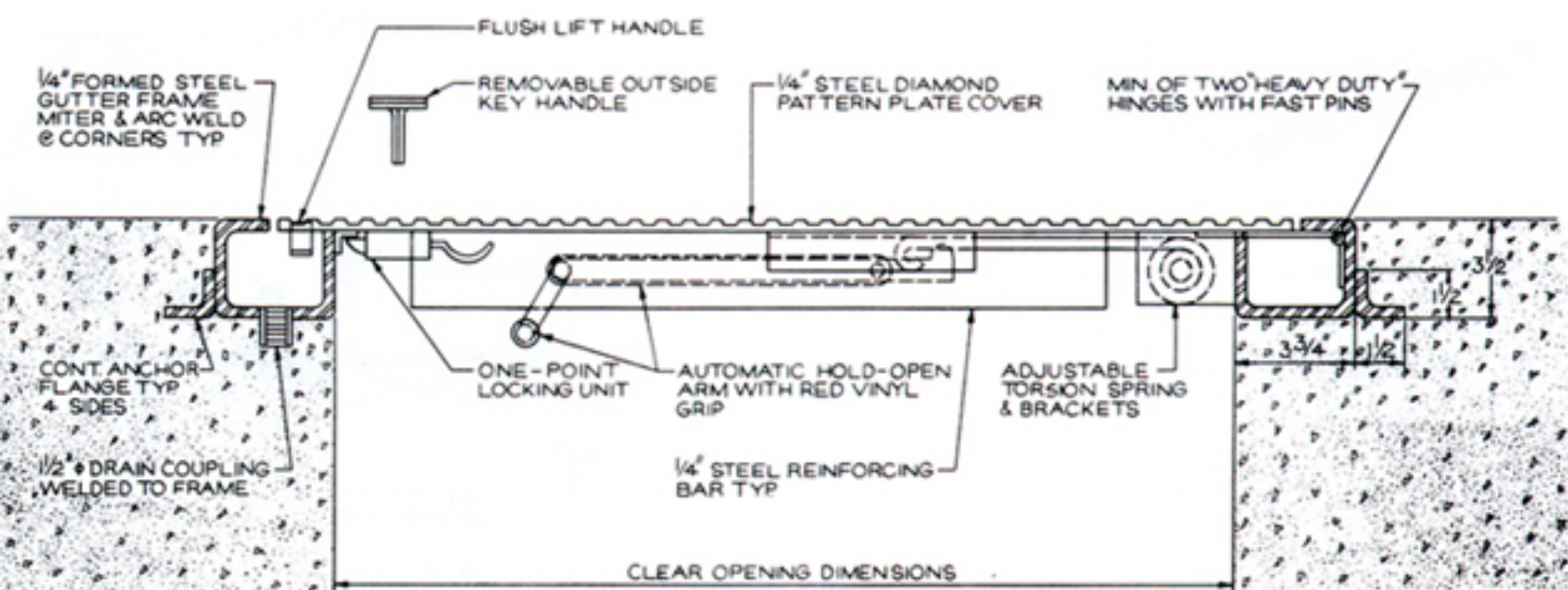


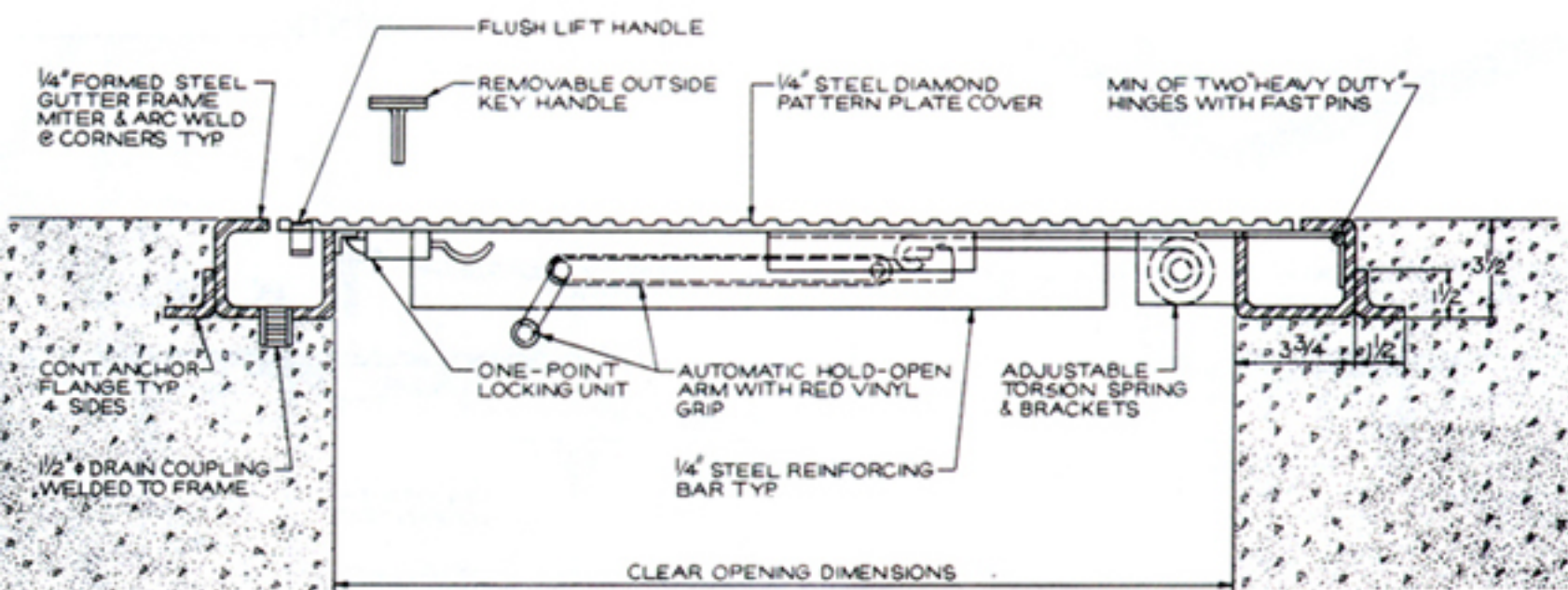






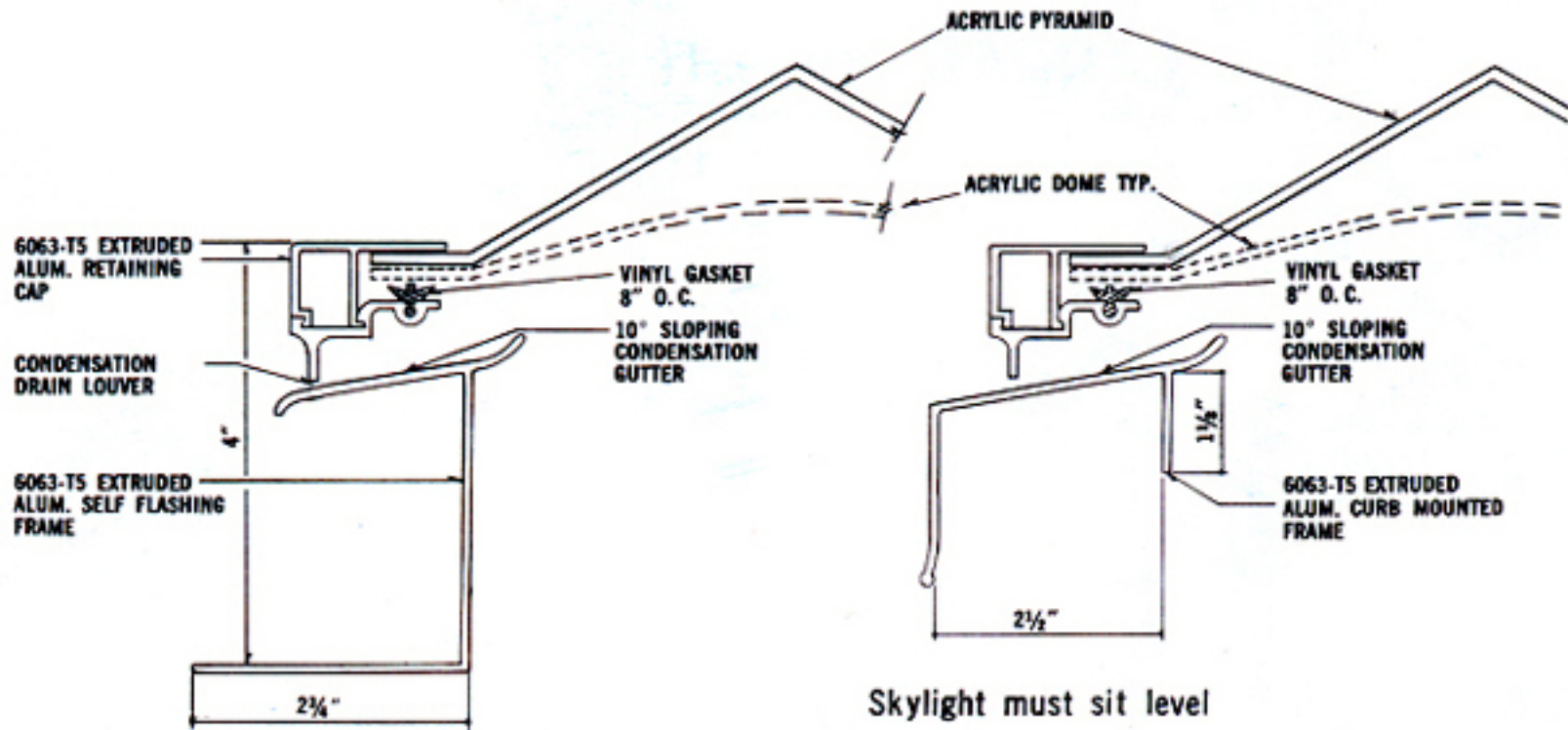




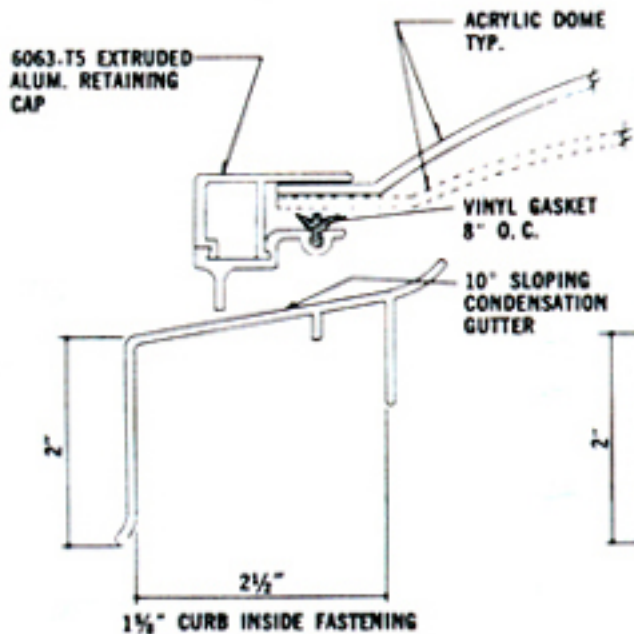


SELF-FLASHING

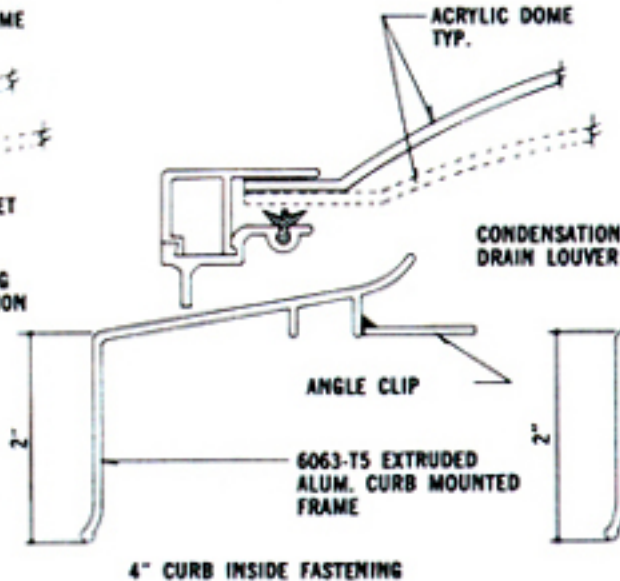
CURB MOUNTED



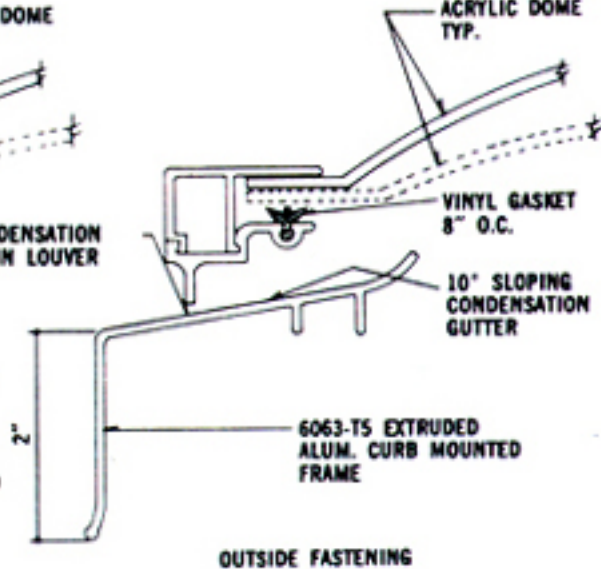
"A"

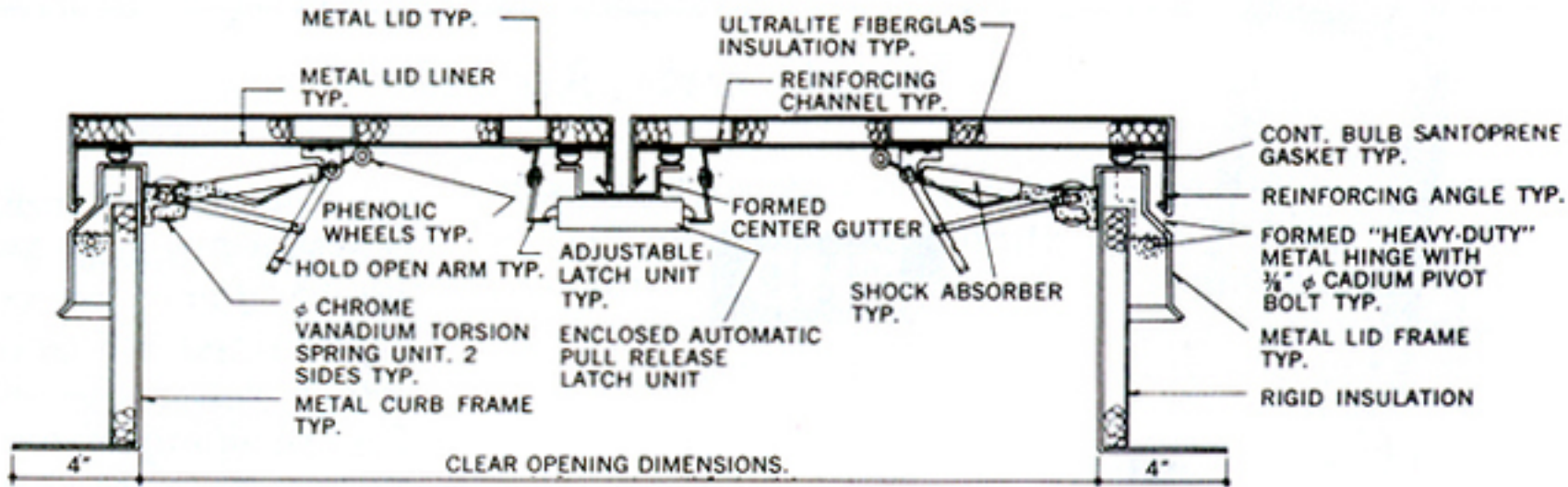


"B"



"C"





6063-T5 EXTRUDED
ALUM. SKYLIGHT FRAME
TYP.

METAL LID TYP.

ACRYLIC DOME
TYP.

6063-T5 EXTRUDED
ALUM. RETAINING CAP
TYP.

CONT. GASKET TYP.

PHENOLIC WHEEL
TYP.

HOLD OPEN ARM TYP.

CHROME
VANADIUM TORSION
SPRING UNIT TYP.

METAL CURB FRAME
TYP.

ADJUSTABLE
LATCH UNIT
TYP.

ENCLOSE AUTOMATIC
PULL RELEASE
LATCH UNIT

FORMED
CENTER
GUTTER

SHOCK ABSORBER
TYP.

FORMED "HEAVY-DUTY"
METAL HINGE WITH
 $\frac{3}{8}$ " ϕ CADIUM PIVOT
BOLT TYP.

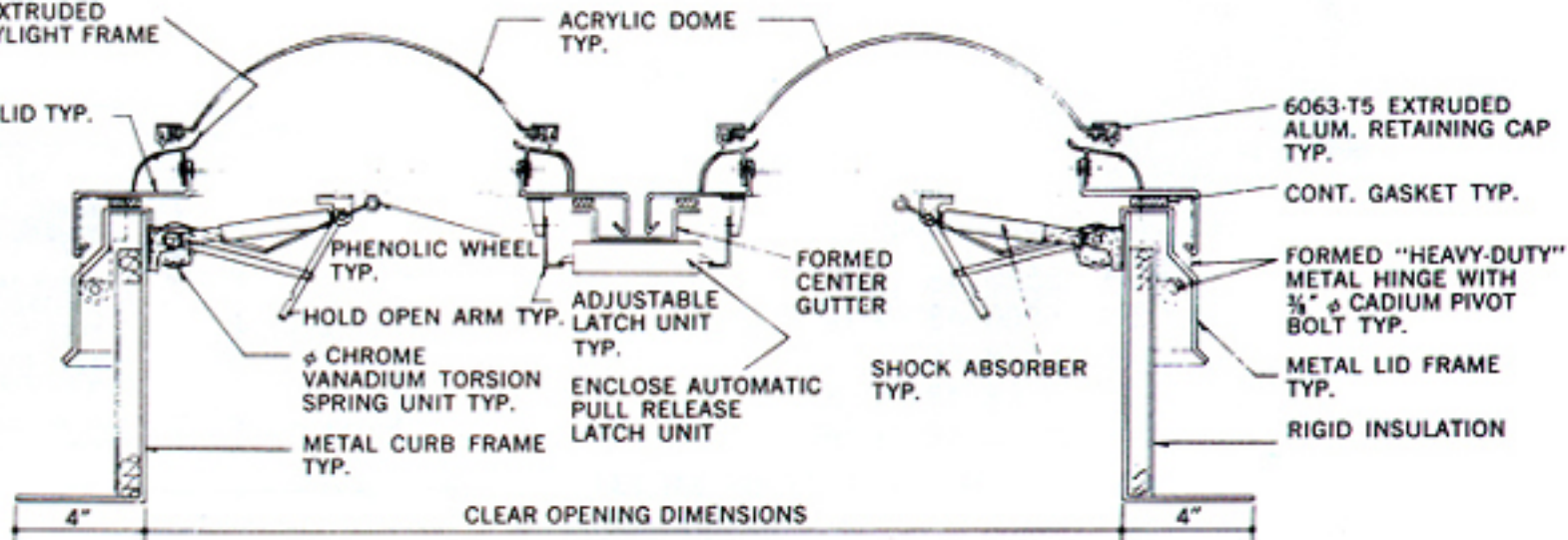
METAL LID FRAME
TYP.

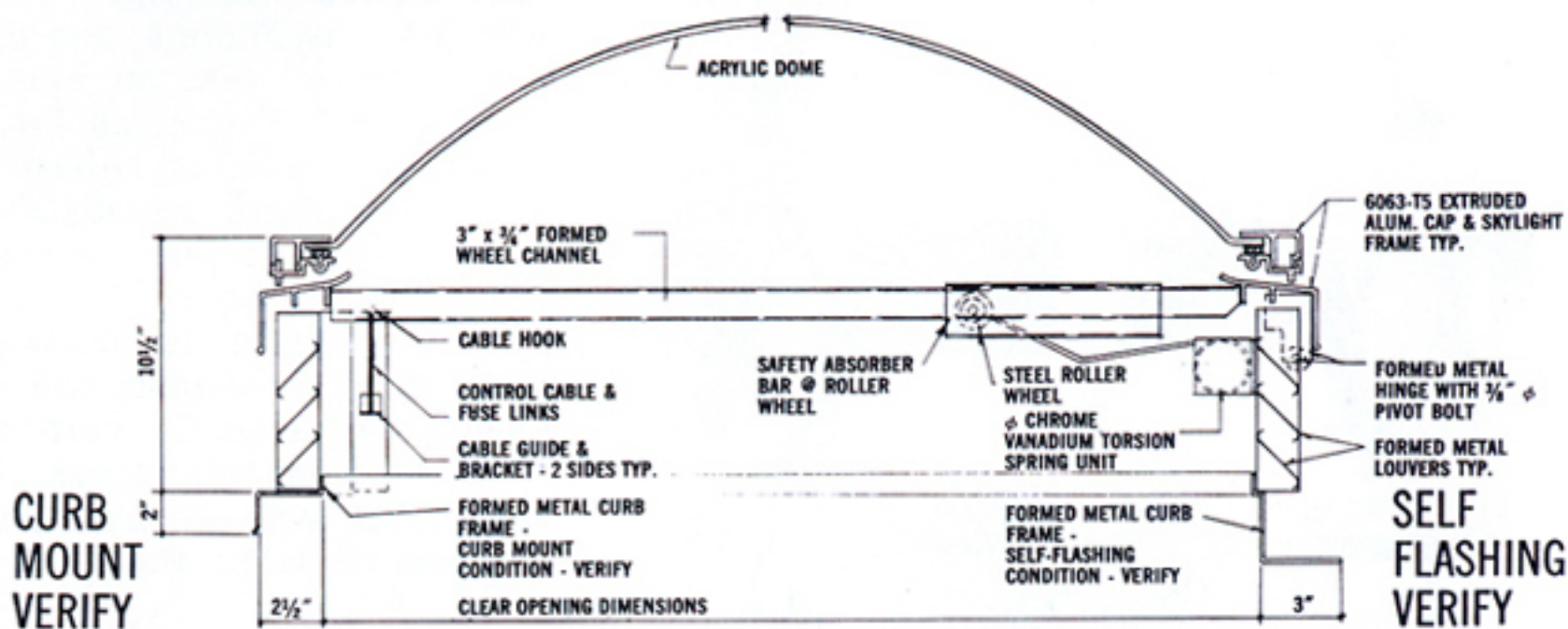
RIGID INSULATION

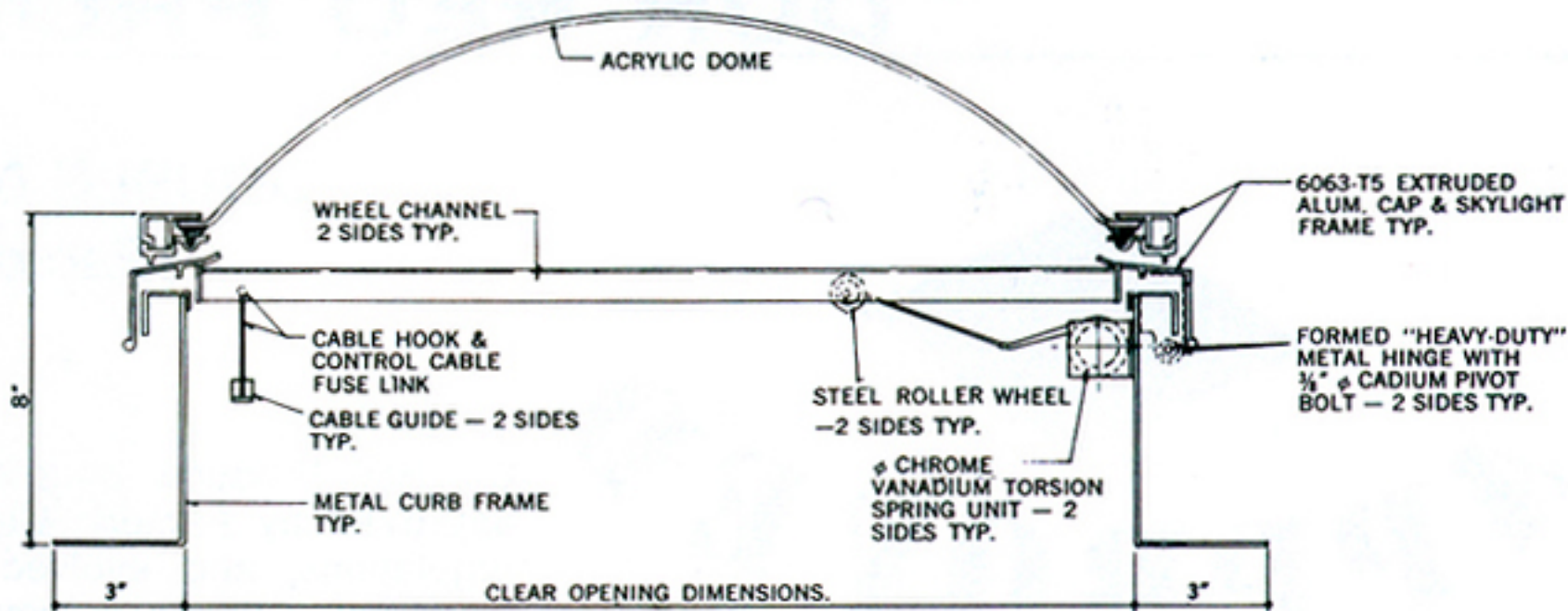
4"

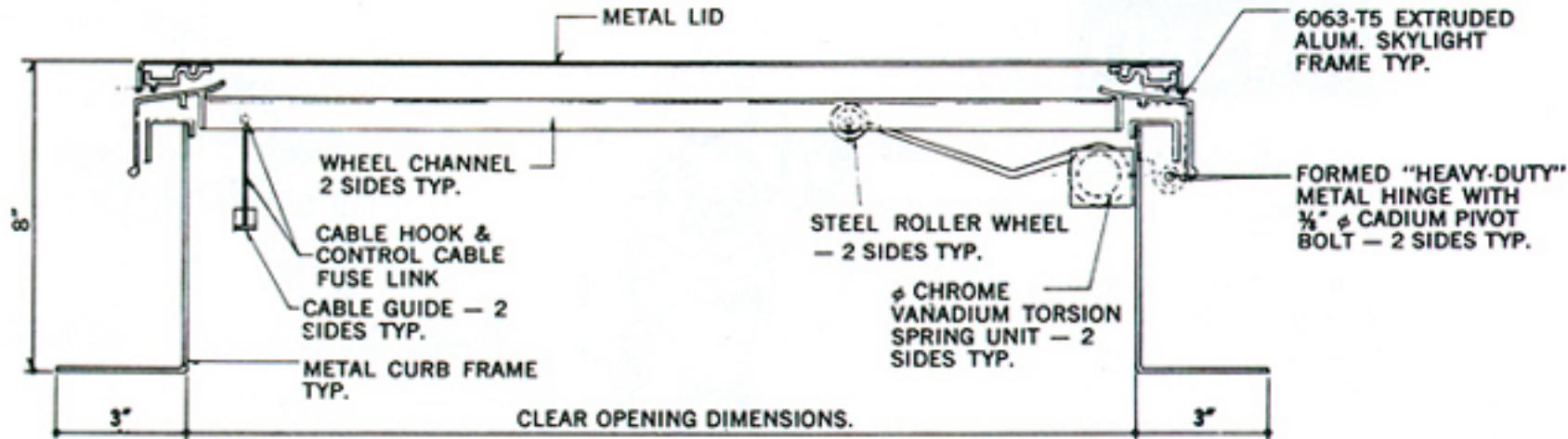
CLEAR OPENING DIMENSIONS

4"









CURB
MOUNT
VERIFY

