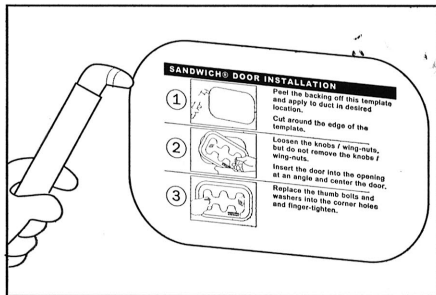


SANDWICH® DOOR INSTALLATION

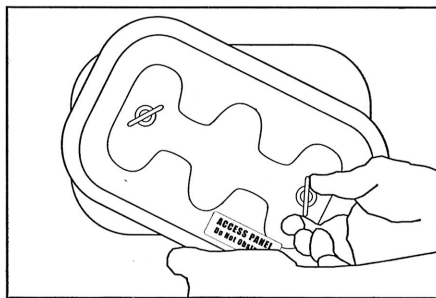
1



Peel the backing off this template and apply to duct in desired location.

Cut around the edge of the template.

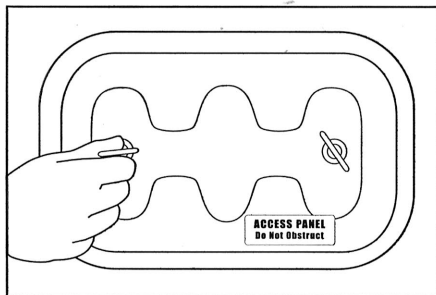
2



Loosen the knobs / wing-nuts, but do not remove the knobs / wing-nuts.

Insert the door into the opening at an angle and center the door.

3



Finger-tighten the knobs / wing-nuts. Do not over-tighten.

Warning: Improper installation may permit door to leak. Visually ensure that the gasket completely seals between the duct and the door.