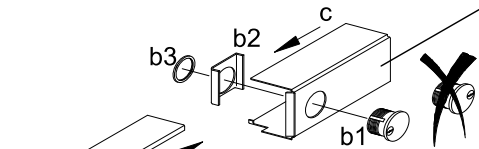


OPTIONS

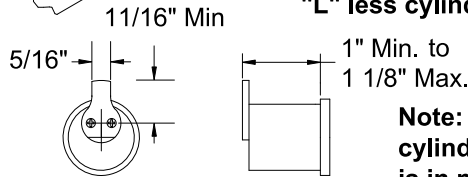
"CD" (CYLINDER DOGGING) OPTION:

Cylinder dogging installation instructions & cylinder specifications.

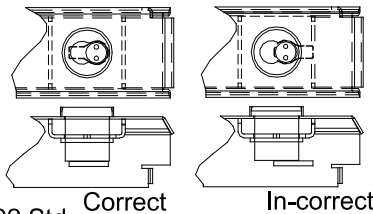
NOTE: Touch bar must be in dogged down position, to remove the rear filler panel.



Note: DORMA mortise cylinder supplied. To use other manufacture cylinders, "L" less cylinder is available.



Note: When using IC core cylinders, ensure that cam is in proper position prior to installing the new core.



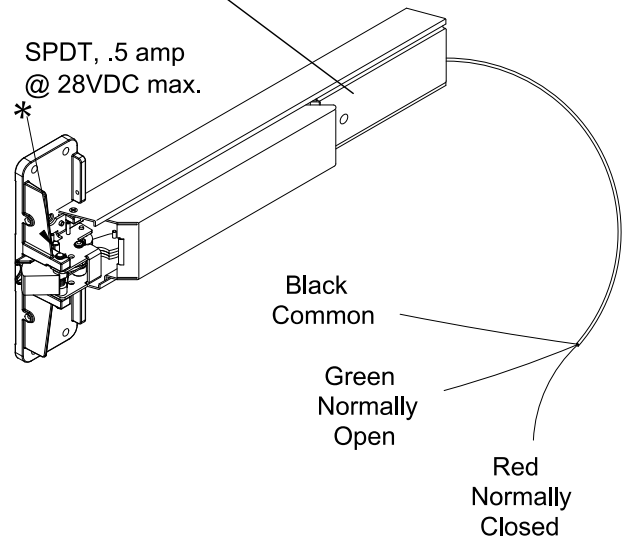
Useable Cams	
Arrow	001
Assa	Std. (Yale)
Best	C136
Corbin/Russwin	A02
Falcon	12667-3
DORMA	10
Ilco/Unican	SC1
Lori	SC1 4200-82-2002 Std.
Sargent	13-0664 or 13-0660
Schlage	001
Yale	2160

"LM" (LATCH MONITOR) OPTION:

Latch monitor: Monitors movement of latch bolt, with or without depressing of touch bar.
Can be wired normally open or normally closed.

NOTE: Touch bar must be in dogged down position, to remove the rear filler panel.

***NOTE:** Use caution when cutting touch bar and rail to length.



"BPA" & "BPAR" (ALARM) OPTION: (STANDARD INSTALLATION)

BPA: Battery powered alarm, sounds continuous or until disarmed.

BPAR: Battery powered alarm, sounds for 4 minutes, automatically resets.

"Alarm mode set at factory."

SIZE A:

Will fit 48" (1219 mm) door opening without cutting.
Can be cut to fit a 39" (991 mm) minimum door opening.

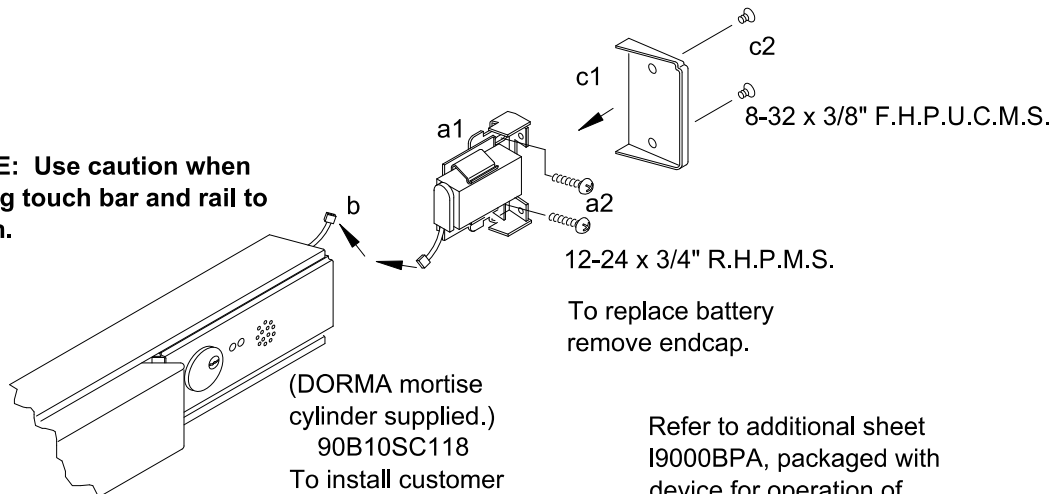
SIZE B:

Will fit 36" (914 mm) door opening without cutting.
Can be cut to fit a 33" (838 mm) minimum door opening.

SIZE C:

Will fit 36" (914 mm) door opening without cutting.
Can be cut to fit a 30" (762 mm) minimum door opening.

***NOTE:** Use caution when cutting touch bar and rail to length.



(DORMA mortise cylinder supplied.)
90B10SC118
To install customer supplied cylinder, see cylinder dogging option at top of page.

To replace battery remove endcap.

Refer to additional sheet I9000BPA, packaged with device for operation of alarmed exit device.