

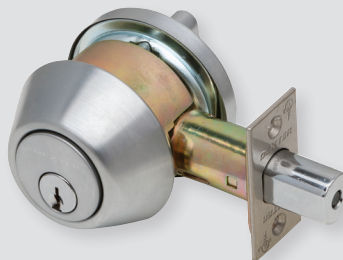
**DEXTER®**  
COMMERCIAL HARDWARE

# Full line catalog

Locks, closers, and exits



# Cylindrical locks and deadbolts



# C1000 Series

## Grade 1 cylindrical locks



### Specifications

- Grade 1, UL listed 3 hour
- 1 <sup>3</sup>/<sub>8</sub>" to 2" door range standard
- All functions include 1 <sup>1</sup>/<sub>8</sub>" x 2 <sup>1</sup>/<sub>4</sub>" square-corner beveled latch with 2 <sup>3</sup>/<sub>4</sub>" backset and ANSI 1 <sup>1</sup>/<sub>4</sub>" x 4 <sup>7</sup>/<sub>8</sub>" curved lip strike
- Accommodate Schlage C cylinders are 6-pin cylinders keyed 6, keyed different
- Accommodates SFIC to accept 6-pin/7-pin

### Locksets

Product description	Lever feature	Function	Trim	Finish	Cylinder
C1000-PASS-R-626	Clutching	Passage (F75)	Regular	626	N/A
C1000-PASS-R-613	Clutching	Passage (F75)	Regular	613	N/A
C1000-PASS-C-626	Clutching	Passage (F75)	Curved	626	N/A
C1000-PASS-C-613	Clutching	Passage (F75)	Curved	613	N/A
C1000-PRIV-R-626	Clutching	Privacy (F76)	Regular	626	N/A
C1000-PRIV-R-613	Clutching	Privacy (F76)	Regular	613	N/A
C1000-PRIV-C-626	Clutching	Privacy (F76)	Curved	626	N/A
C1000-PRIV-C-613	Clutching	Privacy (F76)	Curved	613	N/A
C1000-ASYL-R-626-KDC	Clutching	Asylum (F87)	Regular	626	6-pin, Schlage C, KD
C1000-ASYL-C-626-KDC	Clutching	Asylum (F87)	Curved	626	6-pin, Schlage C, KD
C1000-ENTR-R-626-KDC	Clutching	Entry/Office (F109)	Regular	626	6-pin, Schlage C, KD
C1000-NC-ENTR-R-626-KDC	Non-clutching	Entry/Office (F109)	Regular	626	6-pin, Schlage C, KD
C1000-ENTR-R-613-KDC	Clutching	Entry/Office (F109)	Regular	613	6-pin, Schlage C, KD
C1000-ENTR-R-626-SFIC	Clutching	Entry/Office (F109)	Regular	626	Less SFIC
C1000-NC-ENTR-R-626-SFIC	Non-clutching	Entry/Office (F109)	Regular	626	Less SFIC
C1000-ENTR-R-613-SFIC	Clutching	Entry/Office (F109)	Regular	613	Less SFIC
C1000-ENTR-C-626-KDC	Clutching	Entry/Office (F109)	Curved	626	6-pin, Schlage C, KD
C1000-ENTR-C-613-KDC	Clutching	Entry/Office (F109)	Curved	613	6-pin, Schlage C, KD
C1000-ENTR-C-626-SFIC	Clutching	Entry/Office (F109)	Curved	626	Less SFIC
C1000-ENTR-C-613-SFIC	Clutching	Entry/Office (F109)	Curved	613	Less SFIC
C1000-CLRM-R-626-KDC	Clutching	Classroom (F84)	Regular	626	6-pin, Schlage C, KD
C1000-CLRM-R-613-KDC	Clutching	Classroom (F84)	Regular	613	6-pin, Schlage C, KD
C1000-CLRM-R-626-SFIC	Clutching	Classroom (F84)	Regular	626	Less SFIC
C1000-CLRM-R-613-SFIC	Clutching	Classroom (F84)	Regular	613	Less SFIC
C1000-CLRM-C-626-KDC	Clutching	Classroom (F84)	Curved	626	6-pin, Schlage C, KD
C1000-CLRM-C-613-KDC	Clutching	Classroom (F84)	Curved	613	6-pin, Schlage C, KD
C1000-CLRM-C-626-SFIC	Clutching	Classroom (F84)	Curved	626	Less SFIC
C1000-CLRM-C-613-SFIC	Clutching	Classroom (F84)	Curved	613	Less SFIC



## C1000 Series Grade 1 cylindrical locks

### Locksets

Product description	Lever feature	Function	Trim	Finish	Cylinder
C1000-CSEC-R-626-KDC	Clutching	Classroom Security (F88)	Regular	626	6-pin, Schlage C, KD
C1000-CSEC-R-613-KDC	Clutching	Classroom Security (F88)	Regular	613	6-pin, Schlage C, KD
C1000-CSEC-R-626-SFIC	Clutching	Classroom Security (F88)	Regular	626	Less SFIC
C1000-CSEC-R-613-SFIC	Clutching	Classroom Security (F88)	Regular	613	Less SFIC
C1000-CSEC-C-626-KDC	Clutching	Classroom Security (F88)	Curved	626	6-pin, Schlage C, KD
C1000-CSEC-C-613-KDC	Clutching	Classroom Security (F88)	Curved	613	6-pin, Schlage C, KD
C1000-CSEC-C-626-SFIC	Clutching	Classroom Security (F88)	Curved	626	Less SFIC
C1000-CSEC-C-613-SFIC	Clutching	Classroom Security (F88)	Curved	613	Less SFIC
C1000-STRM-R-626-KDC	Clutching	Storeroom (F86)	Regular	626	6-pin, Schlage C, KD
C1000-NC-STRM-R-626-KDC	Non-clutching	Storeroom (F86)	Regular	626	6-pin, Schlage C, KD
C1000-STRM-R-613-KDC	Clutching	Storeroom (F86)	Regular	613	6-pin, Schlage C, KD
C1000-STRM-R-626-SFIC	Clutching	Storeroom (F86)	Regular	626	Less SFIC
C1000-NC-STRM-R-626-SFIC	Non-clutching	Storeroom (F86)	Regular	626	Less SFIC
C1000-STRM-R-613-SFIC	Clutching	Storeroom (F86)	Regular	613	Less SFIC
C1000-STRM-C-626-KDC	Clutching	Storeroom (F86)	Curved	626	6-pin, Schlage C, KD
C1000-STRM-C-613-KDC	Clutching	Storeroom (F86)	Curved	613	6-pin, Schlage C, KD
C1000-STRM-C-626-SFIC	Clutching	Storeroom (F86)	Curved	626	Less SFIC
C1000-STRM-C-613-SFIC	Clutching	Storeroom (F86)	Curved	613	Less SFIC



Regular lever



Curved lever



613



626

### Accessories

**Latches:** All latches are square corner with 1 1/8" x 2 1/4" faceplate. Grade 1 latches are square corner with 2 3/8" and 2 3/4" backsets available. Products with "234" in the description represent a 2 3/4" backset.

Product description	Function	Backset	Latch type	Finish
C1000-SL-630	Passage, Privacy	2 3/8"	Springlatch	630
C1000-SL-234-630	Passage, Privacy	2 3/4"	Springlatch	630
C1000-DL-630	Entry/Office, Classroom, Classroom Security, Storeroom	2 3/8"	Deadlatch	630
C1000-DL-234-630	Entry/Office, Classroom, Classroom Security, Storeroom	2 3/4"	Deadlatch	630

**Strikes:** Radius corner, full lip strike. 1 3/4" x 2 1/4".

Product description	Function	Finish
C1000-RCFLS-626	Radius corner, full lip strike	630

# C2000 Series

## Grade 2 cylindrical locks



### Specifications

- Grade 2, UL listed 3 hour
- 1 <sup>3</sup>/<sub>8</sub>" to 1 <sup>3</sup>/<sub>4</sub>" door range standard
- Brass (605) ball knobs come packaged with square-corner beveled latch with 2 <sup>3</sup>/<sub>8</sub>" backset and ANSI 1 <sup>1</sup>/<sub>4</sub>" x 2 <sup>1</sup>/<sub>4</sub>" T-Strike standard.
- All other functions (except dummy) include 1 <sup>1</sup>/<sub>8</sub>" x 2 <sup>1</sup>/<sub>4</sub>" square-corner beveled latch with 2 <sup>3</sup>/<sub>4</sub>" backset and ANSI 1 <sup>1</sup>/<sub>4</sub>" x 4 <sup>7</sup>/<sub>8</sub>" curved lip strike (30-148)
- Schlage C cylinders are 6-pin cylinders keyed 6, keyed different
- Accommodate SFIC to accept 6-pin/7-pin

### Locksets

Product description	Lever feature	Function	Trim	Finish	Cylinder
C2000-SDUM-R-626	Non-clutching	Single Dummy Trim	Regular	626	N/A
C2000-SDUM-R-613	Non-clutching	Single Dummy Trim	Regular	613	N/A
C2000-SDUM-R-605	Non-clutching	Single Dummy Trim	Regular	605	N/A
C2000-SDUM-C-626	Non-clutching	Single Dummy Trim	Curved	626	N/A
C2000-SDUM-C-613	Non-clutching	Single Dummy Trim	Curved	613	N/A
C2000-SDUM-B-630	Non-clutching	Single Dummy Trim	Ball	630	N/A
C2000-SDUM-B-613	Non-clutching	Single Dummy Trim	Ball	613	N/A
C2000-PASS-R-626	Non-clutching	Passage (F75)	Regular	626	N/A
C2000-PASS-R-613	Non-clutching	Passage (F75)	Regular	613	N/A
C2000-PASS-R-605	Non-clutching	Passage (F75)	Regular	605	N/A
C2000-PASS-C-626	Non-clutching	Passage (F75)	Curved	626	N/A
C2000-PASS-C-613	Non-clutching	Passage (F75)	Curved	613	N/A
C2000-PASS-B-630	Non-clutching	Passage (F75)	Ball	630	N/A
C2000-PASS-B-613	Non-clutching	Passage (F75)	Ball	613	N/A
C2000-PASS-B-605	Non-clutching	Passage (F75)	Ball	605	N/A
C2000-PRIV-R-626	Non-clutching	Privacy (F76)	Regular	626	N/A
C2000-PRIV-R-613	Non-clutching	Privacy (F76)	Regular	613	N/A
C2000-PRIV-R-605	Non-clutching	Privacy (F76)	Regular	605	N/A
C2000-PRIV-C-626	Non-clutching	Privacy (F76)	Curved	626	N/A
C2000-PRIV-C-613	Non-clutching	Privacy (F76)	Curved	613	N/A
C2000-PRIV-B-630	Non-clutching	Privacy (F76)	Ball	630	N/A
C2000-PRIV-B-613	Non-clutching	Privacy (F76)	Ball	613	N/A
C2000-PRIV-B-605	Non-clutching	Privacy (F76)	Ball	605	N/A
C2000-CL-ENTR-R-626-KDC	Clutching	Entry/Office (F109)	Regular	626	6-pin, Schlage C, KD
C2000-ENTR-R-626-KDC	Non-clutching	Entry/Office (F109)	Regular	626	6-pin, Schlage C, KD
C2000-CL-ENTR-R-613-KDC	Clutching	Entry/Office (F109)	Regular	613	6-pin, Schlage C, KD
C2000-ENTR-R-613-KDC	Non-clutching	Entry/Office (F109)	Regular	613	6-pin, Schlage C, KD
C2000-ENTR-R-605-KDC	Non-clutching	Entry/Office (F109)	Regular	605	6-pin, Schlage C, KD
C2000-CL-ENTR-R-626-SFIC	Clutching	Entry/Office (F109)	Regular	626	Less SFIC
C2000-ENTR-R-626-SFIC	Non-clutching	Entry/Office (F109)	Regular	626	Less SFIC

## C2000 Series

### Grade 2 cylindrical locks

#### Locksets

Product description	Lever feature	Function	Trim	Finish	Cylinder
C2000-CL-ENTR-R-613-SFIC	Clutching	Entry/Office (F109)	Regular	613	Less SFIC
C2000-ENTR-R-613-SFIC	Non-clutching	Entry/Office (F109)	Regular	613	Less SFIC
C2000-ENTR-R-605-SFIC	Non-clutching	Entry/Office (F109)	Regular	605	Less SFIC
C2000-CL-ENTR-C-626-KDC	Clutching	Entry/Office (F109)	Curved	626	6-pin, Schlage C, KD
C2000-ENTR-C-626-KDC	Non-clutching	Entry/Office (F109)	Curved	626	6-pin, Schlage C, KD
C2000-CL-ENTR-C-613-KDC	Clutching	Entry/Office (F109)	Curved	613	6-pin, Schlage C, KD
C2000-ENTR-C-613-KDC	Non-clutching	Entry/Office (F109)	Curved	613	6-pin, Schlage C, KD
C2000-CL-ENTR-C-626-SFIC	Clutching	Entry/Office (F109)	Curved	626	Less SFIC
C2000-ENTR-C-626-SFIC	Non-clutching	Entry/Office (F109)	Curved	626	Less SFIC
C2000-CL-ENTR-C-613-SFIC	Clutching	Entry/Office (F109)	Curved	613	Less SFIC
C2000-ENTR-C-613-SFIC	Non-clutching	Entry/Office (F109)	Curved	613	Less SFIC
C2000-ENTR-B-630-KDC	Non-clutching	Entry/Office (F109)	Ball	630	6-pin, Schlage C, KD
C2000-ENTR-B-613-KDC	Non-clutching	Entry/Office (F109)	Ball	613	6-pin, Schlage C, KD
C2000-ENTR-B-605-KDC	Non-clutching	Entry/Office (F109)	Ball	605	6-pin, Schlage C, KD
C2000-ENTR-B-630-SFIC	Non-clutching	Entry/Office (F109)	Ball	630	Less SFIC
C2000-ENTR-B-613-SFIC	Non-clutching	Entry/Office (F109)	Ball	613	Less SFIC
C2000-ENTR-B-605-SFIC	Non-clutching	Entry/Office (F109)	Ball	605	Less SFIC
C2000-CL-CLRM-R-626-KDC	Clutching	Classroom (F84)	Regular	626	6-pin, Schlage C, KD
C2000-CLRM-R-626-KDC	Non-clutching	Classroom (F84)	Regular	626	6-pin, Schlage C, KD
C2000-CL-CLRM-R-613-KDC	Clutching	Classroom (F84)	Regular	613	6-pin, Schlage C, KD
C2000-CLRM-R-613-KDC	Non-clutching	Classroom (F84)	Regular	613	6-pin, Schlage C, KD
C2000-CLRM-R-605-KDC	Non-clutching	Classroom (F84)	Regular	605	6-pin, Schlage C, KD
C2000-CL-CLRM-R-626-SFIC	Clutching	Classroom (F84)	Regular	626	Less SFIC
C2000-CLRM-R-626-SFIC	Non-clutching	Classroom (F84)	Regular	626	Less SFIC
C2000-CL-CLRM-R-613-SFIC	Clutching	Classroom (F84)	Regular	613	Less SFIC
C2000-CLRM-R-613-SFIC	Non-clutching	Classroom (F84)	Regular	613	Less SFIC
C2000-CLRM-R-605-SFIC	Non-clutching	Classroom (F84)	Regular	605	Less SFIC
C2000-CL-CLRM-C-626-KDC	Clutching	Classroom (F84)	Curved	626	6-pin, Schlage C, KD
C2000-CLRM-C-626-KDC	Non-clutching	Classroom (F84)	Curved	626	6-pin, Schlage C, KD
C2000-CL-CLRM-C-613-KDC	Clutching	Classroom (F84)	Curved	613	6-pin, Schlage C, KD
C2000-CLRM-C-613-KDC	Non-clutching	Classroom (F84)	Curved	613	6-pin, Schlage C, KD
C2000-CL-CLRM-C-626-SFIC	Clutching	Classroom (F84)	Curved	626	Less SFIC
C2000-CLRM-C-626-SFIC	Non-clutching	Classroom (F84)	Curved	626	Less SFIC
C2000-CL-CLRM-C-613-SFIC	Clutching	Classroom (F84)	Curved	613	Less SFIC
C2000-CLRM-C-613-SFIC	Non-clutching	Classroom (F84)	Curved	613	Less SFIC
C2000-CLRM-B-630-KDC	Non-clutching	Classroom (F84)	Ball	630	6-pin, Schlage C, KD
C2000-CLRM-B-613-KDC	Non-clutching	Classroom (F84)	Ball	613	6-pin, Schlage C, KD
C2000-CLRM-B-605-KDC	Non-clutching	Classroom (F84)	Ball	605	6-pin, Schlage C, KD
C2000-CLRM-B-630-SFIC	Non-clutching	Classroom (F84)	Ball	630	Less SFIC
C2000-CLRM-B-613-SFIC	Non-clutching	Classroom (F84)	Ball	613	Less SFIC
C2000-CL-STRM-R-626-KDC	Clutching	Storeroom (F86)	Regular	626	6-pin, Schlage C, KD
C2000-STRM-R-626-KDC	Non-clutching	Storeroom (F86)	Regular	626	6-pin, Schlage C, KD
C2000-CL-STRM-R-613-KDC	Clutching	Storeroom (F86)	Regular	613	6-pin, Schlage C, KD
C2000-STRM-R-613-KDC	Non-clutching	Storeroom (F86)	Regular	613	6-pin, Schlage C, KD
C2000-STRM-R-605-KDC	Non-clutching	Storeroom (F86)	Regular	605	6-pin, Schlage C, KD
C2000-CL-STRM-R-626-SFIC	Clutching	Storeroom (F86)	Regular	626	Less SFIC
C2000-STRM-R-626-SFIC	Non-clutching	Storeroom (F86)	Regular	626	Less SFIC

## C2000 Series

### Grade 2 cylindrical locks

#### Locksets

Product description	Lever feature	Function	Trim	Finish	Cylinder
C2000-CL-STRM-R-613-SFIC	Clutching	Storeroom (F86)	Regular	613	Less SFIC
C2000-STRM-R-613-SFIC	Non-clutching	Storeroom (F86)	Regular	613	Less SFIC
C2000-STRM-R-605-SFIC	Non-clutching	Storeroom (F86)	Regular	605	Less SFIC
C2000-CL-STRM-C-626-KDC	Clutching	Storeroom (F86)	Curved	626	6-pin, Schlage C, KD
C2000-STRM-C-626-KDC	Non-clutching	Storeroom (F86)	Curved	626	6-pin, Schlage C, KD
C2000-CL-STRM-C-613-KDC	Clutching	Storeroom (F86)	Curved	613	6-pin, Schlage C, KD
C2000-STRM-C-613-KDC	Non-clutching	Storeroom (F86)	Curved	613	6-pin, Schlage C, KD
C2000-CL-STRM-C-626-SFIC	Clutching	Storeroom (F86)	Curved	626	Less SFIC
C2000-STRM-C-626-SFIC	Non-clutching	Storeroom (F86)	Curved	626	Less SFIC
C2000-CL-STRM-C-613-SFIC	Clutching	Storeroom (F86)	Curved	613	Less SFIC
C2000-STRM-C-613-SFIC	Non-clutching	Storeroom (F86)	Curved	613	Less SFIC
C2000-STRM-B-630-KDC	Non-clutching	Storeroom (F86)	Ball	630	6-pin, Schlage C, KD
C2000-STRM-B-613-KDC	Non-clutching	Storeroom (F86)	Ball	613	6-pin, Schlage C, KD
C2000-STRM-B-605-KDC	Non-clutching	Storeroom (F86)	Ball	605	6-pin, Schlage C, KD
C2000-STRM-B-630-SFIC	Non-clutching	Storeroom (F86)	Ball	630	Less SFIC
C2000-STRM-B-613-SFIC	Non-clutching	Storeroom (F86)	Ball	613	Less SFIC
C2000-STRM-B-605-SFIC	Non-clutching	Storeroom (F86)	Ball	605	Less SFIC

#### Designs



Regular lever



Curved lever



Ball knob

#### Finishes



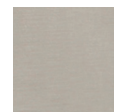
605



613



626



630

**C2000 Series**  
**Grade 2 cylindrical locks**

**Accessories**

**Latches:** All latches are square corner with 1 1/8" x 2 1/4" faceplate. Grade 2 latches are square corner with 2 3/8" and 2 3/4" backsets available. Products with "234" in the description represent a 2 3/4" backset.

Product description	Function	Backset	Latch type	Finish
C2000-SL-630	Passage, Privacy	2 3/8"	Springlatch	630
C2000-SL-234-630	Passage, Privacy	2 3/4"	Springlatch	630
C2000-SL-613	Passage, Privacy	2 3/8"	Springlatch	613
C2000-SL-605	Passage, Privacy	2 3/8"	Springlatch	605
C2000-SL-234-605	Passage, Privacy	2 3/4"	Springlatch	605
C2000-DL-630	Entry/Office, Classroom, Storeroom	2 3/8"	Deadlatch	630
C2000-DL-234-630	Entry/Office, Classroom, Storeroom	2 3/4"	Deadlatch	630
C2000-DL-613	Entry/Office, Classroom, Storeroom	2 3/8"	Deadlatch	613
C2000-DL-605	Entry/Office, Classroom, Storeroom	2 3/8"	Deadlatch	605
C2000-DL-234-605	Entry/Office, Classroom, Storeroom	2 3/4"	Deadlatch	605

**Strikes:**

Product description	Function	Finish
C2000-RCFLS-630	Radius corner, full lip strike, 1 5/8" x 2 1/4"	630
C2000-RCFLS-613	Radius corner, full lip strike, 1 5/8" x 2 1/4"	613
C2000-ACLS-605	ANSI, curved lip strike, 1 1/4" x 4 7/8"	605
C2000-TS-605	T-strike, 1 1/4" x 2 3/4"	605

**Tailpieces:**

Product description	Function	Finish	Cylinder
C2000-TP-SFIC	SFIC 6 and 7 Pin with shielding spacer	N/A	N/A



# DB1000 Series

## Grade 1 deadbolts



### Specifications

- Grade 1, UL listed 3 hour, 1 <sup>3</sup>/<sub>8</sub>" - 1 <sup>7</sup>/<sub>8</sub>" standard cylinder door range; 1 <sup>5</sup>/<sub>8</sub>" - 2" SFIC door range
- All functions include 2 <sup>3</sup>/<sub>8</sub>" - 2 <sup>3</sup>/<sub>4</sub>" universal square corner latch (p/n 30-253), 1 <sup>1</sup>/<sub>8</sub>" x 2 <sup>3</sup>/<sub>4</sub>" square corner lipless strike
- Schlage C cylinders are 6-pin cylinders keyed 6, keyed different
- Accommodates SFIC to accept 6-pin/7-pin

### Deadbolts

Product description	Function	Finish	Cylinder
DB1000-SCT-626-KDC	Single Cylinder x Turn	626	6-pin, Schlage C, KD
DB1000-SCT-613-KDC	Single Cylinder x Turn	613	6-pin, Schlage C, KD
DB1000-SCT-626-SFIC	Single Cylinder x Turn	626	Less SFIC
DB1000-SCT-613-SFIC	Single Cylinder x Turn	613	Less SFIC
DB1000-DCT-626-KDC	Double Cylinder	626	6-pin, Schlage C, KD
DB1000-DCT-613-KDC	Double Cylinder	613	6-pin, Schlage C, KD
DB1000-DCT-626-SFIC	Double Cylinder	626	Less SFIC
DB1000-DCT-613-SFIC	Double Cylinder	613	Less SFIC

### Finishes



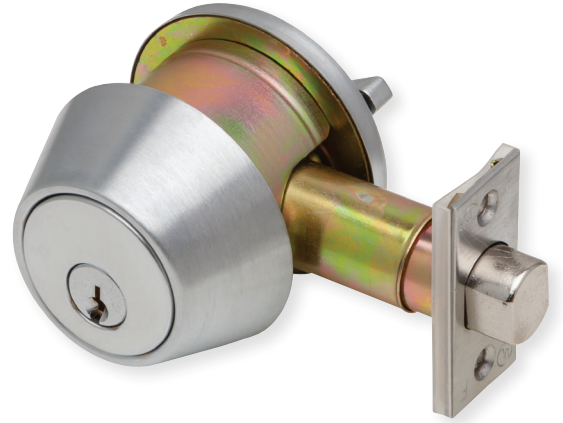
613



626

# DB2000 Series

## Grade 2 deadbolts



### Specifications

- Grade 2, UL listed 3 hour, 1 <sup>3</sup>/<sub>8</sub>" – 1 <sup>3</sup>/<sub>4</sub>" standard cylinder door range; 1 <sup>5</sup>/<sub>8</sub>" - 2" SFIC door range
- All functions include 2 <sup>3</sup>/<sub>8</sub>" - 2 <sup>3</sup>/<sub>4</sub>" universal square corner latch (p/n 30-253), 1 <sup>1</sup>/<sub>8</sub>" x 2 <sup>3</sup>/<sub>4</sub>" square corner lipless strike
- Schlage C cylinders are 6-pin cylinders keyed 6, keyed different
- Accommodates SFIC to accept 6-pin/7-pin

### Deadbolts

Product description	Function	Finish	Cylinder
DB2000-SCT-626-KDC	Single Cylinder x Turn	626	6-pin, Schlage C, KD
DB2000-SCT-613-KDC	Single Cylinder x Turn	613	6-pin, Schlage C, KD
DB2000-SCT-605-KDC	Single Cylinder X Turn	605	6-pin, Schlage C, KD
DB2000-SCT-626-SFIC	Single Cylinder x Turn	626	Less SFIC
DB2000-SCT-613-SFIC	Single Cylinder x Turn	613	Less SFIC
DB2000-SCT-605-SFIC	Single Cylinder X Turn	605	Less SFIC
DB2000-DCT-626-KDC	Double Cylinder	626	6-pin, Schlage C, KD
DB2000-DCT-613-KDC	Double Cylinder	613	6-pin, Schlage C, KD
DB2000-DCT-605-KDC	Double Cylinder	605	6-pin, Schlage C, KD
DB2000-DCT-626-SFIC	Double Cylinder	626	Less SFIC
DB2000-DCT-613-SFIC	Double Cylinder	613	Less SFIC
DB2000-DCT-605-SFIC	Double Cylinder	605	Less SFIC

### Tailpieces:

Product description	Function	Finish	Cylinder
DB2000-TP-SFIC	SFIC Tailpiece kit including fork for G2 DB	N/A	N/A
DB2000-TP	SFIC Tailpiece for G2 DB	N/A	N/A

### Finishes



605



613



626

# DB2000 Series

## Grade 2 drive-in deadbolts



### Specifications

- Grade 2, UL listed 3 hour, 1 <sup>3</sup>/<sub>8</sub>" – 1 <sup>3</sup>/<sub>4</sub>" standard cylinder door range; 1 <sup>5</sup>/<sub>8</sub>" - 2" SFIC door range
- 4WB (4-way bolt) function includes square corner faceplate and drive-in style collar is installed out of box
- 4WB-KIT contains an adjustable latch with both square corner faceplate and drive-in style collar in the box
- Schlage C cylinders are 6-pin cylinders keyed 6, keyed different
- Accommodates SFIC to accept 6-pin/7-pin

### Drive-in deadbolts

Product description	Function	Finish	Cylinder
DB2000-4WB-SCT-626-KDC	Single Cylinder x Turn	626	6-pin, Schlage C, KD
DB2000-4WB-SCT-613-KDC	Single Cylinder x Turn	613	6-pin, Schlage C, KD

### Latches

Product description	Function	Finish	Cylinder
DB2000-4WB-KIT-626	Replacement Latch	626	N/A
DB2000-4WB-KIT-613	Replacement Latch	613	N/A

Latch drive-in conversion kits are for use with DB1000 deadbolts only

### Finishes

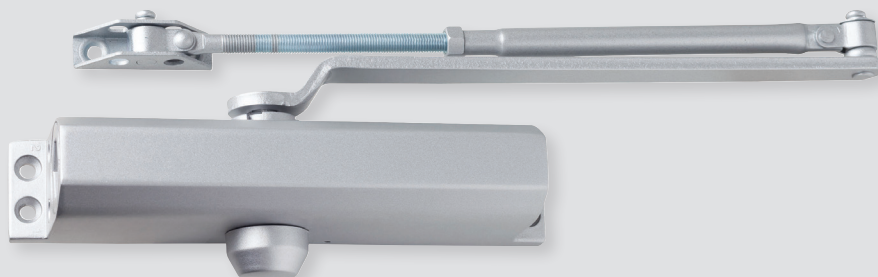


613



626

# Surface door closers



# DCH1000 Series

## Heavy duty surface door closers



### Specifications

- Grade 1, UL / UL 10C Listed (non-hold open arms), ADA compliant at size 1
- Adjustable spring size 1-6
- 6 3/4" x 2 3/8" mounting hole pattern
- Staked, independent adjustment values: sweep speed, latch speed, and back-check
- Single piece, cast aluminum body
- Universal hardware pack

### Closers

Product description	Cylinder type	Cover	Arm function	Finish
DCH1000-STD-FULL-RW/PA-ALUM	STD	Full	Rw/PA	ALUM
DCH1000-STD-FULL-RW/PA-DKBRZ	STD	Full	Rw/PA	DKBRZ
DCH1000-STD-FULL-HW/PA-ALUM	STD	Full	Hw/PA	ALUM
DCH1000-STD-FULL-DS-ALUM	STD	Full	DS	ALUM
DCH1000-STD-FULL-DS/HO-ALUM	STD	Full	DS/HO	ALUM

### Arm types

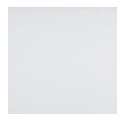
**Regular arm (Rw/PA):** Non-handed, regular arm with adjustable forearm assembly to accommodate a range of doors and frame reveal conditions. Mounts hinge side, top jamb or parallel arm. PA shoe included to allow installation in a parallel arm configuration.

**Hold-open arm (Hw/PA):** Non-handed, hold open arm with adjustable forearm assembly to accommodate a range of doors and frame reveal conditions. Mounts hinge side, top jamb or parallel arm. PA shoe included to allow installation in a parallel arm configuration.

**Dead stop arm (DS):** Non-handed, stamped, heavy duty, parallel arm includes a positive mechanical stop and non-adjustable forearm assembly for high volume traffic or potentially abusive installation conditions.

**Dead stop hold-open arm (DS/HO):** Non-handed, stamped, heavy duty, hold-open parallel arm includes a positive mechanical stop and non-adjustable forearm assembly for high volume traffic or potentially abusive installation conditions. Also includes a manually selective hold open function.

### Finishes



ALUM/689



DKBRZ/695



# DCM1000 Series

Medium duty surface door closers



### Specifications

- Grade 1, UL / UL 10C Listed (non-hold open arms), ADA compliant at size 1
- Adjustable spring size 1-6
- 12" x 3/4" mounting hole pattern
- Staked, independent adjustment values: sweep speed, latch speed, and back-check
- Single piece, cast aluminum body
- Universal hardware pack

### Closers

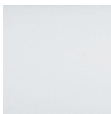
Product description	Cylinder type	Cover	Arm function	Finish
DCM1000-STD-SLIM-RW/PA-ALUM	STD	Slim	Rw/PA	ALUM
DCM1000-STD-SLIM-RW/PA-DKBRZ	STD	Slim	Rw/PA	DKBRZ
DCM1000-STD-FULL-RW/PA-ALUM	STD	Full	Rw/PA	ALUM
DCM1000-STD-FULL-RW/PA-DKBRZ	STD	Full	Rw/PA	DKBRZ
DCM1000-STD-SLIM-HW/PA-ALUM	STD	Slim	Hw/PA	ALUM
DCM1000-STD-SLIM-HW/PA-DKBRZ	STD	Slim	Hw/PA	DKBRZ
DCM1000-STD-FULL-HW/PA-ALUM	STD	Full	Hw/PA	ALUM
DCM1000-STD-FULL-HW/PA-DKBRZ	STD	Full	Hw/PA	DKBRZ

### Arm types

**Regular arm (Rw/PA):** Non-handed, regular arm with adjustable forearm assembly to accommodate a range of doors and frame reveal conditions. Mounts hinge side, top jamb or parallel arm. PA shoe included to allow installation in a parallel arm configuration.

**Hold-open arm (Hw/PA):** Non-handed, hold open arm with adjustable forearm assembly to accommodate a range of doors and frame reveal conditions. Mounts hinge side, top jamb or parallel arm. PA shoe included to allow installation in a parallel arm configuration.

### Finishes



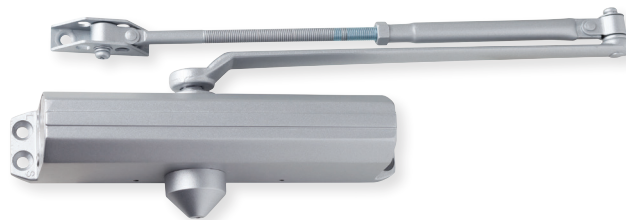
ALUM/689



DKBRZ/695

# DCL2000 Series

## Light duty surface door closers



### Specifications

- Grade 1, UL / UL 10C Listed (non-hold open arms), ADA compliant at size 1
- Adjustable spring size 1-6
- 9 1/16" x 3/4" mounting hole pattern
- Independent adjustment values: sweep speed, latch speed, and back-check
- Single piece, cast aluminum body
- Universal hardware pack

### Closers

Product description	Cylinder type	Cover	Arm function	Finish
DCL2000-STD-LESS-RW/PA-ALUM	STD	Less	Rw/PA	ALUM
DCL2000-STD-LESS-RW/PA-DKBRZ	STD	Less	Rw/PA	DKBRZ
DCL2000-STD-LESS-HW/PA-ALUM	STD	Less	Hw/PA	ALUM
DCL2000-STD-FULL-RW/PA-ALUM	STD	Full	Rw/PA	ALUM

### Arm types

**Regular arm (Rw/PA):** Non-handed, regular arm with adjustable forearm assembly to accommodate a range of doors and frame reveal conditions. Mounts hinge side, top jamb or parallel arm. PA shoe included to allow installation in a parallel arm configuration.

**Hold-open arm (Hw/PA):** Non-handed, hold open arm with adjustable forearm assembly to accommodate a range of doors and frame reveal conditions. Mounts hinge side, top jamb or parallel arm. PA shoe included to allow installation in a parallel arm configuration.

### Finishes



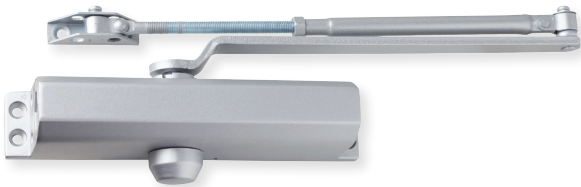
ALUM/689



DKBRZ/695

# DCR8000 Series

Residential duty surface door closers



**Specifications**

- Grade 1, UL / UL 10C Listed (non-hold open arms)  
ADA compliant at size 1, (180 deg - TJ and Pull Side)
- Adjustable spring size 1-4
- 9 1/16" x 3/4" mounting hole pattern
- Independent adjustment values: sweep speed, latch speed, and back-check
- Single piece, cast aluminum body
- Universal hardware pack

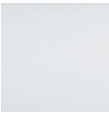
**Closers**

Product description	Cylinder type	Cover	Arm function	Finish
DCR8000-STD-LESS-RW/PA-ALUM	STD	Less	Rw/PA	ALUM
DCR8000-STD-LESS-RW/PA-DKBRZ	STD	Less	Rw/PA	DKBRZ

**Arm types**

**Regular arm (Rw/PA):** Non-handed, regular arm with adjustable forearm assembly to accommodate a range of doors and frame reveal conditions. Mounts hinge side, top jamb or parallel arm. PA shoe included to allow installation in a parallel arm configuration.

**Finishes**



ALUM/689



DKBRZ/695

## DCH1000, DCM1000, DCL2000 and DCR8000 Series Drop plates

### Drop plates

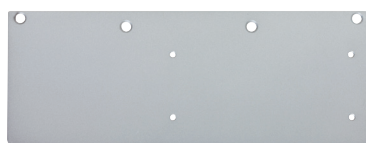
Product description	Plate type	Finish
DCH1000P-DP18-ALUM	Pull side/Top jamb	ALUM
DCH1000P-DP18-DKBRZ	Pull side/Top jamb	DKBRZ
DCH1000P-DP18PA-ALUM	Parallel arm	ALUM
DCH1000P-DP18PA-DKBRZ	Parallel arm	DKBRZ
DCM1000P-DP18TJ-ALUM	Pull side/Top jamb	ALUM
DCM1000P-DP18TJ-DKBRZ	Pull side/Top jamb	DKBRZ
DCM1000P-DP18PA-ALUM	Parallel arm	ALUM
DCM1000P-DP18PA-DKBRZ	Parallel arm	DKBRZ
DCL2000P-DP18TJ-ALUM	Top jamb	ALUM
DCL2000P-DP18TJ-DKBRZ	Top jamb	DKBRZ
DCL2000P-DP18PA-ALUM	Parallel arm	ALUM
DCL2000P-DP18PA-DKBRZ	Parallel arm	DKBRZ

Note: DCL2000P drop plates are also compatible with DCR8000 series closers.

#### DCH1000 Series



DCH1000  
Pull side/top jamb



DCH1000  
Parallel arm

#### DCM1000 Series

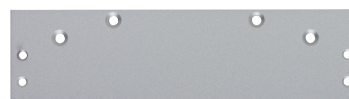


DCM1000  
Pull side/Top jamb



DCM1000  
Parallel arm

#### DCL2000 Series

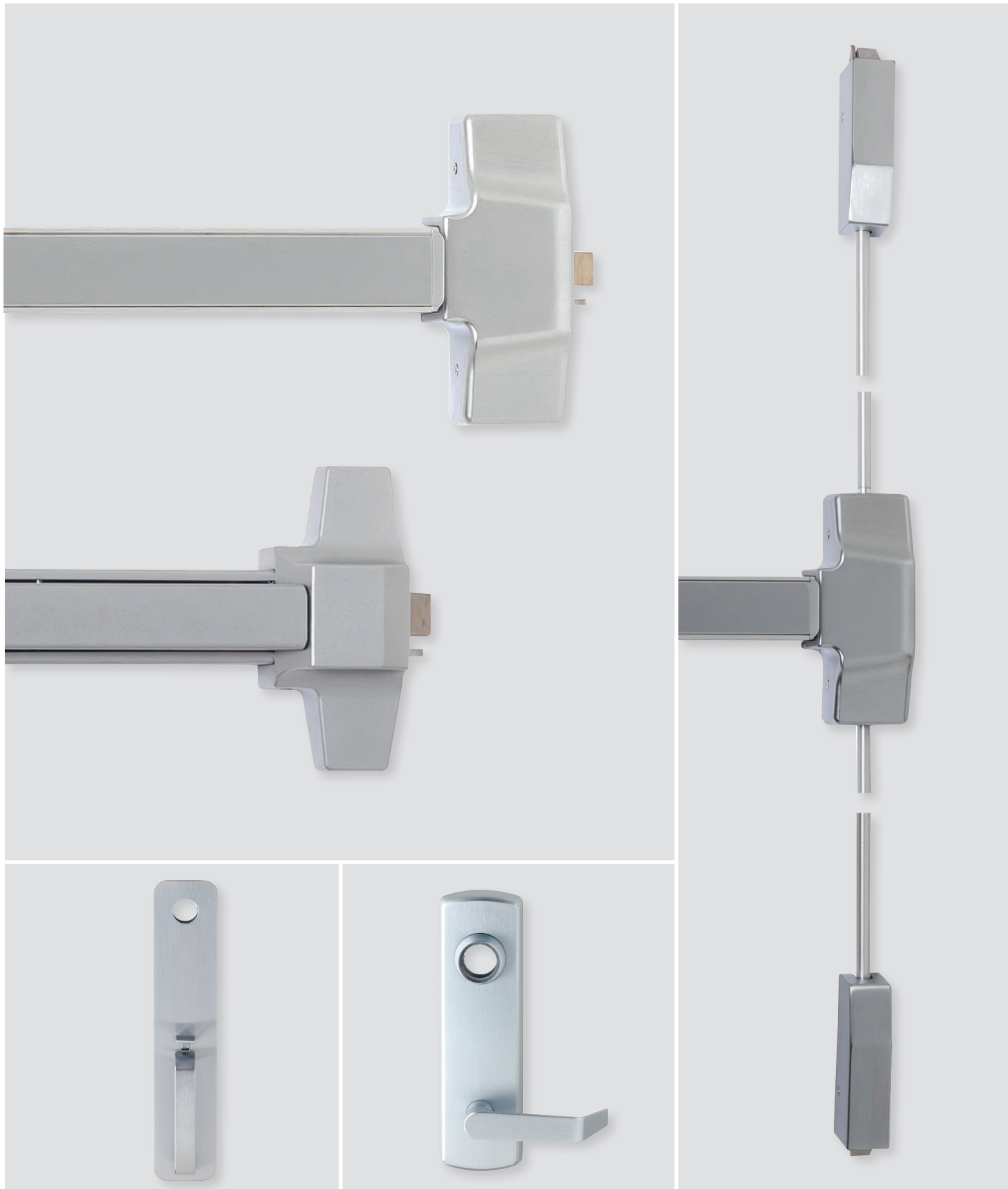


DCL2000  
Top jamb



DCL2000  
Parallel arm

# Exit devices





# ED1000 Series

## Grade 1 exit devices



### Specifications

- Grade 1, UL listed panic device, UL Listed 3-hour fire device
- Durable, aluminum mechanism case construction
- Deadlatching standard
- Devices fit standard 1 3/4" thick door
- 4 1/4" minimum stile width
- Hex Key Dogging standard on all panic devices
- All devices and trim are non-handed
- Universal hardware pack for wood and hollow metal
- Door widths: 36" device fits 29" to 36" door size; 48" device fits 33" to 48" door size

### ED1000-R Series rim panic device

Product description	Trim function	Device length	Finish
ED1000-R-EO-3 FT-US26D	Exit Only	3'	US26D
ED1000-R-EO-4 FT-US26D	Exit Only	4'	US26D
ED1000-R-EO-3 FT-US32D	Exit Only	3'	US32D
ED1000-R-EO-4 FT-US32D	Exit Only	4'	US32D
ED1000-R-EO-3 FT-US10B	Exit Only	3'	US10B
ED1000-R-EO-4 FT-US10B	Exit Only	4'	US10B

### ED1000-R-F Series rim fire exit hardware

Product description	Trim function	Device length	Finish
ED1000-R-F-EO-3 FT-US26D	Exit Only	3'	US26D
ED1000-R-F-EO-3 FT-US10B	Exit Only	3'	US10B

### ED1000-V Series surface vertical rod panic device

Product description	Trim function	Device length	Door height	Finish
ED1000-V-EO-3 FT-7'DH-US26D	Exit Only	3'	7'	US26D
ED1000-V-EO-3 FT-7'DH-US10B	Exit Only	3'	7'	US10B

## ED1000 Series

### Trim and accessories

#### Trim

Product description	Function	Cylinder	Finish
ED1000T-CLRM-R-ESC-NC-US26D	Escutcheon lever - Classroom	NC (requires mortise <sup>1</sup> )	US26D
ED1000T-CLRM-R-ESC-NC-US10B	Escutcheon lever - Classroom	NC (requires mortise <sup>1</sup> )	US10B
ED1000T-NL-R-ESC-NC-US26D	Escutcheon lever - Night latch	NC (requires rim)	US26D
ED1000T-NL-R-ESC-NC-US10B	Escutcheon lever - Night latch	NC (requires rim)	US10B
ED1000T-PASS-R-ESC-US26D	Escutcheon lever - Passage blank escutcheon	-	US26D
ED1000T-PASS-R-ESC-US10B	Escutcheon lever - Passage blank escutcheon	-	US10B
ED1000T-CLRM-TP-NC-US26D	Thumbpiece pull plate - Classroom	NC (requires mortise <sup>1</sup> )	US26D
ED1000T-CLRM-TP-NC-US10B	Thumbpiece pull plate - Classroom	NC (requires mortise <sup>1</sup> )	US10B
ED1000T-NL-HPUL-NC-US26D	Handle pull plate - Night latch	NC (requires rim)	US26D
ED1000T-NL-HPUL-NC-US10B	Handle pull plate - Night latch	NC (requires rim)	US10B

NC = No cylinder included

<sup>1</sup> Mortise cylinder with standard cam similar to Schlage B502-191 cam



Escutcheon lever -  
Classroom



Escutcheon lever -  
Night latch



Escutcheon lever -  
Passage blank  
escutcheon



Thumbpiece  
pull plate -  
Classroom



Handle  
pull plate -  
Night latch

#### Finishes



US26D



US10B



US32D

#### Extension rods

Product description	Length	Finish
ED1000-EXTRD-US26D	12"	US26D
ED1000-EXTRD-US10B	12"	US10B

# ED2000 Series

## Grade 2 exit devices



### Specifications

- Grade 2, UL listed panic device, UL Listed 3-hour fire rim device
- Durable, steel mechanism case construction
- Deadlatching standard
- Devices fit standard 1 3/4" thick door
- 3 1/2" minimum stile width
- Hex Key Dogging standard on all panic devices
- Rim devices and trim are non-handed; Surface vertical devices easily field reversible
- Universal hardware pack for wood and hollow metal
- Door widths: 36" device fits 29" to 36" door size; 48" device fits 33" to 48" door size

### ED2000-R Series Rim Panic Device

Product description	Trim function	Device length	Finish
ED2000-R-EO-3 FT-SP28	Exit Only	3'	SP28
ED2000-R-EO-4 FT-SP28	Exit Only	4'	SP28
ED2000-R-EO-3 FT-SP313	Exit Only	3'	SP313
ED2000-R-EO-4 FT-SP313	Exit Only	4'	SP313

### ED2000-R-F Series Rim Fire Exit Device

Product description	Trim function	Device length	Finish
ED2000-R-F-EO-3 FT-SP28	Exit Only	3'	SP28
ED2000-R-F-EO-3 FT-SP313	Exit Only	3'	SP313

### ED2000-V Series Surface Vertical Rod Panic Device

Product description	Trim function	Device length	Door height	Finish
ED2000-V-EO-3 FT-7'DH-SP28	Exit Only	3'	7'	SP28
ED2000-V-EO-3 FT-7'DH-SP313	Exit Only	3'	7'	SP313

## ED2000 Series

### Trim and accessories

#### Trim

Product description	Function	Cylinder	Finish
ED2000T-CLRM-R-ESC-NC-SP28	Escutcheon lever - Classroom	NC (requires mortise <sup>1</sup> )	SP28
ED2000T-CLRM-R-ESC-NC-SP313	Escutcheon lever - Classroom	NC (requires mortise <sup>1</sup> )	SP313
ED2000T-NL-R-ESC-NC-SP28	Escutcheon lever - Night latch	NC (requires mortise <sup>1</sup> )	SP28
ED2000T-NL-R-ESC-NC-SP313	Escutcheon lever - Night latch	NC (requires mortise <sup>1</sup> )	SP313
ED2000T-NL-PULL-NC-SP28	Raised lip pull plate - Night latch	NC (requires rim)	SP28
ED2000T-NL-PULL-NC-SP313	Raised lip pull plate - Night latch	NC (requires rim)	SP313
ED2000T-DUM-PULL-SP28	Raised lip pull plate - Dummy	-	SP28
ED2000T-DUM-PULL-SP313	Raised lip pull plate - Dummy	-	SP313
ED2000T-CLRM-R-KDC-SP28	Key in lever round rose - Classroom	KDC	SP28
ED2000T-CLRM-R-KDC-SP313	Key in lever round rose - Classroom	KDC	SP313
ED2000T-NL-R-KDC-SP28	Key in lever round rose - Night latch	KDC	SP28
ED2000T-NL-R-KDC-SP313	Key in lever round rose - Night latch	KDC	SP313
ED2000T-CLRM-R-SFIC-SP28	Key in lever round rose - Classroom	Less SFIC	SP28
ED2000T-NL-R-SFIC-SP28	Key in lever round rose - Night latch	Less SFIC	SP28
ED2000T-NL-PULL-ESC-NC-SP28	Handle pull plate - Night latch	NC (requires rim)	SP28
ED2000T-NL-PULL-ESC-NC-SP313	Handle pull plate - Night latch	NC (requires rim)	SP313
ED2000T-DUM-PULL-ESC-SP28	Handle pull plate - Dummy	-	SP28
ED2000T-DUM-PULL-ESC-SP313	Handle pull plate - Dummy	-	SP313

NC = No cylinder included

KDC = KIL cylinder, Schlage C Keyway, Keyed differently

<sup>1</sup> Mortise cylinder with standard cam similar to Schlage B502-191 cam



Escutcheon lever -  
Classroom/  
Night latch



Raised lip  
pull plate -  
Night latch



Raised lip  
pull plate -  
Dummy



Key in lever round  
rose - Classroom/  
Night latch  
Less SFIC not shown



Handle  
pull plate -  
Night latch



Handle  
pull plate -  
Dummy

#### Finishes



SP28



SP313

#### Extension rods

Product description	Length	Finish
ED2000-EXTRD-SP28	12"	SP28
ED2000-EXTRD-SP313	12"	SP313

## Notes



## About Allegion

Allegion (NYSE: ALLE) is a global pioneer in safety and security, with leading brands like CISA®, Interflex®, LCN®, Schlage®, SimonsVoss® and Von Duprin®. Focusing on security around the door and adjacent areas, Allegion produces a range of solutions for homes, businesses, schools and other institutions. Allegion is a \$2 billion company, with products sold in almost 130 countries.

For more, visit **[www.allegion.com](http://www.allegion.com)**