

DEXTER®
COMMERCIAL HARDWARE

Full line catalog

Locks, closers, and exits



Contents

Cylindrical locks and deadbolts

C1000 Series	4
C2000 Series	6
DB1000 Series	10
DB2000 Series	11

Surface door closers

DCH1000 Series	13
DCM1000 Series	14
DCL2000 Series	15
DCR8000 Series	16

Exit devices

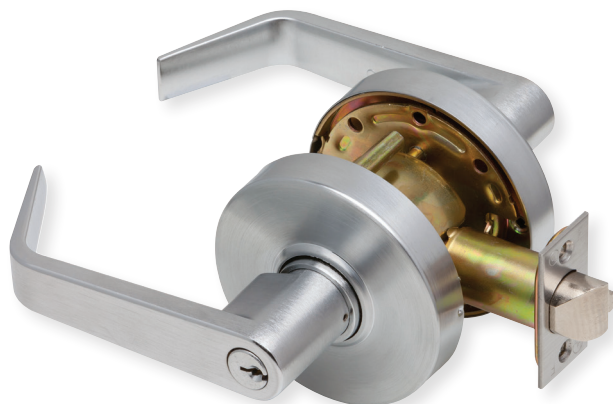
ED1000 Series	19
ED2000 Series	21
Notes	23

Cylindrical locks and deadbolts



C1000 Series

Grade 1 cylindrical lock



Specifications

- Grade 1, UL listed 3 hour
- 1 3/8" to 2" door range standard
- All functions include 1 1/8" x 2 1/4" square-corner beveled latch with 2 3/4" backset and ANSI 1 1/4" x 4 7/8" curved lip strike
- Accommodate Schlage C cylinders are 6-pin cylinders keyed 6, keyed different
- Accommodates SFIC to accept 6-pin/7-pin

Locksets

Product description	Lever feature	Function	Trim	Finish	Cylinder
C1000-PASS-R-626	Clutching	Passage (F75)	Regular	626	N/A
C1000-PASS-R-613	Clutching	Passage (F75)	Regular	613	N/A
C1000-PASS-C-626	Clutching	Passage (F75)	Curved	626	N/A
C1000-PASS-C-613	Clutching	Passage (F75)	Curved	613	N/A
C1000-PRIV-R-626	Clutching	Privacy (F76)	Regular	626	N/A
C1000-PRIV-R-613	Clutching	Privacy (F76)	Regular	613	N/A
C1000-PRIV-C-626	Clutching	Privacy (F76)	Curved	626	N/A
C1000-PRIV-C-613	Clutching	Privacy (F76)	Curved	613	N/A
C1000-ASYL-R-626-KDC	Clutching	Asylum (F87)	Regular	626	6-pin, Schlage C, KD
C1000-ASYL-C-626-KDC	Clutching	Asylum (F87)	Curved	626	6-pin, Schlage C, KD
C1000-ENTR-R-626-KDC	Clutching	Entry/Office (F109)	Regular	626	6-pin, Schlage C, KD
C1000-NC-ENTR-R-626-KDC	Non-clutching	Entry/Office (F109)	Regular	626	6-pin, Schlage C, KD
C1000-ENTR-R-613-KDC	Clutching	Entry/Office (F109)	Regular	613	6-pin, Schlage C, KD
C1000-ENTR-R-626-SFIC	Clutching	Entry/Office (F109)	Regular	626	Less SFIC
C1000-NC-ENTR-R-626-SFIC	Non-clutching	Entry/Office (F109)	Regular	626	Less SFIC
C1000-ENTR-R-613-SFIC	Clutching	Entry/Office (F109)	Regular	613	Less SFIC
C1000-ENTR-C-626-KDC	Clutching	Entry/Office (F109)	Curved	626	6-pin, Schlage C, KD
C1000-ENTR-C-613-KDC	Clutching	Entry/Office (F109)	Curved	613	6-pin, Schlage C, KD
C1000-ENTR-C-626-SFIC	Clutching	Entry/Office (F109)	Curved	626	Less SFIC
C1000-ENTR-C-613-SFIC	Clutching	Entry/Office (F109)	Curved	613	Less SFIC
C1000-CLRM-R-626-KDC	Clutching	Classroom (F84)	Regular	626	6-pin, Schlage C, KD
C1000-CLRM-R-613-KDC	Clutching	Classroom (F84)	Regular	613	6-pin, Schlage C, KD
C1000-CLRM-R-626-SFIC	Clutching	Classroom (F84)	Regular	626	Less SFIC
C1000-CLRM-R-613-SFIC	Clutching	Classroom (F84)	Regular	613	Less SFIC
C1000-CLRM-C-626-KDC	Clutching	Classroom (F84)	Curved	626	6-pin, Schlage C, KD
C1000-CLRM-C-613-KDC	Clutching	Classroom (F84)	Curved	613	6-pin, Schlage C, KD
C1000-CLRM-C-626-SFIC	Clutching	Classroom (F84)	Curved	626	Less SFIC
C1000-CLRM-C-613-SFIC	Clutching	Classroom (F84)	Curved	613	Less SFIC

C1000 Series
Grade 1 cylindrical lock

Locksets

Product description	Lever feature	Function	Trim	Finish	Cylinder
C1000-CSEC-R-626-KDC	Clutching	Classroom Security (F88)	Regular	626	6-pin, Schlage C, KD
C1000-CSEC-R-613-KDC	Clutching	Classroom Security (F88)	Regular	613	6-pin, Schlage C, KD
C1000-CSEC-R-626-SFIC	Clutching	Classroom Security (F88)	Regular	626	Less SFIC
C1000-CSEC-R-613-SFIC	Clutching	Classroom Security (F88)	Regular	613	Less SFIC
C1000-CSEC-C-626-KDC	Clutching	Classroom Security (F88)	Curved	626	6-pin, Schlage C, KD
C1000-CSEC-C-613-KDC	Clutching	Classroom Security (F88)	Curved	613	6-pin, Schlage C, KD
C1000-CSEC-C-626-SFIC	Clutching	Classroom Security (F88)	Curved	626	Less SFIC
C1000-CSEC-C-613-SFIC	Clutching	Classroom Security (F88)	Curved	613	Less SFIC
C1000-STRM-R-626-KDC	Clutching	Storeroom (F86)	Regular	626	6-pin, Schlage C, KD
C1000-NC-STRM-R-626-KDC	Non-clutching	Storeroom (F86)	Regular	626	6-pin, Schlage C, KD
C1000-STRM-R-613-KDC	Clutching	Storeroom (F86)	Regular	613	6-pin, Schlage C, KD
C1000-STRM-R-626-SFIC	Clutching	Storeroom (F86)	Regular	626	Less SFIC
C1000-NC-STRM-R-626-SFIC	Non-clutching	Storeroom (F86)	Regular	626	Less SFIC
C1000-STRM-R-613-SFIC	Clutching	Storeroom (F86)	Regular	613	Less SFIC
C1000-STRM-C-626-KDC	Clutching	Storeroom (F86)	Curved	626	6-pin, Schlage C, KD
C1000-STRM-C-613-KDC	Clutching	Storeroom (F86)	Curved	613	6-pin, Schlage C, KD
C1000-STRM-C-626-SFIC	Clutching	Storeroom (F86)	Curved	626	Less SFIC
C1000-STRM-C-613-SFIC	Clutching	Storeroom (F86)	Curved	613	Less SFIC

Designs



Regular lever



Curved lever

Finishes



613



626

Accessories

Latches: All latches are square corner with 1 1/8" x 2 1/4" faceplate. Grade 1 latches are square corner with 2 3/8" and 2 3/4" backsets available. Products with "234" in the description represent a 2 3/4" backset.

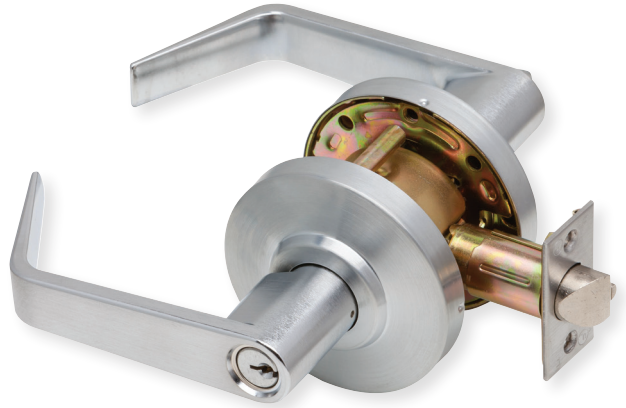
Product description	Function	Backset	Latch type	Finish
C1000-SL-630	Passage, Privacy	2 3/8"	Springlatch	630
C1000-SL-234-630	Passage, Privacy	2 3/4"	Springlatch	630
C1000-DL-630	Entry/Office, Classroom, Classroom Security, Storeroom	2 3/8"	Deadlatch	630
C1000-DL-234-630	Entry/Office, Classroom, Classroom Security, Storeroom	2 3/4"	Deadlatch	630

Strikes: Radius corner, full lip strike. 1 3/4" x 2 1/4".

Product description	Function	Finish
C1000-RCFLS-626	Radius corner, full lip strike	630

C2000 Series

Grade 2 cylindrical lock



Specifications

- Grade 2, UL listed 3 hour
- 1 ³/₈" to 1 ³/₄" door range standard
- Brass (605) ball knobs come packaged with square-corner beveled latch with 2 ³/₈" backset and ANSI 1 ¹/₄" x 2 ¹/₄" T-Strike standard.
- All other functions (except dummy) include 1 ¹/₈" x 2 ¹/₄" square-corner beveled latch with 2 ³/₈" backset and ANSI 1 ¹/₄" x 4 ⁷/₈" curved lip strike (30-148)
- Schlage C cylinders are 6-pin cylinders keyed 6, keyed different
- Accommodate SFIC to accept 6-pin/7-pin

Locksets

Product description	Lever feature	Function	Trim	Finish	Cylinder
C2000-SDUM-R-626	Non-clutching	Single Dummy Trim	Regular	626	N/A
C2000-SDUM-R-613	Non-clutching	Single Dummy Trim	Regular	613	N/A
C2000-SDUM-R-605	Non-clutching	Single Dummy Trim	Regular	605	N/A
C2000-SDUM-C-626	Non-clutching	Single Dummy Trim	Curved	626	N/A
C2000-SDUM-C-613	Non-clutching	Single Dummy Trim	Curved	613	N/A
C2000-SDUM-B-630	Non-clutching	Single Dummy Trim	Ball	630	N/A
C2000-SDUM-B-613	Non-clutching	Single Dummy Trim	Ball	613	N/A
C2000-PASS-R-626	Non-clutching	Passage (F75)	Regular	626	N/A
C2000-PASS-R-613	Non-clutching	Passage (F75)	Regular	613	N/A
C2000-PASS-R-605	Non-clutching	Passage (F75)	Regular	605	N/A
C2000-PASS-C-626	Non-clutching	Passage (F75)	Curved	626	N/A
C2000-PASS-C-613	Non-clutching	Passage (F75)	Curved	613	N/A
C2000-PASS-B-630	Non-clutching	Passage (F75)	Ball	630	N/A
C2000-PASS-B-613	Non-clutching	Passage (F75)	Ball	613	N/A
C2000-PASS-B-605	Non-clutching	Passage (F75)	Ball	605	N/A
C2000-PRIV-R-626	Non-clutching	Privacy (F76)	Regular	626	N/A
C2000-PRIV-R-613	Non-clutching	Privacy (F76)	Regular	613	N/A
C2000-PRIV-R-605	Non-clutching	Privacy (F76)	Regular	605	N/A
C2000-PRIV-C-626	Non-clutching	Privacy (F76)	Curved	626	N/A
C2000-PRIV-C-613	Non-clutching	Privacy (F76)	Curved	613	N/A
C2000-PRIV-B-630	Non-clutching	Privacy (F76)	Ball	630	N/A
C2000-PRIV-B-613	Non-clutching	Privacy (F76)	Ball	613	N/A
C2000-PRIV-B-605	Non-clutching	Privacy (F76)	Ball	605	N/A
C2000-CL-ENTR-R-626-KDC	Clutching	Entry/Office (F109)	Regular	626	6-pin, Schlage C, KD
C2000-ENTR-R-626-KDC	Non-clutching	Entry/Office (F109)	Regular	626	6-pin, Schlage C, KD
C2000-CL-ENTR-R-613-KDC	Clutching	Entry/Office (F109)	Regular	613	6-pin, Schlage C, KD
C2000-ENTR-R-613-KDC	Non-clutching	Entry/Office (F109)	Regular	613	6-pin, Schlage C, KD
C2000-ENTR-R-605-KDC	Non-clutching	Entry/Office (F109)	Regular	605	6-pin, Schlage C, KD
C2000-CL-ENTR-R-626-SFIC	Clutching	Entry/Office (F109)	Regular	626	Less SFIC
C2000-ENTR-R-626-SFIC	Non-clutching	Entry/Office (F109)	Regular	626	Less SFIC

C2000 Series
Grade 2 cylindrical lock

Locksets

Product description	Lever feature	Function	Trim	Finish	Cylinder
C2000-CL-ENTR-R-613-SFIC	Clutching	Entry/Office (F109)	Regular	613	Less SFIC
C2000-ENTR-R-613-SFIC	Non-clutching	Entry/Office (F109)	Regular	613	Less SFIC
C2000-ENTR-R-605-SFIC	Non-clutching	Entry/Office (F109)	Regular	605	Less SFIC
C2000-CL-ENTR-C-626-KDC	Clutching	Entry/Office (F109)	Curved	626	6-pin, Schlage C, KD
C2000-ENTR-C-626-KDC	Non-clutching	Entry/Office (F109)	Curved	626	6-pin, Schlage C, KD
C2000-CL-ENTR-C-613-KDC	Clutching	Entry/Office (F109)	Curved	613	6-pin, Schlage C, KD
C2000-ENTR-C-613-KDC	Non-clutching	Entry/Office (F109)	Curved	613	6-pin, Schlage C, KD
C2000-CL-ENTR-C-626-SFIC	Clutching	Entry/Office (F109)	Curved	626	Less SFIC
C2000-ENTR-C-626-SFIC	Non-clutching	Entry/Office (F109)	Curved	626	Less SFIC
C2000-CL-ENTR-C-613-SFIC	Clutching	Entry/Office (F109)	Curved	613	Less SFIC
C2000-ENTR-C-613-SFIC	Non-clutching	Entry/Office (F109)	Curved	613	Less SFIC
C2000-ENTR-B-630-KDC	Non-clutching	Entry/Office (F109)	Ball	630	6-pin, Schlage C, KD
C2000-ENTR-B-613-KDC	Non-clutching	Entry/Office (F109)	Ball	613	6-pin, Schlage C, KD
C2000-ENTR-B-605-KDC	Non-clutching	Entry/Office (F109)	Ball	605	6-pin, Schlage C, KD
C2000-ENTR-B-630-SFIC	Non-clutching	Entry/Office (F109)	Ball	630	Less SFIC
C2000-ENTR-B-613-SFIC	Non-clutching	Entry/Office (F109)	Ball	613	Less SFIC
C2000-ENTR-B-605-SFIC	Non-clutching	Entry/Office (F109)	Ball	605	Less SFIC
C2000-CL-CLRM-R-626-KDC	Clutching	Classroom (F84)	Regular	626	6-pin, Schlage C, KD
C2000-CLRM-R-626-KDC	Non-clutching	Classroom (F84)	Regular	626	6-pin, Schlage C, KD
C2000-CL-CLRM-R-613-KDC	Clutching	Classroom (F84)	Regular	613	6-pin, Schlage C, KD
C2000-CLRM-R-613-KDC	Non-clutching	Classroom (F84)	Regular	613	6-pin, Schlage C, KD
C2000-CLRM-R-605-KDC	Non-clutching	Classroom (F84)	Regular	605	6-pin, Schlage C, KD
C2000-CL-CLRM-R-626-SFIC	Clutching	Classroom (F84)	Regular	626	Less SFIC
C2000-CLRM-R-626-SFIC	Non-clutching	Classroom (F84)	Regular	626	Less SFIC
C2000-CL-CLRM-R-613-SFIC	Clutching	Classroom (F84)	Regular	613	Less SFIC
C2000-CLRM-R-613-SFIC	Non-clutching	Classroom (F84)	Regular	613	Less SFIC
C2000-CLRM-R-605-SFIC	Non-clutching	Classroom (F84)	Regular	605	Less SFIC
C2000-CL-CLRM-C-626-KDC	Clutching	Classroom (F84)	Curved	626	6-pin, Schlage C, KD
C2000-CLRM-C-626-KDC	Non-clutching	Classroom (F84)	Curved	626	6-pin, Schlage C, KD
C2000-CL-CLRM-C-613-KDC	Clutching	Classroom (F84)	Curved	613	6-pin, Schlage C, KD
C2000-CLRM-C-613-KDC	Non-clutching	Classroom (F84)	Curved	613	6-pin, Schlage C, KD
C2000-CL-CLRM-C-626-SFIC	Clutching	Classroom (F84)	Curved	626	Less SFIC
C2000-CLRM-C-626-SFIC	Non-clutching	Classroom (F84)	Curved	626	Less SFIC
C2000-CL-CLRM-C-613-SFIC	Clutching	Classroom (F84)	Curved	613	Less SFIC
C2000-CLRM-C-613-SFIC	Non-clutching	Classroom (F84)	Curved	613	Less SFIC
C2000-CLRM-B-630-KDC	Non-clutching	Classroom (F84)	Ball	630	6-pin, Schlage C, KD
C2000-CLRM-B-613-KDC	Non-clutching	Classroom (F84)	Ball	613	6-pin, Schlage C, KD
C2000-CLRM-B-605-KDC	Non-clutching	Classroom (F84)	Ball	605	6-pin, Schlage C, KD
C2000-CLRM-B-630-SFIC	Non-clutching	Classroom (F84)	Ball	630	Less SFIC
C2000-CLRM-B-613-SFIC	Non-clutching	Classroom (F84)	Ball	613	Less SFIC
C2000-CL-STRM-R-626-KDC	Clutching	Storeroom (F86)	Regular	626	6-pin, Schlage C, KD
C2000-STRM-R-626-KDC	Non-clutching	Storeroom (F86)	Regular	626	6-pin, Schlage C, KD
C2000-CL-STRM-R-613-KDC	Clutching	Storeroom (F86)	Regular	613	6-pin, Schlage C, KD
C2000-STRM-R-613-KDC	Non-clutching	Storeroom (F86)	Regular	613	6-pin, Schlage C, KD
C2000-STRM-R-605-KDC	Non-clutching	Storeroom (F86)	Regular	605	6-pin, Schlage C, KD
C2000-CL-STRM-R-626-SFIC	Clutching	Storeroom (F86)	Regular	626	Less SFIC
C2000-STRM-R-626-SFIC	Non-clutching	Storeroom (F86)	Regular	626	Less SFIC

C2000 Series
Grade 2 cylindrical lock

Locksets

Product description	Lever feature	Function	Trim	Finish	Cylinder
C2000-CL-STRM-R-613-SFIC	Clutching	Storeroom (F86)	Regular	613	Less SFIC
C2000-STRM-R-613-SFIC	Non-clutching	Storeroom (F86)	Regular	613	Less SFIC
C2000-STRM-R-605-SFIC	Non-clutching	Storeroom (F86)	Regular	605	Less SFIC
C2000-CL-STRM-C-626-KDC	Clutching	Storeroom (F86)	Curved	626	6-pin, Schlage C, KD
C2000-STRM-C-626-KDC	Non-clutching	Storeroom (F86)	Curved	626	6-pin, Schlage C, KD
C2000-CL-STRM-C-613-KDC	Clutching	Storeroom (F86)	Curved	613	6-pin, Schlage C, KD
C2000-STRM-C-613-KDC	Non-clutching	Storeroom (F86)	Curved	613	6-pin, Schlage C, KD
C2000-CL-STRM-C-626-SFIC	Clutching	Storeroom (F86)	Curved	626	Less SFIC
C2000-STRM-C-626-SFIC	Non-clutching	Storeroom (F86)	Curved	626	Less SFIC
C2000-CL-STRM-C-613-SFIC	Clutching	Storeroom (F86)	Curved	613	Less SFIC
C2000-STRM-C-613-SFIC	Non-clutching	Storeroom (F86)	Curved	613	Less SFIC
C2000-STRM-B-630-KDC	Non-clutching	Storeroom (F86)	Ball	630	6-pin, Schlage C, KD
C2000-STRM-B-613-KDC	Non-clutching	Storeroom (F86)	Ball	613	6-pin, Schlage C, KD
C2000-STRM-B-605-KDC	Non-clutching	Storeroom (F86)	Ball	605	6-pin, Schlage C, KD
C2000-STRM-B-630-SFIC	Non-clutching	Storeroom (F86)	Ball	630	Less SFIC
C2000-STRM-B-613-SFIC	Non-clutching	Storeroom (F86)	Ball	613	Less SFIC
C2000-STRM-B-605-SFIC	Non-clutching	Storeroom (F86)	Ball	605	Less SFIC

Designs



Regular lever



Curved lever



Ball knob

Finishes



605



613



626



630

C2000 Series
Grade 2 cylindrical lock

Accessories

Latches: All latches are square corner with 1 1/8" x 2 1/4" faceplate. Grade 2 latches are square corner with 2 3/8" and 2 3/4" backsets available. Products with "234" in the description represent a 2 3/4" backset.

Product description	Function	Backset	Latch type	Finish
C2000-SL-630	Passage, Privacy	2 3/8"	Springlatch	630
C2000-SL-234-630	Passage, Privacy	2 3/4"	Springlatch	630
C2000-SL-613	Passage, Privacy	2 3/8"	Springlatch	613
C2000-SL-605	Passage, Privacy	2 3/8"	Springlatch	605
C2000-SL-234-605	Passage, Privacy	2 3/4"	Springlatch	605
C2000-DL-630	Entry/Office, Classroom, Storeroom	2 3/8"	Deadlatch	630
C2000-DL-234-630	Entry/Office, Classroom, Storeroom	2 3/4"	Deadlatch	630
C2000-DL-613	Entry/Office, Classroom, Storeroom	2 3/8"	Deadlatch	613
C2000-DL-605	Entry/Office, Classroom, Storeroom	2 3/8"	Deadlatch	605
C2000-DL-234-605	Entry/Office, Classroom, Storeroom	2 3/4"	Deadlatch	605

Strikes:

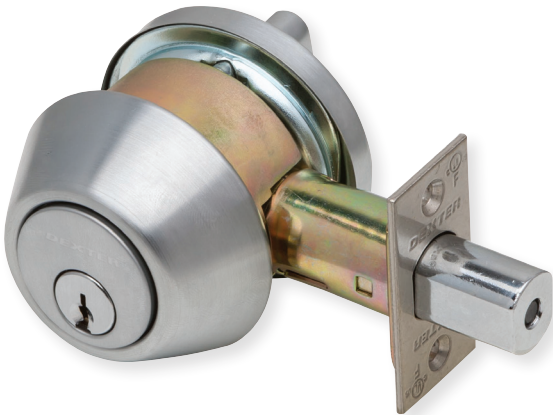
Product description	Function	Finish
C2000-RCFLS-630	Radius corner, full lip strike, 1 5/8" x 2 1/4"	630
C2000-RCFLS-613	Radius corner, full lip strike, 1 5/8" x 2 1/4"	613
C2000-ACLS-605	ANSI, curved lip strike, 1 1/4" x 4 7/8"	605
C2000-TS-605	T-strike, 1 1/4" x 2 3/4"	605

Tailpieces:

Product description	Function	Finish	Cylinder
C2000-TP-SFIC	SFIC 6 and 7 Pin with shielding spacer	N/A	N/A

DB1000 Series

Grade 1 deadbolt



Specifications

- Grade 1, UL listed 3 hour, 1 3/8" - 1 7/8" standard cylinder door range; 1 5/8" - 2" SFIC door range
- All functions include 2 3/8" - 2 3/4" universal square corner latch (p/n 30-253), 1 1/8" x 2 3/4" square corner lipless strike
- Schlage C cylinders are 6-pin cylinders keyed 6, keyed different
- Accommodates SFIC to accept 6-pin/7-pin

DB1000-SCT-626-KDC	Single Cylinder x Turn	626	6-pin, Schlage C, KD
DB1000-SCT-613-KDC	Single Cylinder x Turn	613	6-pin, Schlage C, KD
DB1000-SCT-626-SFIC	Single Cylinder x Turn	626	Less SFIC
DB1000-SCT-613-SFIC	Single Cylinder x Turn	613	Less SFIC
DB1000-DCT-626-KDC	Double Cylinder	626	6-pin, Schlage C, KD
DB1000-DCT-613-KDC	Double Cylinder	613	6-pin, Schlage C, KD
DB1000-DCT-626-SFIC	Double Cylinder	626	Less SFIC
DB1000-DCT-613-SFIC	Double Cylinder	613	Less SFIC

Finishes



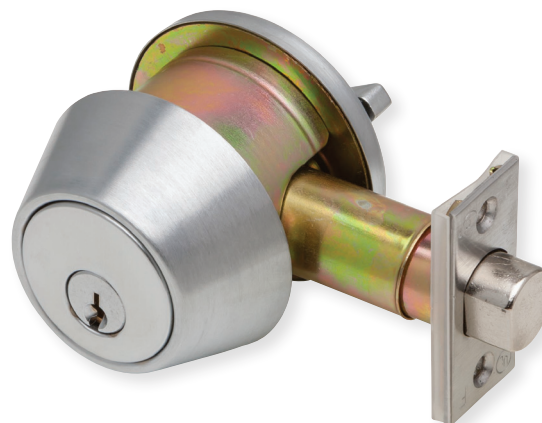
613



626

DB2000 Series

Grade 2 deadbolt



Specifications

- Grade 2, UL listed 3 hour, 1 $\frac{3}{8}$ " – 1 $\frac{3}{4}$ " standard cylinder door range; 1 $\frac{5}{8}$ " - 2" SFIC door range
- All functions include 2 $\frac{3}{8}$ " - 2 $\frac{3}{4}$ " universal square corner latch (p/n 30-253), 1 $\frac{1}{8}$ " x 2 $\frac{3}{4}$ " square corner lipless strike
- Schlage C cylinders are 6-pin cylinders keyed 6, keyed different
- Accommodates SFIC to accept 6-pin/7-pin

Deadbolts

Product description	Function	Finish	Cylinder
DB2000-SCT-626-KDC	Single Cylinder x Turn	626	6-pin, Schlage C, KD
DB2000-SCT-613-KDC	Single Cylinder x Turn	613	6-pin, Schlage C, KD
DB2000-SCT-605-KDC	Single Cylinder X Turn	605	6-pin, Schlage C, KD
DB2000-SCT-626-SFIC	Single Cylinder x Turn	626	Less SFIC
DB2000-SCT-613-SFIC	Single Cylinder x Turn	613	Less SFIC
DB2000-SCT-605-SFIC	Single Cylinder X Turn	605	Less SFIC
DB2000-DCT-626-KDC	Double Cylinder	626	6-pin, Schlage C, KD
DB2000-DCT-613-KDC	Double Cylinder	613	6-pin, Schlage C, KD
DB2000-DCT-605-KDC	Double Cylinder	605	6-pin, Schlage C, KD
DB2000-DCT-626-SFIC	Double Cylinder	626	Less SFIC
DB2000-DCT-613-SFIC	Double Cylinder	613	Less SFIC
DB2000-DCT-605-SFIC	Double Cylinder	605	Less SFIC

Tailpieces:

Product description	Function	Finish	Cylinder
DB2000-TP-SFIC	SFIC Tailpiece kit including fork for G2 DB	N/A	N/A
DB2000-TP	SFIC Tailpiece for G2 DB	N/A	N/A

Finishes



605

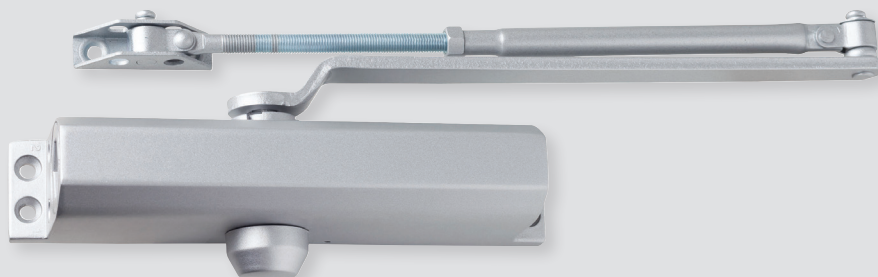


613



626

Surface door closers



DCH1000 Series

Heavy duty surface door closers



Specifications

- Grade 1, UL / UL 10C Listed (non-hold open arms), ADA compliant at size 1
- Adjustable spring size 1-6
- 6 3/4" x 2 3/8" mounting hole pattern
- Staked, independent adjustment values: sweep speed, latch speed, and back-check
- Single piece, cast aluminum body
- Universal hardware pack

Closers

Product description	Cylinder type	Cover	Arm function	Finish
DCH1000-STD-FULL-RW/PA-ALUM	STD	Full	Rw/PA	ALUM
DCH1000-STD-FULL-RW/PA-DKBRZ	STD	Full	Rw/PA	DKBRZ
DCH1000-STD-FULL-HW/PA-ALUM	STD	Full	Hw/PA	ALUM
DCH1000-STD-FULL-DS-ALUM	STD	Full	DS	ALUM
DCH1000-STD-FULL-DS/HO-ALUM	STD	Full	DS/HO	ALUM

Arm types

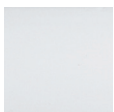
Regular arm (Rw/PA): Non-handed, regular arm with adjustable forearm assembly to accommodate a range of doors and frame reveal conditions. Mounts hinge side, top jamb or parallel arm. PA shoe included to allow installation in a parallel arm configuration.

Hold-open arm (Hw/PA): Non-handed, hold open arm with adjustable forearm assembly to accommodate a range of doors and frame reveal conditions. Mounts hinge side, top jamb or parallel arm. PA shoe included to allow installation in a parallel arm configuration.

Dead stop arm (DS): Non-handed, stamped, heavy duty, parallel arm includes a positive mechanical stop and non-adjustable forearm assembly for high volume traffic or potentially abusive installation conditions.

Dead stop hold-open arm (DS/HO): Non-handed, stamped, heavy duty, hold-open parallel arm includes a positive mechanical stop and non-adjustable forearm assembly for high volume traffic or potentially abusive installation conditions. Also includes a manually selective hold open function.

Finishes



ALUM/689



DKBRZ/695

DCM1000 Series

Medium duty surface door closers



Specifications

- Grade 1, UL / UL 10C Listed (non-hold open arms), ADA compliant at size 1
- Adjustable spring size 1-6
- 12" x 3/4" mounting hole pattern
- Staked, independent adjustment values: sweep speed, latch speed, and back-check
- Single piece, cast aluminum body
- Universal hardware pack

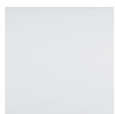
DCM1000-STD-SLIM-RW/PA-ALUM	STD	Slim	Rw/PA	ALUM
DCM1000-STD-SLIM-RW/PA-DKBRZ	STD	Slim	Rw/PA	DKBRZ
DCM1000-STD-FULL-RW/PA-ALUM	STD	Full	Rw/PA	ALUM
DCM1000-STD-FULL-RW/PA-DKBRZ	STD	Full	Rw/PA	DKBRZ
DCM1000-STD-SLIM-HW/PA-ALUM	STD	Slim	Hw/PA	ALUM
DCM1000-STD-SLIM-HW/PA-DKBRZ	STD	Slim	Hw/PA	DKBRZ
DCM1000-STD-FULL-HW/PA-ALUM	STD	Full	Hw/PA	ALUM
DCM1000-STD-FULL-HW/PA-DKBRZ	STD	Full	Hw/PA	DKBRZ

Arm types

Regular arm (Rw/PA): Non-handed, regular arm with adjustable forearm assembly to accommodate a range of doors and frame reveal conditions. Mounts hinge side, top jamb or parallel arm. PA shoe included to allow installation in a parallel arm configuration.

Hold-open arm (Hw/PA): Non-handed, hold open arm with adjustable forearm assembly to accommodate a range of doors and frame reveal conditions. Mounts hinge side, top jamb or parallel arm. PA shoe included to allow installation in a parallel arm configuration.

Finishes



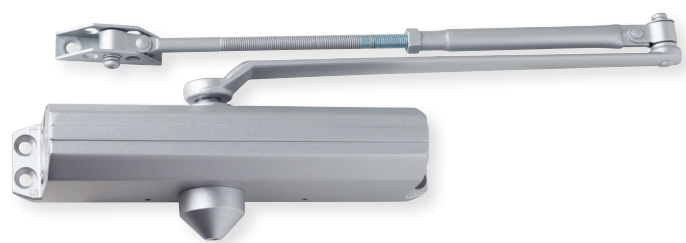
ALUM/689



DKBRZ/695

DCL2000 Series

Light duty surface door closers



Specifications

- Grade 1, UL / UL 10C Listed (non-hold open arms), ADA compliant at size 1
- Adjustable spring size 1-6
- 9 1/16" x 3/4" mounting hole pattern
- Independent adjustment values: sweep speed, latch speed, and back-check
- Single piece, cast aluminum body
- Universal hardware pack

Closers

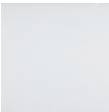
Product description	Cylinder type	Cover	Arm function	Finish
DCL2000-STD-LESS-RW/PA-ALUM	STD	Less	Rw/PA	ALUM
DCL2000-STD-LESS-RW/PA-DKBRZ	STD	Less	Rw/PA	DKBRZ
DCL2000-STD-LESS-HW/PA-ALUM	STD	Less	Hw/PA	ALUM
DCL2000-STD-FULL-RW/PA-ALUM	STD	Full	Rw/PA	ALUM

Arm types

Regular arm (Rw/PA): Non-handed, regular arm with adjustable forearm assembly to accommodate a range of doors and frame reveal conditions. Mounts hinge side, top jamb or parallel arm. PA shoe included to allow installation in a parallel arm configuration.

Hold-open arm (Hw/PA): Non-handed, hold open arm with adjustable forearm assembly to accommodate a range of doors and frame reveal conditions. Mounts hinge side, top jamb or parallel arm. PA shoe included to allow installation in a parallel arm configuration.

Finishes



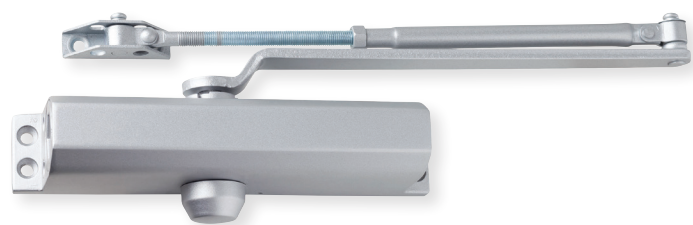
ALUM/689



DKBRZ/695

DCR8000 Series

Residential duty surface door closers



Specifications

- Grade 1, UL / UL 10C Listed (non-hold open arms)
ADA compliant at size 1, (180 deg - TJ and Pull Side)
- Adjustable spring size 1-4
- 9 1/16" x 3/4" mounting hole pattern
- Independent adjustment values: sweep speed, latch speed, and back-check
- Single piece, cast aluminum body
- Universal hardware pack

DCR8000-STD-LESS-RW/PA-ALUM	STD	Less	Rw/PA	ALUM
DCR8000-STD-LESS-RW/PA-DKBRZ	STD	Less	Rw/PA	DKBRZ

Arm types

Regular arm (Rw/PA): Non-handed, regular arm with adjustable forearm assembly to accommodate a range of doors and frame reveal conditions. Mounts hinge side, top jamb or parallel arm. PA shoe included to allow installation in a parallel arm configuration.

Finishes



ALUM/689



DKBRZ/695

DCH1000, DCM1000, DCL2000 and DCR8000 Series
Drop plates

Drop plates

Product description	Plate type	Finish
DCH1000P-DP18-ALUM	Pull side/Top jamb	ALUM
DCH1000P-DP18-DKBRZ	Pull side/Top jamb	DKBRZ
DCH1000P-DP18PA-ALUM	Parallel arm	ALUM
DCH1000P-DP18PA-DKBRZ	Parallel arm	DKBRZ
DCM1000P-DP18TJ-ALUM	Pull side/Top jamb	ALUM
DCM1000P-DP18TJ-DKBRZ	Pull side/Top jamb	DKBRZ
DCM1000P-DP18PA-ALUM	Parallel arm	ALUM
DCM1000P-DP18PA-DKBRZ	Parallel arm	DKBRZ
DCL2000P-DP18TJ-ALUM	Top jamb	ALUM
DCL2000P-DP18TJ-DKBRZ	Top jamb	DKBRZ
DCL2000P-DP18PA-ALUM	Parallel arm	ALUM
DCL2000P-DP18PA-DKBRZ	Parallel arm	DKBRZ

Note: DCL2000P drop plates are also compatible with DCR8000 series closers.

DCH1000 Series



DCH1000
Pull side/top jamb



DCH1000
Parallel arm

DCM1000 Series



DCM1000
Pull side/Top jamb



DCM1000
Parallel arm

DCL2000 Series

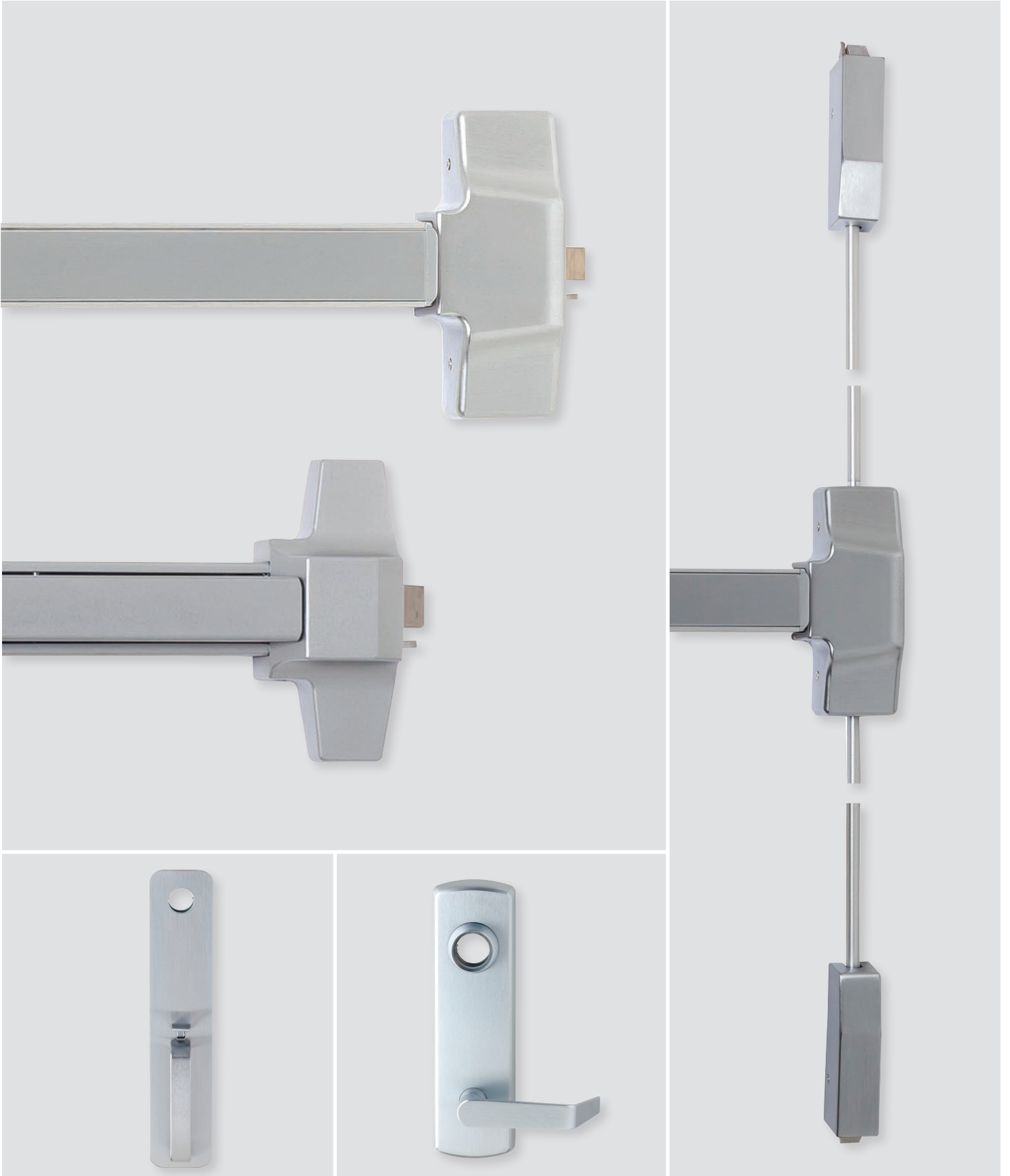


DCL2000
Top jamb



DCL2000
Parallel arm

Exit devices



ED1000 Series

Grade 1 exit devices



Specifications

- Grade 1, UL listed panic device, UL Listed 3-hour fire device
- Durable, aluminum mechanism case construction
- Deadlatching standard
- Devices fit standard 1 3/4" thick door
- 4 1/4" minimum stile width
- Hex Key Dogging standard on all panic devices
- All devices and trim are non-handed
- Universal hardware pack for wood and hollow metal
- Door widths: 36" device fits 29" to 36" door size; 48" device fits 33" to 48" door size

ED1000-R Series rim panic device

Product description	Trim function	Device length	Finish
ED1000-R-EO-3 FT-US26D	Exit Only	3'	US26D
ED1000-R-EO-4 FT-US26D	Exit Only	4'	US26D
ED1000-R-EO-3 FT-US32D	Exit Only	3'	US32D
ED1000-R-EO-4 FT-US32D	Exit Only	4'	US32D
ED1000-R-EO-3 FT-US10B	Exit Only	3'	US10B
ED1000-R-EO-4 FT-US10B	Exit Only	4'	US10B

ED1000-R-F Series rim fire exit hardware

Product description	Trim function	Device length	Finish
ED1000-R-F-EO-3 FT-US26D	Exit Only	3'	US26D
ED1000-R-F-EO-3 FT-US10B	Exit Only	3'	US10B

ED1000-V Series surface vertical rod panic device

Product description	Trim function	Device length	Door height	Finish
ED1000-V-EO-3 FT-7'DH-US26D	Exit Only	3'	7'	US26D
ED1000-V-EO-3 FT-7'DH-US10B	Exit Only	3'	7'	US10B

ED1000 Series

Trim and accessories

ED1000T-CLRM-R-ESC-NC-US26D	Escutcheon lever - Classroom	NC (requires mortise ¹)	US26D
ED1000T-CLRM-R-ESC-NC-US10B	Escutcheon lever - Classroom	NC (requires mortise ¹)	US10B
ED1000T-NL-R-ESC-NC-US26D	Escutcheon lever - Night latch	NC (requires rim)	US26D
ED1000T-NL-R-ESC-NC-US10B	Escutcheon lever - Night latch	NC (requires rim)	US10B
ED1000T-PASS-R-ESC-US26D	Escutcheon lever - Passage blank escutcheon	-	US26D
ED1000T-PASS-R-ESC-US10B	Escutcheon lever - Passage blank escutcheon	-	US10B
ED1000T-CLRM-TP-NC-US26D	Thumbpiece pull plate - Classroom	NC (requires mortise ¹)	US26D
ED1000T-CLRM-TP-NC-US10B	Thumbpiece pull plate - Classroom	NC (requires mortise ¹)	US10B
ED1000T-NL-HPUL-NC-US26D	Handle pull plate - Night latch	NC (requires rim)	US26D
ED1000T-NL-HPUL-NC-US10B	Handle pull plate - Night latch	NC (requires rim)	US10B

NC = No cylinder included

¹ Mortise cylinder with standard cam similar to Schlage B502-191 cam



Escutcheon lever -
Classroom



Escutcheon lever -
Night latch



Escutcheon lever -
Passage blank
escutcheon

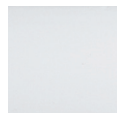


Thumbpiece
pull plate -
Classroom



Handle
pull plate -
Night latch

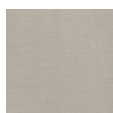
Finishes



US26D



US10B



US32D

ED1000-EXTRD-US26D	12"	US26D
ED1000-EXTRD-US10B	12"	US10B

ED2000 Series

Grade 2 exit devices



Specifications

- Grade 2, UL listed panic device, UL Listed 3-hour fire rim device
- Durable, steel mechanism case construction
- Deadlatching standard
- Devices fit standard 1 3/4" thick door
- 3 1/2" minimum stile width
- Hex Key Dogging standard on all panic devices
- Rim devices and trim are non-handed; Surface vertical devices easily field reversible
- Universal hardware pack for wood and hollow metal
- Door widths: 36" device fits 29" to 36" door size; 48" device fits 33" to 48" door size

ED2000-R Series Rim Panic Device

Product description	Trim function	Device length	Finish
ED2000-R-EO-3 FT-SP28	Exit Only	3'	SP28
ED2000-R-EO-4 FT-SP28	Exit Only	4'	SP28
ED2000-R-EO-3 FT-SP313	Exit Only	3'	SP313
ED2000-R-EO-4 FT-SP313	Exit Only	4'	SP313

ED2000-R-F Series Rim Fire Exit Device

Product description	Trim function	Device length	Finish
ED2000-R-F-EO-3 FT-SP28	Exit Only	3'	SP28
ED2000-R-F-EO-3 FT-SP313	Exit Only	3'	SP313

ED2000-V Series Surface Vertical Rod Panic Device

Product description	Trim function	Device length	Door height	Finish
ED2000-V-EO-3 FT-7'DH-SP28	Exit Only	3'	7'	SP28
ED2000-V-EO-3 FT-7'DH-SP313	Exit Only	3'	7'	SP313

ED2000 Series

Trim and accessories

Trim

ED2000T-CLRM-R-ESC-NC-SP28	Escutcheon lever - Classroom	NC (requires mortise ¹)	SP28
ED2000T-CLRM-R-ESC-NC-SP313	Escutcheon lever - Classroom	NC (requires mortise ¹)	SP313
ED2000T-NL-R-ESC-NC-SP28	Escutcheon lever - Night latch	NC (requires mortise ¹)	SP28
ED2000T-NL-R-ESC-NC-SP313	Escutcheon lever - Night latch	NC (requires mortise ¹)	SP313
ED2000T-NL-PULL-NC-SP28	Raised lip pull plate - Night latch	NC (requires rim)	SP28
ED2000T-NL-PULL-NC-SP313	Raised lip pull plate - Night latch	NC (requires rim)	SP313
ED2000T-DUM-PULL-SP28	Raised lip pull plate - Dummy	-	SP28
ED2000T-DUM-PULL-SP313	Raised lip pull plate - Dummy	-	SP313
ED2000T-CLRM-R-KDC-SP28	Key in lever round rose - Classroom	KDC	SP28
ED2000T-CLRM-R-KDC-SP313	Key in lever round rose - Classroom	KDC	SP313
ED2000T-NL-R-KDC-SP28	Key in lever round rose - Night latch	KDC	SP28
ED2000T-NL-R-KDC-SP313	Key in lever round rose - Night latch	KDC	SP313
ED2000T-CLRM-R-SFIC-SP28	Key in lever round rose - Classroom	Less SFIC	SP28
ED2000T-NL-R-SFIC-SP28	Key in lever round rose - Night latch	Less SFIC	SP28
ED2000T-NL-PULL-ESC-NC-SP28	Handle pull plate - Night latch	NC (requires rim)	SP28
ED2000T-NL-PULL-ESC-NC-SP313	Handle pull plate - Night latch	NC (requires rim)	SP313
ED2000T-DUM-PULL-ESC-SP28	Handle pull plate - Dummy	-	SP28
ED2000T-DUM-PULL-ESC-SP28	Handle pull plate - Dummy	-	SP313

NC = No cylinder included

KDC = KIL cylinder, Schlage C Keyway, Keyed differently

¹ Mortise cylinder with standard cam similar to Schlage B502-191 cam



Escutcheon lever -
Classroom/
Night latch



Raised lip
pull plate -
Night latch



Raised lip
pull plate -
Dummy



Key in lever round
rose - Classroom/
Night latch
Less SFIC not shown



Handle
pull plate -
Night latch



Handle
pull plate -
Dummy

Finishes



SP28



SP313

ED2000-EXTRD-SP28	12"	SP28
ED2000-EXTRD-SP313	12"	SP313

Notes

About Allegion

Allegion (NYSE: ALLE) is a global pioneer in safety and security, with leading brands like CISA®, Interflex®, LCN®, Schlage®, SimonsVoss® and Von Duprin®. Focusing on security around the door and adjacent areas, Allegion produces a range of solutions for homes, businesses, schools and other institutions. Allegion is a \$2 billion company, with products sold in almost 130 countries.

For more, visit www.allegion.com