



# Door Controls International™

## The solution to **Total Security**



## 1400 Series Electromagnetic Lock

The patented 1400 Series Electromagnetic Lock is universal for all types of applications, including outdoor use. The innovative design will reduce installation costs, and the compact size eliminates most requirements for special fillers.

The 1200 pounds holding force is designated for high-security areas, such as perimeter and restricted doors.



## Listings

- BHMA Certified to ANSI/BHMA A156.23-1999
- UL classified to meet ANSI/BHMA A156.23, Grade 1, Ranking: Over 1000 pounds holding force.
- UL Listed as a Releasing Device (SZNT).
- UL Listed as an Auxiliary Lock (GWXT).
- Listed by California State Fire Marshal.
- Accepted by NYC MEA 292-94-E.

*All Listings for Indoor and Outdoor Use.*

## Standard Features

<b>Holding Force:</b>	1200 pounds.
<b>Voltage:</b>	12 V or 24 VDC, field-selectable by powering the proper lead wires.
<b>Amperage:</b>	0.7 A at 12 VDC, .35 A at 24 VDC @ 70°F.
<b>Residual Magnetism:</b>	None.
<b>Inductive Kickback:</b>	Suppressed with UL Recognized circuit components to less than 53 V.
<b>Handing:</b>	Non – handed.
<b>Easy Installation:</b>	Surface applied and packaged with a special locator tool to eliminate measuring on the push side. The circuitry is encapsulated in the magnet housing, reducing all risk of both physical and environment damage, and allowing for a trouble-free hook-up of only two wires.
<b>Size:</b>	Magnet: 9.0" W x 2.25" H x 1.56" D. Armature: 9.0" W x 2.25" H x .56" D.
<b>Finishes:</b>	US28 & 313.

## Ordering Information:

### Push Side Mounting, Outswinging Doors

#### No. 1401

Dual Voltage 12/24 VDC.  
Electromagnetic Lock and Armature.  
No. BR0 Mounting Bracket.  
No. HP-1 Mounting Hardware Package.

### Pull Side Mounting, Inswinging Doors

#### No. 1405

Dual Voltage 12/24 VDC.  
Electromagnetic Lock and Armature.  
No. BS0: One Z Bracket & One T0 Bracket.  
No. HP-2 Mounting Hardware Package.

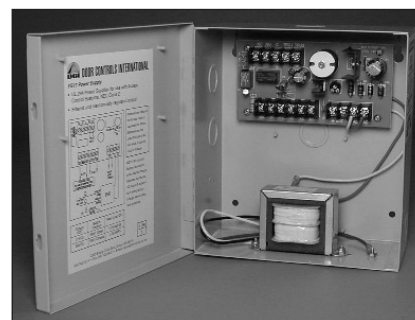
# 17 Series Power Supply



The 17 Series Power Supply provides versatility in controlling electrical applications that require a UL Listing for Access Controls, as well as, an interface with fire alarm control panels and fire protection systems. DCI's 17 Series is a power-limited power supply that converts 120 VAC / 60 Hz input into two individual overcurrent protected 12 VDC or 24 VDC outputs. Specify with electromagnetic locks, electrified exit devices, and or access controls.

Install in accordance with NFPA 70 The National Electrical Code and local codes.

UL Listed for Access Controls UL294, NEC Class 2.



## Standard Features

<b>Input:</b>	120 VAC / 60 Hz, 0.6 A.
<b>Output:</b>	12 or 24 VDC at 1.75 A, field-selectable. Filtered and electronically regulated DC outputs. Overcurrent protection on each output circuit. One NO and one NC, externally triggered by Fire Alarm Relay if desired. Auxiliary DC output circuit, not triggered, overcurrent protected.
<b>Monitors:</b>	AC input monitored by SPDT relay. Rated 1 A @ 28 VDC. DC output monitored by SPDT Relay. Rated 1 A @ 24 VDC.
<b>Fire Alarm:</b>	Terminals for Fire Alarm Relay connection.
<b>Battery Charger:</b>	A built-in charging circuit automatically charges backup batteries.
<b>Enclosure:</b>	PS17 – NEMA 1, Dimensions: 8.5" H x 7.5" W x 3.5" D. Wt. 6 lb. PSL17 – NEMA 1, Dimensions: 16" H x 12" W x 5" D. Wt. 12 lb.
<b>Finish:</b>	Powder-coated gray.

## Ordering Information

<b>PS17</b>	12 or 24 VDC at 1.75 A. Keyed cabinet lock, and terminals for external battery backup.
<b>PSL17</b>	12 or 24 VDC at 1.75 A. Keyed cabinet lock, and optional internal battery backup.
<b>PS17-TD2</b>	<b>Time Delay system for all Special Locking Arrangements.</b> <b>Delayed Egress:</b> Nuisance Delay field-selectable for 0 or 1 second, followed by 15 or 30 seconds field-selectable delay before relay unlock activation. Deactivation only by manual reset. Overridden by Fire Alarm for instant unlock. Specify PS17-TD2-15 for UBC. <b>Access-Controlled Egress:</b> Instant relay (unlock) activation followed by 30 or 45 seconds field-selectable delay before automatic (relock) deactivation.
<b>BBU-5</b>	5.0 Ah @ 12 V, 1 Battery, and Cable Kit 4.0" H x 3.50" W x 2.75" D. Wt. 3.63 lb.
<b>BBU-5/2</b>	5.0 Ah @ 24 V, 2 Batteries, and Cable Kit.
<b>BBU-7</b>	7.2 Ah @ 12 V, 1 Battery, and Cable Kit 3.75" H x 5.88" W x 2.50" D. Wt. 5.25 lb.
<b>BBU-7/2</b>	7.2 Ah @ 24 V, 2 Batteries, and Cable Kit.
<b>BBU-12</b>	12 Ah @ 12 V, 1 Battery, and Cable Kit 3.75" H x 5.88" W x 3.75" D. Wt. 9.0 lb.
<b>BBU-12/2</b>	12 Ah @ 24 V, 2 Batteries, and Cable Kit.

## Specify the 17 Series for Multiple Openings

PS17 & PSL17		12 VDC	PS17 & PSL17		24 VDC
1401 Electromagnetic Lock		Up to 2	1401 Electromagnetic Lock		Up to 4
1300 Series Electrified Rim Exit Device		Up to 2	1300 Series Electrified Rim Exit Device		Up to 4
Or any combination of the above		Up to 2	Or any combination of the above		Up to 4

Additional current, 250 mA at 70°F at either voltage, is available for access controls such as motion detectors, card readers, and switch illumination.

# PSL30 Power Supply

The PSL30 Power Supply provides versatility in controlling electrical applications that require a UL Listing for Access Controls, as well as, an interface with fire alarm control panels and fire protection systems. DCI's PSL30 is a power limited power supply that will convert 120 VAC / 60 Hz input into five individual overcurrent protected 12 VDC or 24 VDC outputs. Specify with electromagnetic locks, electrified exit devices, and access controls for multiple zones.

Install in accordance with NFPA 70 National Electrical Code and local codes.

UL Listed for Access Controls UL294, NEC Class 2.



## Standard Features

<b>Input:</b>	115 VAC / 60 Hz 1-Phase, 1.45 A.
<b>Output:</b>	12 VDC at 4.0 A or 24 VDC at 3.0 A, field-selectable. Five filtered and electronically regulated DC outputs, triggered by Fire Alarm Relay if desired. Overcurrent protection on each output circuit. One NO and one NC terminal for each output circuit.
<b>Monitors:</b>	AC input monitored by SPDT relay. Rated 1 A @ 30 VDC. Battery input monitored by SPDT relay. Rated 1 A @ 30 VDC. DC output monitored by SPDT relay. Rated 1 A @ 30 VDC.
<b>Fire Alarm:</b>	Terminals for Fire Alarm Relay connection.
<b>Battery Charger:</b>	A built-in charging circuit automatically charges backup batteries.
<b>Enclosure, Keyed</b>	NEMA 1 with keyed cabinet lock and knockout.
<b>Dimensions:</b>	16" H x 12 " W x 5 " D. Wt. 12 lb.
<b>Finish:</b>	Powder-coated Gray.

## Ordering Information

<b>PSL30</b>	12 at 4.0 A or 24 VDC at 3.0 A. Keyed cabinet lock, and optional internal battery backup.
--------------	---

### Options

<b>BBU-5</b>	5.0 Ah @ 12 V, 1 Battery, and Cable Kit 4.0" H x 3.50" W x 2.75" D. Wt. 3.62 lb.
<b>BBU-5/2</b>	5.0 Ah @ 24 V, 2 Batteries, and Cable Kit (or 10 Ah at 12 V).
<b>BBU-7</b>	7.2 Ah @ 12 V, 1 Battery, and Cable Kit 3.75" H x 5.88" W x 2.50" D. Wt. 5.50 lb.
<b>BBU-7/2</b>	7.2 Ah @ 24 V, 2 Batteries, and Cable Kit (or 14.4 Ah at 12 V).
<b>BBU-12</b>	12 Ah @ 12 V, 1 Battery, and Cable Kit 3.75" H x 5.88" W x 3.75" D. Wt. 9.0 lb.
<b>BBU-12/2</b>	12 Ah @ 24 V, 2 Batteries, and Cable Kit (or 24 Ah at 12 V).

## Specify the PSL30 for Multiple Openings

PSL30	12 VDC	PSL30	24 VDC
1401 Electromagnetic Lock	Up to 5	1401 Electromagnetic Lock	Up to 8
1300 Series Electrified Rim Exit Device	Up to 4	1300 Series Electrified Rim Exit Device	Up to 7
Or 2 each; or any combination of the above	Up to 4	For 4 each; or any combination of the above	Up to 7

Additional current is available for access controls, such as motion detectors, card readers, and switch illumination: With maximum 24 VDC systems, 140 mA at 70°F; and for maximum 12 VDC systems, 400 mA at 70°F.

# Egress Switches / Supervised Entry



All models are UL Listed and Internationally approved. The 200 and 300 Series heavy-duty key switches and push buttons are ideal with any electrical locking device to provide security for both restricted areas and supervised entrances.

## 200 Series Key Switches



### Type Ratings Cylinder

### LED

### Security

Momentary or Alternating with 22 GA pigtail leads.

Switch ratings – 6 A at 28 VDC or 250 VAC.

Specify 1-1/8" or 1-1/4" Mortise cylinder with any cam. Adjustable switch position for cylinder compatibility. Cylinder not supplied.

Red or Green bi-color LED to monitor status of the alternating key switch.

22 gage 6" pigtail leads. Draws 40 mA at 12 VDC or 20 mA at 24 VDC.

1/4" thick solid aluminum escutcheon, recessed for key cylinder, and supplied with spanner head screws.

### Ordering Information

**200 x 28/313**

Momentary; SPDT 3.0" standard width Key Switch.

**200N x 28/313**

Momentary; SPDT 1.75" narrow width Key Switch.

**210 x 28/313**

Alternating; SPDT 3.0" standard width Key Switch.

**210N x 28/313**

Alternating; SPDT 1.75" narrow width Key Switch.

### Options

**KTD-1**

Pneumatic Time Delay, adj. from 1 to 320 seconds, DSPST.

**KTD-2**

Electronic Time Delay adj. from 1 to 60 seconds; 12 or 24 VDC, SPDT. (KTD-2 uses a CY-1/2 3" x 2" switch box).

**LED**

Bi-color Red or Green "ON" indicator. Field-selectable color.

**WR**

Weather Resistant Escutcheon Plate.

## 300 Series Push Buttons



### Security

1/4" thick aluminum escutcheon, supplied with spanner head screws.

### Ordering Information

**300 x 28/313**

Momentary; DSPST NO & NC 3.0" standard width Blue Push Button.

**300N x 28/313**

Momentary; DSPST NO & NC 1.75" narrow width Blue Push Button.

**310 x 28/313**

Maintained; DSPST NO & NC 3.0" standard width Blue Push Button.

**310N x 28/313**

Maintained; DSPST NO & NC 1.75" narrow width Blue Push Button.

### Options

**Exit**

Exit Sign for Push Button.

**LP-12V**

Lamp to illuminate Push Button; 14 V @ 80mA for 12 V circuits.

**LP-24V**

Lamp to illuminate Push Button; 28 V @ 40mA for 24 V circuits.

**PTD**

Electronic Time Delay adj. from 1 to 60 seconds; 12 or 24 VDC, SPDT.

## Mushroom Buttons 1.75" Button Diameter Oil & Watertight



### Security

1/4" thick aluminum escutcheon, supplied with spanner head screws.

### Ordering Information

**320 x 28/313**

Momentary; DSPST NO & NC 3.0" standard width Exit Red Push Button.

**320N x 28/313**

Momentary; DSPST NO & NC 1.75" narrow width Exit Red Push Button.

### Option

**PTD**

Electronic Time Delay adj. from 1 to 60 seconds; 12 or 24 VDC, SPDT.

### Ordering Information

**340 x 28/313**

Momentary; DSPST NO & NC 3.0" standard width Red Push Button.

**340N x 28/313**

Momentary; DSPST NO & NC 1.75" narrow width Red Push Button.

### Option

**PTD**

Electronic Time Delay adj. from 1 to 60 seconds; 12 or 24 VDC, SPDT.





# PANNEX™ Rim Exit Devices

## 120 Series PANNEX™ Electric Push Bar

The 120 Series Electric Push Bar is used to activate controls in a means of egress. This device is our Grade 1 Rim Exit Device, but minus the latch & strike assembly.



### Ordering Information

**Prefix L for 48" Devices.**

<b>120A x SS1 x 28/313</b>	Electric Push Bar, and SPDT Signal Switch.
<b>120D x SS1 x 28/313</b>	Electric Push Bar with Dogging, and SPDT Signal Switch.
<b>120A x SS2 x 28/313</b>	Electric Push Bar, and two SPDT Signal Switches.
<b>120D x SS2 x 28/313</b>	Electric Push Bar with Dogging, and two SPDT Signal Switches.

## 1200 Series PANNEX™ Rim Exit Device

The 1200 Series is specified when high security and safe means of egress are a priority. Our patented ANSI/BHMA Grade 1 device is UL Listed for 3-hour fire doors, and can be supplied with signal switches and alarms. The 1200 Series is recommended for access-controlled applications on fire doors, and to maintain security in the event of a power failure.



### Ordering Information

**Prefix L for 48" Devices.**

<b>1200A x 28/313</b>	Rim Exit Device for Exit Only.
<b>1200C x 28/313</b>	Rim Exit Device with Cylinder Dogging.
<b>1200D x 28/313</b>	Rim Exit Device with Cam Lock Dogging.
<b>1200F x 28/313</b>	Rim Exit Device for up to 3-hour-rated Fire Doors.

## 1300 Series PANNEX™ Rim Exit Device

The 1300 Series is specified for a high-security means of egress with access-controlled entry. Our patented ANSI/BHMA Grade 1 device includes a 24 VDC (12 VDC optional) continuous solenoid to provide a remote unlock feature for controlled entry. When operated by a 24 VDC, less than 400 mA is required to unlock the device or to dog it unlocked. Fire-rated devices must be powered through a fire alarm system relay.



### Ordering Information

**Prefix L for 48" Devices. Optional 12 VDC is available.**

<b>1300A x 28/313</b>	24 VDC Electrified Rim Exit Device.
<b>1300C x 28/313</b>	24 VDC Electrified Rim Exit Device with Cylinder Dogging.
<b>1300D x 28/313</b>	24 VDC Electrified Rim Exit Device with Cam Lock Dogging.
<b>1300F x 28/313</b>	24 VDC Electrified Rim Exit Device for up to 3-hour-rated Fire Doors.

## Optional PANNEX™ Signal Switches

SPDT or DPDT signal switches are installed in the housing track of the device to remove power from an electromagnetic lock, or to power remote alarms, electric locks, and other security devices. Depression of the push bar momentarily activates the switches.

<b>SS1</b>	SPDT Form C Signal Switch.
<b>SS2</b>	Two SPDT Form C Signal Switches.
Switch Ratings:	3 A @ 30 VDC with inductive load. UL Recognized, CSA Approved.
	4 A @ 30 VDC with resistive load. UL Recognized, CSA Approved.
Inrush Current:	NC, 20 A maximum with any type load.
	NO, 10 A maximum with any type load.

# Alarms for PANNEX™ Rim Exit Devices



Alarm modules are interchangeable for all PANNEX™ Rim Exit Devices, and can either be factory or field installed in the housing track of the unit. The alarm is armed by key, then activated by depressing the push bar, and remains on until reset by key.

## Ordering Information

<b>10A x 28/313</b>	Alarm Module, powered by one 9 VDC battery.
<b>20A x 28/313</b>	Alarm Module, powered by remote 12 to 24 VDC, one 9 VDC battery backup.
<b>30A x 28/313</b>	Alarm Module, powered by remote 12 to 24 VDC. D suffix for cam lock dogging. e.g. 10D x 28

## Alarm Switches

<b>SS1-A</b>	SPDT Form C Alarm Switch.
<b>SS2-A</b>	Two SPDT Form C Alarm Switches. Switch Ratings: 0.5 A @ 28 VDC or 115 VAC.

## DL418 Door Loop

The DL418 armored door loop is 18" long with 1/4" I.D. flexible steel conduit, and an attractive steel housing on each end. Predrilled for wires and concealed mounting screws. Specify for transferring electrical current between door and frame.

<b>Capacity:</b>	4 – 18 AWG stranded, PVC insulated (600 V 105° C, UL1015) conductors, or 7 – 20 or 18 AWG stranded, .015 thick PVC insulated (300 V 105° C, UL1569) conductors, or 10 – 22 AWG stranded, .015 thick PVC insulated (300 V 105° C, UL1569) conductors. Wires not included.
------------------	---

<b>Finishes:</b>	Aluminum (689), Duranodic (690) and Gold (706) Powder-Coat.
------------------	---

## Ordering Information

<b>DL418 x 28/313/28G</b>	18" long Armored 1/4" I.D. flexible steel conduit.
---------------------------	--



## 400 Series Motion Detector

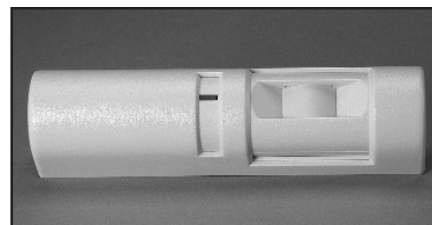
The 400 Series passive infrared detector was designed for "Request to Exit" applications. UL listed as an access control device under the UL 294 standard. The 400 Series may be used in conjunction with our electromagnetic lock, to unlock the door when motion is detected and relock after a brief interval of 30 seconds minimum, which complies with the "Access-Controlled Egress Doors" section of the building codes.

## Specifications

<b>Input:</b>	12 or 24 V field-selectable AC or DC, maximum of 45 mA AC or 38 mA DC.
<b>Output:</b>	DPDT Relay contacts, rated 2 A at 30 VDC (resistive). Relay activates when motion is detected and remains activated until "latch time" expires, then deactivates. An external LED lights during activation for ease in aiming.
<b>Coverage:</b>	8 ft x 10 ft when mounted minimum of 7 ft high. 10 ft x 13 ft when mounted on 8 ft ceilings.
<b>Temperature Limits:</b>	Both storage and operation: -20°F to +120°F.
<b>RFI Immunity:</b>	No alarm or setup on critical frequencies from 26 to 1000 MHz at 50 V/m.
<b>Standby Power:</b>	Provide 38 mAh per hour of desired standby from an external source.
<b>Dimensions:</b>	1.5" H x 6.25" W x 1.5" D. Wt. 6 oz.

## Ordering Information

<b>400B</b>	Passive Infrared Detector in a Black Finish.
<b>400G</b>	Passive Infrared Detector in a Light Gray Finish.



# Kits for Delayed Egress & Access-Controlled Systems

## DES – 1 Kit

## Delayed Egress System

1401  
PS17-TD2

Push side; UL Classified Grade 1 Electromagnetic Lock.  
12/24 VDC @ 1.75 A. Power Supply.  
Time Delay; Field Select 15 or 30 seconds.  
Nuisance Delay; Field Select 0 or 1 second.  
Electric Switch Bar with Alarm Module.  
18" Armored 1/4" I.D. flexible steel conduit Door Loop.  
Sign for Building Code conformance.

120A x 30DES  
DL418  
DES-WS-15/30

### Options

210  
210N  
LED

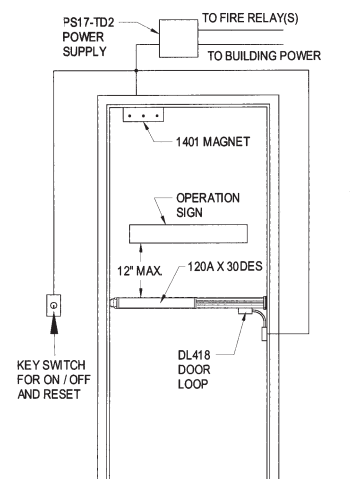
### Specify

DES-1-15 Kit  
DES-1F Kit

### Recommended Key Switch for ON-OFF and RESET

Alternating; SPDT, 3.0" Key Switch.  
Alternating; SPDT, 1.75" Key Switch.  
Bi-color Red or Green "ON" indicator. Field-selectable color.

Uniform Building Code compliant.  
3-Hour Rating for Fire Doors.



## ACE – 1 Kit

## Access Controlled Egress System

1401  
PS17-TD2

Push side; UL Classified Grade 1 Electromagnetic Lock.  
12/24 VDC @ 1.75 A. Power Supply.  
Relock Delay; Field Select 30 or 45 seconds.  
P.I.R. Motion Detector.

400

### Options

300 x LP-12/24V x Exit  
300N x LP-12/24V x Exit  
320  
320N

### Exit Switch is required for Code Compliance

Momentary; DSPST, 3.0" Exit Blue Illuminated Push Button.  
Momentary; DSPST, 1.75" Exit Blue Illuminated Push Button.  
Momentary; DSPST, 3.0" Exit Red Mushroom Push Button.  
Momentary; DSPST, 1.75" Exit Red Mushroom Push Button.

### Entry Key Switch

200  
200N  
210  
210N

Momentary; SPDT, 3.0" Key Switch.  
Momentary; SPDT, 1.75" Key Switch.  
Alternating; SPDT, 3.0" Key Switch.  
Alternating; SPDT, 1.75" Key Switch.

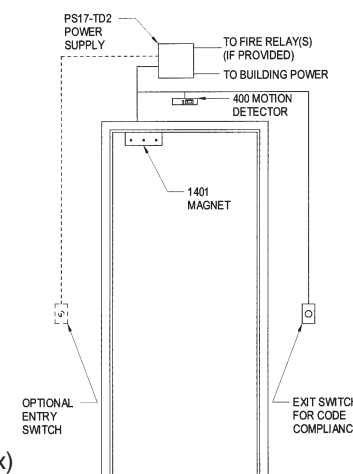
KTD-1  
KTD-2

Pneumatic Time Delay, adjustable 1 to 320 seconds.  
Electronic Time Delay, adj. from 1 to 60 seconds;  
12 or 24 VDC, SPDT. (KTD-2 uses a CY-1/2 3" x 2" switch box)  
Bi-color Red or Green "ON" indicator. Field-selectable color.  
Weather-Resistant Escutcheon Plate.

LED  
WR

02P-LTD

Outside Pull with Escutcheon.



## AC – 1 Kit

## Access Controlled System

1401  
PS17  
120A-SS1  
DL418

Push side; UL Classified Grade 1 Electromagnetic Lock.  
12/24 VDC @ 1.75 A. Power Supply.  
Non-latching Electric Switch Bar with SPDT Signal Switch.  
18" Armored 1/4" I.D. flexible steel conduit Door Loop.

### Optional Entry Key Switch

200  
200N  
210  
210N

Momentary; SPDT, 3.0" Key Switch.  
Momentary; SPDT, 1.75" Key Switch.  
Alternating; SPDT, 3.0" Key Switch.  
Alternating; SPDT, 1.75" Key Switch.

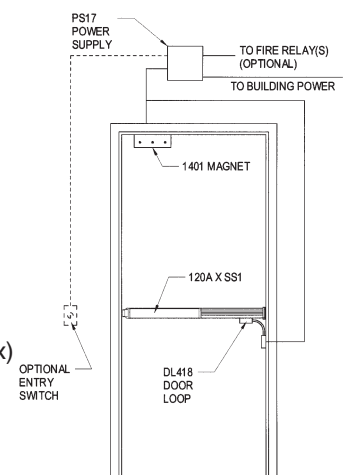
KTD-1  
KTD-2

Pneumatic Time Delay, adjustable 1 to 320 seconds.  
Electronic Time Delay, adj. from 1 to 60 seconds;  
12 or 24 VDC, SPDT. (KTD-2 uses a CY-1/2 3" x 2" switch box)  
Bi-color Red or Green "ON" indicator. Field-selectable color.  
Weather-Resistant Escutcheon Plate.

LED  
WR

02P-LTD

Outside Pull with Escutcheon.



Consult factory for special code requirements.