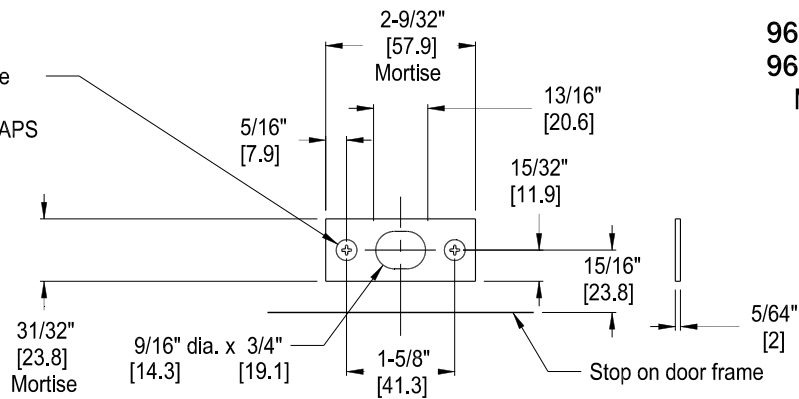


# No. 960 Series Automatic Flush Bolts For Wood Doors - Preparation

Item No. 960, 962

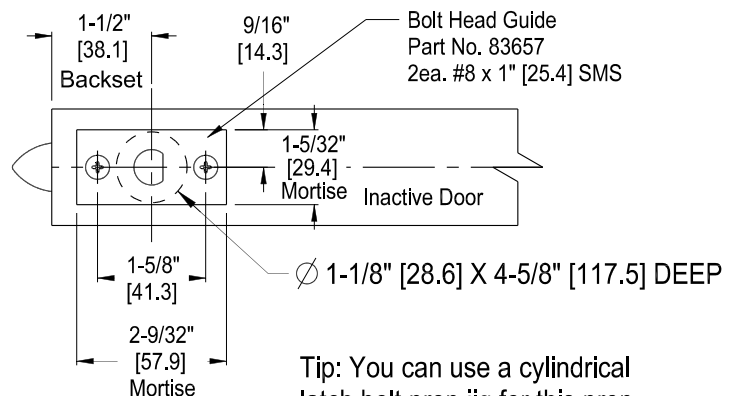
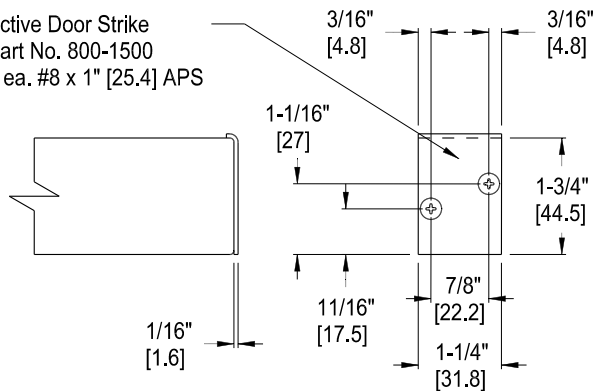
960 = Single Bolt  
962 = Set of Bolts  
Non - Handed

Frame and Sill Strike  
Part No. 83666  
2 ea. #8 x 1" [25.4] APS  
with rawl plugs



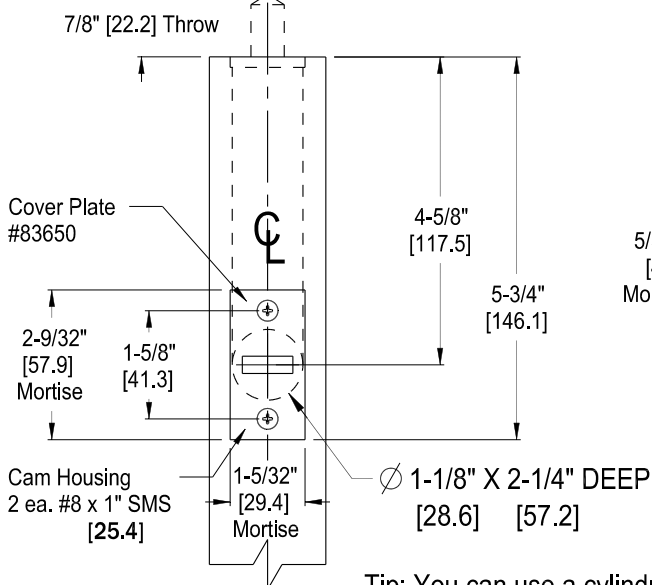
**REQUIRES 1-1/2" [38.1] BACKSET**

Active Door Strike  
Part No. 800-1500  
2 ea. #8 x 1" [25.4] APS

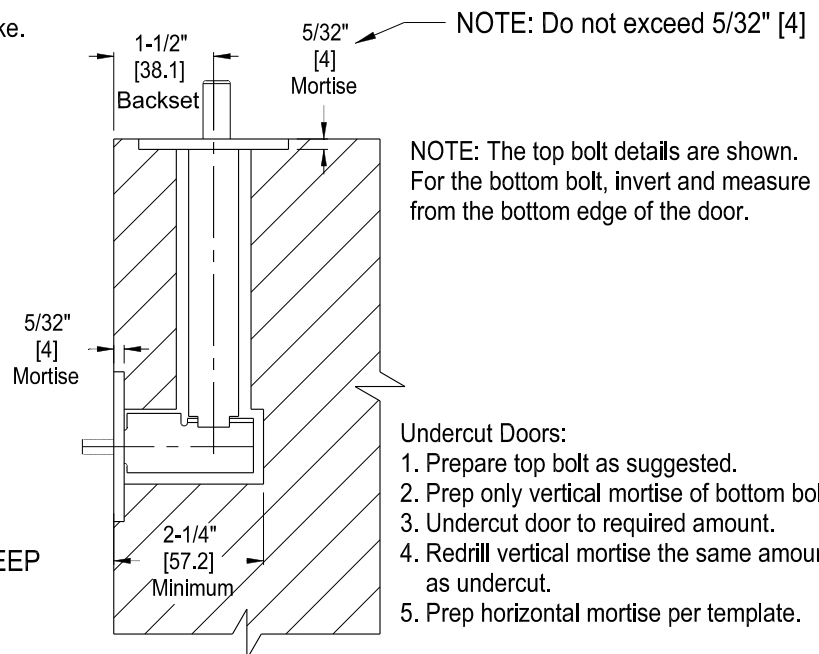


Tip: You can use a cylindrical  
latch bolt prep jig for this prep.

3/32" [2.4] thick shims  
are available for  
the active door strike.  
Part No. 800-1600



Tip: You can use a cylindrical  
latch bolt prep jig for this prep.



NOTE: The top bolt details are shown.  
For the bottom bolt, invert and measure  
from the bottom edge of the door.

Undercut Doors:

1. Prepare top bolt as suggested.
2. Prep only vertical mortise of bottom bolt.
3. Undercut door to required amount.
4. Redrill vertical mortise the same amount as undercut.
5. Prep horizontal mortise per template.

Dimensions in [ ] denotes millimeters

**SEE REVERSE SIDE FOR INSTALLATION**

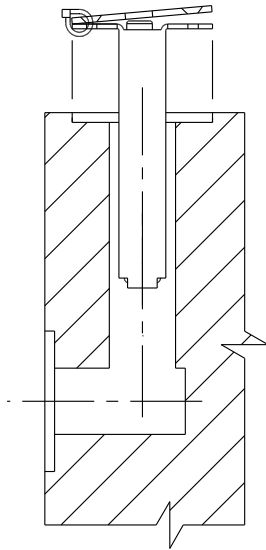
DCI reserves the right to make product changes.  
Visit [www.doorcontrols.com](http://www.doorcontrols.com) for the latest template  
changes or call 1-800-742-3634.



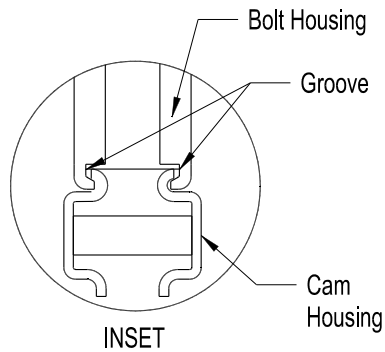
**DOOR CONTROLS  
INTERNATIONAL™**  
2362 Bishop Circle East  
Dexter, MI 48130 U.S.A.

**Bolt Installation****PATENTED**

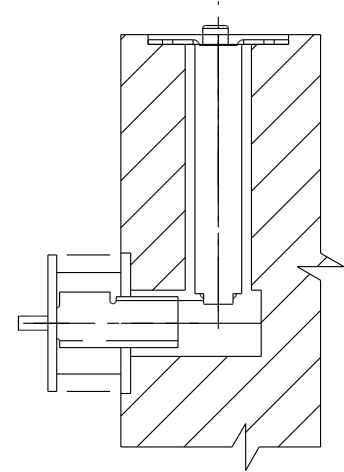
1. Remove Tie and install Bolt Housing.

**DO NOT SECURE**

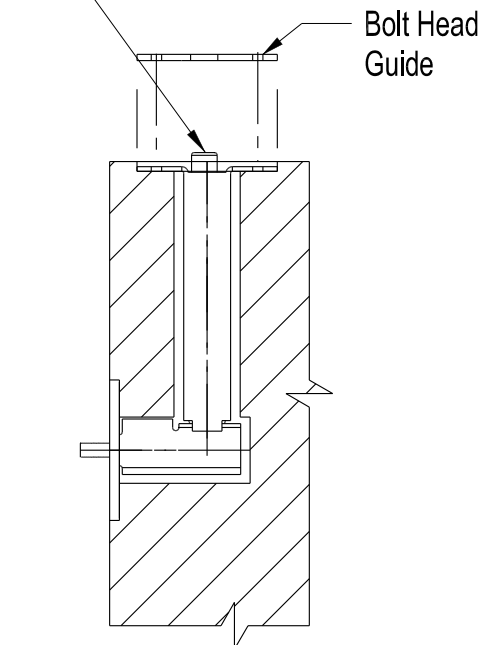
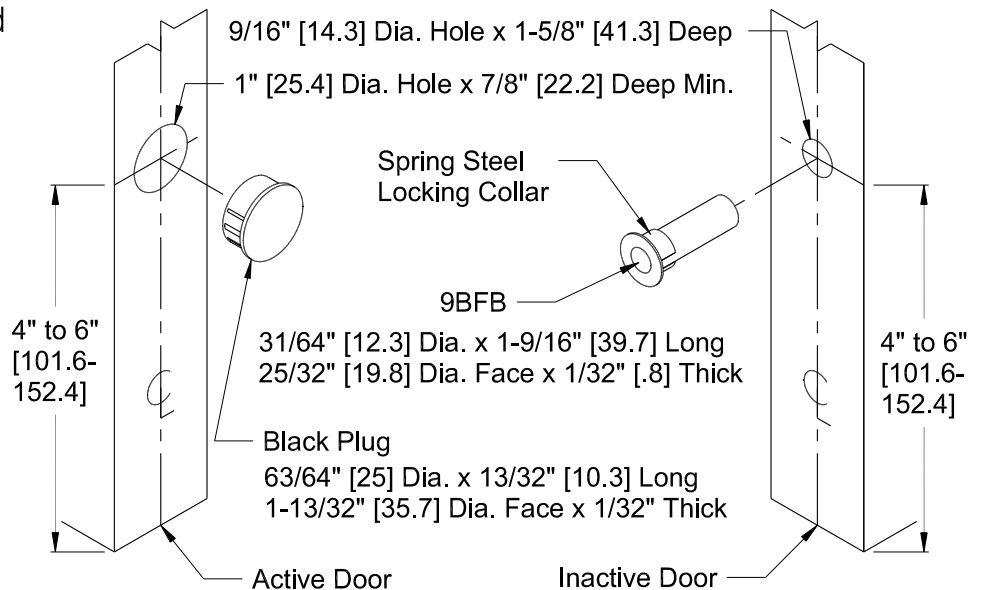
2. Install Cam Housing into grooves of Bolt Housing. See Inset.  
Secure Trim Plate with 2 ea. #8 APS



If Cam Housing rotates,  
it is not engaged into  
the Bolt Housing.



3. Adjust Bolt Head 0" to 1/2" [12.7]  
above Bolt Head Guide.  
Secure with 2 ea. #8 APS

**9BFB Mounting Instructions**

**IMPORTANT:** The 9BFB will project during a fire.  
Do not cover with any edge mounted door hardware.

Dimensions in [ ] denotes millimeters



**DOOR CONTROLS  
INTERNATIONAL™**

2362 Bishop Circle East  
Dexter, MI 48130 U.S.A.