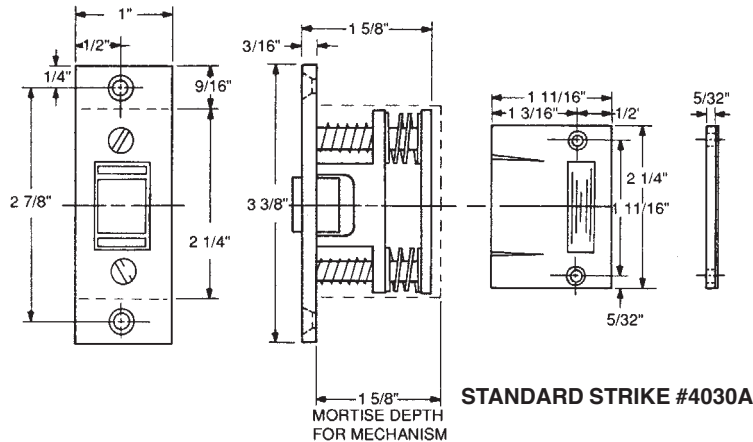


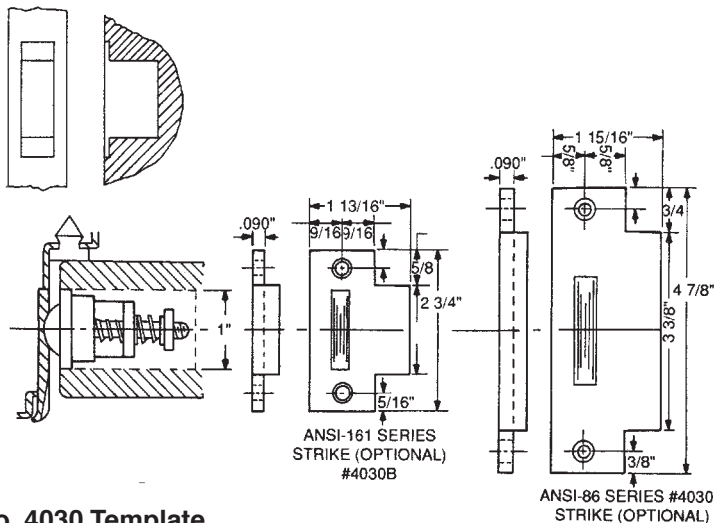
ADJUSTABLE ROLLER LATCH

E-1



STANDARD STRIKE #4030A

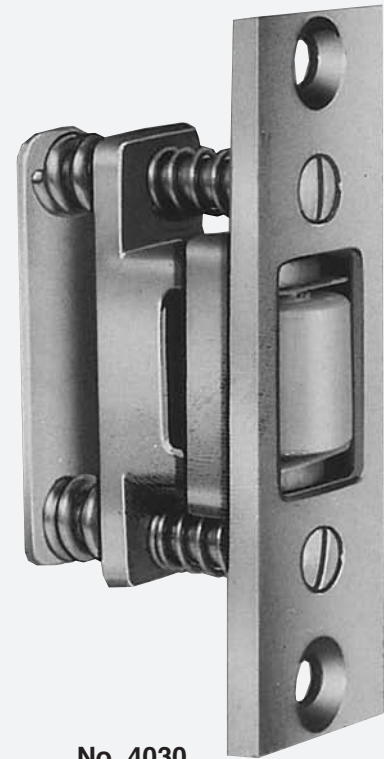
MORTISE DETAIL



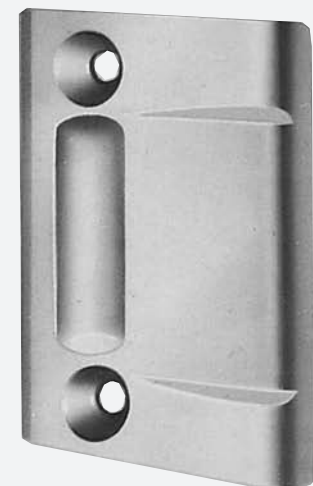
ANSI-161 SERIES
STRIKE (OPTIONAL)
#4030B

ANSI-86 SERIES #4030C
STRIKE (OPTIONAL)

No. 4030 Template



No. 4030



No. 4030A

Adjustable roller latches are a versatile piece of hardware which can be used for a variety of applications. Roller latch easily adjusts to provide the desired contact between roller and applicable frame strike. Latch pressure is adjusted without removing the roller latch from the door.

Adjustable roller latches are specified when doors are furnished with push/pull hardware, and when quiet closing and opening of the door is desired.

The 4030 latch is supplied with No. 4030A cast strike as standard; a wrought roller strike No. 4030B for ANSI-161 frame cut out, and No. 4030C wrought roller strike for ANSI-86 frame cut out are available options.

Stock Finishes:

US Standard: US3, US4, US10, US10B, US26, US26D
BHMA Standard: 605, 606, 612, 613, 625, 626

Conforms to ANSI/BHMA 156.16

Printed in the U.S.A. - © 2009

