

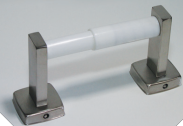


# Product Catalog



# CWECO

Commercial Washroom Equipment Company INC.



1156 W. 135th Street Gardena, CA 90247

Phone: 800-292-9326 310-538-9440

Fax: 800-232-9326 310-715-9188

cwecosales@gmail.com www.cwecoinc.com








Shower Rods and Flanges.....	3
Zinc Die-Cast Bathroom Accessories.....	5
Stainless Steel Accessories.....	9
Commercial Bathroom Accessories.....	12
Ashtrays.....	16
Soap Dispensers.....	17
Grab Bars/Shelves/Mirrors.....	19



# Table of Contents



Table of Contents







## **Commercial Washroom Equipment Company (CWECO)**

is a formidable name in the field of washroom equipment. In 1966, David Gursky formed Saferail whose main business was to manufacture Grab Bars. Subsequently in 1975 the bath accessory product line was purchased in an agreement with Continental Manufacturing company and CWECO was formed. In the following years, Saferail and CWECO were marketed under their respective names, but as the product lines expanded to a full range catalog, the companies were combined and brought under the name CWECO.

CWECO features contemporary concealed mount bathware and combines the quality of plated Zamak with simple to install exposed-mount bathware. Our shower rods, grab bars, soap dispensers and complete line of hotel/motel and commercial washroom accessories are sleek, functional designs and intended to meet the most stringent standards for public facility usage.

We have a wide range of products aimed at catering the entire gamut of our customer needs. Our core competencies are Timely Delivery, Excellent Quality and Fair Pricing. Customer satisfaction is our main motto, and we strive to maximize it through innovative programs like dropshipments to job sites directly.





### Item #101

*Adjustable Die-Cast  
Shower Rod Flange*  
**Dimensions: 1"**



### Item #103

*Die-Cast Extended  
Die-Cast  
Shower Rod Flange*  
**Exposed Mounting Screws  
Dimensions: 1"**



### Item #107

*Steel Shower  
Rod Flange*  
**Concealed Mounting Screws  
Dimensions: 1"**



### Item #CW107A

*Die-Cast Shower  
Rod Flange*  
**Concealed Mounting Screws  
Dimensions: 1"**



### Item #CWCP

*Curtain Pin*  
**Nickel Plated**



### Item #CWCP-SS

*Curtain Pin*  
**Stainless Steel**

# Shower Rods and Flanges

Shower Rods and Flanges







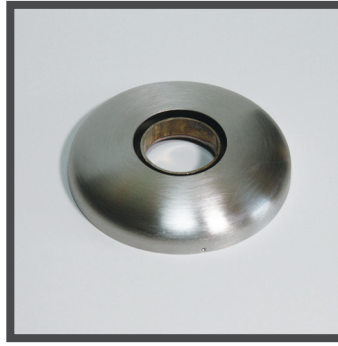
### Item #104A

*Stainless Steel*  
*Shower Rod Flange*  
**Exposed Mounting Screws**  
**Dimensions:** 1"



### Item #105A

*Stainless Steel*  
*Shower Rod Flange*  
**Exposed Mounting Screws**  
**Dimensions:** 1 1/4"



### Item #108S

*Stainless Steel*  
*Shower Rod Flange*  
**Concealed Mounting Screws**  
**Dimensions:** 1"



### Item #109S

*Stainless Steel*  
*Shower Rod Flange*  
**Concealed Mounting Screws**  
**Dimensions:** 1 1/4"



### Item #112

*Stainless Steel*  
*Shower Rod*  
**Dimensions:** 1" x .018" x 60"

### Item #112A

*Stainless Steel*  
*Shower Rod*  
**Dimensions:** 1" x .018" x 72"

### Item #113

*Stainless Steel*  
*Shower Rod*  
**Dimensions:** 1" x .035" x 60"

### Item #113A

*Stainless Steel*  
*Shower Rod*  
**Dimensions:** 1" x .035" x 72"

### Item #114

*Stainless Steel*  
*Shower Rod*  
**Dimensions:** 1" x .049" x 60"

### Item #114A

*Stainless Steel*  
*Shower Rod*  
**Dimensions:** 1" x .049" x 72"

### Item #115

*Stainless Steel*  
*Shower Rod*  
**Dimensions:** 1 1/4" x .049" x 60"

### Item #115A

*Stainless Steel*  
*Shower Rod*  
**Dimensions:** 1 1/4" x .049" x 72"



### Item #751B

*Square Towel  
Bar Bracket*

**Use With:** 3/4" Square Towel Bar  
**Towel Bars Available In**  
**Aluminum & Stainless Steel**

**Lengths:** 18", 24", 30", 36"

**Bracket:** Chrome Plated Zamak  
(Zinc/Aluminum)

**Screw Mount:** Concealed

**Projects:** 3 3/4"



### Item #753

*Double Robe Hook*

**Chrome Plated Zamak**  
(Zinc/Aluminum)

**Screw Mount:** Concealed

**Projects:** 1 1/2"



### Item #754

*Single Robe Hook*

**Chrome Plated Zamak**  
(Zinc/Aluminum)

**Screw Mount:** Concealed

**Projects:** 2 1/4"



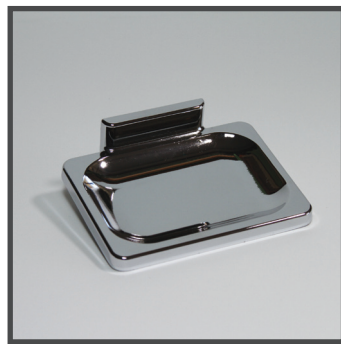
### Item #757

*Toothbrush &  
Tumbler Holder*

**Chrome Plated Zamak**  
(Zinc/Aluminum)

**Screw Mount:** Concealed

**Projects:** 3"



### Item #759

*Soap Dish*

**Chrome Plated Zamak**  
(Zinc/Aluminum)

**Screw Mount:** Concealed

**Projects:** 3"



### Item #761

*Toilet Tissue Holder*

**Roller:** Chrome Plated Plastic

**Brackets:** Chrome Plated Zamak  
(Zinc/Aluminum)

**Screw Mount:** Concealed

**Projects:** 3 1/4"

# Zinc Die - Cast Bathroom Accessories

Zinc Die - Cast  
Bathroom Accessories



## Item #762

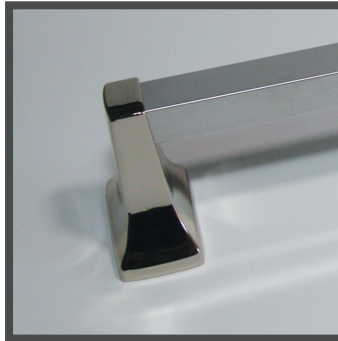
*Toilet Tissue Holder*

**Roller:** White Plastic

**Brackets:** Chrome Plated Zamak  
(Zinc/Aluminum)

**Screw Mount:** Concealed

**Projects:** 3 1/4"



## Item #701B

*Square Towel Bar  
Bracket*

**Use With:** 3/4" Square Towel Bar

**Towel Bars Available  
In Aluminum & Stainless Steel**

**Lengths:** 18", 24", 30", 36"

**Bracket:** Chrome Plated Zamak  
(Zinc/Aluminum)

**Screw Mount:** Concealed

**Projects:** 3"



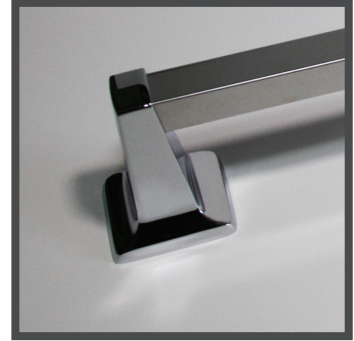
## Item #703

*Double Robe Hook*

**Chrome Plated Zamak  
(Zinc/Aluminum)**

**Screw Mount:** Concealed

**Projects:** 1 11/16"



## Item #705B

*Square Towel Bar  
Bracket*

**Use With:** 3/4" Square Towel Bar

**Towel Bars Available  
In Aluminum & Stainless Steel**

**Lengths:** 18", 24", 30", 36"

**Bracket:** Chrome Plated Zamak  
(Zinc/Aluminum)

**Screw Mount:** Concealed

**Projects:** 3 5/16"



## Item #711

*Toilet Tissue Holder*

**Roller:** Chrome Plated Plastic

**Brackets:** Chrome Plated Zamak  
(Zinc/Aluminum)

**Screw Mount:** Concealed

**Projects:** 3"



## Item #712

*Toilet Tissue Holder*

**Roller:** White Plastic

**Brackets:** Chrome Plated Zamak  
(Zinc/Aluminum)

**Screw Mount:** Concealed

**Projects:** 3"



## Item #721

*Toilet Tissue Holder*

**Roller:** Chrome Plated Plastic

**Brackets:** Chrome Plated Zamak  
(Zinc/Aluminum)

**Screw Mount:** Concealed

**Projects:** 3 5/16"



## Item #722

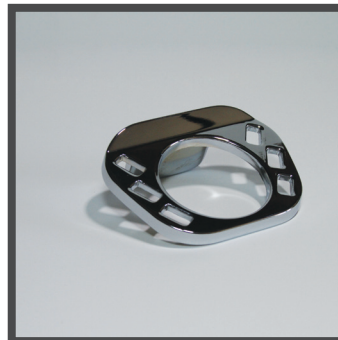
*Toilet Tissue Holder*

**Roller:** White Plastic

**Brackets:** Chrome Plated Zamak  
(Zinc/Aluminum)

**Screw Mount:** Concealed

**Projects:** 3 5/16"



## Item #727

*Toothbrush and  
Tumbler Holder*

**Chrome Plated Zamak  
(Zinc/Aluminum)**

**Screw Mount:** Concealed

**Projects:** 3 3/8"



## Item #729

*Soap Dish*

**Chrome Plated Zamak  
(Zinc/Aluminum)**

**Screw Mount:** Concealed

**Projects:** 3 3/8"





### Item #714

*Towel Ring*

**Lucite Ring:** 6" x 4 7/8"

**Bracket:** Chrome Plated Zamak  
(Zinc/Aluminum)

**Screw Mount:** Concealed

**Projects:** 1 3/4"



### Item #716

*Towel Ring*

**Metal Ring:** 6 1/4" x 6 1/8"

**Bracket:** Chrome Plated Zamak  
(Zinc/Aluminum)

**Screw Mount:** Concealed

**Projects:** 1 3/4"



### Item #361

*Toilet Tissue Holder*

**Roller:** Chrome Plated Plastic

**Brackets:** Chrome Plated Zamak  
(Zinc/Aluminum)

**Screw Mount:** Concealed

**Projects:** 3"



### Item #362

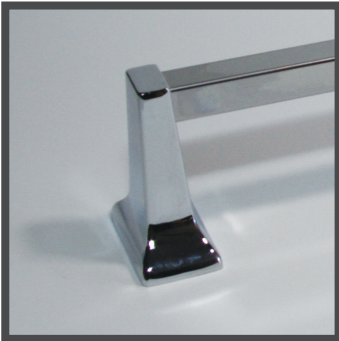
*Toilet Tissue Holder*

**Roller:** White Plastic

**Brackets:** Chrome Plated Zamak  
(Zinc/Aluminum)

**Screw Mount:** Concealed

**Projects:** 3"



### Item #351B

*Square Towel Bar  
Bracket*

**Use With:** 3/4" Square Towel Bar

**Towel Bars Available**

**In Aluminum & Stainless Steel**

**Lengths:** 18", 24", 30", 36"

**Bracket:** Chrome Plated Zamak  
(Zinc/Aluminum)

**Screw Mount:** Concealed

**Projects:** 3"



### Item #651B

*Square Towel Bar  
Bracket*

**Use With:** 5/8" Square Towel Bar

**Towel Bars Available**

**In Aluminum & Stainless Steel**

**Lengths:** 18", 24", 30", 36"

**Bracket:** Chrome Plated Zamak  
(Zinc/Aluminum)

**Screw Mount:** Concealed

**Projects:** 3"



### Item #665

*Toilet Tissue Holder*

**Roller:** Chrome Plated Plastic

**Brackets:** Chrome Plated Zamak  
(Zinc/Aluminum)

**Screw Mount:** Concealed

**Projects:** 3"



### Item #664

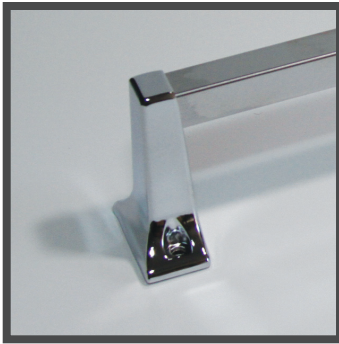
*Toilet Tissue Holder*

**Roller:** White Plastic

**Brackets:** Chrome Plated Zamak  
(Zinc/Aluminum)

**Screw Mount:** Concealed

**Projects:** 3"



### Item #851B

*Square Towel Bar Bracket*

**Use With:** 5/8" Square Towel Bar

**Towel Bars Available**

**In Aluminum & Stainless Steel**

**Lengths:** 18", 24", 30", 36"

**Bracket:** Chrome Plated Zamak  
(Zinc/Aluminum)

**Screw Mount:** Exposed

**Projects:** 2 3/4"



### Item #853

*Single Robe Hook*

**Chrome Plated Zamak**

(Zinc/Aluminum)

**Screw Mount:** Exposed

**Projects:** 1 3/8"



### Item #854

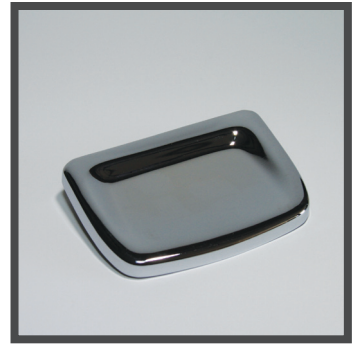
*Double Robe Hook*

**Chrome Plated Zamak**

(Zinc/Aluminum)

**Screw Mount:** Exposed

**Projects:** 1 1/2"



### Item #857

*Soap Dish*

**Chrome Plated Zamak**

(Zinc/Aluminum)

**Screw Mount:** Exposed

**Projects:** 2 15/16"



### Item #875

*Toothbrush and*

*Tumbler Holder*

**Chrome Plated Zamak**

(Zinc/Aluminum)

**Screw Mount:** Exposed

**Projects:** 2 15/16"



### Item #860

*Toothbrush and*

*Tumbler Holder*

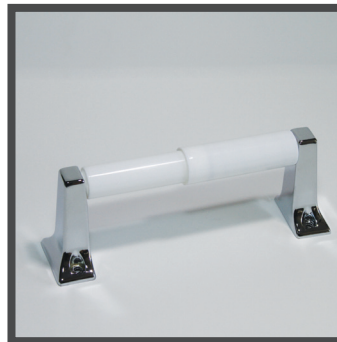
**Chrome Plated Zamak**

(Zinc/Aluminum)

**Tray:** Clear Plastic

**Screw Mount:** Exposed

**Projects:** 2 3/4"



### Item #864

*Toilet Tissue Holder*

**Roller:** White Plastic

**Brackets:** Chrome Plated Zamak  
(Zinc/Aluminum)

**Screw Mount:** Exposed

**Projects:** 2 3/4"



### Item #865

*Toilet Tissue Holder*

**Roller:** Chrome Plated Plastic

**Brackets:** Chrome Plated Zamak  
(Zinc/Aluminum)

**Screw Mount:** Exposed

**Projects:** 2 3/4"



### Item #866

*Towel Ring*

**Lucite Ring:** 6" x 4 3/4"

**Bracket:** Chrome Plated Zamak  
(Zinc/Aluminum)

**Screw Mount:** Exposed

**Projects:** 1 11/16"



### Item #07-PR

*White Plastic Roller*

**Replacement Roller for Items:**

**712, 722, 762, 362, 664, 864**

### Item #07-CR

*Chrome Plated Plastic Roller*

**Replacement Roller for Items:**

**711, 721, 761, 361, 665, 865**

**Towel Bars  
available  
separately**



## Satin Finish



### Item #5151B

*Satin Square Towel Bar Bracket*

**Use With:** 3/4" Square Towel Bar

**Lengths:** 18", 24", 30", 36"

**Bracket:** 304 Type Stainless Steel

**Finish:** Satin

**Screw Mount:** Concealed

**Projects:** 3 1/2"



### Item #5153

*Satin Single Robe Hook*

**304 Type Stainless Steel**

**Finish:** Satin

**Screw Mount:** Concealed

**Projects:** 1 7/8"



### Item #5154

*Satin Double Robe Hook*

**304 Type Stainless Steel**

**Finish:** Satin

**Screw Mount:** Concealed

**Projects:** 2 1/4"



### Item #5157

*Satin Toothbrush and Tumbler Holder*

**304 Type Stainless Steel**

**Finish:** Satin

**Screw Mount:** Concealed

**Size:** 4 1/4" x 3 1/8"

**Projects:** 4 1/4"



### Item #5159

*Satin Soap Dish*

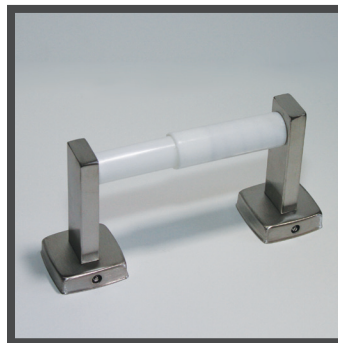
**304 Type Stainless Steel**

**Finish:** Satin

**Screw Mount:** Concealed

**Size:** 4 1/4" x 3"

**Projects:** 4 1/4"



### Item #5161

*Satin Toilet Tissue Holder*

**Roller:** White Plastic

**Brackets:** 304 Type Stainless Steel

**Finish:** Satin

**Screw Mount:** Concealed

**Projects:** 3 1/4"

# Stainless Steel Bathroom Accessories

Stainless Steel  
Bathroom Accessories





### Item #5161C

*Satin Toilet  
Tissue Holder*

**Roller:** Chrome Plated Plastic  
**Brackets:** 304 Type Stainless Steel  
**Finish:** Satin  
**Screw Mount:** Concealed  
**Projects:** 3 1/4"



### Item #07-PR

*White Plastic Roller  
Replacement Roller for  
Item #5161*

### Item #07-CR

*Chrome Plated  
Plastic Roller  
Replacement Roller for  
Item #5161C*



### Item #5166

*Satin Towel Ring*  
**304 Type Stainless Steel**  
**Finish:** Satin  
**Screw Mount:** Concealed  
**Projects:** 2 3/4"



### Item #5167

*Satin Towel Pin*  
**304 Type Stainless Steel**  
**Finish:** Satin  
**Screw Mount:** Concealed  
**Projects:** 4 3/4"

## Brite Finish



### Item #B5151B

*Brite Square Towel  
Bar Bracket*

**Use With:** 3/4" Square Towel Bar  
**Lengths:** 18", 24", 30", 36"  
**Bracket:** 304 Type Stainless Steel  
**Finish:** Brite  
**Screw Mount:** Concealed  
**Projects:** 3 1/2"



### Item #B5153

*Brite Single Robe Hook*  
**304 Type Stainless Steel**  
**Finish:** Brite  
**Screw Mount:** Concealed  
**Projects:** 1 7/8"



### Item #B5154

*Brite Double  
Robe Hook*  
**304 Type Stainless Steel**  
**Finish:** Brite  
**Screw Mount:** Concealed  
**Projects:** 2 1/4"



### Item #B5157

*Brite Toothbrush and  
Tumbler Holder*  
**304 Type Stainless Steel**  
**Finish:** Brite  
**Screw Mount:** Concealed  
**Size:** 4 1/4" x 3 1/8"  
**Projects:** 4 1/4"

**Item #B5159**

*Brite Soap Dish*  
**304 Type Stainless Steel**  
**Finish:** Brite  
**Screw Mount:** Concealed  
**Size:** 4 1/4" x 3"  
**Projects:** 4 1/4"

**Item #B5161**

*Brite Toilet Tissue Holder*  
**Roller:** White Plastic  
**Brackets:** 304 Type Stainless Steel  
**Finish:** Brite  
**Screw Mount:** Concealed  
**Projects:** 3 1/4"

**Item #B5161C**

*Brite Toilet Tissue Holder*  
**Roller:** Chrome Plated Plastic  
**Brackets:** 304 Type Stainless Steel  
**Finish:** Brite  
**Screw Mount:** Concealed  
**Projects:** 3 1/4"



**Item #07-PR**  
*White Plastic Roller Replacement Roller for Item #B5161*

**Item #07-CR**  
*Chrome Plated Plastic Roller Replacement Roller for Item #B5161C*

**Item #B5166**

*Brite Towel Ring*  
**304 Type Stainless Steel**  
**Finish:** Brite  
**Screw Mount:** Concealed  
**Projects:** 2 3/4"

**Item #B5167**

*Brite Towel Pin*  
**304 Type Stainless Steel**  
**Finish:** Brite  
**Screw Mount:** Concealed  
**Projects:** 4 3/4"

**Towel Bars available separately**



# Commercial Bathroom Accessories

Commercial  
Bathroom Accessories



## Item #CW22

*Single Roll*  
**Polished Chrome Plated Steel**  
**Pilfer Proof Locking Device**  
**Dimensions:**  
2 3/4" x 6" x 4 3/8"



## Item #CW23

*Double Roll Capacity*  
**Polished Chrome Plated Steel**  
**Pilfer Proof Locking Device**  
**Dimensions:**  
2 3/4" x 12" x 4 3/8"



## Item #CW815

*Single Roll*  
**Polished Chrome**  
**Plated Zamak**  
**Concealed Hinge at End**  
**Tension Spring Controls**  
**Tissue Flow**  
**Dimensions:**  
2 7/16" x 5 1/2" x 4 5/16"



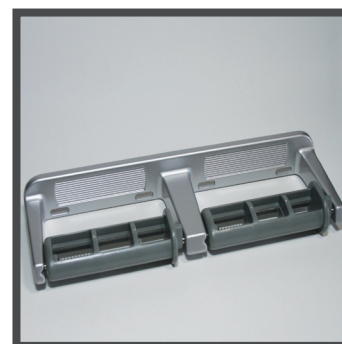
## Item #CW830

*Double Roll Capacity*  
**Polished Chrome**  
**Plated Zamak**  
**Concealed Hinge at End**  
**Tension Spring Controls**  
**Tissue Flow**  
**Dimensions:**  
2 7/16" x 10 1/2" x 4 5/16"



## Item #CW813

*Single Roll*  
**Die Cast Aluminum**  
**Pilfer Proof Locking Device**  
**Dimensions:**  
1 3/4" x 6 1/2" x 4 1/4"



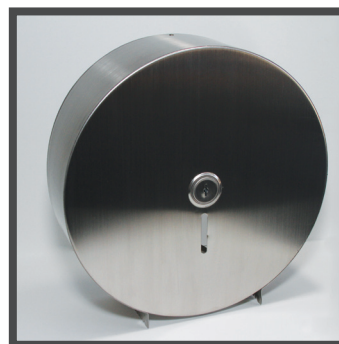
## Item #CW814

*Double Roll Capacity*  
**Die Cast Aluminum**  
**Pilfer Proof Locking Device**  
**Dimensions:**  
1 3/4" x 12 5/8" x 4 1/4"



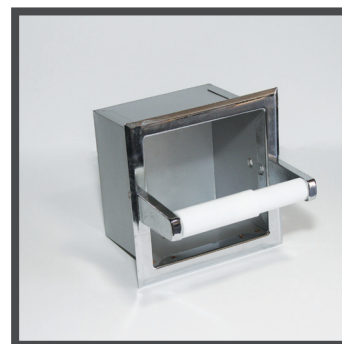
## Item #CW813-PR

*Replacement Roller*  
**CW813 & CW814**



## Item #CW2001SS

*Jumbo Toilet Paper*  
*Dispenser*  
**Satin Finish**  
**#304 Stainless Material**  
**Dimensions:** 14" x 4 1/2"



## Item #CW870

*Recessed Paper*  
*Holder with Spare Roll*  
**Overall Size:** 6 1/4" x 6 1/4"  
**Wall Opening:** 5 1/4" x 5 1/4" x 4"

Please See Our Website at [www.cwecoinc.com](http://www.cwecoinc.com)

**Item #212**

*Recessed  
Paper Holder*  
**Stainless Steel Shell,  
Chrome Plated Plastic Ears  
Chrome Plated Plastic Roller**  
**Overall Size:** 6 1/4" x 6 1/4"  
**Wall Opening:** 5 1/4" x 5 1/4" x 4"

**Item #213**

*Recessed  
Paper Holder*  
**Stainless Steel Shell,  
Chrome Plated Plastic Ears  
White Plastic TP Roller**  
**Overall Size:** 6 1/4" x 6 1/4"  
**Wall Opening:** 5 1/4" x 5 1/4" x 4"

**Item #07-PR**

*White Plastic Roller*  
**Replacement Roller for  
Item #213**

**Item #07-CR**

*Chrome Plated  
Plastic Roller*  
**Replacement Roller for  
Item #212**

**Item #430**

*Installation Clamp  
with Spring*  
**For Use with Items 212 & 213**

**Item #CW401C**

*Surface Mount  
Toilet Tissue Dispenser*  
**Polished Chrome Plated Steel**  
**Dimensions:** 5" x 8 1/4" x 3"

**Item #CWTTD-5**

*Surface Mount  
Toilet Tissue Dispenser*  
**Satin Stainless Steel**  
**Dimensions:**  
5 7/8" x 10 7/8" x 6 1/8"

**Item #CW630C**

*For Use with Single  
Fold Paper Towels*  
**Polished Chrome Plated Steel**  
**Dimensions:**  
8 1/8" x 10 5/8" x 6 7/8"

**Item #CW630W**

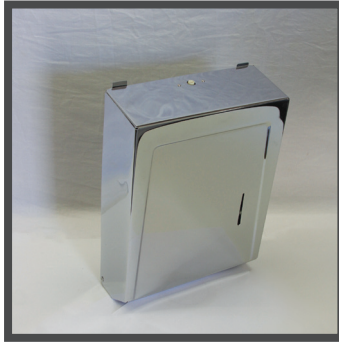
*For Use with Single  
Fold Paper Towels*  
**White Powder Coated Steel**  
**Dimensions:**  
8 1/8" x 10 5/8" x 6 7/8"





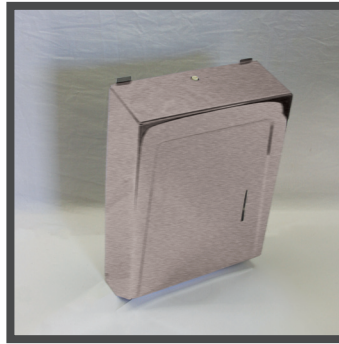
### Item #CW990W

For Use with  
Multi or C Fold  
Paper Towels  
**White Powder Coated Steel**  
**Dimensions:**  
15 3/8" x 11 1/4" x 4 1/16"



### Item #CW991C

For Use with  
Multi or C Fold  
Paper Towels  
**Polished Chrome Plated Steel**  
**Dimensions:**  
15 3/8" x 11 1/4" x 4 1/16"



### Item#CW989SS

For Use with  
Multi or C Fold  
Paper Towels  
**Stainless Steel**  
**Dimensions:**  
15 3/8" x 11 1/4" x 4 1/16"



### Item #CW1474

Towel Shelf with  
Drying Rod  
& Support Brackets  
**Polished Chrome Plated Zamak**  
**Lengths:** 18" & 24"  
Stainless Steel Tubes  
**Projects:** 8 1/2"



### Item #CW1480

Deluxe Towel  
Supply Shelf with  
Drying Rod  
**Polished Chrome Plated Steel**  
**Lengths:** 18" & 24"  
**Overall Height:** 6 1/2"  
**Overall Depth:** 9"



### Item #CW1532

Two Guest  
Towel Rack  
**Polished Chrome Plated Steel**  
**Overall Height:** 12 1/4"



### Item #CW1533

Three Guest  
Towel Rack  
**Polished Chrome Plated Steel**  
**Overall Height:** 17 1/4"



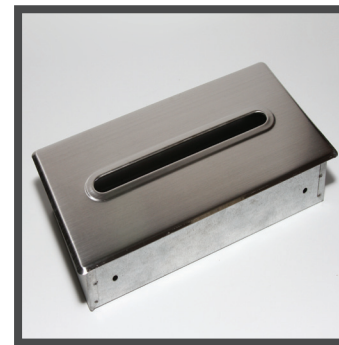
### Item #CW1534

Four Guest  
Towel Rack  
**Polished Chrome Plated Steel**  
**Overall Height:** 22 1/4"



### Item #CW41SM

Facial Tissue Holder  
Surface Mounted  
**Polished Chrome Plated Finish**  
**Dimensions:**  
10 3/4" x 5 3/4" x 2"



### Item#CW41RSS

Facial Tissue Holder  
Recessed  
**Cover:** Polished Stainless Steel  
**Dimensions:**  
11 3/4" x 6 1/4" x 2 5/8"



### Item#CW41RST

Facial Tissue Holder  
Recessed  
**Cover:** Polished Chrome Plated Steel  
**Dimensions:**  
11 3/4" x 6 1/4" x 2 5/8"



### Item #CW40R

Vanity Apron Facial  
Tissue Dispenser  
**Galvanized Steel**  
**Dimensions:**  
11 3/4" x 6" x 2 1/8"

**Item#CWHK250C**

*Sanitary Napkin  
Receptacle*

**Polished Chrome Plated Steel**

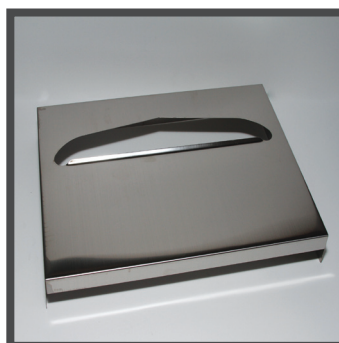
**Dimensions:**  
8" x 11 1/4" x 4 1/4"

**Item #CW45C**

*Toilet Seat Cover  
Dispenser*

**Polished Chrome Plated Steel**

**Dimensions:**  
11 1/2" x 16 1/2" x 1 7/8"

**Item #CWTSC-1**

*Toilet Seat Cover  
Dispenser*

**Satin Stainless Steel**

**Dimensions:**  
15 1/4" x 11" x 2"

**Item #CW528**

*Bottle Opener*  
**Chrome Plated Steel**

**Dimensions:**  
3 1/8" x 1 9/16"

**Item #CW515**

*Mop & Broom Holder*

**Mounting Bracket:** Polished  
Chrome Plated Steel

**Cam:** Serrated Hard Rubber

**Dimensions:**  
1/2" x 1 1/4" x 1 1/8"

**Item#CW42RCL**

*Retractable Clothes Line*

**Line Extends:** 8 1/2'  
Stainless Steel

**Dimensions:**  
3 9/16" x 1 1/8"



### Item#CWAT9

*Surface Mounted  
Ashtray*

**Polished Chrome  
Plated Steel**

**Dimensions:**  
5" Dia. x 4" Depth x 6" Height



### Item#CWAT10-1

*Surface Mounted  
Ashtray*

**Polished Chrome Plated Steel**

**Dimensions:**  
4" Dia. x 2 1/2" Depth x 3" Height

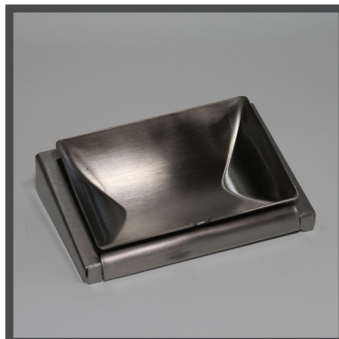


### Item#CWAT11

*Surface Mounted  
Wall Urn*

**Type 304 Stainless Steel  
Heavy Duty Aluminum  
Mounting Bracket**

**Dimensions:**  
9 1/2" x 9 1/4" x 9 5/8"



### Item#CWAT5040

*Flip Ashtray*

**Stainless Steel**

**Dimensions:** 5 1/8" x 1 1/2"

**Projects:** 3 3/4"

# Ashtrays

Ashtrays

16

Please See Our Website at [www.cwecoinc.com](http://www.cwecoinc.com)



### Item # CW0132

*Tank Type Powder  
Soap Dispenser*

**Capacity:** 32oz

**Dimensions:** 4 3/4" x 8 1/4" x 4"



### Item # CW1

*Soap Dispenser  
with Lather Valve*

**Capacity:** 12oz

**Dimensions:** 6" x 3 3/16" x 3 3/16"

**Valve Projects:** 2 11/16"



### Item # CW11

*Soap Dispenser  
with Liquid Valve*

**Capacity:** 12oz

**Dimensions:** 6" x 3 3/16" x 3 3/16"

**Valve Projects:** 2 11/16"



### Item # CW16A

*Vertical Tank Type  
Soap Dispenser*

**Capacity:** 40oz

**Dimensions:** 8 1/4" x 4 3/4" x 3"

# Soap Dispensers

Soap Dispensers







### Item#CW58A

*Horizontal Tank  
Type Soap Dispenser*

**Capacity:** 40oz

**Dimensions:** 8 1/4" x 4 3/4" x 3"



### Item#CW29SVL

*Basin Mount Soap  
Dispenser*

**Capacity:** 16oz

**Spout:** 4"



### Item#CW29SVLM3

*Basin Mount Soap  
Dispenser*

**Capacity:** 32oz

**Spout:** 4"



### Item#CW64LB

*Basin Mount Soap  
Dispenser*

**Capacity:** 32oz

**Spout:** 4"



### Item#CW64LBM2

*Basin Mount  
Soap Dispenser*

**Capacity:** 32oz

**Spout:** 6"



### Item#CW500P

*Push Up Liquid  
Soap Dispenser*

**Capacity:** 16oz

**Dimensions:** 6 1/2" x 3 3/4" x 5 1/4"



### Item#CW72

*Powder  
Soap Dispenser*

**Capacity:** 32oz

**Dimensions:** 7 1/4" x 4 3/8" x 4 5/8"



### Item#CWB6

*Soap Dispenser  
with Liquid Valve*

**Capacity:** 16oz

**Dimensions:** 6 1/2" x 3 3/8" x 5 1/8"





**2600** Series Grab Bar  
1 1/4" (Snap) Concealed Screw



**2300** Series Grab Bar  
1 1/4" Exposed Screw



**3300** Series Grab Bar  
1 1/2" Exposed Screw



**3600** Series Grab Bar  
1 1/2" (Snap) Concealed Screw

### Commercial Grab Bars

1 1/4" x .049" Diameter Tubing (Type 304 Stainless Steel)

#### Exposed Screw Flange

**Standard Lengths:** 12" 18" 24" 30" 32" 36" 42" 48"

1 1/4" x .049" Diameter Tubing (Type 304 Stainless Steel)

#### (Snap) Concealed Screw Flange

**Standard Lengths:** 12" 18" 24" 30" 32" 36" 42" 48"

1 1/2" x .049" Diameter Tubing (Type 304 Stainless Steel)

#### Exposed Screw Flange

**Standard Lengths:** 12" 18" 24" 30" 32" 36" 42" 48"

1 1/2" x .049" Diameter Tubing (Type 304 Stainless Steel)

#### (Snap) Concealed Screw Flange

**Standard Lengths:** 12" 18" 24" 30" 32" 36" 42" 48"

### Custom Bar Configuration

Straight with Center Post

120 Degree Angle

90 Degree Angle (One Wall Grab Bar)

Inside Corner Angle (Two Wall Grab Bar)

Shower Bar

Tub & Shower Bar

Wall to Floor

Wall to Floor with Socket

Wall to Floor with Center Post

Toilet Straddle

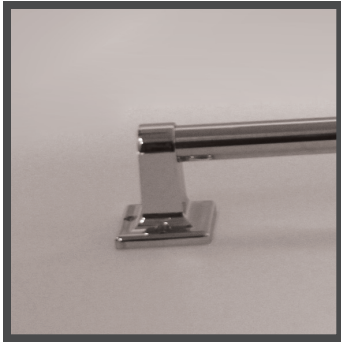
**NOTE:** Bars can be manufactured to any custom configuration and size not listed above.

# Grab Bars/Shelves/Mirrors

Grab Bars/Shelves/Mirrors







## Item #555B

### Residential Grab Bar Bracket

Polished Chrome Plated Zamak  
(Zinc/Aluminum)

**Bracket:** 2 1/2" x 2 1/2"

**Projects:** 2 11/16"



## Item #555-18SS

### Residential Grab Bars

**Bar:** 7/8" x .035" x 18" Round Stainless Steel Tubing

**Bracket:** Polished Chrome Plated Zamak (Zinc/Aluminum)

**Bracket:** 2 1/2" x 2 1/2"

**Projects:** 2 11/16"

## Item #555-24SS

### Residential Grab Bars

**Bar:** 7/8" x .035" x 24" Round Stainless Steel Tubing

**Bracket:** Polished Chrome Plated Zamak (Zinc/Aluminum)

**Bracket:** 2 1/2" x 2 1/2"

**Projects:** 2 11/16"

## Item #555-30SS

### Residential Grab Bars

**Bar:** 7/8" x .035" x 30" Round Stainless Steel Tubing

**Bracket:** Polished Chrome Plated Zamak (Zinc/Aluminum)

**Bracket:** 2 1/2" x 2 1/2"

**Projects:** 2 11/16"

**Additional Lengths Available  
Upon Request**



## Item #V215-16

### Stainless Steel Shelf

**Dimensions:** 5" x 16"

**Type 304 Stainless Steel**

## Item #V215-18

### Stainless Steel Shelf

**Dimensions:** 5" x 18"

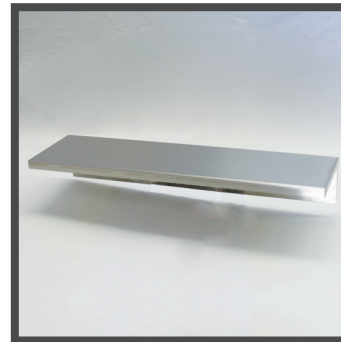
**Type 304 Stainless Steel**

## Item #V215-24

### Stainless Steel Shelf

**Dimensions:** 5" x 24"

**Type 304 Stainless Steel**



## Item #V225-16

### Stainless Steel Shelf

**Dimensions:** 5" x 16"

**Type 304 Stainless Steel**

## Item #V225-18

### Stainless Steel Shelf

**Dimensions:** 5" x 18"

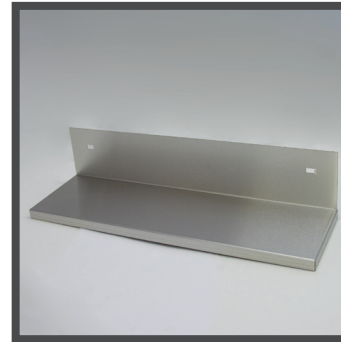
**Type 304 Stainless Steel**

## Item #V225-24

### Stainless Steel Shelf

**Dimensions:** 5" x 24"

**Type 304 Stainless Steel**



## Item #V235-16

### Stainless Steel Shelf

**Dimensions:** 5" x 16"

**Type 304 Stainless Steel**

## Item #V235-18

### Stainless Steel Shelf

**Dimensions:** 5" x 18"

**Type 304 Stainless Steel**

## Item #V235-24

### Stainless Steel Shelf

**Dimensions:** 5" x 24"

**Type 304 Stainless Steel**



## Item #V245-16

### Stainless Steel Shelf

**Dimensions:** 5" x 16"

**Type 304 Stainless Steel**

## Item #V245-18

### Stainless Steel Shelf

**Dimensions:** 5" x 18"

**Type 304 Stainless Steel**

## Item #V245-24

### Stainless Steel Shelf

**Dimensions:** 5" x 24"

**Type 304 Stainless Steel**

**Additional Sizes Available**

**Item #V412**

24" Mop and Broom  
Holder

Type 304 Stainless Steel  
3 ea Holders

**Item #V413**

36" Mop and Broom  
Holder

Type 304 Stainless Steel  
4 ea Holders

**Item #V414**

48" Mop and Broom  
Holder

Type 304 Stainless Steel  
5 ea Holders

**Item #V422**

30" Janitorial Shelf

Type 304 Stainless Steel  
3 ea Mop And Broom Holders  
2 ea Hooks

**Item #V423**

36" Janitorial Shelf

Type 304 Stainless Steel  
4 ea Mop And Broom Holders  
3 ea Hooks

**Item #V424**

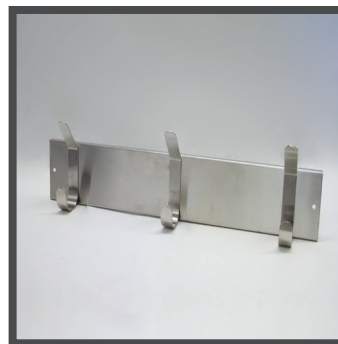
42" Janitorial Shelf

Type 304 Stainless Steel  
5 ea Mop And Broom Holders  
4 ea Hooks

**Item #V425**

48" Janitorial Shelf

Type 304 Stainless Steel  
6 ea Mop And Broom Holders  
5 ea Hooks

**Item #V432**

24" Hook Strip

Type 304 Stainless Steel  
3 ea Hooks

**Item #V433**

36" Hook Strip

Type 304 Stainless Steel  
4 ea Hooks

**Item #V434**

48" Hook Strip

Type 304 Stainless Steel  
5 ea Hooks

**Item #V100-1830**

Stainless Steel

Channel Frame Mirror

Dimensions: 18" x 30"

**Item #V100-1836**

Stainless Steel

Channel Frame Mirror

Dimensions: 18" x 36"

**Item #V100-2436**

Stainless Steel

Channel Frame Mirror

Dimensions: 24" x 36"

**Item #V190T-1830**

Stainless Steel

Channel Frame Mirror

Dimensions: 18" x 30"  
Adjustable Tilt

**Item #V190T-1836**

Stainless Steel

Channel Frame Mirror

Dimensions: 18" x 36"  
Adjustable Tilt

**Item #V190T-2436**

Stainless Steel

Channel Frame Mirror

Dimensions: 24" x 36"  
Adjustable Tilt

**Item #V990-1830**

Stainless Steel

Channel Frame Mirror

Dimensions: 18" x 30"  
Fixed Tilt

**Item #V990-1836**

Stainless Steel

Channel Frame Mirror

Dimensions: 18" x 36"  
Fixed Tilt

**Item #V990-2436**

Stainless Steel

Channel Frame Mirror

Dimensions: 24" x 36"  
Fixed Tilt

**Additional Sizes Available**



1156 W. 135th Street Gardena, CA 90247  
Phone: 800-292-9326 310-538-9440  
Fax: 800-232-9326 310-715-9188  
cwecosales@gmail.com www.cwecoinc.com

