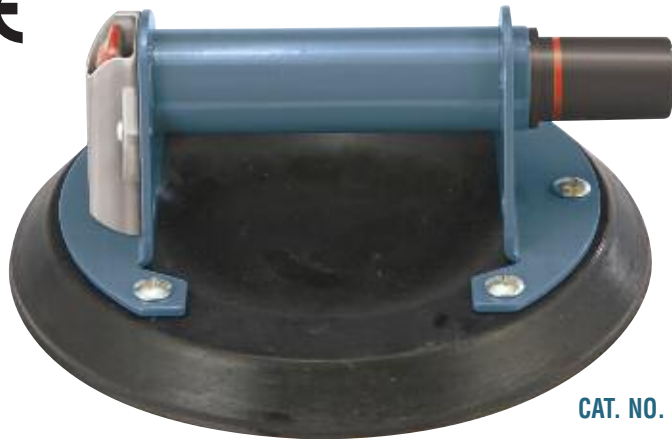


CRL S7950 8" Pump-Action Vacuum Lifter

- Heavy-Duty Steel Handle
- Fast Attachment on Smooth, Nonporous Flat Surfaces
- Tough ABS Plunger With Red-Line Indicator
- Full Pad Face Contact When Pumped Reduces Distortion
- Can Be Re-Pumped Without Losing Remaining Vacuum
- Wide Release Valve Lever With Safety Guard Permits Quick and Complete Release
- Special Distributor Pricing Available



Lifting Capacity
125 lb. (57 kg)



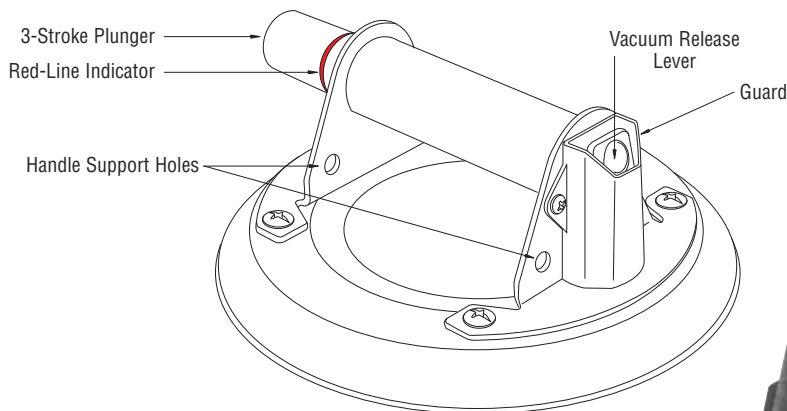
CAT. NO. S7950

CRL has developed the Cat. No. S7950 8" (203 mm) Pump-Action Vacuum Lifter with the strength of a heavy-duty steel handle and a tough ABS 3-stroke Plunger Pump for extra-fast attachment to glass and other nonporous surfaces. The Plunger uses a red-line indicator to let you know that you have sufficient vacuum to lift your load. Should the red-line appear after pumping, a built-in check valve allows you to re-pump without vacuum loss.

The large rubber pad area of over 50 square inches (323 square centimeters) makes full face contact when the Lifter is pumped, and allows attachment to glass of varying thickness with very little risk of damage.

To release the S7950 Lifter from the surface, simply press the vacuum release lever (which is protected by a guard during use) and the pad detaches from the surface without any residual sticking.

Four 5/16" (7.9 mm) diameter holes in the handle are convenient locations to attach guide ropes when using these Vacuum Lifters mounted on one of CRL's Manual Lifting Frames (shown on pages 712K to 715K), as well as for other utility attachments. Minimum order is one each.



Holes in Handle for Optional Guide Ropes



Protective Carrying Case Included