

CRL Ball Bearing Wheel Assembly for S710 Security H-Bar

- Permits Showcase Doors to Move Smoothly and Quietly

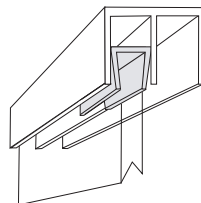


CAT. NO. TA20
Ball Bearing Wheel

Ball Bearing Wheel Assembly slips into cut end of our S710 Security H-Bar, and is held into place when you tighten two screws.
NOTE: For use only with S710 Security H-Bar. Minimum order is one each.

CRL Translucent Plastic Top Guides

- Clear Top Guide Prevents Glass Doors From Rattling in Upper Channel



CAT. NO. D655
Translucent Plastic Top Guide

CRL Translucent Plastic Top Guides for 1/4" (6 mm) glass center the door glass securely in the Upper Channel, which prevents rattling and excessive side-to-side movement. Most commonly used in D603 and D613 Upper Channels. Press-fit holds Guide snugly in position. The 7/8" (22.2 mm) long Guides snap easily onto the top of the glass doors. A minimum of two Guides are required for each door. Minimum order is one each.

CRL Wheel Assembly for DV146 H-Bar

- Permits Showcase Doors to Move Effortlessly



CAT. NO. DV147
Nylon Wheel

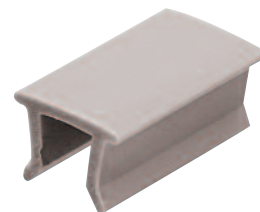
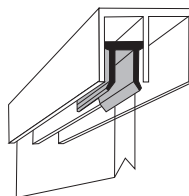


CAT. NO. DV147S
Steel Wheel

This CRL Wheel Assembly slips into the cut end of our DV146 H-Bar and is held in place when the two screws are tightened. Available in either Nylon or Steel Wheels. Minimum order is one each.

CRL Gray PVC Plastic Top Guides

- Prevents Glass Doors From Rattling in Upper Channel



CAT. NO. D652
Gray Plastic Top Guide

CRL Gray PVC Plastic Top Guides for 1/4" (6 mm) glass center the door glass securely in the Upper Channel, which prevents rattling and excessive side-to-side movement. Most commonly used in D603 and D613 Upper Channels. Press-fit holds Guide snugly in position. The 7/8" (22.2 mm) long Guides snap easily onto the top of the glass doors. A minimum of two Guides are required for each door. Minimum order is one each.

CRL Heavy-Duty Wheel Assembly for D1652 H-Bar

- Designed to Carry Heavy Showcase Panels

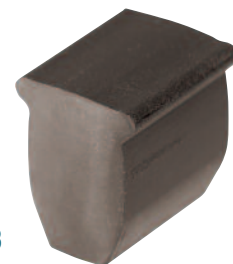
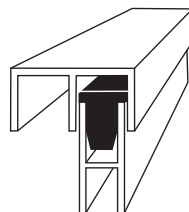


CAT. NO. D123R
Nylon Wheel

This CRL Heavy-Duty Wheel Assembly for the D1652 H-Bar and D1653 Heavy-Duty Lower Track is a flat nylon wheel designed to work with large, heavier panels of glass. The wheel is held in place when the two screws are tightened. Minimum order is one each.

CRL Rubber Top Guide

- Used for Track Assemblies Using H-Bar at the Top



CAT. NO. D653
Rubber Top Guide

CRL Black Rubber Top Guides are press-fitted into the top pocket of H-Bar on installations using H-Bar at the top of the glass. Two Guides are required for each door. Rubber Top Guides ensure a smooth, quiet sliding door system. Used primarily with CRL's D610 H-Bar with D603 and D613 Upper Channels. The Guides are 1/2" (12.7 mm) in length. Minimum order is one each.