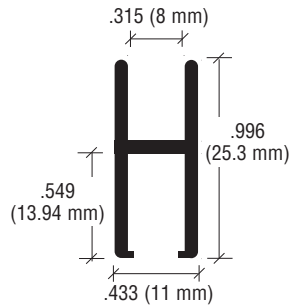
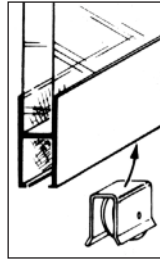


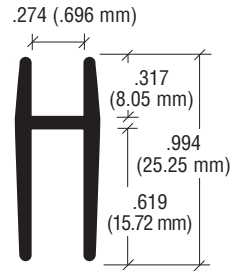
## CRL H-Bars vs. Competitive H-Bars



The CRL H-Bar has an exclusive "wheel retaining lip" in the wheel side, which prevents Wheel Assemblies from racking or moving. CRL H-Bar and Wheel Assemblies can only be used in conjunction with each other, and are not interchangeable with other brands of sliding track. Use CRL Cat. Nos. D650 or D649 Wheel Assemblies shown below.

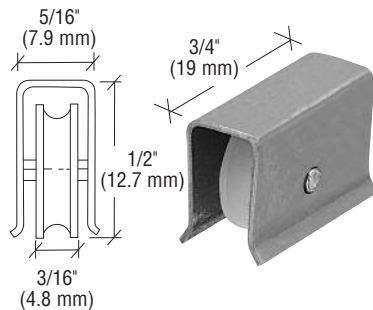


Competitive H-Bar is not interchangeable between manufacturers. Carefully check your H-Bar dimensions to ensure the proper Wheel Assembly is ordered. Competitive H-Bar is not for use with CRL Track Assemblies, but will fit Knap & Vogt, Stylemark, Epco, Garco, Morse, and many others. Use Cat. Nos. D5649 and D5650 Wheel Assemblies shown below.



## CRL Standard Nylon Wheel Assembly for CRL H-Bars

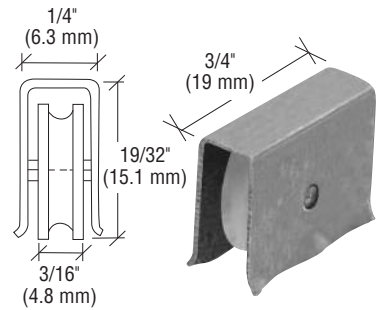
These CRL Standard Nylon Wheel Assemblies are used with D610, D615, LK610, KK610, and MC610 H-Bars. This nylon wheel unit is fabricated in a steel housing which press-fits into bottom of the H-Bar. For sliding glass panels fabricated with up to five square feet of 1/4" (6 mm) plate glass or other glazing material. Minimum order is one each.



**CAT. NO. D650**  
Nylon Wheel

## CRL Nylon Wheel Assembly for Competitive H-Bars

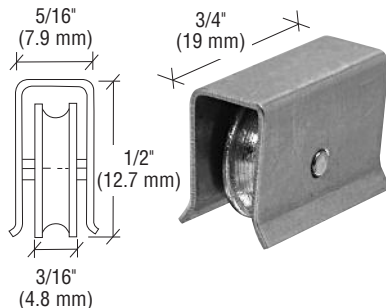
CRL's Competitive Type Nylon Wheel Assemblies are used with D5610 Series H-Bar, as well as some of the competitive H-Bar on the market. Nylon rollers can be used for sliding panels fabricated with up to five square feet of 1/4" (6 mm) glass or other glazing material. Minimum order is one each.



**CAT. NO. D5650**  
Nylon Wheel

## CRL Heavy-Duty Ball Bearing Wheel Assembly for CRL H-Bars

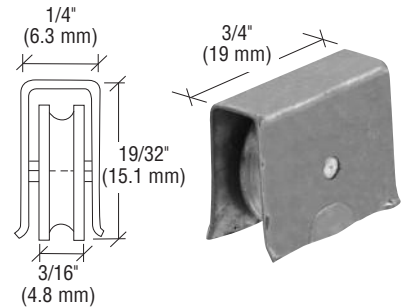
These CRL Heavy-Duty Ball Bearing Wheel Assemblies are used with D610, D615, LK610, KK610, and MC610 H-Bar. This ball bearing wheel unit is fabricated in a steel housing which press-fits into bottom of the H-Bar. For sliding glass panels fabricated with up to 15 square feet of 1/4" (6 mm) plate glass or other glazing material. Minimum order is one each.



**CAT. NO. D649**  
Ball Bearing Wheel

## CRL Ball Bearing Wheel Assembly for Competitive H-Bars

CRL's Competitive Type Ball Bearing Wheel Assemblies are used with D5610 Series H-Bar, as well as some of the competitive H-Bar on the market. Ball bearing rollers can be used with panels of up to 15 square feet of 1/4" (6 mm) material. Minimum order is one each.



**CAT. NO. D5649**  
Ball Bearing Wheel

## CRL Wheel Tool

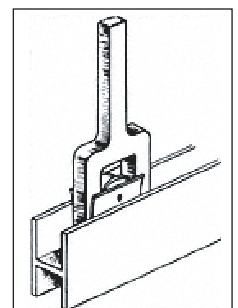
CRL does not recommend that Wheel Assemblies be forcefully driven into H-Bars with a hammer. This Wheel Tool was designed to safely install all D650, D649, D5650, and D5649 Wheel Assemblies without damage to either the wheels or H-Bars. Minimum order is one each.

**NOTE:** One Wheel Tool is included free with every box (100 wheels) purchased. Applies only to D650 and D649 Wheel Assemblies.



- Safely Installs Wheel Assemblies Into H-Bars

**CAT. NO. D9650**  
Wheel Tool



## CRL Ball Bearing Wheel Assembly for S710 Security H-Bar

- Permits Showcase Doors to Move Smoothly and Quietly

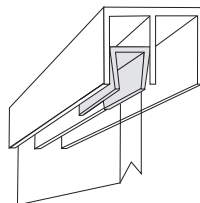


**CAT. NO. TA20**  
Ball Bearing Wheel

Ball Bearing Wheel Assembly slips into cut end of our S710 Security H-Bar, and is held into place when you tighten two screws.  
**NOTE:** For use only with S710 Security H-Bar. Minimum order is one each.

## CRL Translucent Plastic Top Guides

- Clear Top Guide Prevents Glass Doors From Rattling in Upper Channel



**CAT. NO. D655**  
Translucent Plastic Top Guide

CRL Translucent Plastic Top Guides for 1/4" (6 mm) glass center the door glass securely in the Upper Channel, which prevents rattling and excessive side-to-side movement. Most commonly used in D603 and D613 Upper Channels. Press-fit holds Guide snugly in position. The 7/8" (22.2 mm) long Guides snap easily onto the top of the glass doors. A minimum of two Guides are required for each door. Minimum order is one each.

## CRL Wheel Assembly for DV146 H-Bar

- Permits Showcase Doors to Move Effortlessly



**CAT. NO. DV147**  
Nylon Wheel

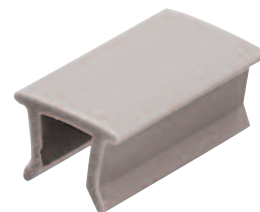
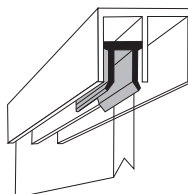


**CAT. NO. DV147S**  
Steel Wheel

This CRL Wheel Assembly slips into the cut end of our DV146 H-Bar and is held in place when the two screws are tightened. Available in either Nylon or Steel Wheels. Minimum order is one each.

## CRL Gray PVC Plastic Top Guides

- Prevents Glass Doors From Rattling in Upper Channel



**CAT. NO. D652**  
Gray Plastic Top Guide

CRL Gray PVC Plastic Top Guides for 1/4" (6 mm) glass center the door glass securely in the Upper Channel, which prevents rattling and excessive side-to-side movement. Most commonly used in D603 and D613 Upper Channels. Press-fit holds Guide snugly in position. The 7/8" (22.2 mm) long Guides snap easily onto the top of the glass doors. A minimum of two Guides are required for each door. Minimum order is one each.

## CRL Heavy-Duty Wheel Assembly for D1652 H-Bar

- Designed to Carry Heavy Showcase Panels

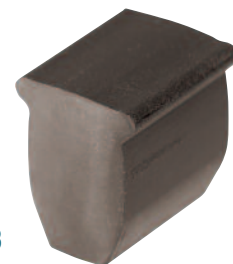
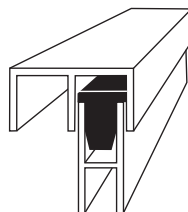


**CAT. NO. D123R**  
Nylon Wheel

This CRL Heavy-Duty Wheel Assembly for the D1652 H-Bar and D1653 Heavy-Duty Lower Track is a flat nylon wheel designed to work with large, heavier panels of glass. The wheel is held in place when the two screws are tightened. Minimum order is one each.

## CRL Rubber Top Guide

- Used for Track Assemblies Using H-Bar at the Top



**CAT. NO. D653**  
Rubber Top Guide

CRL Black Rubber Top Guides are press-fitted into the top pocket of H-Bar on installations using H-Bar at the top of the glass. Two Guides are required for each door. Rubber Top Guides ensure a smooth, quiet sliding door system. Used primarily with CRL's D610 H-Bar with D603 and D613 Upper Channels. The Guides are 1/2" (12.7 mm) in length. Minimum order is one each.